

UNITED STATES
DEPARTMENT OF THE INTERIOR
BUREAU OF LAND MANAGEMENT

APPLICATION FOR PERMIT TO DRILL, DEEPEN, OR PLUG BACK

1a. TYPE OF WORK

DRILL ☒

DEEPEN ☐

PLUG BACK ☐

b. TYPE OF WELL

OIL WELL ☒

GAS WELL ☐

OTHER

SINGLE ZONE ☒

MULTIPLE ☐

2. NAME OF OPERATOR

Siete Oil & Gas Corporation

3. ADDRESS OF OPERATOR

P.O. Box 2523

Roswell, NM 88202-2523

AUG 17 '88

4. LOCATION OF WELL (Report location clearly and in accordance with any State requirements.)*

At surface

930' FSL & 660' FWL, SW $\frac{1}{4}$ SW $\frac{1}{4}$, Unit Letter M

At proposed prod. zone

O. C. D.
ARTESIA, OFFICE

5. LEASE DESIGNATION AND SERIAL NO.

LC NM-029387-D

6. IF INDIAN, ALLOTTED OR TRIBE NAME

7. UNIT AGREEMENT NAME

8. FARM OR LEASE NAME

Pueblo Federal

9. WELL NO.

1

10. FIELD AND POOL, OR WILDCAT

Wildcat - Bone Spring

11. SEC., T., R., M., OR BLK.
AND SURVEY OR AREA

Sec. 30: T18S, R31E

12. COUNTY OR PARISH

Eddy

13. STATE

NM

14. DISTANCE IN MILES AND DIRECTION FROM NEAREST TOWN OR POST OFFICE*

6 $\frac{1}{2}$ air miles Southeast of Loco Hills

15. DISTANCE FROM PROPOSED*

LOCATION TO NEAREST
PROPERTY OR LEASE LINE, FT.
(Also to nearest drlg. unit line, if any)

660'

16. NO. OF ACRES IN LEASE

301.30

17. NO. OF ACRES ASSIGNED
TO THIS WELL

40

18. DISTANCE FROM PROPOSED LOCATION*

TO NEAREST WELL, DRILLING, COMPLETED,
OR APPLIED FOR, ON THIS LEASE, FT.

600'

19. PROPOSED DEPTH

9200'

20. ROTARY OR CABLE TOOLS

Rotary

21. ELEVATIONS (Show whether DF, RT, GR, etc.)

3561' GR

22. APPROX. DATE WORK WILL START*

ASAP

23.

PROPOSED CASING AND CEMENTING PROGRAM

SIZE OF HOLE	SIZE OF CASING	WEIGHT PER FOOT	SETTING DEPTH	QUANTITY OF CEMENT
17 $\frac{1}{2}$ "	13 $\frac{3}{8}$ "	54.0#	500'	500 sks. <u>circ.</u>
12 $\frac{1}{4}$ "	8 $\frac{5}{8}$ "	24.0#	2200'	1200 sks. <u>circ.</u>
7 $\frac{7}{8}$ "	5 $\frac{1}{2}$ "	17.0#	9200'	1500 sks.

Selectively perforate and treat pay zones.

Attachments:

Survey plat (C-102)

Supplemental drilling data

Surface use plan

IN ABOVE SPACE DESCRIBE PROPOSED PROGRAM: If proposal is to deepen or plug back, give data on present productive zone and proposed new productive zone. If proposal is to drill or deepen directionally, give pertinent data on subsurface locations and measured and true vertical depths. Give blowout preventer program, if any.

24.

SIGNED

[Signature]

TITLE

V.P. Drilling/Production

DATE

July 26, 1988

(This space for Federal or State office use)

PERMIT NO.

APPROVAL DATE

AREA MANAGER

CARLSBAD

APPROVED BY

TITLE

DATE

8-16-88

CONDITIONS OF APPROVAL, IF ANY:

*See Instructions On Reverse Side

NEW MEXICO OIL CONSERVATION COM SION
WELL LOCATION AND ACREAGE DEDICATION PLAT

Form C-102
Supersedes C-128
Effective 1-1-65

All distances must be from the outer boundaries of the Section.

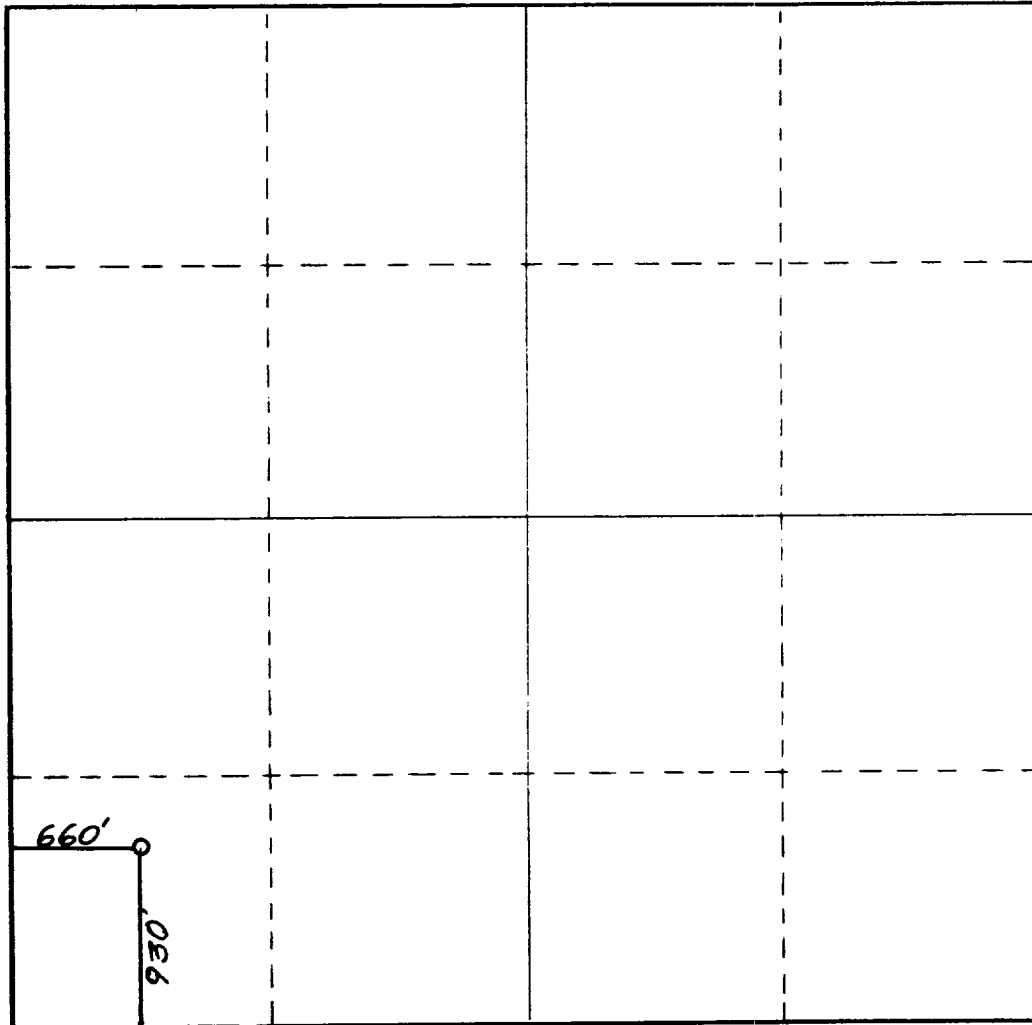
Operator SIETE OIL & GAS CORPORATION		Lease Pueblo Federal		Well No. 1
Unit Letter M	Section 30	Township 18 South	Range 31 East	County Eddy County, N.M.
Actual Footage Location of Well: 930 feet from the South line and 660 feet from the West line				
Ground Level Elev. 3561.	Producing Formation Bone Spring	Pool Wildcat	Dedicated Acreage 40 35.54 Acres	

- Outline the acreage dedicated to the subject well by colored pencil or hachure marks on the plat below.
- If more than one lease is dedicated to the well, outline each and identify the ownership thereof (both as to working interest and royalty).
- If more than one lease of different ownership is dedicated to the well, have the interests of all owners been consolidated by communitization, unitization, force-pooling, etc?

☐ Yes ☐ No If answer is "yes," type of consolidation _____

If answer is "no," list the owners and tract descriptions which have actually been consolidated. (Use reverse side of this form if necessary.) _____

No allowable will be assigned to the well until all interests have been consolidated (by communitization, unitization, forced-pooling, or otherwise) or until a non-standard unit, eliminating such interests, has been approved by the Commission.



CERTIFICATION

I hereby certify that the information contained herein is true and complete to the best of my knowledge and belief.

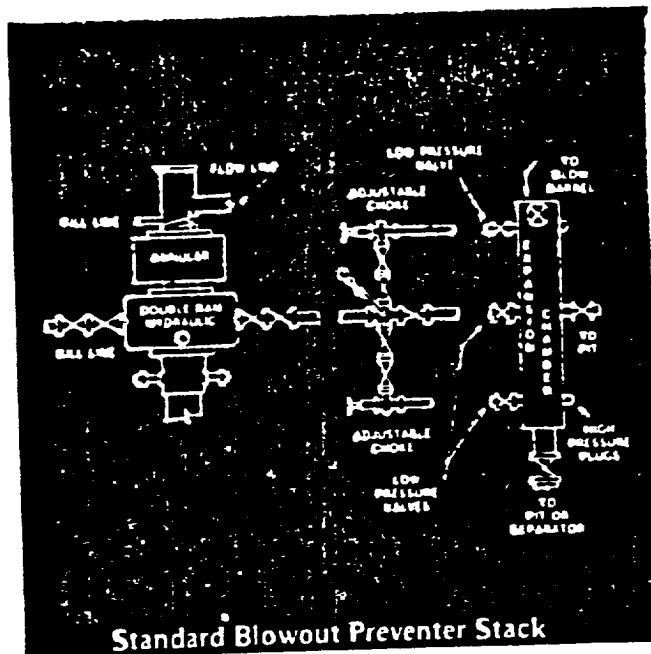
Name *D. V. Justice*
Position V.P. Drilling/Production
Company Siete Oil & Gas Corporation
Date July 27, 1988

I hereby certify that the well location shown on this plat was plotted from field notes of actual surveys made by me or under my supervision, and that the same is true and correct to the best of my knowledge and belief.

Date Surveyed July 13, 1988
Registered Professional Engineer and/or Land Surveyor

Dan R. Reddy
Certificate No.

NM PE&LS NO. 5412



One hydraulic double 10" X 900 series.
 One Hydril 10" X 900 series.
 Choke manifold 4" X 900 series flanged
 connections. 4 valve accumulator closing
 unit.

SUPPLEMENTAL DRILLING TA
SIETE OIL AND GAS CORPORATION

PUEBLO FEDERAL NO. 1

930' FSL & 660' FWL

Section 30: T18S, R31E

Eddy County, New Mexico

Lease Number - NM-029387

The following items supplement "Onshore Oil and Gas Order No. 1":

1. The geologic surface is quaternary.
2. The estimated geological marker tops:

Rustler	500'
B/Salt	1900'
Queen	3150'
Del. Sand	4500'
Bone S. Lime	6200'

3. Estimated depths to water, oil or gas:

Water: Approximately 350'
Oil or Gas: 8400'

4. Proposed casing program:

<u>Size</u>	<u>Interval</u>	<u>Weight</u>	<u>Grade</u>	<u>Joint</u>	<u>New or Used</u>
13 3/8"	0 - 500'	54.5#	J-55	ST&C	New
8 5/8"	0 - 2200'	24 & 32#	J-55	ST&C	New
5 1/2"	0 - T.D.'	15.5#	J-55	ST&C	New

5. Pressure Control Equipment: The blowout preventer will be a double ram type preventer. A sketch is attached.

6. Mud Program:

0-500': Native mud adding gel and lime for sufficient viscosity to insure clean hole for running casing.

500' - 2200': Drill out with native becoming brine.

2200' - T.D.: Drill out of intermediate with brine add starch and salt gel to maintain a viscosity of 30; mud weight 9.8 - 10.0, @ T.D. 40.0.

7. Auxiliary Equipment: A kelly cock will be installed on the rig floor while drilling operations are in progress.

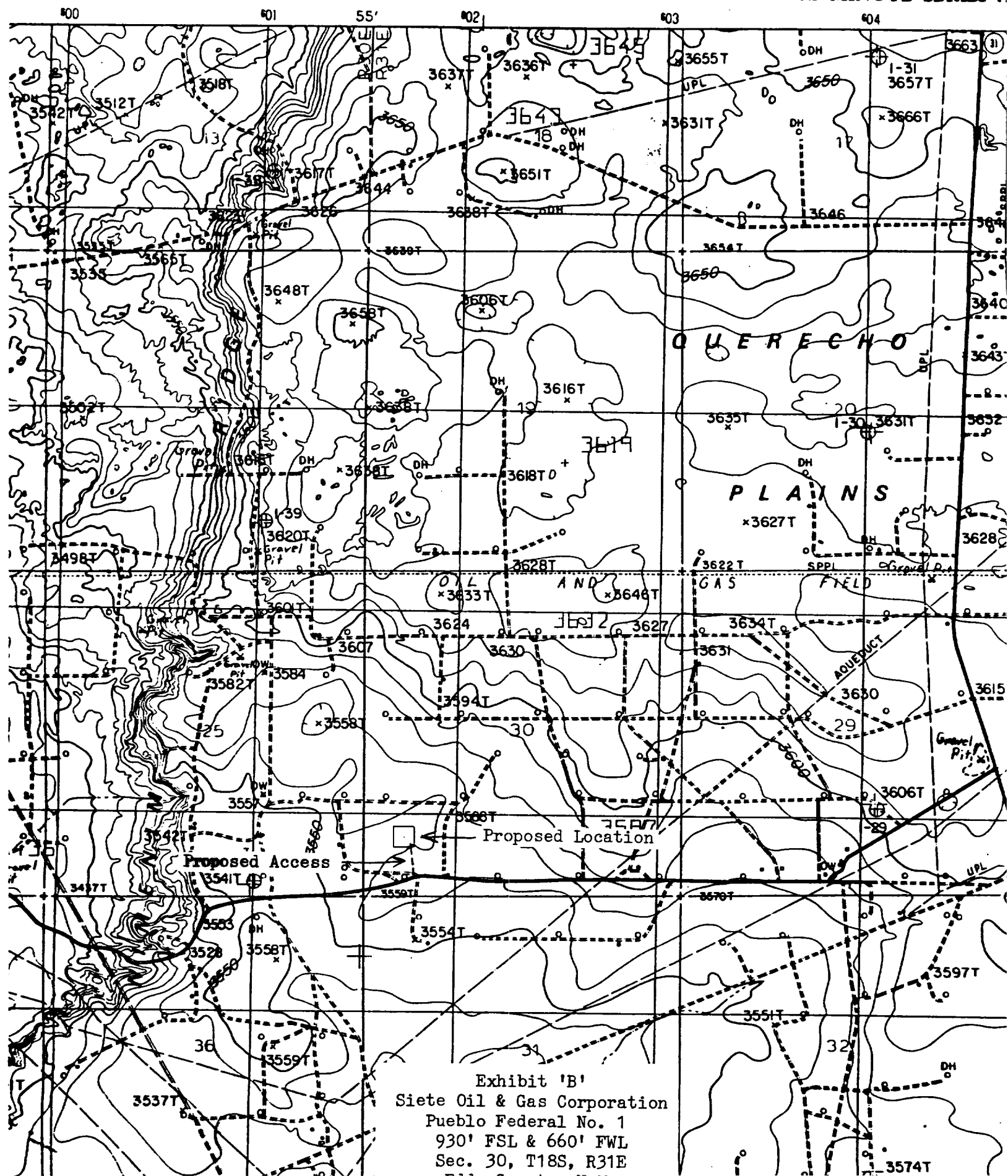
8. Testing, Logging and Coring Programs: Possible drill stem tests and/or coring is not planned.

Logging: Compensated Neutron - Formation Density - Gamma Ray - Caliper Dual Laterolog - RXO.

9. No abnormal pressures or temperature zones are anticipated.

10. Anticipated starting date: Commence drilling operations ASAP.

HACKBERRY LAKE
NEW MEXICO
7.5 MINUTE SERIES (1)



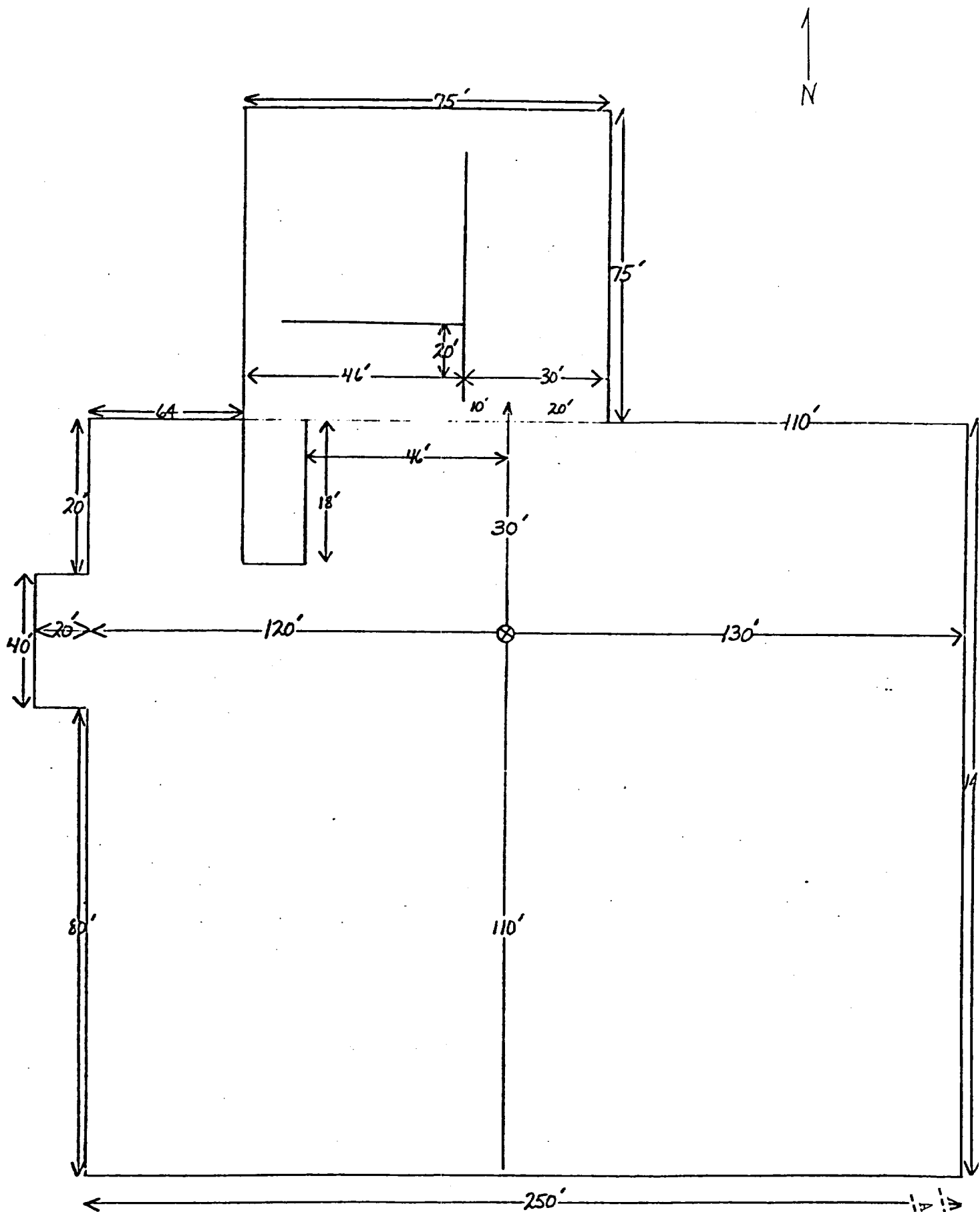


Exhibit 'D'
 Siete Oil & Gas Corporation
 Pueblo Federal No. 1
 930' FSL & 660' FWL
 Sec. 30, T18S, R31E