

UNITED STATES
DEPARTMENT OF THE INTERIOR
GEOLOGICAL SURVEY

APPLICATION FOR PERMIT TO DRILL, DEEPEN, OR PLUG BACK

1a. TYPE OF WORK
DRILL ☒ DEEPEN ☐ PLUG BACK ☐

b. TYPE OF WELL
OIL WELL ☒ GAS WELL ☐ OTHER ☐ SINGLE ZONE ☐ MULTIPLE ZONE ☐

2. NAME OF OPERATOR
Marathon Oil Company

3. ADDRESS OF OPERATOR
P. O. Box 552 Midland, TX 79702

4. LOCATION OF WELL (Report location clearly and in accordance with any State requirements)
At surface 510' FSL & 2030' FEL
At proposed prod. zone 510' FSL & 2030' FEL

14. DISTANCE IN MILES AND DIRECTION FROM NEAREST TOWN OR POST OFFICE*
10 miles ESE of Loco Hills, New Mexico

15. DISTANCE FROM PROPOSED* LOCATION TO NEAREST PROPERTY OR LEASE LINE, FT. (Also to nearest drlg. unit line, if any) 510'

16. NO. OF ACRES IN LEASE 960.26

17. NO. OF ACRES ASSIGNED TO THIS WELL 40

18. DISTANCE FROM PROPOSED LOCATION* TO NEAREST WELL, DRILLING, COMPLETED, OR APPLIED FOR, ON THIS LEASE, FT. ±1280'

19. PROPOSED DEPTH 9000'

20. ROTARY OR CABLE TOOLS Rotary

21. ELEVATIONS (Show whether DF, RT, GR, etc.) 2737
3730* GL

22. APPROX. DATE WORK WILL START* As Soon As Possible

5. LEASE DESIGNATION AND SERIAL NO. LC-029388 (d)

6. IF INDIAN, ALLOTTEE OR TRIBE NAME

7. UNIT AGREEMENT NAME

8. FARM OR LEASE NAME Johnson "B" Federal

9. WELL NO. 8

10. FIELD AND POOL, OR WILDCAT Tamano (Bone Spring)

11. SEC., T., R., M., OR BLK. AND SURVEY OR AREA Section 11
T-18-S, R-31-E

12. COUNTY OR PARISH Eddy

13. STATE New Mexico

23. PROPOSED CASING AND CEMENTING PROGRAM				
SIZE OF HOLE	SIZE OF CASING	WEIGHT PER FOOT	SETTING DEPTH	QUANTITY OF CEMENT
17 1/2"	13 3/8"	48	810'	825 sx - Circulate
11"	8 5/8"	24 & 32	2700'	1350 sx - Circulate
7 7/8"	5 1/2"	15.5	9000'	1500 sx

Propose to drill no deeper than 9000'.
All casing will be in accordance with Regulations and
by approved methods.
Blowout Preventors will be applied as outlined in
Additional Information (see Exhibits).

IN ABOVE SPACE DESCRIBE PROPOSED PROGRAM: If proposal is to deepen or plug back, give data on present productive zone and proposed new productive zone. If proposal is to drill or deepen directionally, give pertinent data on subsurface locations and measured and true vertical depths. Give blowout preventer program, if any.

24. SIGNED [Signature] TITLE District Drilling Supt. DATE 8/8/88
(This space for Federal or State office use)

PERMIT NO. _____ APPROVAL DATE _____
AREA MANAGER
APPROVED BY Ras Gure TITLE CARLEAS RESOURCE DATE 9-8-88
CONDITIONS OF APPROVAL, IF ANY:

**NEW MEXICO OIL CONSERVATION COMMISSION
WELL LOCATION AND ACREAGE DEDICATION PLAT**

Form C-102
Supersedes C-128
Effective 1-1-65

All distances must be from the outer boundaries of the Section

Operator Marathon Oil Company			Lease Johnson Federal		Well No. 8
Unit Letter 0	Section 11	Township 18 South	Range 31 East	County Eddy County	
Actual Footage Location of Well: 510 feet from the South line and 2030 feet from the East line					
Ground Level Elev. 3737.0	Producing Formation Bone Spring		Pool TAMAROC BONE SPRING Undesignated		Dedicated Acreage: 40 Acres

1. Outline the acreage dedicated to the subject well by colored pencil or hatchure marks on the plat below.
2. If more than one lease is dedicated to the well, outline each and identify the ownership thereof (both as to working interest and royalty).
3. If more than one lease of different ownership is dedicated to the well, have the interests of all owners been consolidated by communitization, unitization, force-pooling, etc?

☐ Yes ☐ No If answer is "yes," type of consolidation _____

If answer is "no," list the owners and tract descriptions which have actually been consolidated. (Use reverse side of this form if necessary.) _____

No allowable will be assigned to the well until all interests have been consolidated (by communitization, unitization, forced-pooling, or otherwise) or until a non-standard unit, eliminating such interests, has been approved by the Commission.

CERTIFICATION

I hereby certify that the information contained herein is true and complete to the best of my knowledge and belief.

Name

Stanley L. Atnipp

Position

District Drilling Supt.

Company

Marathon Oil Company

Date

August 8, 1988

I hereby certify that the well location shown on this plat was plotted from field notes of actual surveys made by me or under my supervision, and that the same is true and correct to the best of my knowledge and belief.

Date Surveyed

July 28, 1988

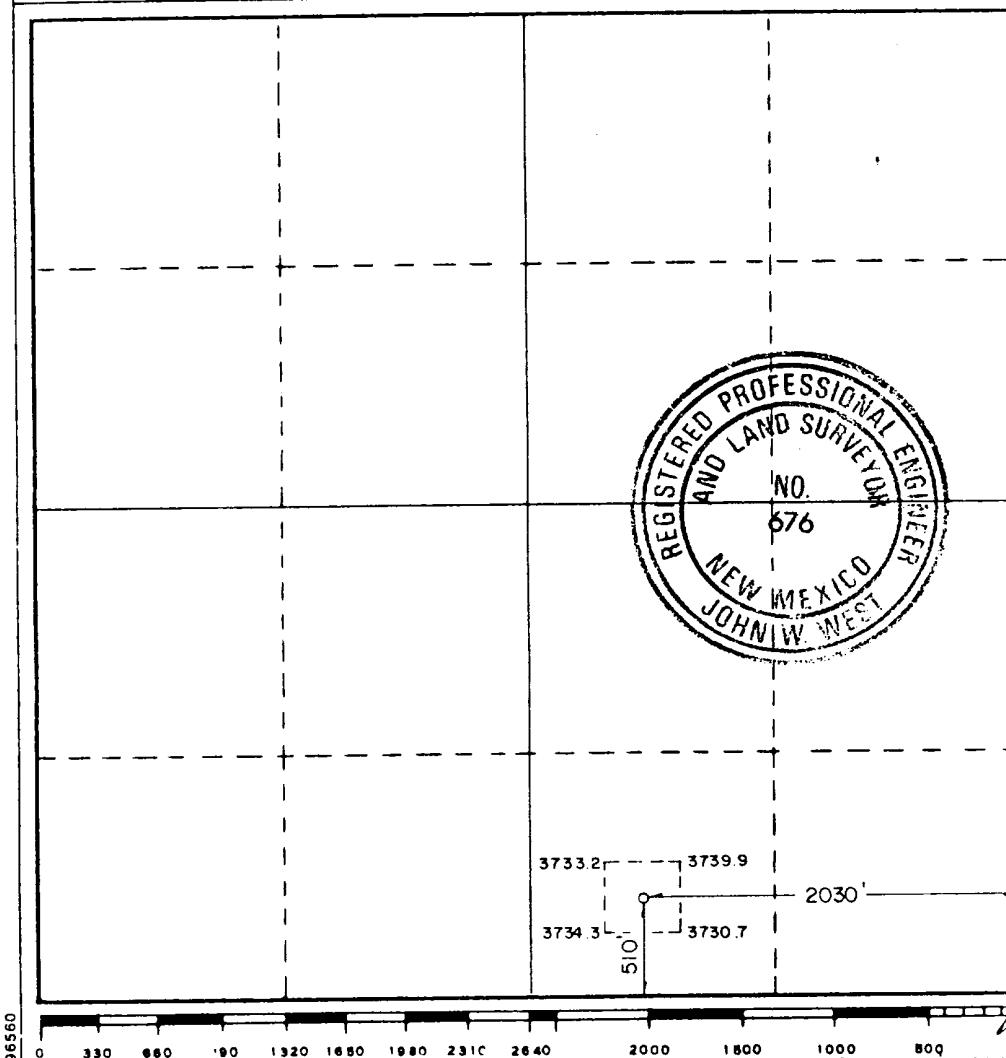
Registered Professional Engineer and/or Land Surveyor

Certificate No. **JOHN W. WEST,**

676

RONALD J. EIDSON,

3239



96560

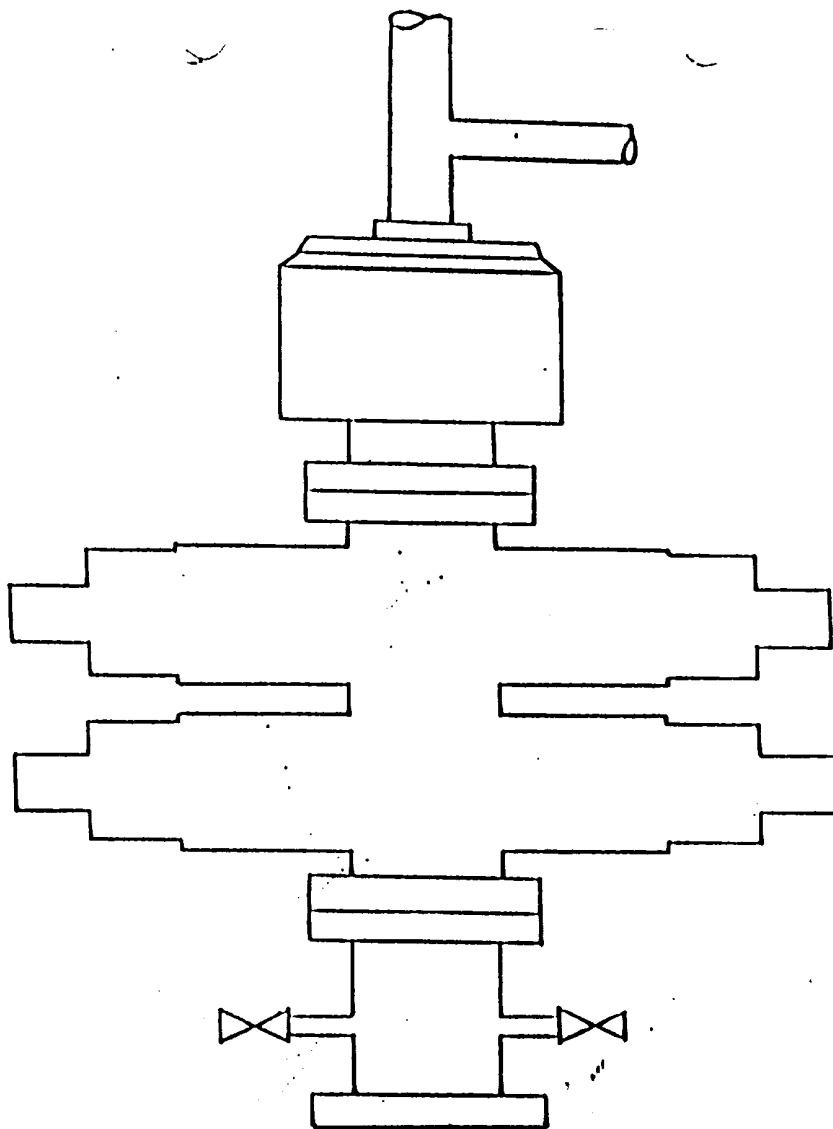


EXHIBIT "A"
JOHNSON "B" FEDERAL #8
BOP STACK ARRANGEMENT
13 3/8" Surface Casing

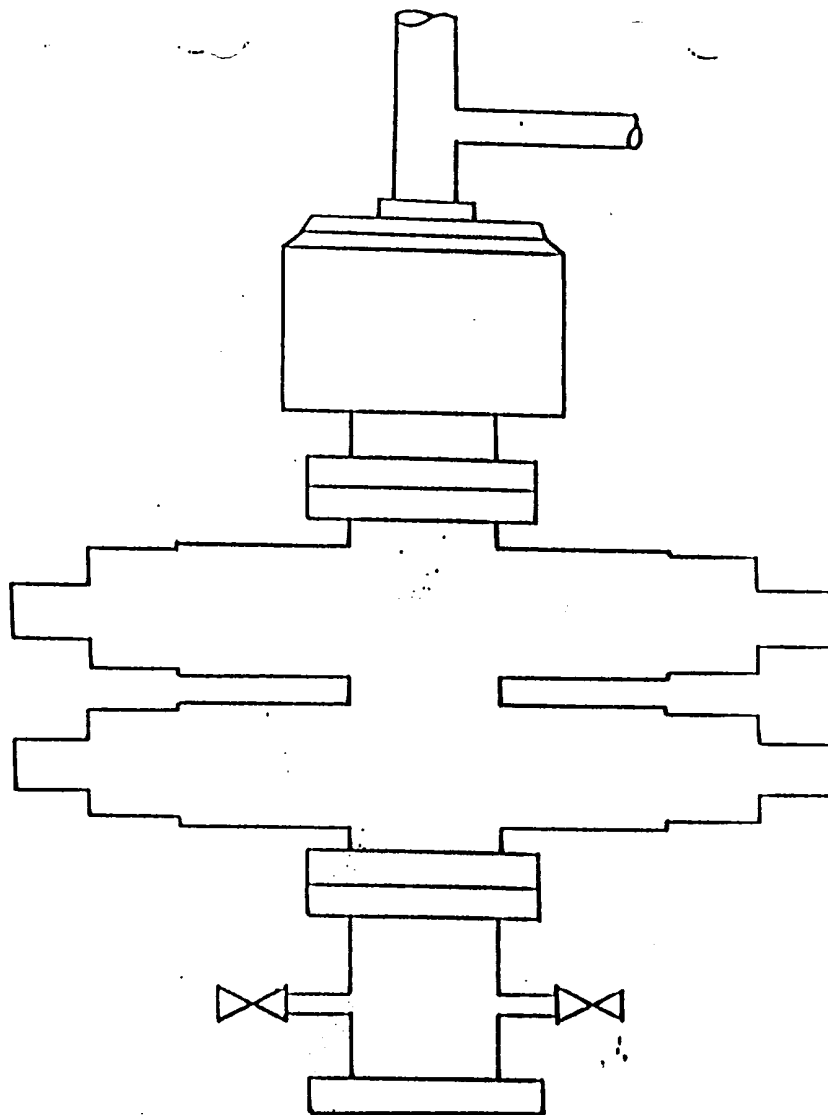


EXHIBIT "B"
JOHNSON "B" FEDERAL #8
BOP STACK ARRANGEMENT
8 5/8" Intermediate Casing

MARATHON OIL COMPANY

JOHNSON "B" FEDERAL #8
ADDITIONAL INFORMATION
Comply with Order 1

In conjunction with Form 9-331C, Application to drill subject well, Marathon Oil Company submits the following items of information in accordance with BLM requirements:

1. Geological Name of Surface Formation

Quaternary Alluvium

2. Estimated Tops of Important Geological Markers

Rustler	810'	Delaware	4710'
Base of Salt	2120'	Bone Spring	5890'
Yates	2280'	1st Sand	7580'
Seven Rivers	2650'	2nd Carb	7890'
Queen	3335'	2nd Sand	8190'
Grayburg	3900'	3rd Carb	8840'
San Andres	4430'		

3. Estimated Depths of Anticipated Water, Oil or Gas Bearing Formations

Yates (water)	2280'	Bone Spring	5890'
Seven Rivers (water)	2650'	1st Sand (water & oil)	7580'
Queen (water & oil)	3335'	2nd Carb (water & oil)	7890'
Grayburg (water & oil)	3900'	2nd Sand (water & oil)	8190'
San Andres (water & oil)	4430'	3rd Carb (water & oil)	8840'
Delaware (water & oil)	4710'		

4. Casing and Cementing Program

13 3/8" Surface to 810':	Cement to surface with 835 sxs Class "C" with 2% CaCl ₂
--------------------------	--

7. Auxiliary Equipment

A stabbing valve will be kept on the floor to be used when the kelly is not in the string.

8. Testing, Logging, and Coring Programs

A. Coring Program:

None Anticipated

B. Testing Program:

None Anticipated

C. Logging Program:

TD to intermediate casing - GR/DLL, GR/Micro-Log, GR/LDT/CNL,
GR/Sonic, NGT

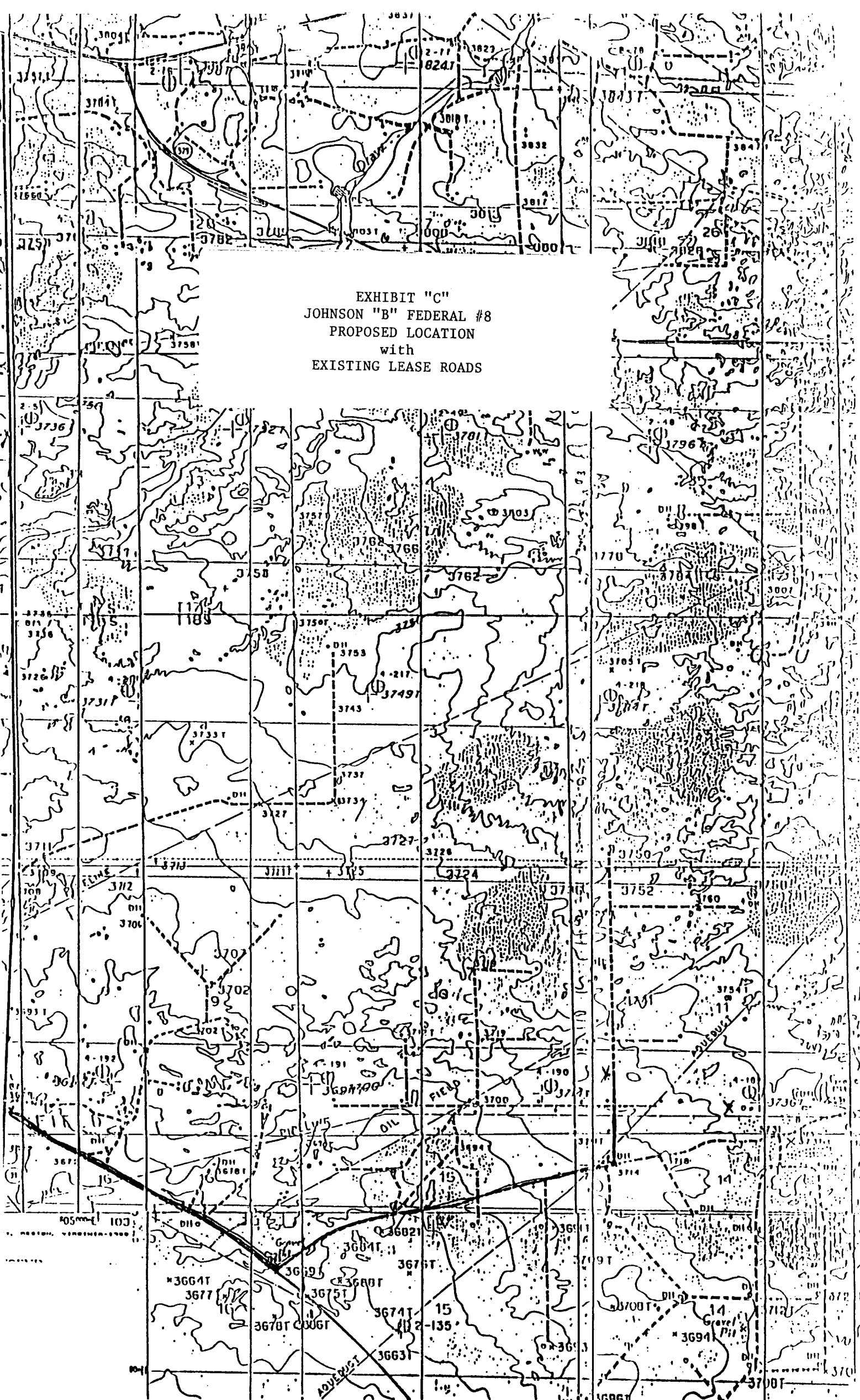
9. Abnormal Pressures, Temperatures or Potential Hazards

None Anticipated

10. Anticipated Starting Date

As soon as possible

EXHIBIT "C"
JOHNSON "B" FEDERAL #8
PROPOSED LOCATION
with
EXISTING LEASE ROADS



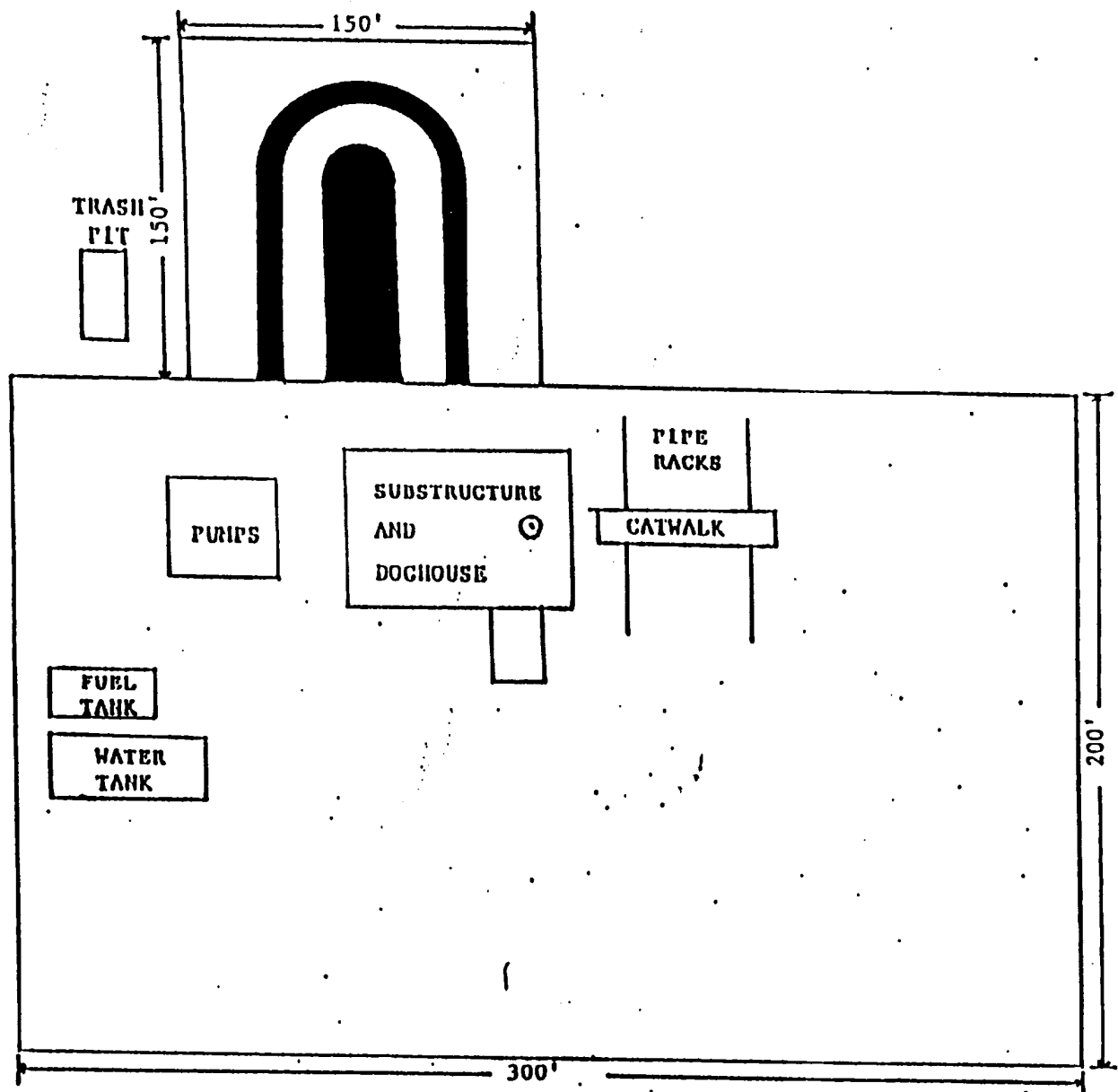


EXHIBIT "E"
 JOHNSON "B" FEDERAL #8
 RELATIVE LOCATION
 of
 RIG COMPONENTS