

NEW MEXICO OIL CONSERVATION COMMISSION  
WELL LOCATION AND ACREAGE DEDICATION PLAT

RECEIVED

Form C-102  
Supersedes C-128  
Effective 1-1-65

All distances must be from the outer boundaries of the Section

MAY 25 '90

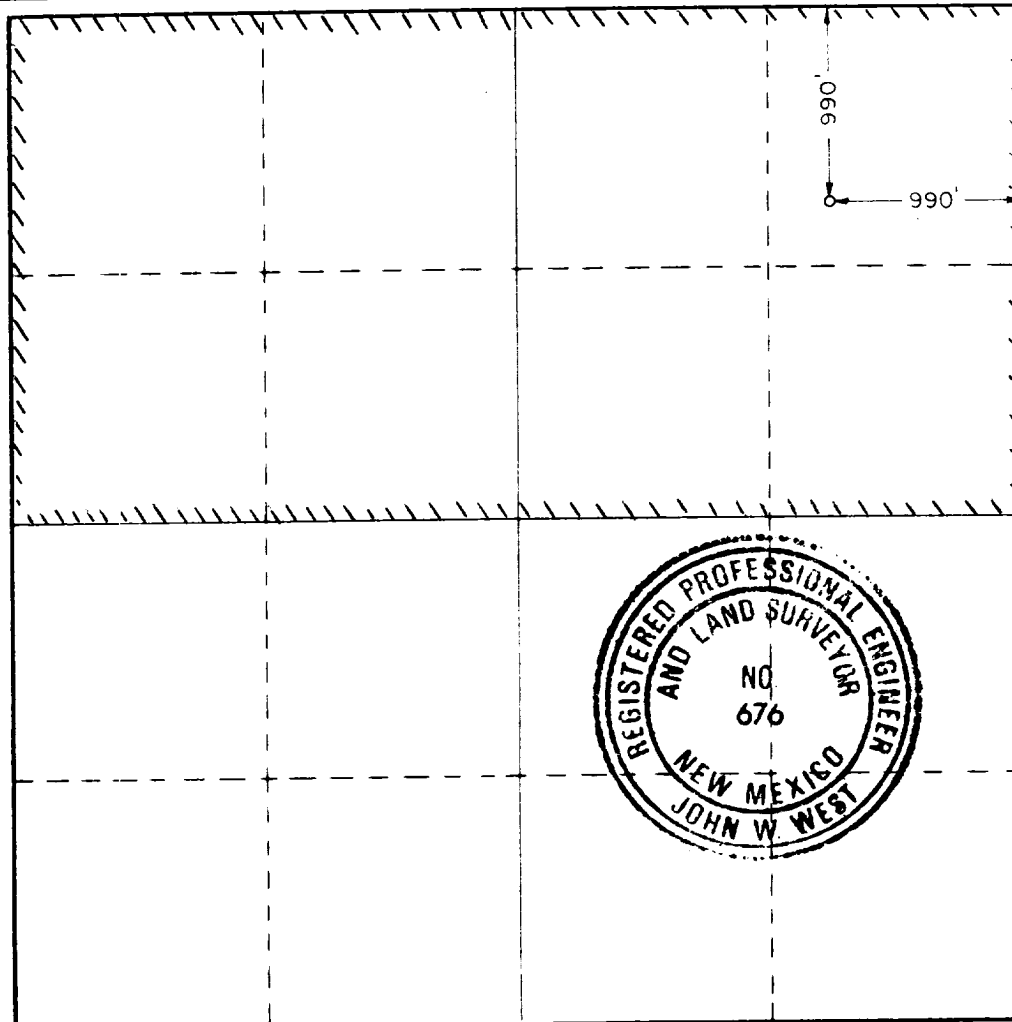
Operator Nearburg Producing Company			Lease Rose "12A"		Well No. D. 1
Unit Letter A	Section 12	Township 19 South	Range 25 East	County ARTESIA, OFFICE Eddy	
Actual Footage Location of Well: 990 feet from the North line and 990 feet from the East line					
Ground Level Elev. 3391.9	Producing Formation Strawn	Pool Wildcat	Dedicated Acreage: 320 Acres		

1. Outline the acreage dedicated to the subject well by colored pencil or hatchure marks on the plat below.
2. If more than one lease is dedicated to the well, outline each and identify the ownership thereof (both as to working interest and royalty).
3. If more than one lease of different ownership is dedicated to the well, have the interests of all owners been consolidated by communitization, unitization, force-pooling, etc?

☒ Yes ☐ No If answer is "yes," type of consolidation Pooling

If answer is "no," list the owners and tract descriptions which have actually been consolidated. (Use reverse side of this form if necessary.)

No allowable will be assigned to the well until all interests have been consolidated (by communitization, unitization, forced-pooling, or otherwise) or until a non-standard unit, eliminating such interests, has been approved by the Commission.



CERTIFICATION

I hereby certify that the information contained herein is true and complete to the best of my knowledge and belief.

Name Lathie Craft  
Position Land Administrator  
Company Nearburg Producing co.  
Date May 23, 1990

I hereby certify that the well location shown on this plat was plotted from field notes of actual surveys made by me or under my supervision, and that the same is true and correct to the best of my knowledge and belief.

Date Surveyed August 23, 1988  
Registered Professional Engineer and/or Land Surveyor John W. West

Certificate No. JOHN W. WEST, 676  
RONALD J. EIDSON, 3239