

UNITED STATES
DEPARTMENT OF THE INTERIOR
BUREAU OF LAND MANAGEMENT

30-015-26012
Form approved,
Budget Bureau No. 1004-0136
Expires August 31, 1985

APPLICATION FOR PERMIT TO DRILL, DEEPEN, OR PLUG BACK

1a. TYPE OF WORK

DRILL ☒

DEEPEN ☐

PLUG BACK ☐

b. TYPE OF WELL

OIL
WELL ☒

GAS
WELL ☐

OTHER

SINGLE
ZONE ☒

MULTIPLE
ZONE ☐

2. NAME OF OPERATOR

Siete Oil & Gas Corporation

3. ADDRESS OF OPERATOR

P.O. Box 2523

Roswell, NM 88202-2523

4. LOCATION OF WELL (Report location clearly and in accordance with any State requirements)

At surface

790' FNL & 1650' FEL, NW $\frac{1}{4}$ NE $\frac{1}{4}$, Unit Letter B

At proposed prod. zone

Same

14. DISTANCE IN MILES AND DIRECTION FROM NEAREST TOWN OR POST OFFICE*

14.75 miles Southeast of Loco Hills, New Mexico

10. DISTANCE FROM PROPOSED*

LOCATION TO NEAREST
PROPERTY OR LEASE LINE, FT.
(Also to nearest drlg. unit line, if any)

790'

18. DISTANCE FROM PROPOSED LOCATION*

TO NEAREST WELL, DRILLING, COMPLETED,
OR APPLIED FOR, ON THIS LEASE, FT.

330'

16. NO. OF ACRES IN LEASE

320

19. PROPOSED DEPTH

5650'

17. NO. OF ACRES ASSIGNED
TO THIS WELL

40

20. ROTARY OR CABLE TOOLS

Rotary

21. ELEVATIONS (Show whether DF, RT, GR, etc.)

3722' GR

22. APPROX. DATE WORK WILL START*

ASAP

23. PROPOSED CASING AND CEMENTING PROGRAM

SIZE OF HOLE	SIZE OF CASING	WEIGHT PER FOOT	SETTING DEPTH	QUANTITY OF CEMENT
12 $\frac{1}{4}$ "	8 5/8"	24.0#	350'	250 sks Class C circ
7 7/8"	5 $\frac{1}{2}$ "	15.5#	5650'	2200 sks Class C

Selectively perforate & treat pay zones.

Attachments:

Survey Plat (C-102)
Supplemental Drilling Data
Surface Use Plan

Post ID-1
NL & API
12-2-88

IN ABOVE SPACE DESCRIBE PROPOSED PROGRAM: If proposal is to deepen or plug back, give data on present productive zone and proposed new productive zone. If proposal is to drill or deepen directionally, give pertinent data on subsurface locations and measured and true vertical depths. Give blowout preventer program, if any.

24.

SIGNED

Harold O. Justice CB

TITLE V.P. Drilling & Production

DATE 11/3/88

(This space for Federal or State office use)

PERMIT NO.

Orig. Signed by Richard L. Manis

APPROVAL

CARLSBAD RESOURCE AREA

APPROVED BY

TITLE

DATE

11-28-88

CONDITIONS OF APPROVAL, IF ANY:

*See Instructions On Reverse Side

NEW MEXICO OIL CONSERVATION COMMISSION
WELL LOCATION AND ACREAGE DEDICATION PLAT

NOV 7 1988

Form C-102
Revised C-128
Effective 1-1-65

All distances must be from the outer boundaries of the Section.

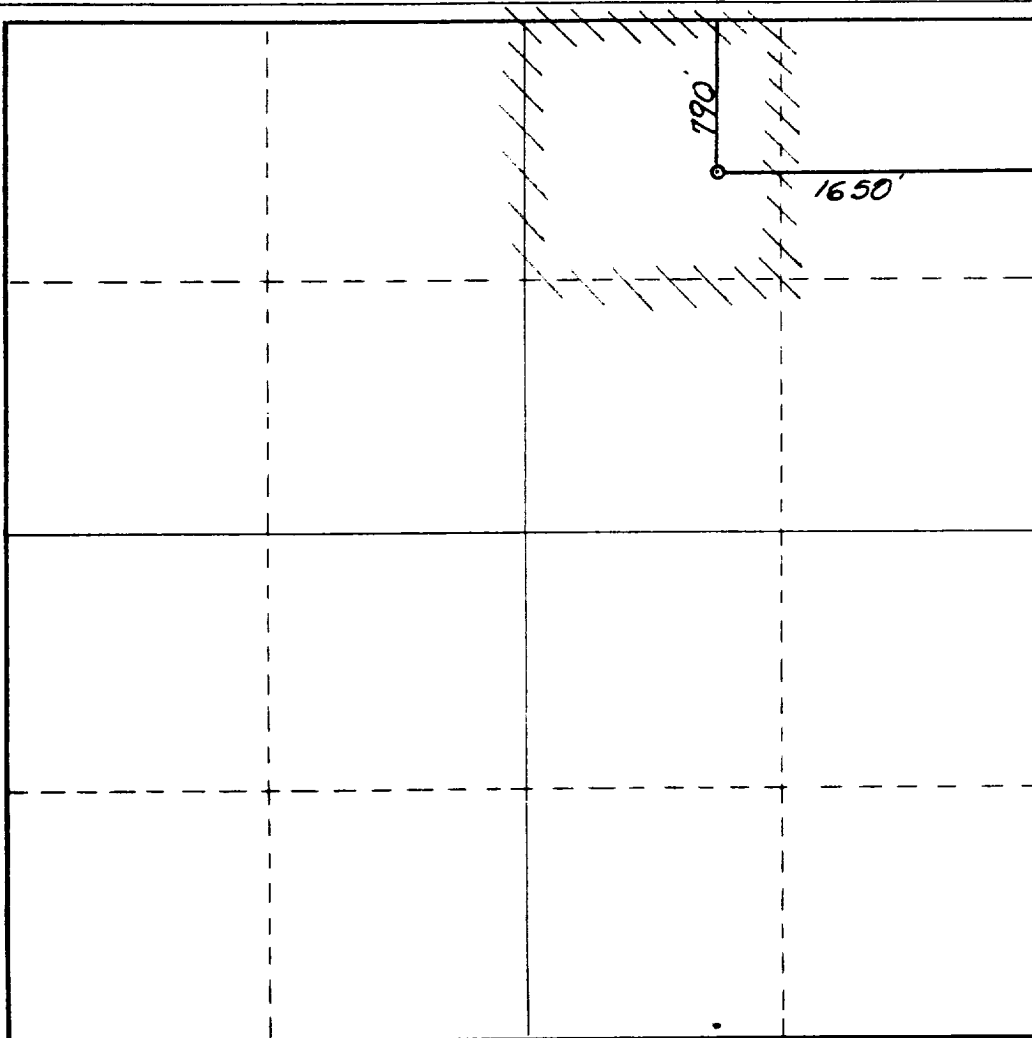
Operator SIETE OIL & GAS CORPORATION		Lease Geronimo Federal		Well No. 12
Unit Letter B	Section 24	Township 18 South	Range 31 East	County Eddy County, N.M.
Actual Footage Location of Well: 16 50 feet from the East line and 790 feet from the North line				
Ground Level Elev. 3722.	Producing Formation Delaware	Pool East Shugart Delaware	Dedicated Acreage: 40 Acres	

1. Outline the acreage dedicated to the subject well by colored pencil or hachure marks on the plat below.
2. If more than one lease is dedicated to the well, outline each and identify the ownership thereof (both as to working interest and royalty).
3. If more than one lease of different ownership is dedicated to the well, have the interests of all owners been consolidated by communitization, unitization, force-pooling, etc?

☐ Yes ☐ No If answer is "yes," type of consolidation _____

If answer is "no," list the owners and tract descriptions which have actually been consolidated. (Use reverse side of this form if necessary.) _____

No allowable will be assigned to the well until all interests have been consolidated (by communitization, unitization, forced-pooling, or otherwise) or until a non-standard unit, eliminating such interests, has been approved by the Commission.



CERTIFICATION

I hereby certify that the information contained herein is true and complete to the best of my knowledge and belief.

Harold E. Justus
 Name
V.P. Drilling & Production
 Position
Siete Oil & Gas Corporation
 Company
November 9, 1988
 Date

I hereby certify that the well location shown on this plat was plotted from field notes of actual surveys made by me or under my supervision, and that the same is true and correct to the best of my knowledge and belief.

Date Surveyed
October 31, 1988
 Registered Professional Engineer
 and/or Land Surveyor

Dan R. Reddy
 Certificate No.
NM PE&LS NO. 5412

RECEIVED

Nov 29 11 22 AM '88

CARL
AREA

BOP DIAGRAM

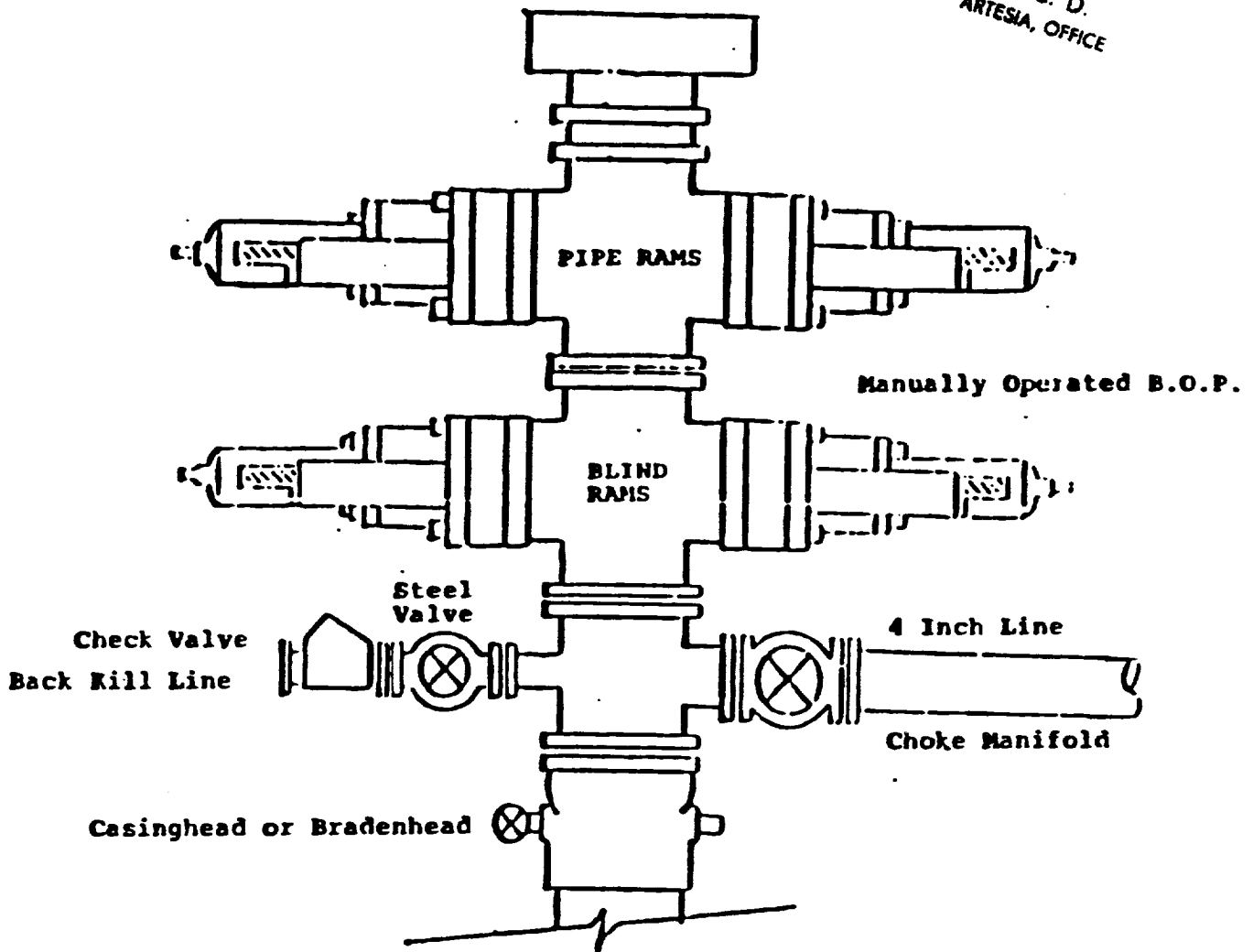
RATED 30001

S. to Oil
German #12
NM-025777

RECEIVED

DEC 02 '88

O. C. D.
ARTESIA, OFFICE



SUPPLEMENTAL DRILLING DATA
SIETE OIL AND GAS CORPORATION
GERONIMO FEDERAL NO. 12
790' FNL & 1650' FEL
Section 24: T18S, R31E
Eddy County, New Mexico
Lease Number: NM-025777

The following items supplement "Onshore Oil and Gas Order No. 1":

1. The geologic surface is quaternary.
2. The estimated geological marker tops:

Yates	2446'
Queen	3520'
Grayburg	4040'
San Andres	4440'
Delaware	4600'

3. Estimated depths to water, oil or gas:

Water: Approximately 220'
Oil or Gas: 5000' - 5200'

4. Proposed casing program:

<u>Size</u>	<u>Interval</u>	<u>Weight</u>	<u>Grade</u>	<u>Joint</u>	<u>New or Used</u>
8 5/8"	0 - 350'	24#	J-55	ST&C	New
5 1/2"	0 - 5650'	15.5#	J-55	ST&C	New

5. Pressure Control Equipment: The blowout preventer will be a double ram type preventer. A sketch is attached.
6. Mud Program:
0-350': Native mud adding gel and lime for sufficient viscosity to insure clean hole for running casing.
350' - 5650': Drill out with native becoming brine.
7. Auxiliary Equipment: A kelly cock will be installed on the rig floor while drilling operations are in progress.
8. Testing, Logging and Coring Programs: Possible drill stem tests and/or coring is not planned.
Logging: Compensated Neutron - Formation Density - Gamma Ray - Caliper Dual Laterolog - RXO.
9. No abnormal pressures or temperature zones are anticipated.
10. Anticipated starting date: Commence drilling operations ASAP.

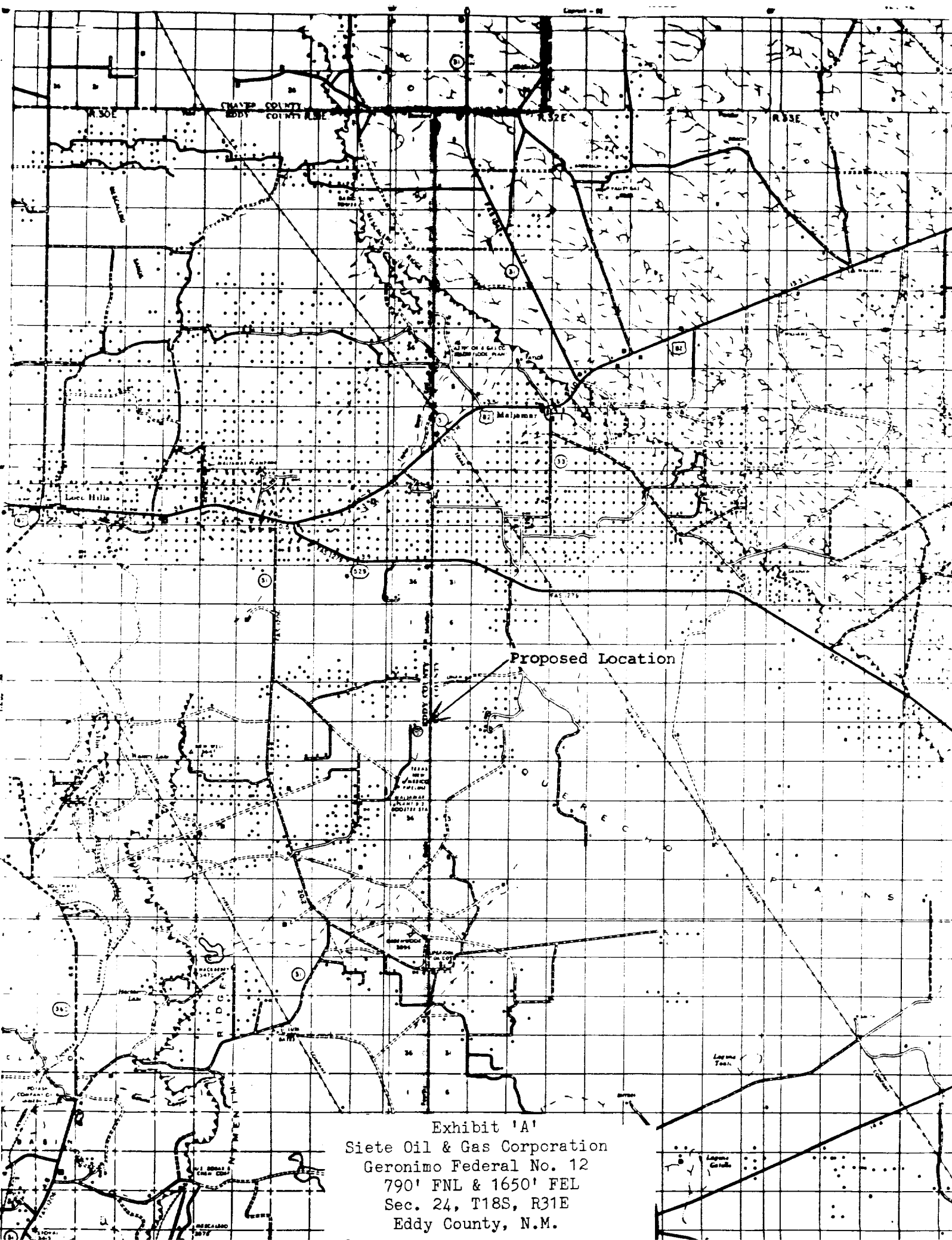
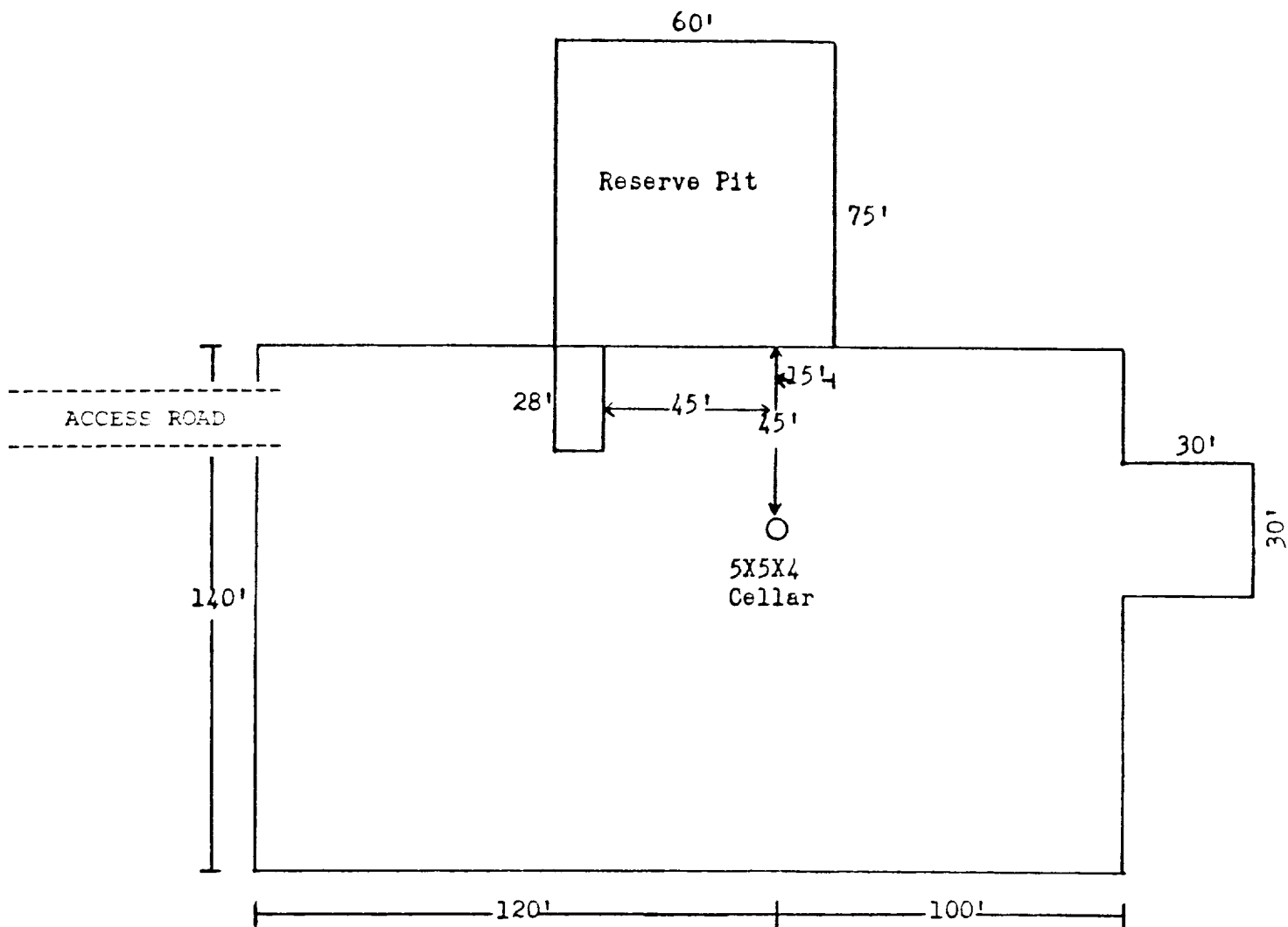


Exhibit 'A'
Siete Oil & Gas Corporation
Geronimo Federal No. 12
790' FNL & 1650' FEL
Sec. 24, T18S, R31E
Eddy County, N.M.



I&M Drilling Rig No. 1

Exhibit 'D'
 Siete Oil & Gas Corporation
 Geronimo Federal No. 12
 790' FNL & 1650' FEL
 Sec. 24, T18S, R31E
 Eddy County, N.M.