

**NEW MEXICO OIL CONSERVATION COMMISSION
WELL LOCATION AND ACREAGE DEDICATION PLAT**

Form C-102
Supersedes C-128
Effective 1-1-65

All distances must be from the outer boundaries of the Section.

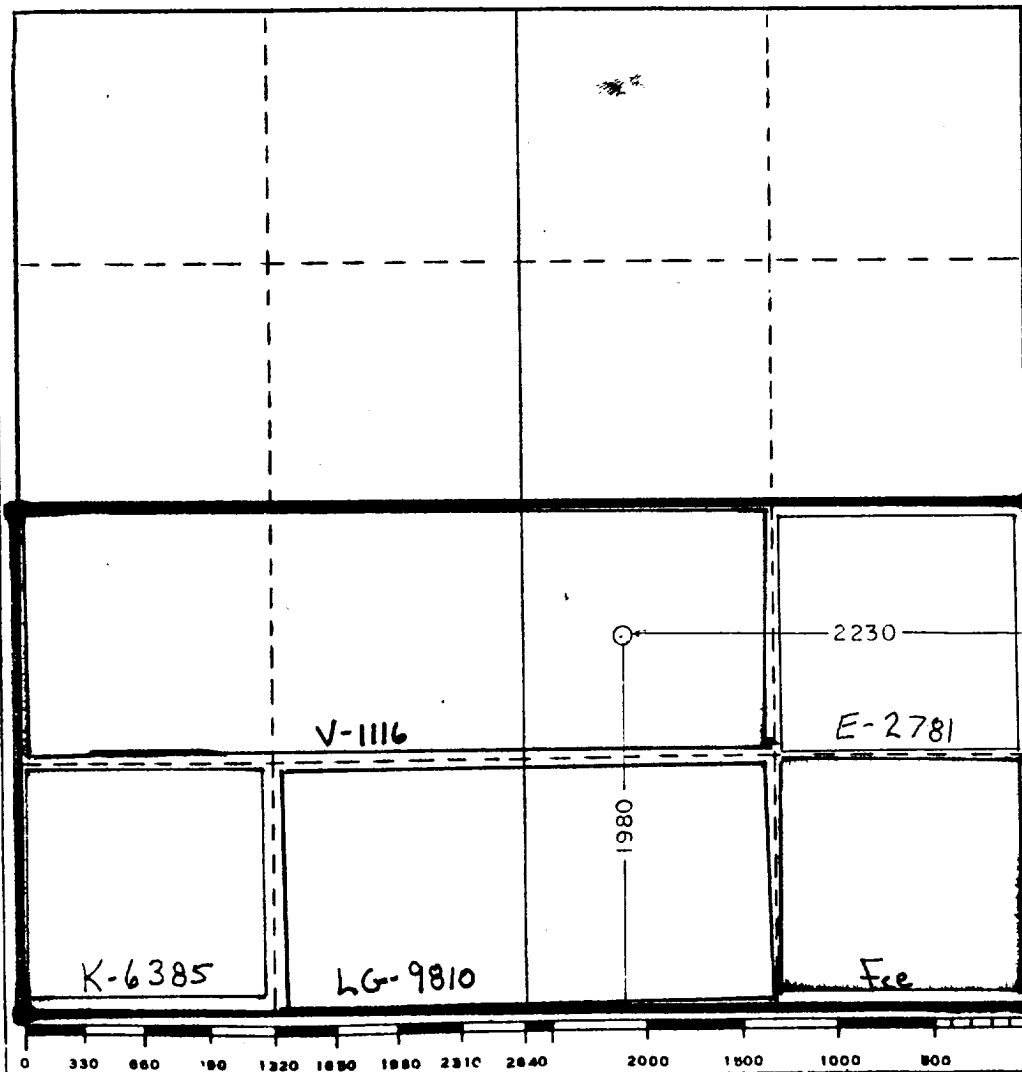
Operator YATES PETROLEUM CORPORATION		Lease CACTI "AGB" State Com.		Well No. 1
Init Letter "J"	Section 2	Township 20 South	Range 24 East	County Eddy
Actual Footage Location of Well: 1930 feet from the South line and 2230 feet from the East line				
Ground Level Elev. 3640.1	Producing Formation <i>Mogave</i>	Pool <i>Wildcat Morrow</i>	Dedicated Acreage: 320 Acres	

1. Outline the acreage dedicated to the subject well by colored pencil or hachure marks on the plat below.
2. If more than one lease is dedicated to the well, outline each and identify the ownership thereof (both as to working interest and royalty).
3. If more than one lease of different ownership is dedicated to the well, have the interests of all owners been consolidated by communitization, unitization, force-pooling, etc?

☒ Yes ☐ No If answer is "yes," type of consolidation to be COMMUNITIZED

If answer is "no," list the owners and tract descriptions which have actually been consolidated. (Use reverse side of this form if necessary.) _____

No allowable will be assigned to the well until all interests have been consolidated (by communitization, unitization, forced-pooling, or otherwise) or until a non-standard unit, eliminating such interests, has been approved by the Commission.



CERTIFICATION

I hereby certify that the information contained herein is true and complete to the best of my knowledge and belief.

Ken Beardemphl

Name

Ken Beardemphl

Position

Landman

Company

Yates Petroleum Corporation

Date

December 22, 1988

I hereby certify that the well location shown on this plat was plotted from field notes of actual surveys made by me or under my supervision, and that the same is true and correct to the best of my knowledge and belief.

Date Surveyed

December 15, 1988

Registered Professional Engineer and/or Surveyor

[Signature]
3640
REGISTERED LAND SURVEYOR

Certificate No. 3640