

UNITED STATES
DEPARTMENT OF THE INTERIOR
BUREAU OF LAND MANAGEMENT

APPLICATION FOR PERMIT TO DRILL, DEEPEN, OR PLUG BACK

1a. TYPE OF WORK

DRILL ☒

DEEPEN ☐

PLUG BACK ☐

b. TYPE OF WELL

OIL
WELL ☒

GAS
WELL ☐

OTHER ☐

SINGLE
ZONE ☐

MULTIPLE
ZONE ☐

2. NAME OF OPERATOR

McClellan Oil Corporation

3. ADDRESS OF OPERATOR

P. O. Dr. 730 Roswell, NM 88202

4. LOCATION OF WELL (Report location clearly and in accordance with any State requirements)
At surface

330' FSL & 330' FEL

At proposed prod. zone

same

14. DISTANCE IN MILES AND DIRECTION FROM NEAREST TOWN OR POST OFFICE*

7 miles southeast of Lakewood, NM

10. DISTANCE FROM PROPOSED*

LOCATION TO NEAREST
PROPERTY OR LEASE LINE, FT.
(Also to nearest drlg. unit line, if any)

330'

16. NO. OF ACRES IN LEASE

320

17. NO. OF ACRES ASSIGNED
TO THIS WELL

40

18. DISTANCE FROM PROPOSED LOCATION*
TO NEAREST WELL, DRILLING, COMPLETED,
OR APPLIED FOR, ON THIS LEASE, FT.

N/A

19. PROPOSED DEPTH

1900'

20. ROTARY OR CABLE TOOLS

Cable Tool

21. ELEVATIONS (Show whether DF, RT, GR, etc.)

3405' GL

22. APPROX. DATE WORK WILL START*

February 26, 1989

23.

PROPOSED CASING AND CEMENTING PROGRAM

SIZE OF HOLE	SIZE OF CASING	WEIGHT PER FOOT	SETTING DEPTH	QUANTITY OF CEMENT
12 1/4"	8 5/8"	24#	250'	100 sx "C" <u>circulated</u>
7 7/8"	4 1/2"	10.5#	1900'	200 sx "C"

Propose to drill to 1900 feet in order to test the Queen and Grayburg formations.
If commercial production is indicated will run 4 1/2" casing and attempt completion.

Mud Program: None used except mud created during drilling by cable tool rig.

BOP Program: A Henderlitter mechanical single control gate will be used on the cable tool rig and will have a 3000 psi working pressure.

APPROVAL SUBJECT TO
GENERAL REQUIREMENTS AND
SPECIAL STIPULATIONS
ATTACHED

Foot ID-1
NA & API
1-27-89

RECEIVED
DEC 23 10 49 AM '88
CABLE TOOL RIG
AREA MANAGER

IN ABOVE SPACE DESCRIBE PROPOSED PROGRAM: If proposal is to deepen or plug back, give data on present productive zone and proposed new productive zone. If proposal is to drill or deepen directionally, give pertinent data on subsurface locations and measured and true vertical depths. Give blowout preventer program, if any.

24.

SIGNED

George Smith

TITLE

Agent for:

McClellan Oil Corporation

DATE

Dec. 21, 1988

(This space for Federal or State office use)

PERMIT NO.

APPROVAL DATE

APPROVED BY

Orig. Signed by Richard L. M...

TITLE

AREA MANAGER

CARLSBAD RESOURCE AREA

DATE

1-17-89

CONDITIONS OF APPROVAL, IF ANY:

*See Instructions On Reverse Side

OIL CONSERVATION DIVISION

STATE OF NEW MEXICO
ENERGY AND MINERALS DEPARTMENTP. O. BOX 2088
SANTA FE, NEW MEXICO 87501Form C-102
Revised 10-1-78

All distances must be from the outer boundaries of the Section.

Operator McCLELLAN OIL CORP.		Lease ARCO FEDERAL		Well No. #1	
Unit Letter P	Section 34	Township 19 SOUTH	Range 27 EAST	County EDDY	
Actual Footage Location of Well: 330 feet from the SOUTH line and 330 feet from the EAST line					
Ground Level Elev. 3405	Producing Formation Queen - Grayburg		Pool East McMillan Queen	Dedicated Acreage 40 Acres	

1. Outline the acreage dedicated to the subject well by colored pencil or hatchure marks on the plat below.
2. If more than one lease is dedicated to the well, outline each and identify the ownership thereof (both as to working interest and royalty).
3. If more than one lease of different ownership is dedicated to the well, have the interests of all owners been consolidated by communitization, unitization, force-pooling, etc?

☐ Yes ☐ No If answer is "yes," type of consolidation _____

If answer is "no," list the owners and tract descriptions which have actually been consolidated. (Use reverse side of this form if necessary.) _____

No allowable will be assigned to the well until all interests have been consolidated (by communitization, unitization, forced-pooling, or otherwise) or until a non-standard unit, eliminating such interests, has been approved by the Division.

SEC. 34, T. 19 S, R. 27 E., NMPM

CERTIFICATION

I hereby certify that the information contained herein is true and complete to the best of my knowledge and belief.

Mark McClellan

Name

Mark McClellan

Position

Geologist

Company

McClellan Oil Corporation

Date

December 8, 1988

I hereby certify that the well location shown on this plat was plotted from field notes of actual surveys made by me or under my supervision, and that the same is true and correct to the best of my knowledge and belief.

NM-31951

McClellan Oil Corp.

330'

Date Surveyed

DECEMBER 8, 1988

Registered Professional Engineer
and/or Land Surveyor

John D. Jaquies, P.E. & L.S.

Certificate No. 6290

310 640 90 1270 1600 1930 2240 2500 2800 3100 3400 3700 4000 4300 4600 4900 5200 5500 5800 6100 6400 6700 7000 7300 7600 7900 8200 8500 8800 9100 9400 9700 10000



SHAFFER TOOL WORKS



PREVENTERS

SHAFFER MECHANICAL CONTROL GATES

(Patented)

PARTS FOR TYPE 45 SINGLE GATES

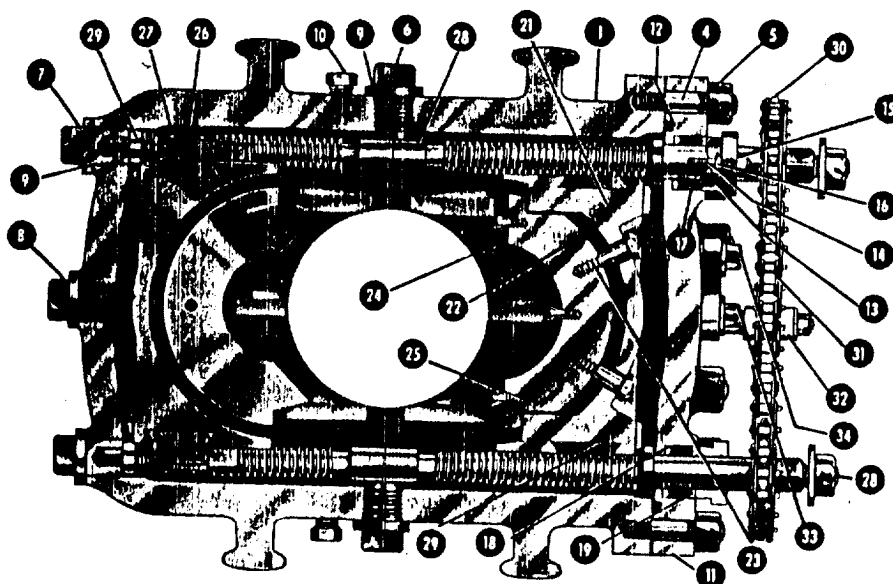


Fig. 84

Shaffer Type 45 Mechanical Single Control Gate—Top View

Part No.	No. Req'd.	NAME OF PART	Part No.	No. Req'd.	NAME OF PART	Part No.	No. Req'd.	NAME OF PART
1	1	Body	15	4	Stuffing Box Gland Stud Nut	26	8	Ram Clip
2	Varies	Body Flange Stud (Not Shown)	16	4	Stuffing Box Gland Jam Nut	27	16	Ram Clip Cap Screw
3	Varies	Body Flange Stud Nut (Not Shown)	17	2 Sets	Stuffing Box Packing (Chevron)	28	2	Operating Screw with Nut
4	Varies	Body End Cover Stud	18	2	Stuffing Box Bronze Packing Ring —Bottom	29	2 R.H. & 2 L.H.	Bronze Half Nut
5	Varies	Body End Cover Stud Nut	19	2	Stuffing Box Bronze Packing Ring —Top	30	2	Sprocket
6	2	Side Plug	20	2	Flange (Not Shown)	31	1	Sprocket Chain (length varies)
7	2	End Bearing Plug	21	1 Set	Ram Block Holder	32	1	Sprocket Chain Tightener
8	1	End Center Plug	22	1 Set	Ram Block (Pipe or Complete Shut-Off)	33	1	Screw with Ratchet Washer for Chain Tightener
9	5	Copper Gasket for Side and End Plug	23	4	Ram Block Retracting Screw	34	1	Screw with Plain Washer for Chain Tightener
10	2	Washout Plug	24	1 Set	Ram Rubber (Pipe or Complete Shut-Off)	35	1	Sprocket Chain Guard (Not Shown)
11	1	End Cover	25	Varies	Ram Rubber Retaining Screw	36	2	Cap Screw with Washer for Chain Guard (Not Shown)
12	1	Hydraulic Packing for End Cover (Earlier Gates use Metal Gasket)						
13	2	Stuffing Box Gland						
14	4	Stuffing Box Gland Stud						

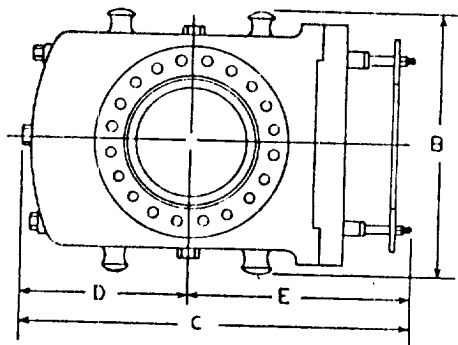


Fig. 85

Dimensional Plan—Shaffer Type 45 Mechanical Single Control Gate

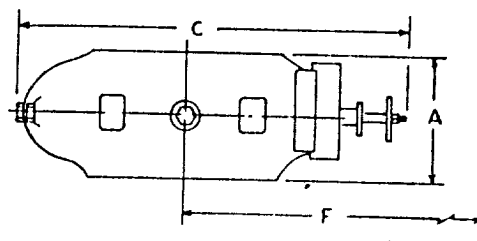


Fig. 86

Dimensional Elevation—Shaffer Type 45 Mechanical Single Control Gate

DIMENSIONAL AND ENGINEERING DATA ON SHAFFER TYPE 45 MECHANICAL SINGLE CONTROL GATES

Size	Max. Service Pressure Rating, psi	Test Pressure, psi	Vertical Bore	Approx. Weight, Pounds	Ram Size	A Height	B Width	C Length	D Center To Rear	E Center To Front	F Max. Distance Needed To Change Rams
6"	3,000	6,000	7 1/4"	1,500	C.S.O. Thru 5" O.D.	14"	27 1/2"	34"	13 1/2"	20 1/2"	41 1/2"
8"	3,000	6,000	9"	2,050	C.S.O. Thru 7" O.D.	15 1/4"	29 1/2"	40"	16 1/4"	23 1/4"	49 1/2"
10"	3,000	6,000	11"	2,580	C.S.O. Thru 8 1/2"						
12"	3,000	6,000	12 1/4"	3,345	C.S.O. Thru 10"						
16"	2,000	3,000	16 1/4"	4,200	C.S.O. Thru 13"						

EXHIBIT "E"

McCLELLAN OIL CORPORATION

Arco Federal, Well No. 1

Cable Tool Rig BOP Spec.

Shaffer Control Gate similar to Henderlitter

APPLICATION FOR DRILLING

McCLELLAN OIL CORPORATION
Arco Federal, Well No. 1
330' FSL & 330' FEL, Sec. 34-T19S-R27E
Chaves County, New Mexico
Lease No.: NM-31951
(Development Well)

In conjunction with Form 3160-3, Application for Permit to Drill subject well, McClellan Oil Corporation submits the following items of pertinent information in accordance with BLM requirements:

1. The geologic surface formation is recent Permian with quaternary alluvium and other surficial deposits.
2. The estimated tops of geologic markers are as follows:

Yates	487'
Seven-Rivers	755'
Queen	1350'
Grayburg	1645'
Total Depth	1900'
3. The estimated depths at which water, oil or gas formations are anticipated to encountered:

Water: Surface water between 100' to 300'.

Oil: Seven Rivers below 755', Queen below 1350' and Grayburg below 1645'.

Gas: None.
4. Proposed Casing Program: See Form 3160-3.
5. Pressure Control Equipment: See Form 3160-3 and Exhibit "E".
6. Mud Program: Cable tool drilling will be used, see Form 3160-3.
7. Auxiliary Equipment: A 10" Henderlitter 3000 psi rotating head.
8. Testing, Logging, and Coring Program:

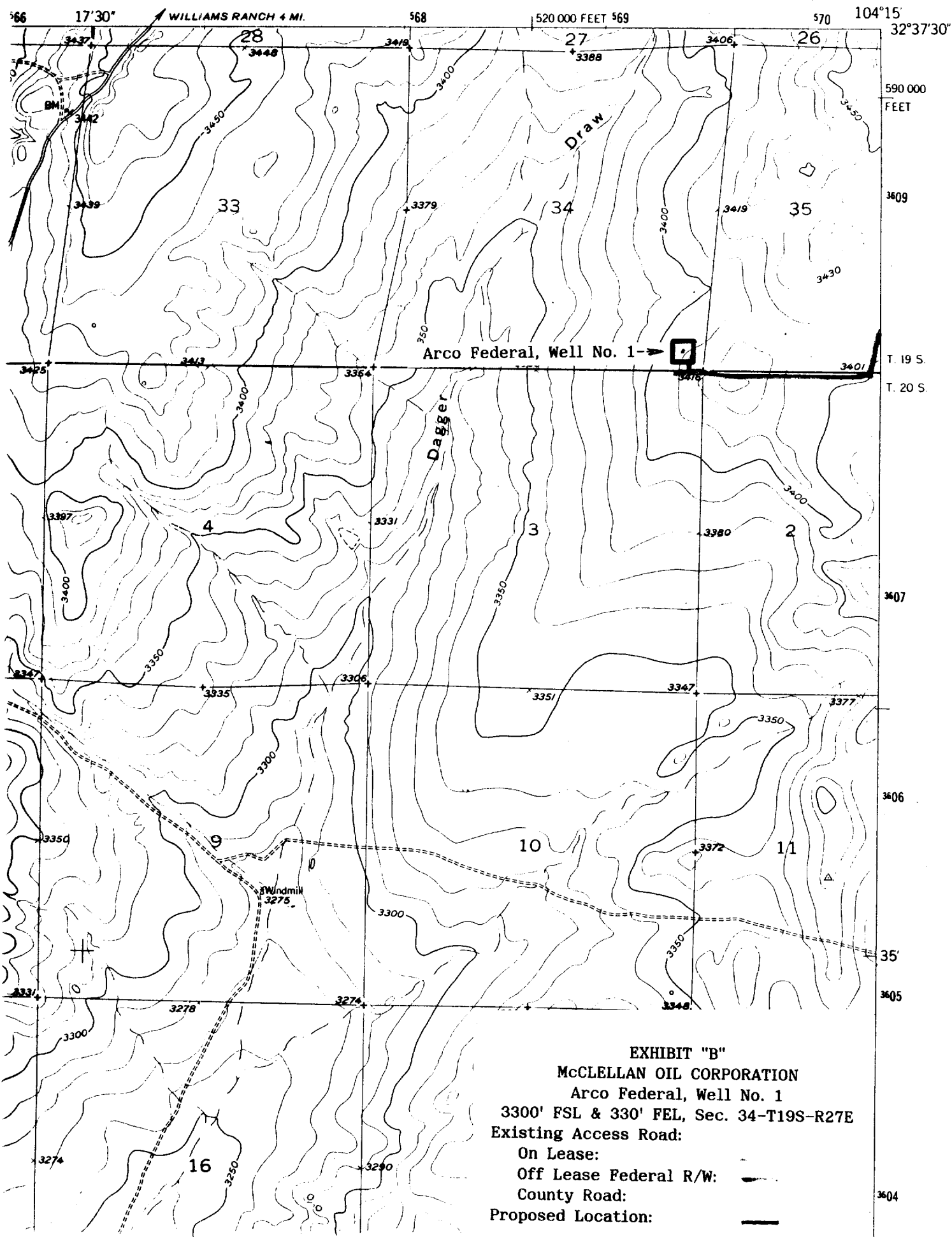
Drill Stem Tests: None.

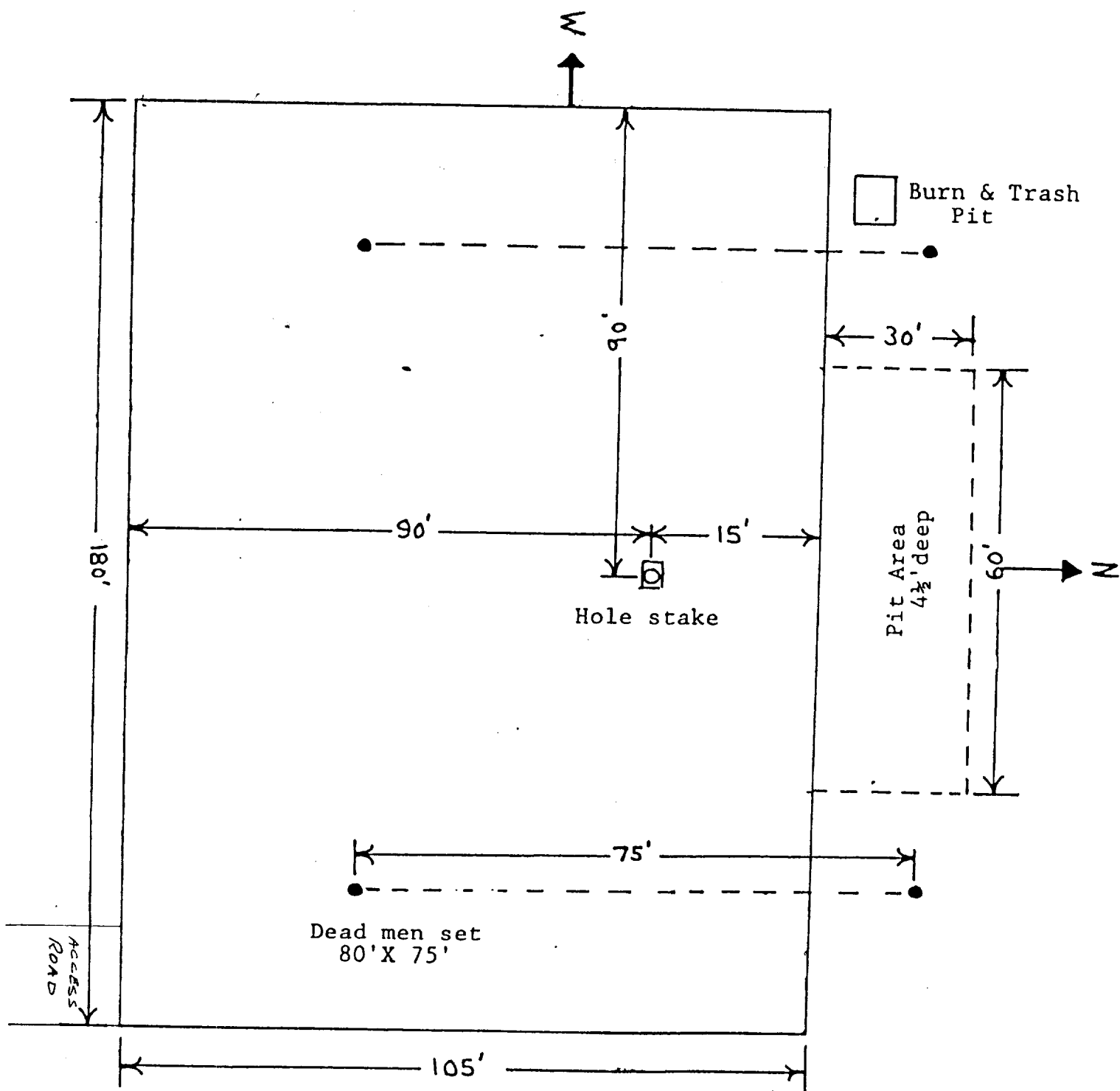
Logging: From surface casing to T.D.: CNL-LDT and DLL Gamma Ray/Neutron.

Coring: None planned.
9. No abnormal pressures or temperatures are anticipated.
10. Anticipated starting date: February 26, 1989.
Anticipated completion of drilling operations: Approximately 14 days.

LAKE MC MILLAN SOUTH QUADRANGLE
NEW MICO-EDDY CO.
7.5 MINUTE SERIES (TOPOGRAPHIC)

5144
101 C11
1:62500





CABLE TOOL LOCATION PLAT

EXHIBIT "D"
 McCLELLAN OIL CORPORATION
 Arco Federal, Well No. 1
 Rig Layout