

Submit to Appropriate  
District Office  
State Lease - 6 copies  
Fee Lease - 5 copies

State of New Mexico  
Energy, Minerals and Natural Resources Department

Form C-101  
Revised 1-1-89

745  
647  
572d  
Opr.

DISTRICT I  
P.O. Box 1980, Hobbs, NM 88240

DISTRICT II  
P.O. Drawer DD, Artesia, NM 88210

DISTRICT III  
1000 Rio Brazos Rd., Aztec, NM 87410

OIL CONSERVATION DIVISION

RECEIVED  
P.O. Box 2088  
Santa Fe, New Mexico 87504-2088

JAN 26 '89

API NO. (assigned by OCD on New Wells)  
30-215-26058

5. Indicate Type of Lease  
STATE ☒ FEE ☐

6. State Oil & Gas Lease No.  
LG-0465

7. Lease Name or Unit Agreement Name  
Mary Wolf State

8. Well No.

9. Pool name or Wildcat  
☒ West Millman-Grayburg

APPLICATION FOR PERMIT TO DRILL, DEEPEN, OR PLUG BACK

1a. Type of Work:  
DRILL ☒ RE-ENTER ☐ DEEPEN ☐ PLUG BACK ☐

b. Type of Well:  
OIL WELL ☒ GAS WELL ☐ OTHER ☐  
SINGLE ZONE ☐ MULTIPLE ZONE ☐

2. Name of Operator  
Morexco, Inc.

3. Address of Operator  
P. O. Box 481, Artesia, NM 88210

4. Well Location  
Unit Letter N : 330 Feet From The South Line and 1650 Feet From The West Line  
Section 12 Township 19S Range 27E NMPM Eddy County

10. Proposed Depth  
2500'

11. Formation

12. Rotary or C.T.  
Rotary

13. Elevations (Show whether DF, RT, GR, etc.)  
3470'

14. Kind & Status Plug. Bond  
Statewide

15. Drilling Contractor  
United Drilling

16. Approx. Date Work will start  
1-27-89

17. PROPOSED CASING AND CEMENT PROGRAM

SIZE OF HOLE	SIZE OF CASING	WEIGHT PER FOOT	SETTING DEPTH	SACKS OF CEMENT	EST. TOP
12 1/4"	8 5/8"	23#	310'	250 sxs.	
7 7/8"	5 1/2"	10.5-15.5#	2500'	600 sxs.	

Plan to spud test well on or before January 27, 1989 with a 12 1/4" bit. Set 310' of 8 5/8" casing with 250 sxs. Drill out with a 7 7/8" bit with 10# brine to a depth of 2500' or less. If commercial shows are present, 5 1/2" casing will be set with 600 sxs. and circulated to surface. If hole is dry, proper plugs will be set as directed by the N.M.O.C.D.

POST ID-1  
PL & API  
1-27-89

APPROVED FOR 180 DAYS  
FILED 7/26/89  
UNLESS CANCELLED UNDERWAY

IN ABOVE SPACE DESCRIBE PROPOSED PROGRAM: IF PROPOSAL IS TO DEEPEN OR PLUG BACK, GIVE DATA ON PRESENT PRODUCTIVE ZONE AND PROPOSED NEW PRODUCTIVE ZONE. GIVE BLOWOUT PREVENTER PROGRAM, IF ANY.

I hereby certify that the information above is true and complete to the best of my knowledge and belief.

SIGNATURE Rebecca Dickson-Olson TITLE Agent DATE 1-25-89

TYPE OR PRINT NAME TELEPHONE NO.

(This space for State Use)

Original Signed By  
Mike Williams

JAN 26 1989

APPROVED BY TITLE DATE

CONDITIONS OF APPROVAL, IF ANY:

None - N.M.O.C.D. in sufficient

896 casing

N MEXICO OIL CONSERVATION COMMISS. N  
WELL LOCATION AND ACREAGE DEDICATION PLAT

Form C-102  
Supersedes C-128  
Effective 1-1-65

All distances must be from the outer boundaries of the Section.

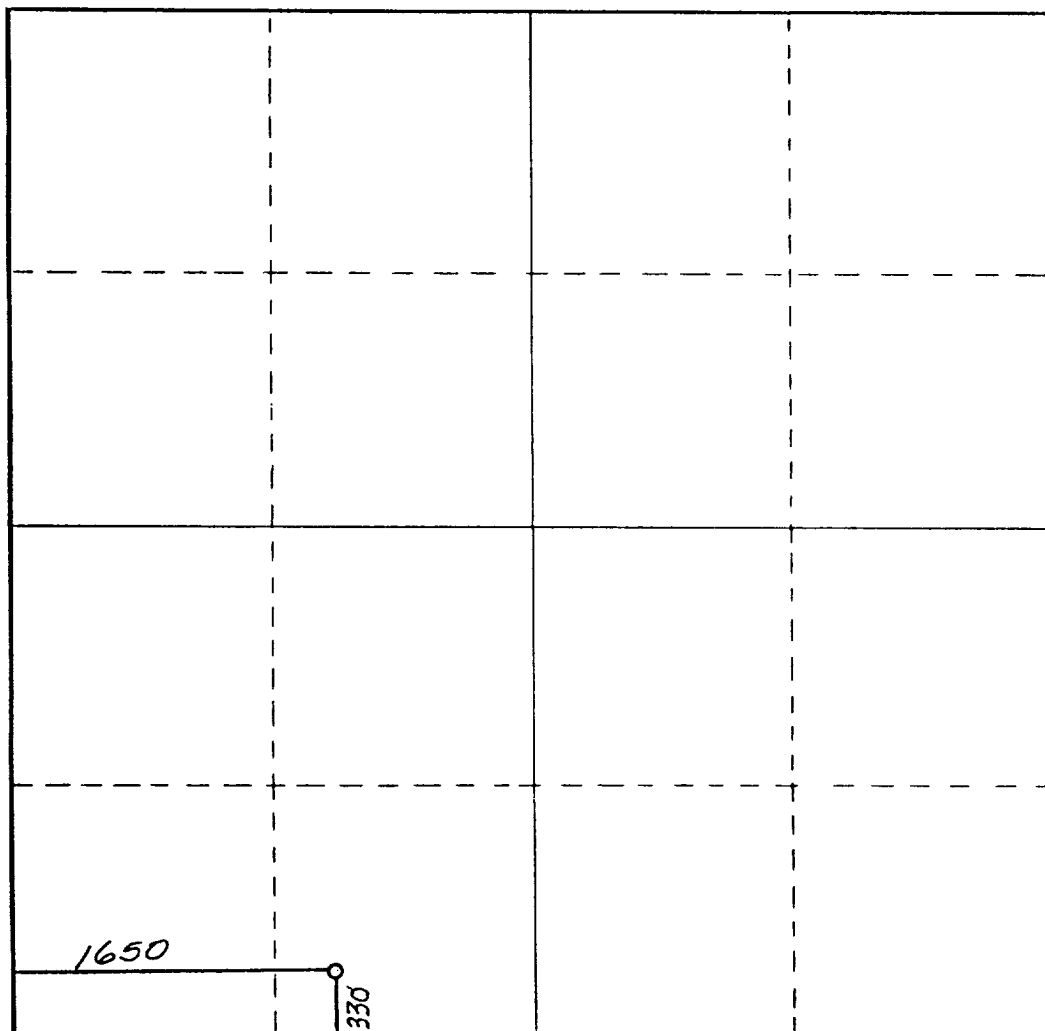
Operator <b>MOREXCO, INC.</b>			Lease <b>Mary Wolf State</b>		Well No. <b>3</b>
Unit Letter <b>N</b>	Section <b>12</b>	Township <b>19 South</b>	Range <b>27 East</b>	County <b>Eddy County, N.M.</b>	
Actual Footage Location of Well: <b>330</b> feet from the <b>South</b> line and <b>1650</b> feet from the <b>West</b> line					
Ground Level Elev. <b>3470.</b>	Producing Formation		Pool <i>W. Mullman Grayburg</i>	Dedicated Acreage: <b>40</b> Acres	

1. Outline the acreage dedicated to the subject well by colored pencil or hatchure marks on the plat below.
2. If more than one lease is dedicated to the well, outline each and identify the ownership thereof (both as to working interest and royalty).
3. If more than one lease of different ownership is dedicated to the well, have the interests of all owners been consolidated by communitization, unitization, force-pooling, etc?

☐ Yes ☒ No If answer is "yes," type of consolidation \_\_\_\_\_

If answer is "no," list the owners and tract descriptions which have actually been consolidated. (Use reverse side of this form if necessary.) \_\_\_\_\_

No allowable will be assigned to the well until all interests have been consolidated (by communitization, unitization, forced-pooling, or otherwise) or until a non-standard unit, eliminating such interests, has been approved by the Commission.



**CERTIFICATION**

I hereby certify that the information contained herein is true and complete to the best of my knowledge and belief.

*Rebecca Dickson-Olson*

Name

**Rebecca Dickson-Olson**

Position

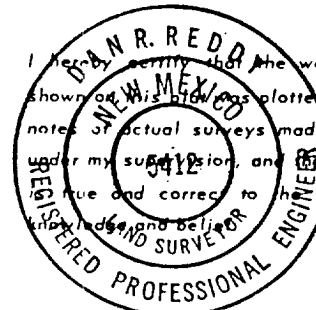
**Agent**

Company

**Morexco, Inc.**

Date

**1-25-89**



Date Surveyed

**January 25, 1989**

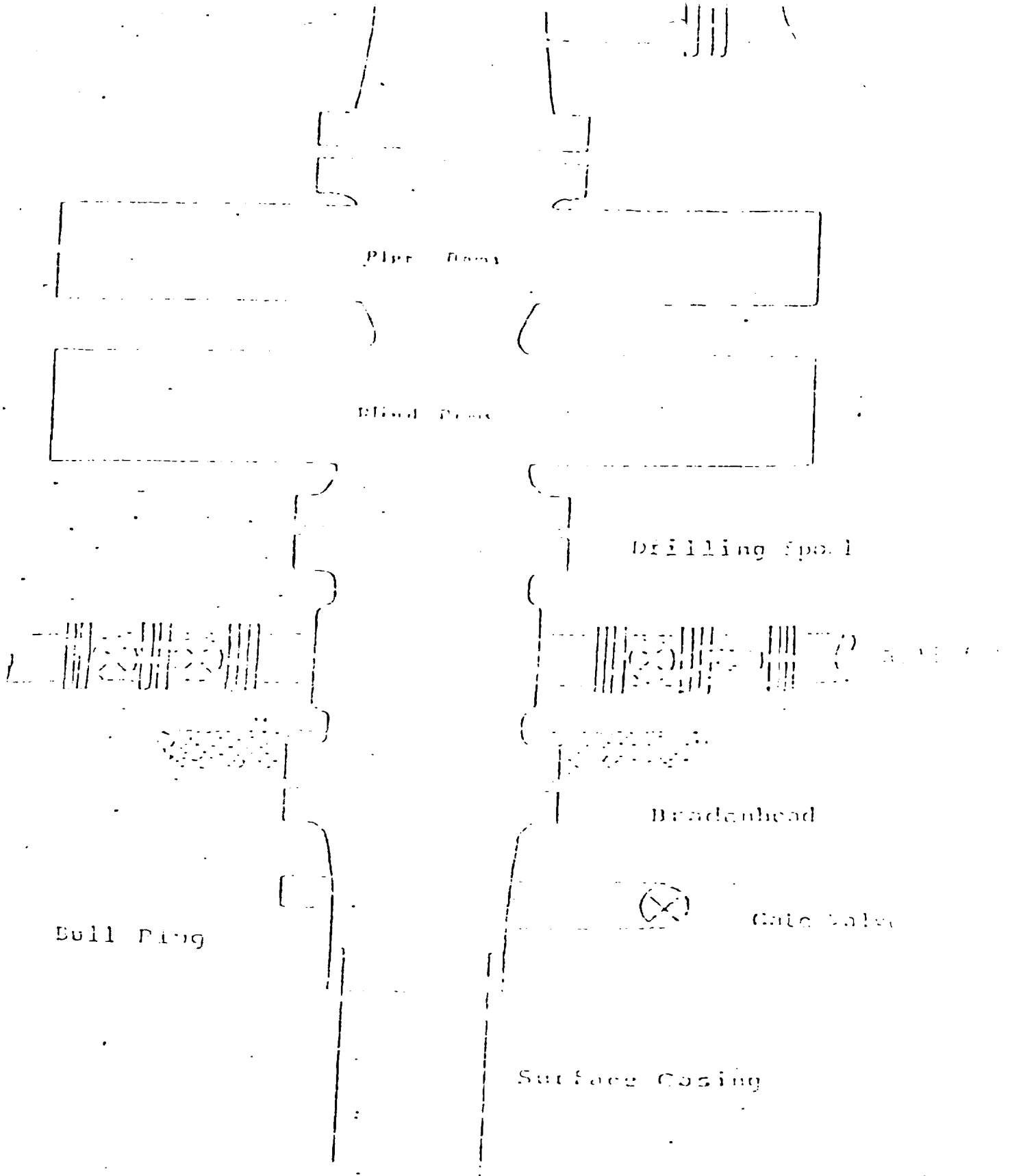
Registered Professional Engineer  
and/or Land Surveyor

*Dan R. Reddy*

Certificate No.

**NM PE&LS NO. 5412**





Series 900 Double Gate BOP, rated  
at 3000 psi Working Pressure

BLOWOUT PREVENTER ARRANGEMENT