

Submit to Appropriate
District Office
State 1 - use - 6 copies
Fee Lease - 5 copies

State of New Mexico
Energy, Minerals and Natural Resources Department

Form C-101
Revised 1-1-89

4/56
BLM
St Ad.
Opr.

DISTRICT I
P.O. Box 1980, Hobbs, NM 88240

DISTRICT II
P.O. Drawer DD, Artesia, NM 88210

DISTRICT III
1000 Rio Brazos Rd., Aztec, NM 87410

OIL CONSERVATION DIVISION

P.O. Box 2088
Santa Fe, New Mexico 87504-2088
JAN 26 '89

O. C. D.
ARTESIA OFFICE

API NO. (assigned by OCD on New Wells)
30-015-26059

5. Indicate Type of Lease
STATE ☒ FEE ☐

6. State Oil & Gas Lease No.
LG-0465

7. Lease Name or Unit Agreement Name

Mary Wolf State

8. Well No.

4

9. Pool name or Wildcat

W. Millman-Grayburg

APPLICATION FOR PERMIT TO DRILL, DEEPEN, OR PLUG BACK

1a. Type of Work:

DRILL ☒ RE-ENTER ☐ DEEPEN ☐ PLUG BACK ☐

b. Type of Well:

OIL WELL ☒ GAS WELL ☐ OTHER ☐
SINGLE ZONE ☐ MULTIPLE ZONE ☐

2. Name of Operator

Morexco, Inc.

3. Address of Operator

P. O. Box 481, Artesia, NM 88210

4. Well Location

Unit Letter N : 990 Feet From The South Line and 1650 Feet From The West Line

Section 12 Township 19S Range 27E NMPM Eddy County

10. Proposed Depth

2500'

11. Formation

12. Rotary or C.T.

Rotary

13. Elevations (Show whether DF, RT, GR, etc.)

3475'

14. Kind & Status Plug Bond

Statewide

15. Drilling Contractor

United Drilling

16. Approx. Date Work will start

1-27-89

17.

PROPOSED CASING AND CEMENT PROGRAM

SIZE OF HOLE	SIZE OF CASING	WEIGHT PER FOOT	SETTING DEPTH	SACKS OF CEMENT	EST. TOP
12 1/4"	8 5/8"	23#	310'	250 sxs.	
7 7/8"	5 1/2"	10.5-15.5#	2500'	600 sxs.	

Plan to spud well on or before January 27, 1989 with a 12 1/4" bit. Set 310' of 8 5/8" casing with 250 sxs. Drill out with a 7 7/8" bit to a depth of 2500' or less. If commercial shows are present, 5 1/2" casing will be set with 600 sxs. and circulated to surface. If dry hole, proper plugs will be set as directed by the N. M. O. C. D.

POST ID-1
NL&API
1-27-89

180 DAYS
PERMIT EXPIRES 7/26/89
UNLESS DRILLING UNDERWAY

IN ABOVE SPACE DESCRIBE PROPOSED PROGRAM: IF PROPOSAL IS TO DEEPEN OR PLUG BACK, GIVE DATA ON PRESENT PRODUCTIVE ZONE AND PROPOSED NEW PRODUCTIVE ZONE. GIVE BLOWOUT PREVENTER PROGRAM, IF ANY.

I hereby certify that the information above is true and complete to the best of my knowledge and belief.

SIGNATURE Rebecca Dickson Dixon TITLE Agent DATE 1-25-89

TYPE OR PRINT NAME TELEPHONE NO.

(This space for State Use)

Original Signed By
Mike Williams

APPROVED BY TITLE DATE

CONDITIONS OF APPROVAL, IF ANY:

NAME OF APPROVING OFFICIAL

DATE

8/5/89

JAN 26 1989

**N MEXICO OIL CONSERVATION COMMISSION
WELL LOCATION AND ACREAGE DEDICATION PLAT**

Form C-102
Supersedes C-128
Effective 1-1-65

All distances must be from the outer boundaries of the Section.

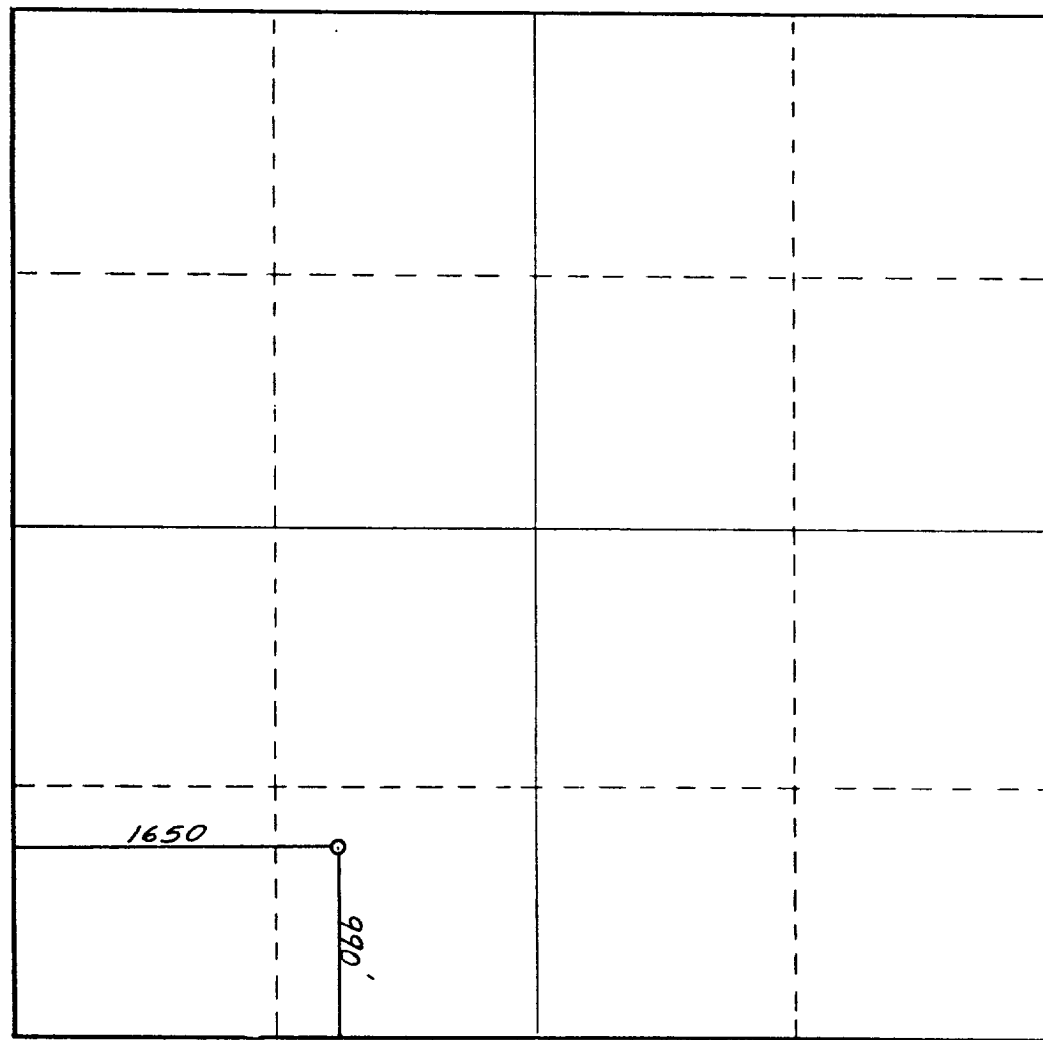
Operator MOREXCO, INC.			Lease Mary Wolf State		Well No. 4
Unit Letter N	Section 12	Township 19 South	Range 27 East	County Eddy County, N.M.	
Actual Footage Location of Well: 990 feet from the South line and 1650 feet from the West line					
Ground Level Elev. 3475.	Producing Formation		Pool <i>W. Dullman Grayburg</i>	Dedicated Acreage: 40 Acres	

1. Outline the acreage dedicated to the subject well by colored pencil or hachure marks on the plat below.
2. If more than one lease is dedicated to the well, outline each and identify the ownership thereof (both as to working interest and royalty).
3. If more than one lease of different ownership is dedicated to the well, have the interests of all owners been consolidated by communitization, unitization, force-pooling, etc?

☐ Yes ☒ No If answer is "yes," type of consolidation _____

If answer is "no," list the owners and tract descriptions which have actually been consolidated. (Use reverse side of this form if necessary.) _____

No allowable will be assigned to the well until all interests have been consolidated (by communitization, unitization, forced-pooling, or otherwise) or until a non-standard unit, eliminating such interests, has been approved by the Commission.



CERTIFICATION

I hereby certify that the information contained herein is true and complete to the best of my knowledge and belief.

Rebecca Dickson-Olson

Name

Rebecca Dickson-Olson

Position

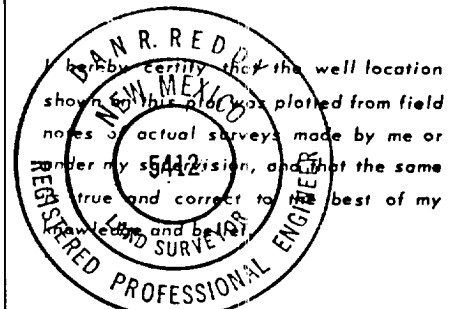
Agent

Company

Morexco, Inc.

Date

1-25-89



Date Surveyed

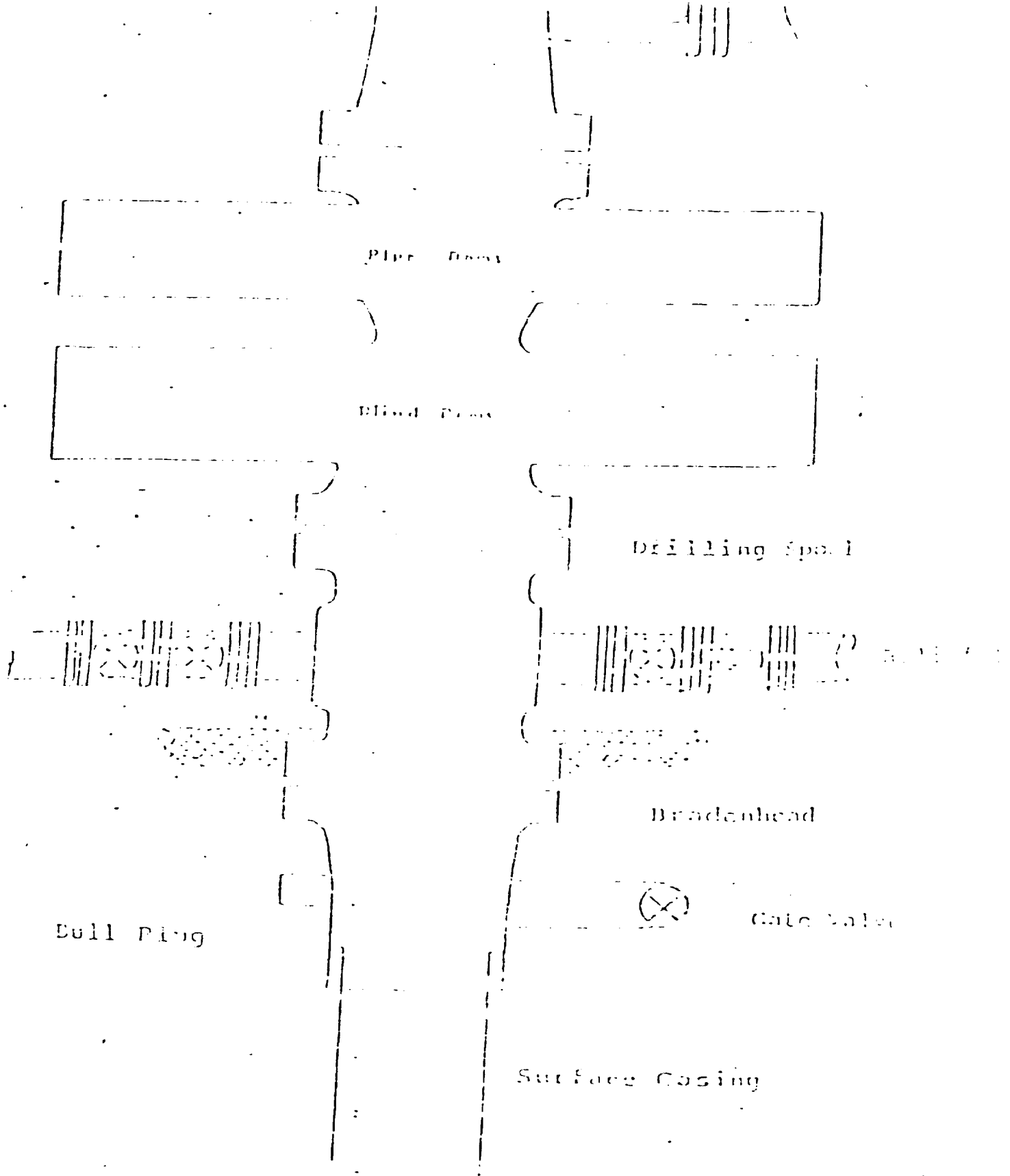
January 25, 1989

Registered Professional Engineer and/or Land Surveyor

Dan R. Reddy

Certificate No.

NM PE&LS NO. 5412



Series 900 Double Gate BOP, rated
at 3000 psi Working Pressure

BLOWOUT PREVENTER ARRANGEMENT