

UNITED STATES
DEPARTMENT OF THE INTERIOR
BUREAU OF LAND MANAGEMENT

SUBMIT IN _____ LOCATE _____
(See other instructions on back of form)

Form approved.
Budget Bureau No. 1004-0137
Expires August 31, 1985

WELL COMPLETION OR RECOMPLETION REPORT AND LOG *

1a. TYPE OF WELL: OIL WELL ☒ GAS WELL ☐ DRY ☐ Other ☐

b. TYPE OF COMPLETION: NEW WELL ☒ WORK OVER ☐ DEEP EN ☐ PLUG BACK ☐ DIFF. REVER. ☐ Other ☐

2. NAME OF OPERATOR
Meridian Oil Inc.

3. ADDRESS OF OPERATOR
21 Desta Drive, Midland, Texas 79705

4. LOCATION OF WELL (Report location clearly and in accordance with any State requirements)
At surface Unit C: 990' FNL & 2310' FWL, Sec. 35, T19S, R29E

At top prod. interval reported below

At total depth

14. PERMIT NO. _____ DATE ISSUED _____
Amended 1/03/89

15. DATE SPUDDED 4/13/89 16. DATE T.D. REACHED 4/22/89 17. DATE COMPL. (Ready to prod.) 6/16/89 18. ELEVATIONS (DF, RKB, RT, GR, ETC.)* 3315' GR 19. ELEV. CASINGHEAD 3315'

20. TOTAL DEPTH, MD & TVD 4550' 21. PLUG. BACK T.D., MD & TVD 4046' 22. IF MULTIPLE COMPL., HOW MANY* N.A. 23. INTERVALS DRILLED BY _____ ROTARY TOOLS X CABLE TOOLS _____

24. PRODUCING INTERVAL(S), OF THIS COMPLETION—TOP, BOTTOM, NAME (MD AND TVD)*
4259' - 64' } Delaware
3949' - 74' }
25. WAS DIRECTIONAL SURVEY MADE No

26. TYPE ELECTRIC AND OTHER LOGS RUN DLL/M-SFL, CNL/LDT 27. WAS WELL CORED No

CASING RECORD (Report all strings set in well)					
CASING SIZE	WEIGHT, LB./FT.	DEPTH SET (MD)	HOLE SIZE	CEMENTING RECORD	AMOUNT PULLED
13 3/8"	48	372'	17 1/2"	725 sx C1. "C" 1" & R-Mix	to surf.
8 5/8"	28, 24	3200'	12 1/4"	2700 sx C1. "C" circ'd SJS	
5 1/2"	14, 15.5	4550'	7 7/8"	540 sx C1. "C"	

LINER RECORD					TUBING RECORD		
SIZE	TOP (MD)	BOTTOM (MD)	SACKS CEMENT*	SCREEN (MD)	SIZE	DEPTH SET (MD)	PACKER SET (MD)
					2 3/8"	3863'	3863'

31. PERFORATION RECORD (Interval, size and number)			32. ACID, SHOT, FRACTURE, CEMENT SQUEEZE, ETC.	
4202' - 39'	1 JSPF,	35 Holes	DEPTH INTERVAL (MD)	AMOUNT AND KIND OF MATERIAL USED
4259' - 64'	4 JSPF,	22 Holes	See Attachment	
3949' - 74'	2 JSPF,	51 Holes		

33.* PRODUCTION							
DATE FIRST PRODUCTION 6/16/89		PRODUCTION METHOD (Flowing, gas lift, pumping—size and type of pump) Flowing				WELL STATUS (Producing or shut-in) Shut-In	
DATE OF TEST 6/21/89	HOURS TESTED 24	CHOKE SIZE 16/64	PROD'N. FOR TEST PERIOD →	OIL—BSL. 289	GAS—MCF. 169	WATER—BSL. 82	GAS-OIL RATIO 584.8
FLOW. TUBING PRBS. 390	CASING PRESSURE 500	CALCULATED 24-HOUR RATE →	OIL—BSL.	GAS—MCF.	WATER—BSL.	OIL GRAVITY-API (CORR.) 39.8	

34. DISPOSITION OF GAS (Sold, used for fuel, vented, etc.) To Be Sold TEST WITNESSED BY Sid Frymire

35. LIST OF ATTACHMENTS C-104, C-102, Inclination Report, Temperature Survey, Logs SJS

36. I hereby certify that the foregoing and attached information is complete and correct as determined from all available records
SIGNED Robert L. Bradshaw TITLE Sr. Staff Env./Reg. Specialist DATE 6/27/89

*(See Instructions and Spaces for Additional Data on Reverse Side)

37. SUMMARY OF POROUS ZONES: (Show all important zones of porosity and contents thereof; cored intervals; and all drill-stem, tests, including depth interval tested, cushion used, flowing and shut-in pressures, and recoveries);	38. GEOLOGIC MARKERS				
FORMATION	TOP	BOTTOM	DESCRIPTION, CONTENTS, ETC.	NAME	TOP MEAS. DEPTH TRUE VERT. DEPTH
				Yates Delaware	1492' 3614'

47. Acid, Shot, Fracture, Cement Squeeze, Etc.

<u>Depth Interval</u>	<u>Amount and Kind of Material Used</u>
4202' - 4239'	Acidize w/ 3000 gals. 7 1/2% HCl w/ 70 RCNBS Frac w/ 40 M gals. 65 Quality N ₂ Foam & 61 M # 12-20 Ottawa Sand Cmt. Retainer @ 4105' - Pumped 2000 gals. Injectrol, 150 sx Cl. "C" w/ 0.5% Halad 322, 150 sx Cl "C" Neat Premium Plus. Squeeze @ 2000 psi. Rec. 27 sx, 9 sx in Csg, 164 sx in form.
4259' - 4264'	Frac. w/ 5850 gals. Mini-Max II B-40 & 11,200 # 16-30 Ottawa Sand
3949' - 3974'	Frac. w/ 25 M gals. 65 Quality N ₂ Foam & 50 # Gel and 53 M # 12-20 Ottawa Sand

4 MEXICO OIL CONSERVATION COMM ON
WELL LOCATION AND ACREAGE DEDICATION PLAT

JUL 07 '89

Form C-162
Supersedes C-1;
Effective 1-1-65

All distances must be from the outer boundaries of the Section

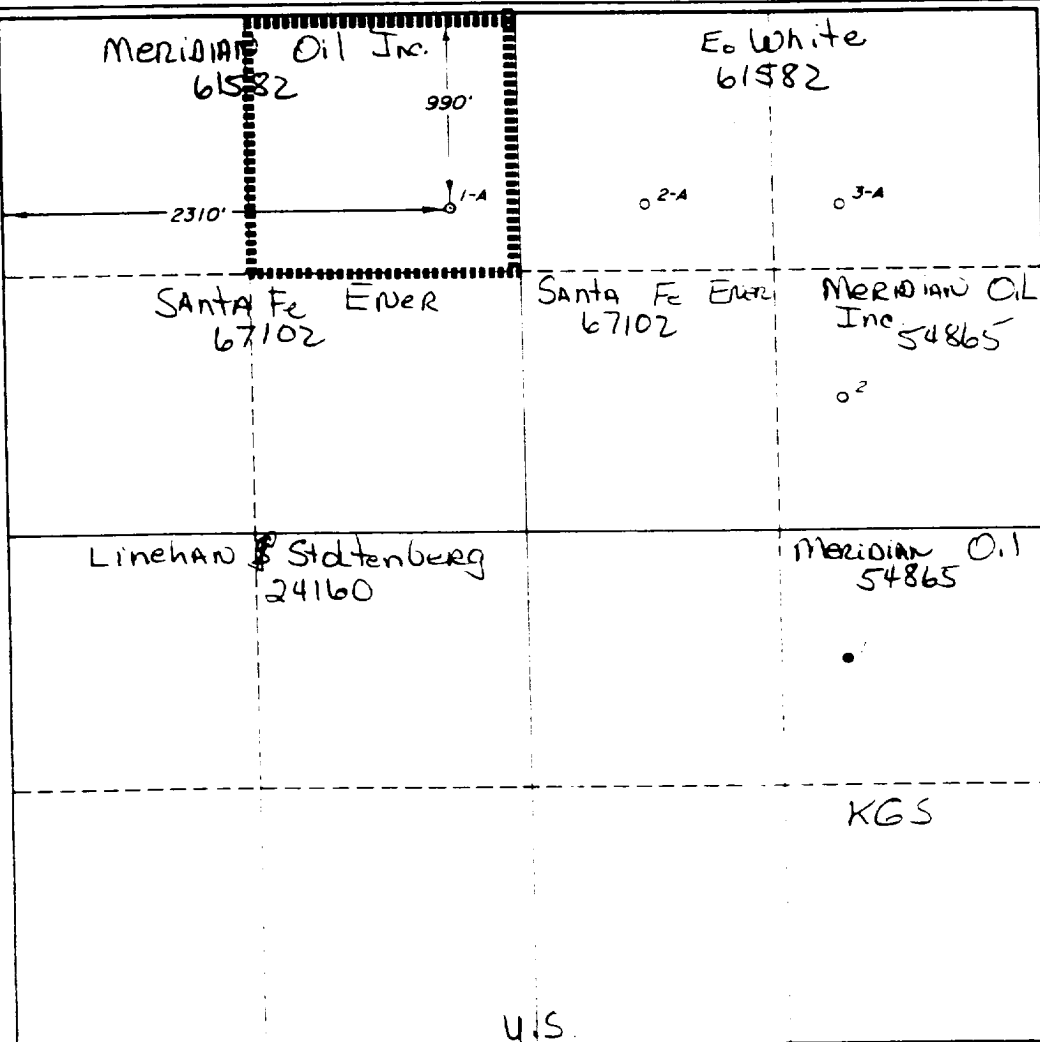
Operator MERIDIAN OIL, INC.			Lease APACHE FEDERAL			O. C. Dwell No. ARTESIA, OFFICE			"A"						
Unit Letter C	Section 35	Township 19-SOUTH	Range 29-EAST	County EDDY											
Actual Footage Location of Well:															
990		feet from the		NORTH		line and		2310		feet from the		WEST		line	
Ground Level Elev. 3315'		Producing Formation Delaware				Pool Parkway				Dedicated Acreage: 40				Acres	

1. Outline the acreage dedicated to the subject well by colored pencil or hatchure marks on the plat below.
2. If more than one lease is dedicated to the well, outline each and identify the ownership thereof (both as to working interest and royalty).
3. If more than one lease of different ownership is dedicated to the well, have the interests of all owners been consolidated by communitization, unitization, force-pooling, etc?

☐ Yes ☐ No If answer is "yes," type of consolidation _____

If answer is "no," list the owners and tract descriptions which have actually been consolidated. (Use reverse side of this form if necessary.) _____

No allowable will be assigned to the well until all interests have been consolidated (by communitization, unitization, forced-pooling, or otherwise) or until a non-standard unit, eliminating such interests, has been approved by the Commission.

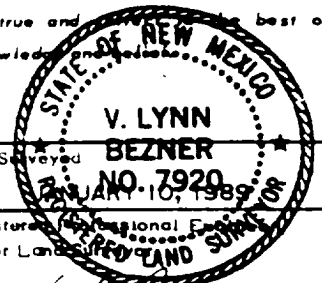


CERTIFICATION

I hereby certify that the information contained herein is true and complete to the best of my knowledge and belief.

Name Marianne Martin
Position Marianne Martin
Operations Tech III
Company Meridian Oil Inc.
Date 1-25-89

I hereby certify that the well location shown on this plat was plotted from field notes of actual surveys made by me or under my supervision, and that the same is true and correct to the best of my knowledge and belief.



Date Surveyed BEZNER
Registered Professional Engineer and/or Land Surveyor
V. Lynn Bezner
Certificate No. 7920

INCLINATION REPORT

E-Gen-89

OPERATOR: Meridian Oil, Inc.
 ADDRESS: 21 Besta Drive
 Midland, Texas 79705

WELL NAME: Leache Federal No. 1-A
 LOCATION: Section 36, T-19-S, R-19-E
 COUNTY/STATE: Eddy County, New Mexico

RECEIVED

JUL 07 '89

RECORD OF INCLINATION

O. C. D.
ARTESIA, OFFICE

MEASURED DEPTH (Feet)	COURSE LENGTH	ANGLE OF INCLINATION (Degrees)	DISPLACEMENT PER HUNDRED FEET (Sine of Angle x 100)	CUMULATIVE DISPLACEMENT (Feet)	ACCUMULATIVE DISPLACEMENT (Feet)
330	330	0.00	0.00	0.00	0.00
446	446	0.25	0.44	0.44	0.44
502	456	1.75	3.06	3.50	3.94
611	509	1.75	3.06	6.56	7.00
1163	552	2.50	4.38	10.94	11.38
1257	94	2.25	3.94	14.90	15.34
1413	156	1.00	1.75	16.65	17.10
1632	219	0.75	1.31	17.96	18.41
1800	186	1.50	2.63	20.59	21.04
2070	370	0.75	1.31	21.90	22.45
2510	440	1.00	1.75	23.65	24.20
2854	344	2.00	3.50	27.15	27.70
3200	346	2.00	3.50	30.65	31.20
3700	500	1.50	2.63	33.28	33.83
4141	441	0.75	1.31	34.59	35.14
4550	409	1.25	2.19	36.78	37.33

Accumulative total displacement at well bore at total depth of 4,550' feet = 118.35 feet.

Inclination measurements were made in - ☐ Tubing ☐ Casing ☐ Open Hole ☒ Drill Pipe.

At no time was the subject well intentionally deviated from the vertical in any manner whatsoever.

INCLINATION DATA CERTIFICATION

I declare that I am authorized to make this certification, that I have personal knowledge of the inclination data and facts placed on this form and that such data and facts are true, correct and complete to the best of my knowledge.

SEAL

M. D. Mosley
 Signature of Authorized Representative

M. D. Mosley, Vice President Drilling Operations
 Name of Person and Title

TOT Drilling Corporation
 Name of Company

Phone: (915) 367-7361 or (915) 563-1948

Subscribed and sworn before me this
 25th Day of April, 1989.

Elizabeth A. Knight
 Notary Public for the State of Texas
 My Commission Expires June 10, 1989