

UNITED STATES DEPARTMENT OF THE INTERIOR BUREAU OF LAND MANAGEMENT

APPLICATION FOR PERMIT TO DRILL, DEEPEN, OR PLUG BACK

1a. TYPE OF WORK

DRILL ☒

DEEPEN ☐

PLUG BACK ☐

b. TYPE OF WELL

OIL WELL ☒

GAS WELL ☐

AMENDED LOCATION

SINGLE ZONE ☐

MULTIPLE ZONE ☐

2. NAME OF OPERATOR

Read & Stevens, Inc.

RECEIVED

3. ADDRESS OF OPERATOR

P. O. Box 1518 Roswell, NM 88202

JUN 02 '89

4. LOCATION OF WELL (Report location clearly and in accordance with any State requirements.)

At surface

330' FNL & 1980' FWL

At proposed prod. zone

O.C.D. ARTESIA OFFICE

same

14. DISTANCE IN MILES AND DIRECTION FROM NEAREST TOWN OR POST OFFICE*

12.5 miles SE of Loco Hills, NM

15. DISTANCE FROM PROPOSED*

LOCATION TO NEAREST PROPERTY OR LEASE LINE, FT. (Also to nearest drlg. unit line, if any)

330'

16. NO. OF ACRES IN LEASE

360

17. NO. OF ACRES ASSIGNED TO THIS WELL

40

18. DISTANCE FROM PROPOSED LOCATION*

TO NEAREST WELL, DRILLING, COMPLETED, OR APPLIED FOR, ON THIS LEASE, FT.

4290'

19. PROPOSED DEPTH

9,200'

20. ROTARY OR CABLE TOOLS

Rotary

21. ELEVATIONS (Show whether DF, RT, GR, etc.)

3723' GL

22. APPROX. DATE WORK WILL START*

June 10, 1989

23.

PROPOSED CASING AND CEMENTING PROGRAM

SIZE OF HOLE	SIZE OF CASING	WEIGHT PER FOOT	SETTING DEPTH	QUANTITY OF CEMENT
17 1/2"	13 3/8"	54#	400'	600 sx "C" circulate to surface
12 1/4"	8 5/8"	24#	2400'	1050 sx "C" " " "
7 7/8"	5 1/2"	17#	9200'	1800 sx "H" Tie back

Mud Program:

0' - 400' Fresh water, native, spud mud
400' - 2400' Saturated brine water
2400' - 9200' Cut brine water

Weight	Visc.	W/L Cont.
8.5 - 9.0	40	N/C
10.0 - 10.2	30 - 32	N/C
9.0 - 9.2	32 - 34	W/L 10 cc

BOP Program: A 3000 psi wp 900 series Shaffer double hydraulic operated BOP will be used and tested daily. See Exhibit "E".

POST ID-1
NH
6-30-89

IN ABOVE SPACE DESCRIBE PROPOSED PROGRAM: If proposal is to deepen or plug back, give data on present productive zone and proposed new productive zone. If proposal is to drill or deepen directionally, give pertinent data on subsurface locations and measured and true vertical depths. Give blowout preventer program, if any.

24.

Agent for:

Read & Stevens, Inc.

May 10, 1989

SIGNED

TITLE

DATE

(This space for Federal or State office use)

PERMIT NO.

APPROVAL DATE

APPROVED BY

TITLE

DATE

CONDITIONS OF APPROVAL, IF ANY:

*See Instructions On Reverse Side

omit to Appropriate
strict Office
Lease - 4 copies
Lease - 3 copies

State of New Mexico
Energy, Minerals and Natural Resources Department

Form C-102
Revised 1-1-89

OIL CONSERVATION DIVISION

P.O. Box 2088
Santa Fe, New Mexico 87504-2088

STRICT I
J. Box 1980, Hobbs, NM 88240

STRICT II
J. Drawer DD, Artesia, NM 88210

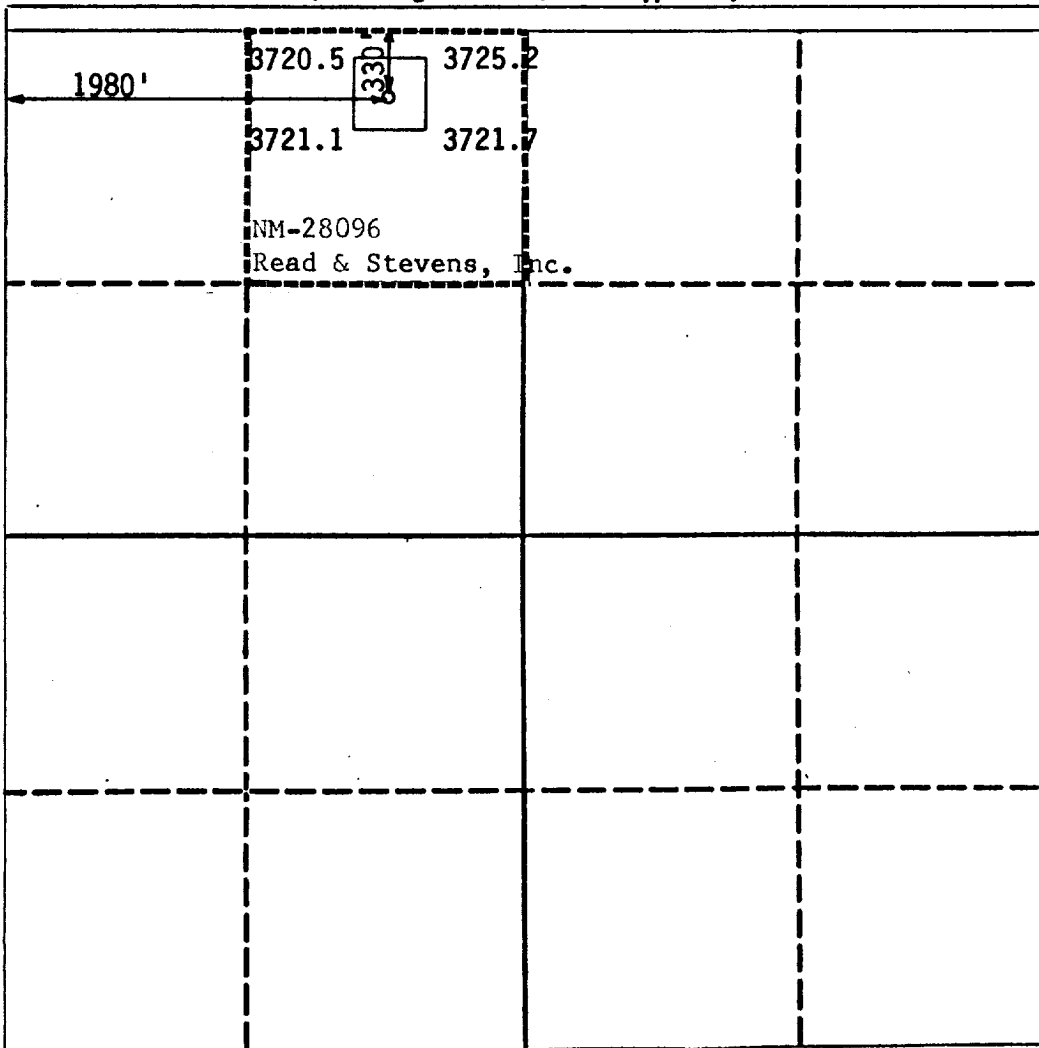
STRICT III
30 Rio Brazos Rd., Aztec, NM 87410

WELL LOCATION AND ACREAGE DEDICATION PLAT

All Distances must be from the outer boundaries of the section

Operator Read & Stevens, Inc.			Lease Jamie Federal		Well No. 1
Section Letter C	Section 14	Township 18 South	Range 31 East	County Eddy	NMPM
Well Footage Location of Well: 330 feet from the North line and 1980 feet from the West line					
Ground level Elev. 3723	Producing Formation Bone Spring	Pool Tamano Bone Spring	Dedicated Acreage: 40 Acres		

1. Outline the acreage dedicated to the subject well by colored pencil or hatchure marks on the plat below.
2. If more than one lease is dedicated to the well, outline each and identify the ownership thereof (both as to working interest and royalty).
3. If more than one lease of different ownership is dedicated to the well, have the interest of all owners been consolidated by communization, unitization, force-pooling, etc.?
☐ Yes ☐ No If answer is "yes" type of consolidation _____
If answer is "no" list the owners and tract descriptions which have actually been consolidated. (Use reverse side of this form if necessary). _____
No allowable will be assigned to the well until all interests have been consolidated (by communization, unitization, forced-pooling, or otherwise) or until a non-standard unit, eliminating such interest, has been approved by the Division.



OPERATOR CERTIFICATION

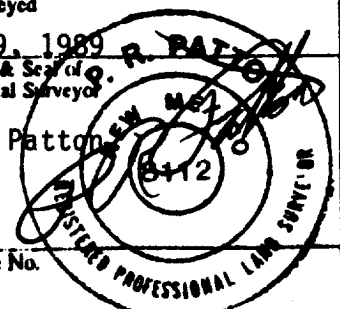
I hereby certify that the information contained herein is true and complete to the best of my knowledge and belief.

Signature
George R. Smith
Printed Name
George R. Smith
Position
Agent for:
Company
Read & Stevens, Inc.
Date
May 16, 1989

SURVEYOR CERTIFICATION

I hereby certify that the well location shown on this plat was plotted from field notes of actual surveys made by me or under my supervision, and that the same is true and correct to the best of my knowledge and belief.

Date Surveyed
May 9, 1989
Signature & Seal of
Professional Surveyor
P.R. Patton
Certificate No.
8112



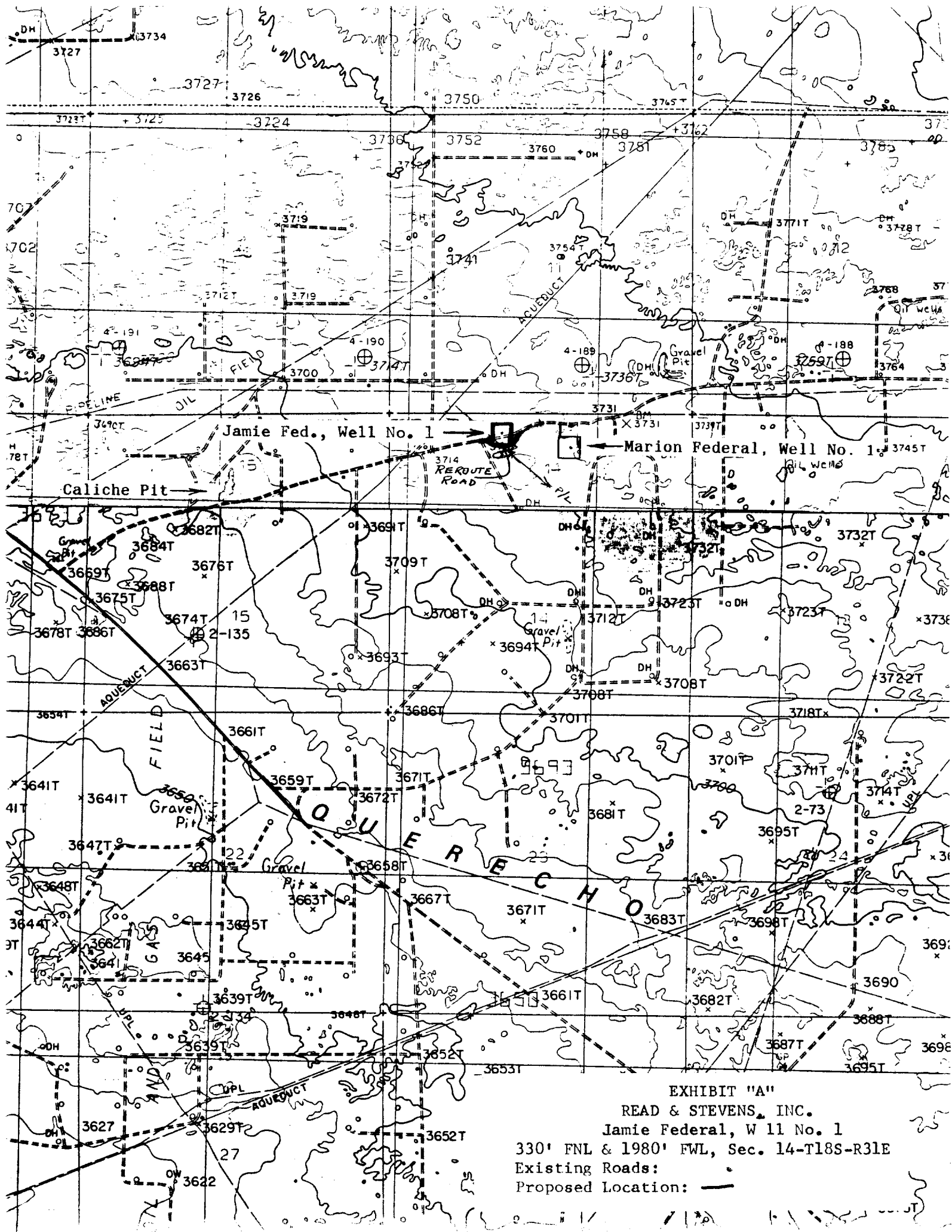


EXHIBIT "A"

READ & STEVENS, INC.

Jamie Federal, Well No. 1

330' FNL & 1980' FWL, Sec. 14-T18S-R31E

Existing Roads:

Proposed Location: —