

ARTESIA REGION  
UNITED STATES  
DEPARTMENT OF THE INTERIOR  
BUREAU OF LAND MANAGEMENT

APPLICATION FOR PERMIT TO DRILL, DEEPEN, OR PLUG BACK

1a. TYPE OF WORK

DRILL ☒

DEEPEN ☐

PLUG BACK ☐

b. TYPE OF WELL

OIL WELL ☒

GAS WELL ☐

OTHER

SINGLE ZONE ☒

MULTIPLE ZONE ☐

2. NAME OF OPERATOR

Siete Oil and Gas Corporation

3. ADDRESS OF OPERATOR

P.O. Box 2523

Roswell, New Mexico 88502

4. LOCATION OF WELL (Report location clearly and in accordance with any State requirements.)

At surface

1980' FNL & 1980' FEL, SW $\frac{1}{4}$ NE $\frac{1}{4}$ , Unit Letter G

At proposed prod. zone Same

MAR 23 '89

14. DISTANCE IN MILES AND DIRECTION FROM NEAREST TOWN OR POST OFFICE\*

17 miles Northeast of Carlsbad, New Mexico

O. C. D.

ARTESIA, OFFICE

15. DISTANCE FROM PROPOSED\*

LOCATION TO NEAREST PROPERTY OR LEASE LINE, FT.  
(Also to nearest drlg. unit line, if any)

1980'

16. NO. OF ACRES IN LEASE

1320

17. NO. OF ACRES ASSIGNED TO THIS WELL

40

18. DISTANCE FROM PROPOSED LOCATION\*

TO NEAREST WELL, DRILLING, COMPLETED, & APPLIED FOR, ON THIS LEASE, FT.

2740'

19. PROPOSED DEPTH

12100'

20. ROTARY OR CABLE TOOLS

Rotary

21. ELEVATIONS (Show whether DF, RT, GR, etc.)

3320' GR

22. APPROX. DATE WORK WILL START\*

ASAP

23.

PROPOSED CASING AND CEMENTING PROGRAM

SIZE OF HOLE	SIZE OF CASING	WEIGHT PER FOOT	SETTING DEPTH	QUANTITY OF CEMENT
17 1/2"	13 3/8"	54.0#	350'	500 sks. <u>circ.</u>
12 1/4"	8 5/8"	24.0#	2500'	1200 sks. <u>circ.</u>
7 7/8"	5 1/2"	* 17.0#	12100'	1500 sks.

Selectively perforate and treat pay zones.

\*Siete will submit amended prod. csq. plan  
& BOE diagram on Sundry Notice.

(SJS)

Attachments:

Survey plat (C-102)  
Supplemental drilling data  
Surface use plan

APPROVAL SUBJECT TO  
GENERAL REQUIREMENTS AND  
SPECIAL STIPULATIONS  
ATTACHED

IN ABOVE SPACE DESCRIBE PROPOSED PROGRAM: If proposal is to deepen or plug back, give data on present productive zone and proposed new productive zone. If proposal is to drill or deepen directionally, give pertinent data on subsurface locations and measured and true vertical depths. Give blowout preventer program, if any.

24.

SIGNED

Cathy O. Batley

TITLE Drilling & Production

DATE 3/17/89

(This space for Federal or State office use)

PERMIT NO.

APPROVAL DATE

APPROVED BY

David Adams

TITLE

CARLSBAD RESOURCE AREA

DATE

3-21-89

CONDITIONS OF APPROVAL, IF ANY:

\*See Instructions On Reverse Side

**NEW MEXICO OIL CONSERVATION COMMISSION  
WELL LOCATION AND ACREAGE DEDICATION PLAT**

Form C-102  
Supersedes C-128  
Effective 1-1-65

All distances must be from the outer boundaries of the Section.

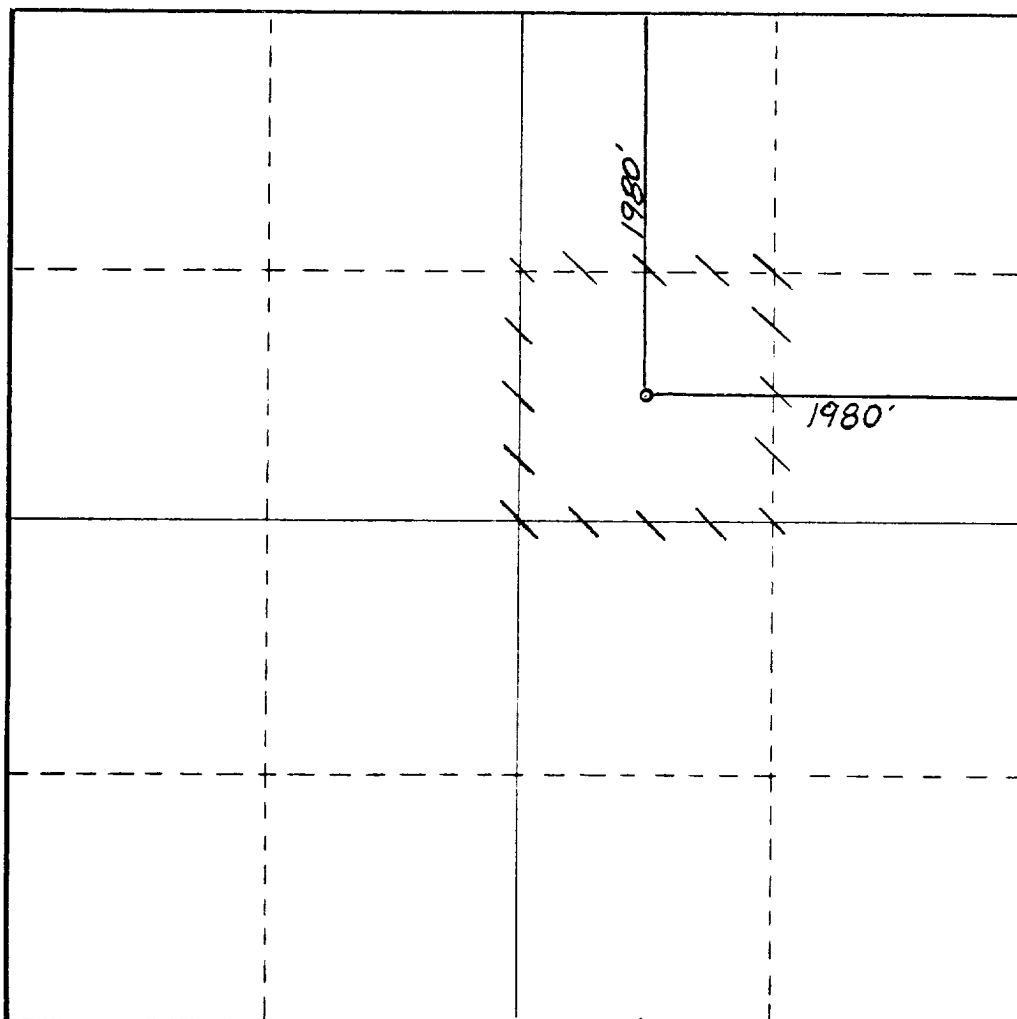
Operator <b>SIETE OIL &amp; GAS CORPORATION</b>			Lease <b>Osage Federal</b>		Well No. <b>8</b>
Unit Letter <b>G</b>	Section <b>34</b>	Township <b>19 South</b>	Range <b>29 East</b>	County <b>Eddy County, N.M.</b>	
Actual Footage Location of Well: <b>1980</b> feet from the <b>North</b> line and <b>1980</b> feet from the <b>East</b> line					
Ground Level Elev. <b>3320.</b>	Producing Formation <b>Strawn</b>		Pool <b>Wildcat STRAWN</b>	Dedicated Acreage: <b>40</b> Acres	

1. Outline the acreage dedicated to the subject well by colored pencil or hatchure marks on the plat below.
2. If more than one lease is dedicated to the well, outline each and identify the ownership thereof (both as to working interest and royalty).
3. If more than one lease of different ownership is dedicated to the well, have the interests of all owners been consolidated by communitization, unitization, force-pooling, etc?

☐ Yes    ☐ No    If answer is "yes," type of consolidation \_\_\_\_\_

If answer is "no," list the owners and tract descriptions which have actually been consolidated. (Use reverse side of this form if necessary.) \_\_\_\_\_

No allowable will be assigned to the well until all interests have been consolidated (by communitization, unitization, forced-pooling, or otherwise) or until a non-standard unit, eliminating such interests, has been approved by the Commission.



**CERTIFICATION**

*I hereby certify that the information contained herein is true and complete to the best of my knowledge and belief.*

Name  
**Harold D. Justice**

Position  
**V.P. Drilling & Production**

Company  
**SIETE OIL & GAS CORPORATION**

Date  
**March 17, 1989**

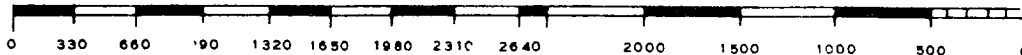
*I hereby certify that the well location shown on this plat was plotted from field notes of actual surveys made by me or under my supervision and that the same is correct to the best of my knowledge and belief.*

Date Surveyed  
**March 15, 1989**

Registered Professional Engineer and/or Land Surveyor

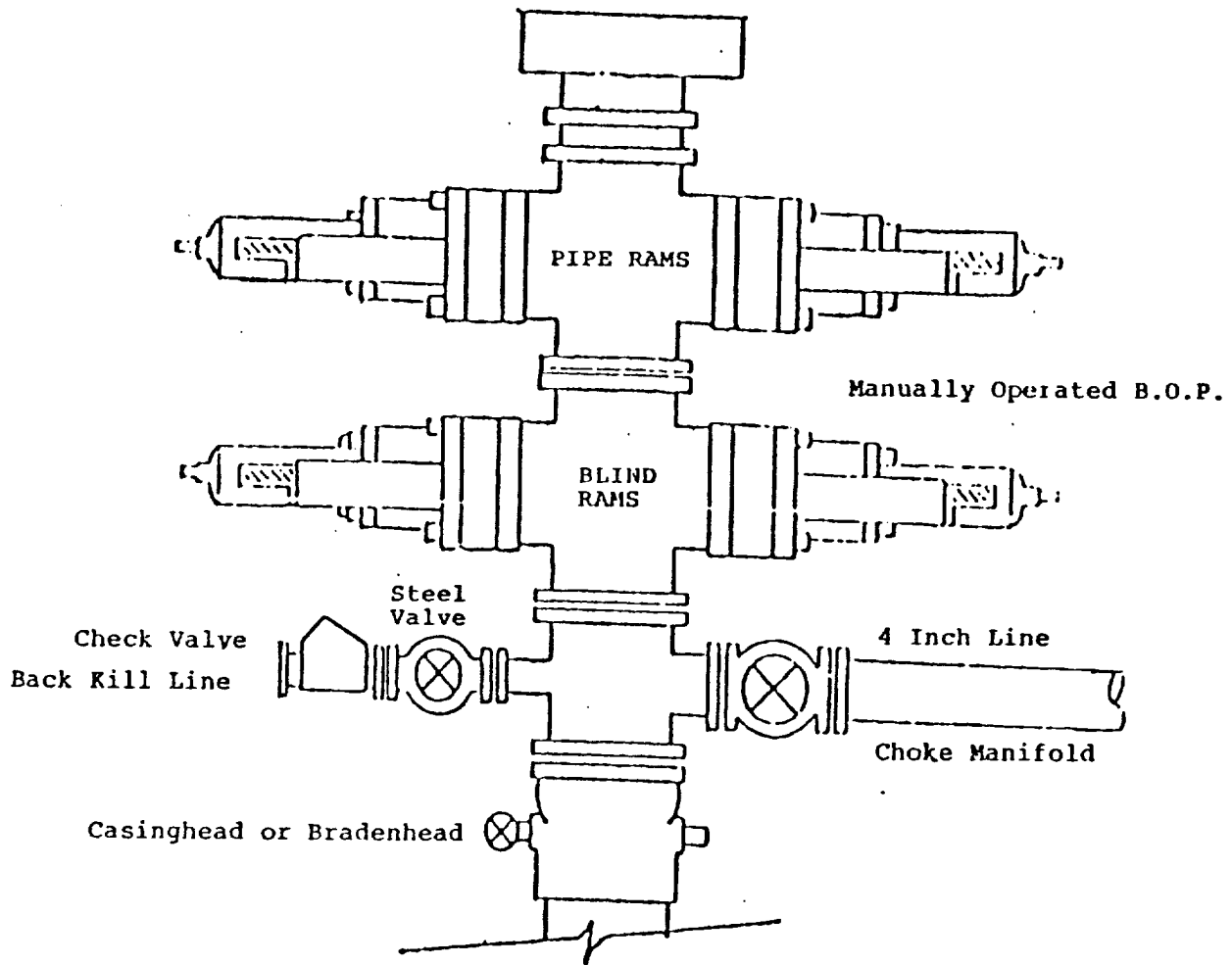
*Dan R. Reddy*

Certificate No.  
**NM PE&LS NO. 5412**



BOP DIAGRAM

RATED 3000#



SUPPLEMENTAL DRILLING DATA  
SIETE OIL AND GAS CORPORATION  
OSAGE FEDERAL NO. 8  
1980' FNL & 1980' FEL  
Section 34: T19S, R29E  
Eddy County, New Mexico  
Lease Number: NM-24160

The following items supplement "Onshore Oil and Gas Order No. 1":

1. The geologic surface is quaternary.
2. The estimated geological marker tops:

B/Salt	1000'
Queen	2500'
Del. Sand	3400'
T/Bone Spring	5700'
T/Wolfcamp	9300'
T/Strawn	10350'

3. Estimated depths to water, oil or gas:

Water: Approximately 220'  
Oil or Gas: 10500' - 10600'

4. Proposed casing program:

<u>Size</u>	<u>Interval</u>	<u>Weight</u>	<u>Grade</u>	<u>Joint</u>	<u>New or Used</u>
13 3/8	0 - 350'	54.5#	J-55	ST&C	New
8 5/8	0 - 2500'	24# & 32#	J-55	ST&C	New
5 1/2	0 - T.D.	15.5# & 17#	J-55	ST&C	New

5. Pressure Control Equipment: The blowout preventer will be a double ram type preventer. A sketch is attached.
6. Mud Program:  
0-350': Native mud adding gel and lime for sufficient viscosity to insure clean hole for running casing.  
350'-2500': Drill out with native becoming brine.  
2500'- T.D.: Drill out of intermediate with a cut brine system to T.D.
7. Auxiliary Equipment: A kelly cock will be installed on the rig floor while drilling operations are in progress.
8. Testing, Logging and Coring Programs: Possible drill stem tests and/or coring is not planned.  
  
Logging: Compensated Neutron - Formation Density - Gamma Ray - Caliper Dual Laterolog - RXO.
9. No abnormal pressures or temperature zones are anticipated.
10. Anticipated starting date: Commence drilling operations ASAP.

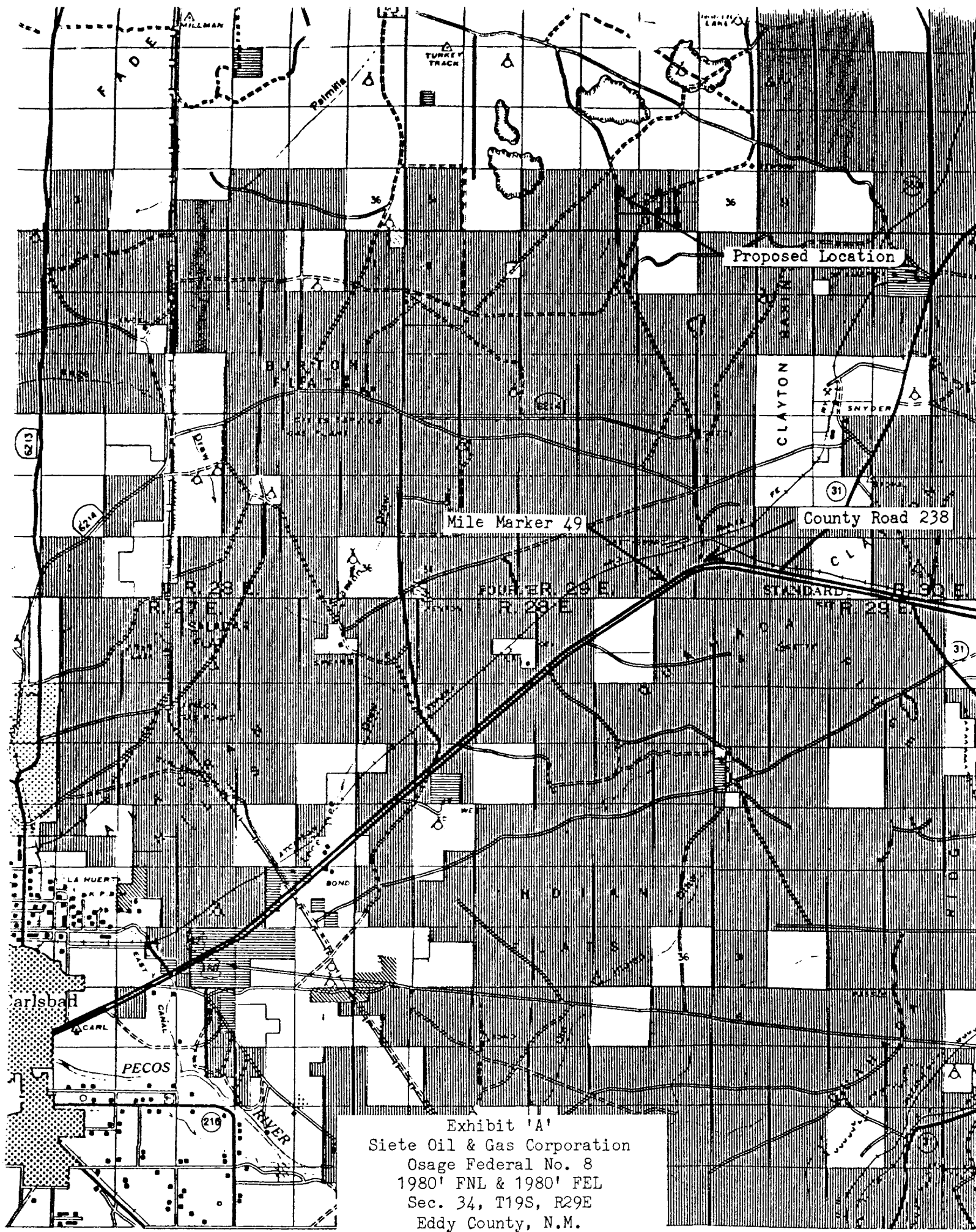


Exhibit 'A'  
Siete Oil & Gas Corporation  
Osage Federal No. 8  
1980' FNL & 1980' FEL  
Sec. 34, T19S, R29E  
Eddy County, N.M.

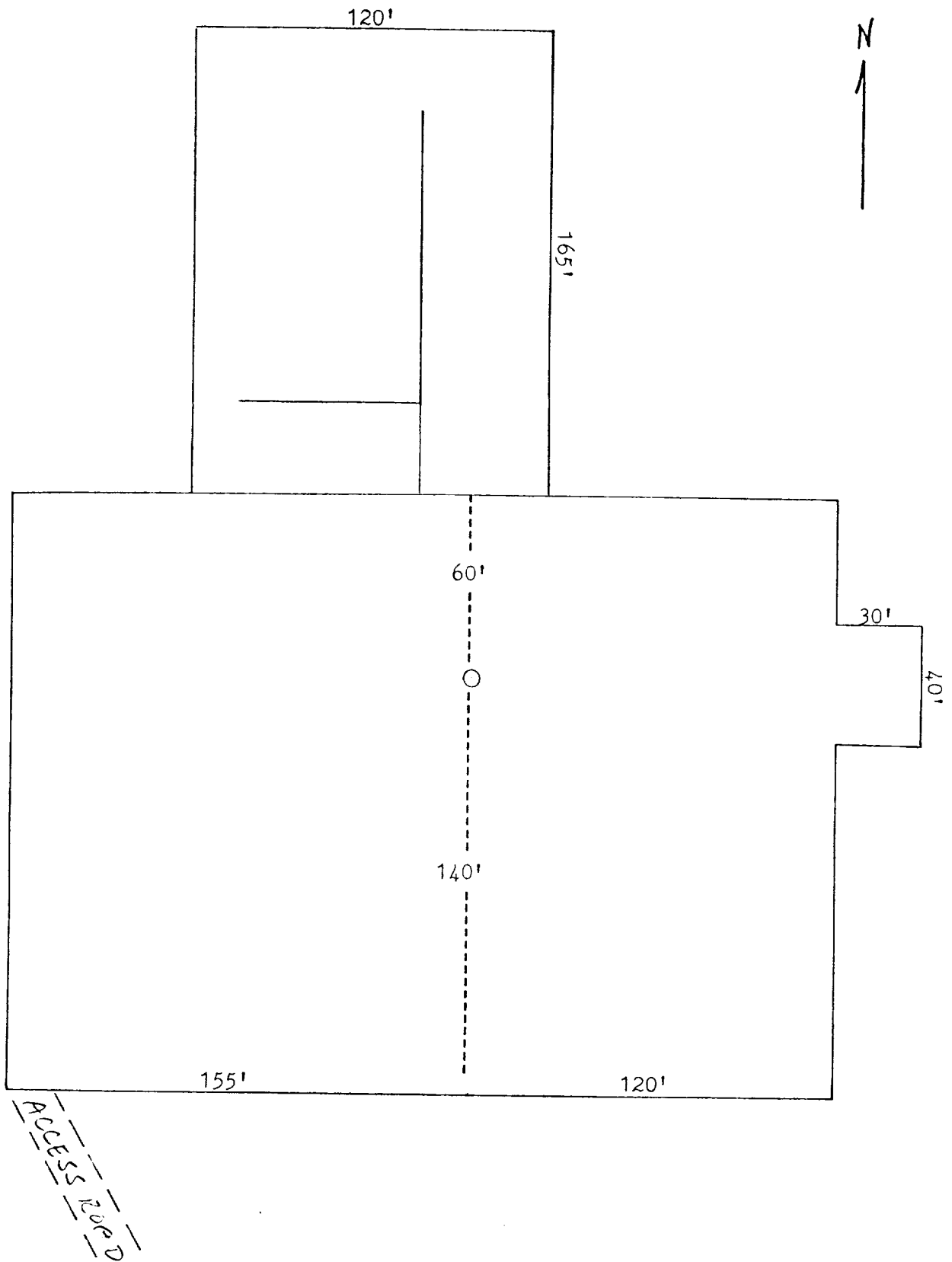


Exhibit 'D'  
Siete Oil & Gas Corporation  
Osage Federal No. 8  
1980' FNL & 1980' FEL  
Sec. 34, T19S, R29E  
Eddy County, N.M.