

NEW MEXICO OIL CONSERVATION COMMISSION
WELL LOCATION AND ACREAGE DEDICATION PLAT

RECEIVED

Form C-102
Supersedes C-128
Effective 1-1-65

All distances must be from the outer boundaries of the Section.

MAY 23 '90

Operator SIETE OIL & GAS CORPORATION		Lease Osage Federal		Well No. 8
Unit Letter G	Section 34	Township 19 South	Range 29 East	County Eddy County, N.M.

Actual Footage Location of Well:

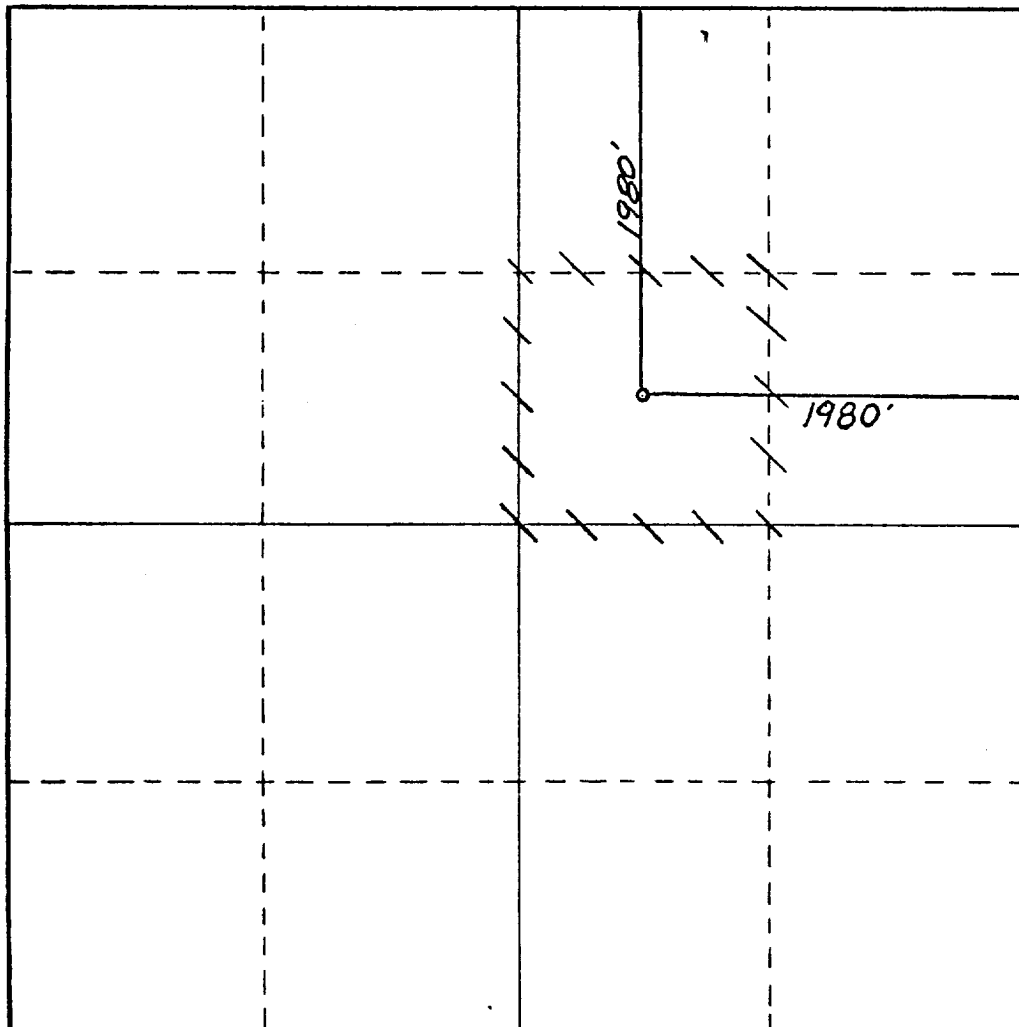
1980 feet from the North line and		1980 feet from the East line	
Ground Level Elev. 3320.	Producing Formation Bone Spring	Pool Parkway	Dedicated Acreage: 40 Acres

1. Outline the acreage dedicated to the subject well by colored pencil or hachure marks on the plat below.
2. If more than one lease is dedicated to the well, outline each and identify the ownership thereof (both as to working interest and royalty).
3. If more than one lease of different ownership is dedicated to the well, have the interests of all owners been consolidated by communitization, unitization, force-pooling, etc?

☐ Yes ☐ No If answer is "yes," type of consolidation _____

If answer is "no," list the owners and tract descriptions which have actually been consolidated. (Use reverse side of this form if necessary.) _____

No allowable will be assigned to the well until all interests have been consolidated (by communitization, unitization, forced-pooling, or otherwise) or until a non-standard unit, eliminating such interests, has been approved by the Commission.



CERTIFICATION

I hereby certify that the information contained herein is true and complete to the best of my knowledge and belief.

Name
Harold D. Justice
Position
V.P. Drilling & Production
Company
SIETE OIL & GAS CORPORATION
Date
March 17, 1989

DAN R. REDDY
NEW MEXICO
REGISTERED PROFESSIONAL ENGINEER
I hereby certify that the well location shown on this plat was plotted from field notes of actual surveys made by me or under my supervision and that the same is true and correct to the best of my knowledge and belief.

Date Surveyed
March 15, 1989
Registered Professional Engineer and/or Land Surveyor

Dan R. Reddy
Certificate No.

NM PE&LS NO. 5412

