

DISTRICT I  
P.O.Box 1980, Hobbs, NM 88241-1980  
DISTRICT II  
P.O. Drawer DD, Artesia, NM 88211-0719  
DISTRICT III  
1000 Rio Brazos Rd, Aztec, NM 87410

State of New Mexico  
Energy, Minerals and Natural Resources Department

OIL CONSERVATION DIVISION  
P.O. Box 2088  
Santa Fe, New Mexico 87504-2088

RECEIVED

MAR - 9 1992

O. C. D.  
ARTESIA OFFICE

Form C-107  
Revised 4-1-91

MC 12

Filing Instructions  
Bottom of Page

APPLICATION FOR MULTIPLE COMPLETION

Yates Petroleum Corporation 105 S. 10th Str. Artesia, NM 88210

Operator	Address		
Parish IV Com	2	N	26-19S-24E
Eddy			
Lease	Well No.	Unit Ltr. - Sec - Twp - Rge	County

All applicants for multiple completion must complete Items 1 and 2 below.

1. The following facts are submitted:	Upper Zone	Intermediate Zone	Lower Zone
a. Name of Pool and Formation	Canyon		Atoka/Morrow
b. Top and Bottom of Pay Section (Perforations)	7629-7673'		8585-88' 8631-46' 8900-08'; 8921-28'
c. Type of production (Oil or Gas)	Oil & Gas		Gas
d. Method of Production (Flowing or Artificial Lift)	Flowing		Flowing
e. Daily Production <input checked="" type="checkbox"/> Actual Canyon <input checked="" type="checkbox"/> Estimated Morrow Oil Bbls. <i>Atoka</i> Gas MCF Water Bbls.	400 MCF/D 300 BWPD		450 MCF/D 64% Atoka 36% Morrow Commingled by Adm. Order DHC-833

2. The following must be attached:
- Diagrammatic Sketch of the Multiple Completion, showing all casing strings, including diameters and setting depths, centralizers and/or turbolizers and location thereof, quantities used and top of cement, perforated intervals, tubing strings, including diameters and setting depth, location and type of packers and side door chokes, and such other information as may be pertinent.
  - Plat showing the location of all wells on applicant's lease, all offset wells on offset leases, and the names and addresses of operators of all leases offsetting applicant's lease.
  - Electrical log of the well or other acceptable log with tops and bottoms of producing zones and intervals of perforation indicated thereon. (If such log is not available at the time application is filed it shall be submitted as provided by Rule 112-A-E.)

OPERATOR:

I hereby certify above information is true and complete to best of my knowledge, and belief.

Signature Chuck Morgan  
Printed Name & Title Chuck Morgan, Engineer  
Date 3/6/92 Telephone (505) 748-1471

OIL CONSERVATION DIVISION

Approved by: [Signature]  
Title: SUPERVISOR, DISTRICT II  
Date: MAY 10 1992

NOTE: If the proposed multiple completion will result in an unorthodox well location and/or a non-standard proration unit in one or more of the producing zones, then separate application for approval of the same should be filed simultaneously with this application.

FILING INSTRUCTIONS:

- District Approval -- See rule 112-A-B -- Submit 4 copies of Form C-107 with attachments to appropriate district office.
- Division Director Administrative Approval -- See Rule 112-C -- Submit 2 copies of Form C-107 with attachments to Division office in Santa Fe and 2 copies of Form C-107 with attachments to appropriate district office.
- Multiple completions not qualifying for District or Division Director approval may be set for hearing as outlined in Rule 112-A-E.

N. MEXICO OIL CONSERVATION COMMISSION  
WELL LOCATION AND ACREAGE DEDICATION PLAT

Form C-102  
Supersedes C-128  
Effective 1-1-65

All distances must be from the outer boundaries of the Section.

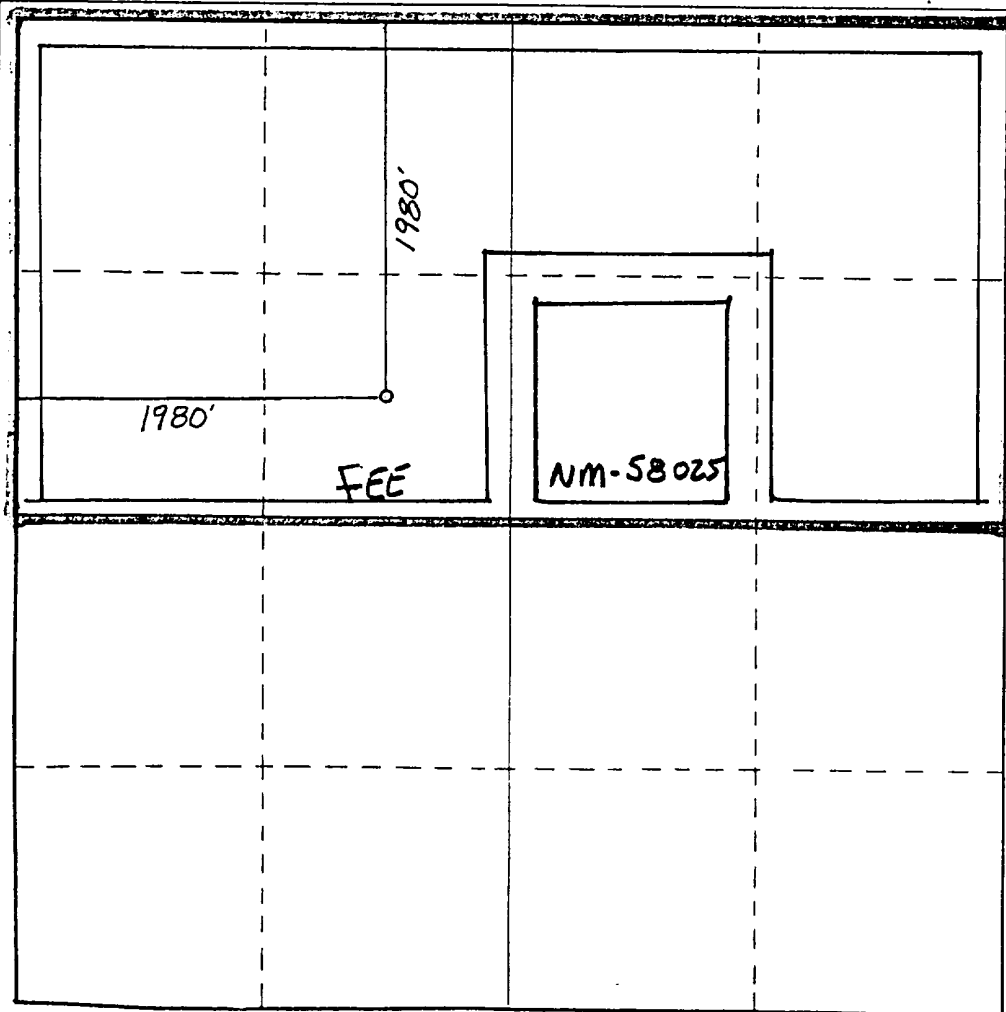
Operator <b>YATES PETROLEUM CORPORATION</b>			Lease <b>Parish IV Com</b>		Well No. <b>2</b>
Unit Letter <b>F</b>	Section <b>26</b>	Township <b>19 South</b>	Range <b>24 East</b>	County <b>Eddy County, N.M.</b>	
Actual Footage Location of Well: <b>1980</b> feet from the <b>North</b> line and <b>1980</b> feet from the <b>West</b> line					
Ground Level Elev. <b>3640.</b>	Producing Formation <b>Morrow</b>		Pool <b>Und. Hoag Tank Morrow</b>	Dedicated Acreage: <b>3.20</b> Acres	

1. Outline the acreage dedicated to the subject well by colored pencil or hachure marks on the plat below.
2. If more than one lease is dedicated to the well, outline each and identify the ownership thereof (both as to working interest and royalty).
3. If more than one lease of different ownership is dedicated to the well, have the interests of all owners been consolidated by communitization, unitization, force-pooling, etc?

Yes  No If answer is "yes," type of consolidation Communitized

If answer is "no," list the owners and tract descriptions which have actually been consolidated. (Use reverse side of this form if necessary.) \_\_\_\_\_

No allowable will be assigned to the well until all interests have been consolidated (by communitization, unitization, forced-pooling, or otherwise) or until a non-standard unit, eliminating such interests, has been approved by the Commission.



CERTIFICATION

I hereby certify that the information contained herein is true and complete to the best of my knowledge and belief.

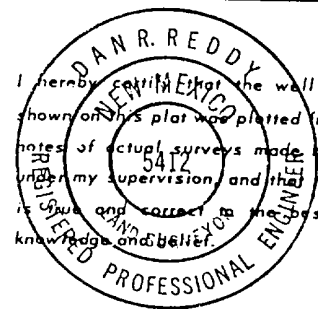
*Ken Beardcamp*

Name  
**KEN BEARDCAMPAL**

Position  
**LANDMAN**

Company  
**Yates Pet. Corp.**

Date  
**8-23-89**



I hereby certify that the well location shown on this plat was plotted from field notes of actual surveys made by me or under my supervision and that the same is true and correct to the best of my knowledge and belief.

Date Surveyed  
**August 21, 1989**

Registered Professional Engineer and/or Land Surveyor

*Dan R. Reddy*

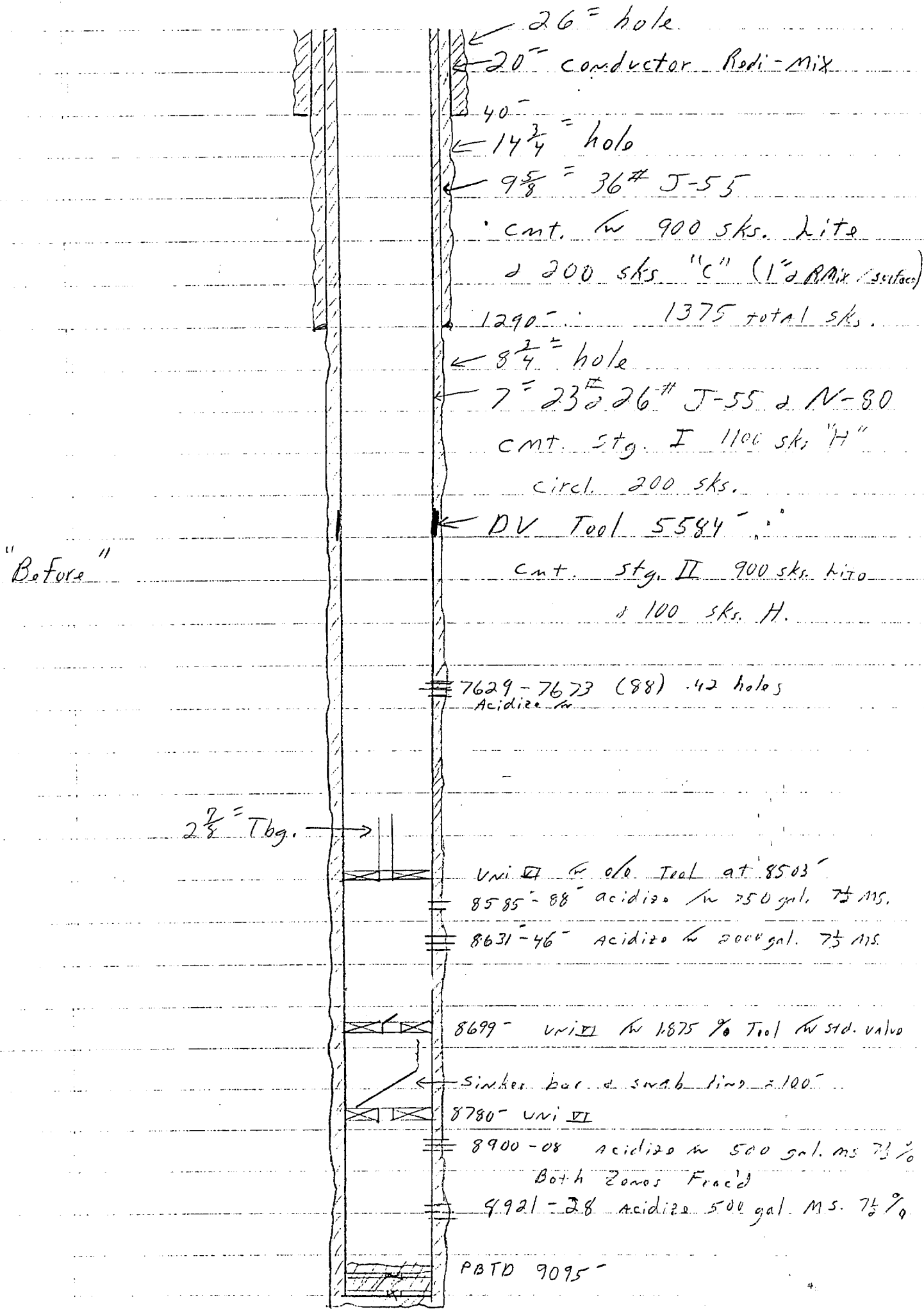
Certificate No.  
**NM DEETS NO 5412**



Parish IV Com #2

Sec. 26-195-24E

1980 FWH & 1980 FWH



26" hole  
 20" conductor Rodi-Mix  
 40"  
 14 3/4" hole  
 9 5/8" = 36# J-55  
 cmt. w 900 sks. Lite  
 & 200 sks "C" (1" PMix surface)  
 1290- 1375 total sks.  
 8 3/4" hole  
 7" = 23# 26" J-55 & N-80  
 cmt. stg. I 1100 sks "H"  
 incl. 200 sks.  
 DV Tool 5584"  
 cmt. stg. II 900 sks. Lite  
 & 100 sks. H.

7629-7673 (88) .42 holes  
 Acidize w

2 7/8" Tbg. →

Uni VI w o/c Tool at 8503'  
 8585-88" acidize w 750 gal. 7 1/2 MS.  
 8631-46" Acidize w 2000 gal. 7 1/2 MS.

8699- Uni VI w 1875 % Tool w std. valve

Sinker bar & snub line = 100'

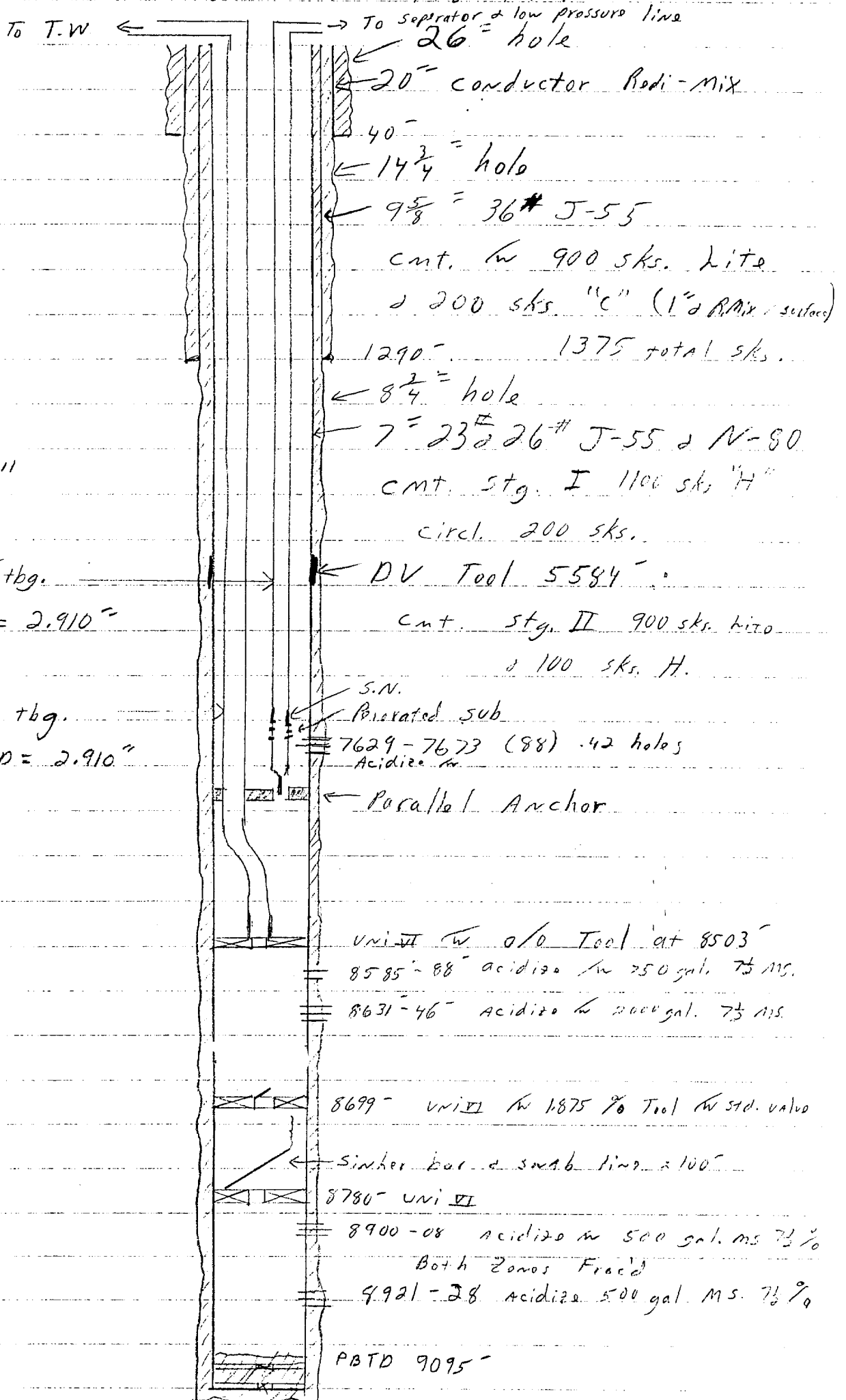
8780- Uni VI  
 8900-08 acidize w 500 gal. MS 7 1/2 %  
 Both zones Frac'd  
 8921-28 Acidize 500 gal. MS. 7 1/2 %

PBTD 9095'

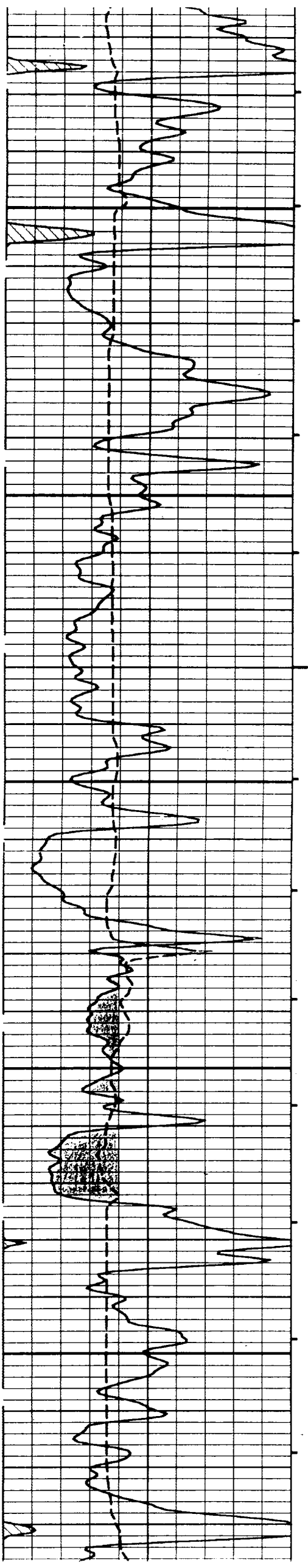
Parish IV Com #2

Sec. 26-195-24E

1980 FWH & 1980 FWH



"After"

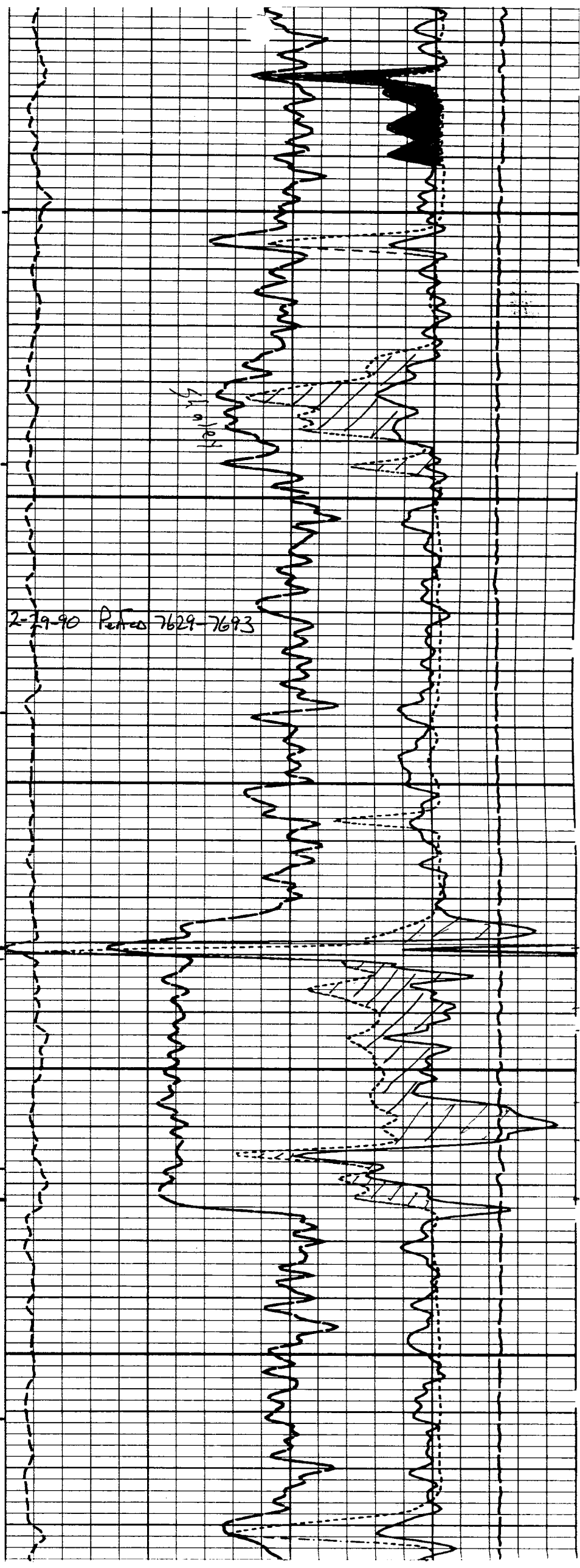


7500

7600

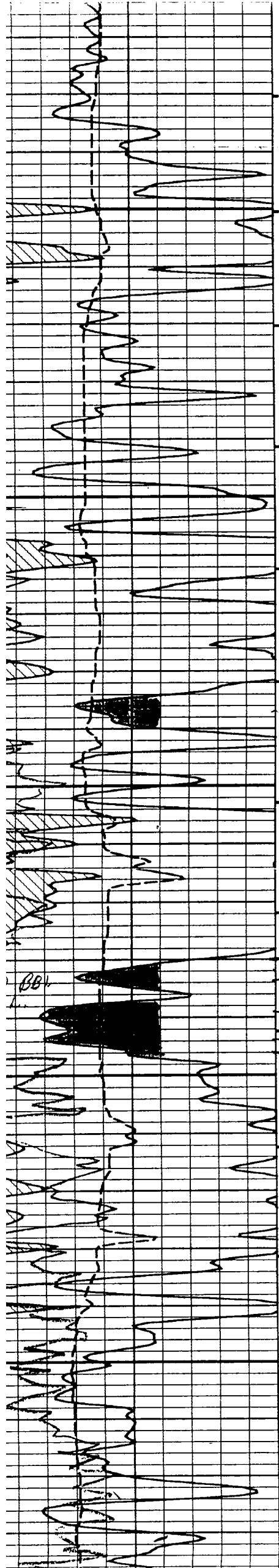
7700

Pr. 13



2-79-90 Petros 7629-7693

511  
10/1/81



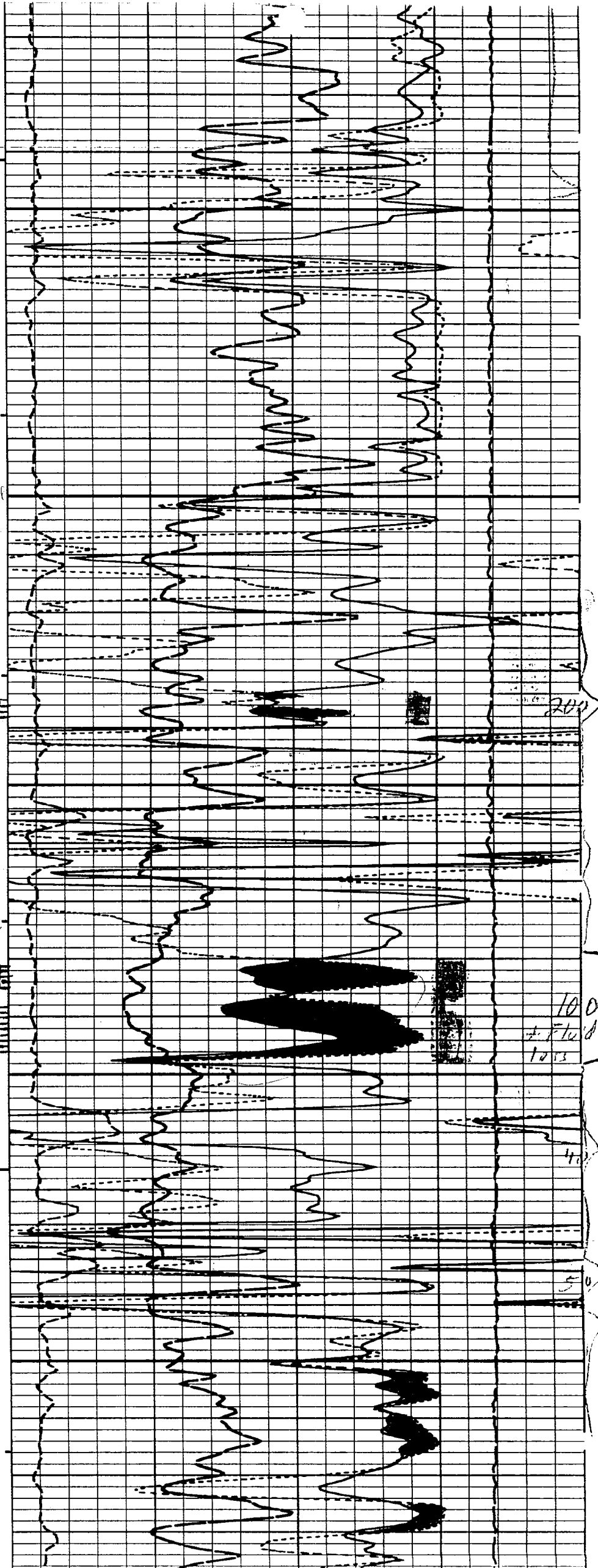
8500

100  
10  
21

8600

Ø 5W  
9 120 21  
8.5 300 14  
9.5 200 16  
4 1000 17  
9 100 19

8700

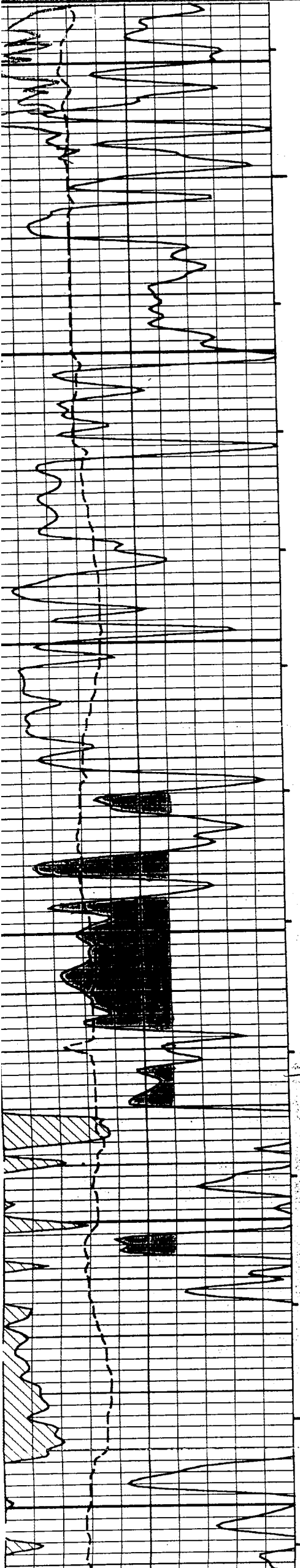


200

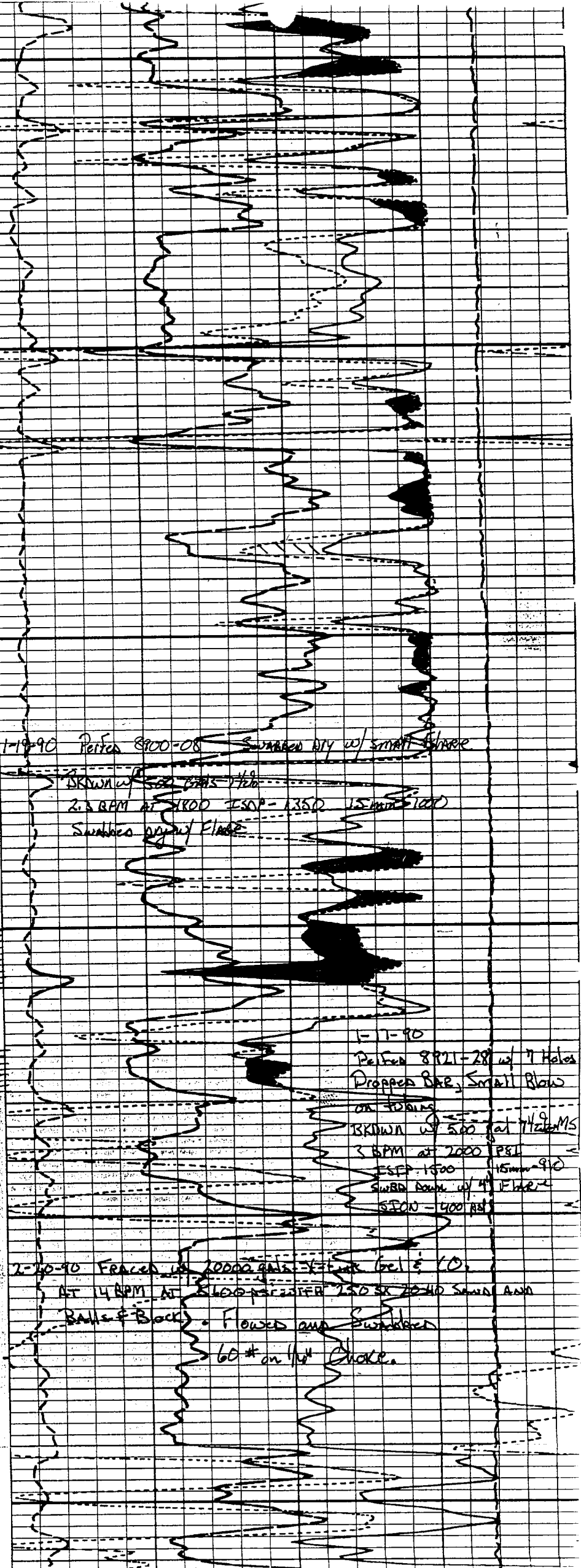
100  
1000  
1000

40

50



8800



1-19-90 Perfor 8900-08 Swabbed w/ small blow  
 SKOWN w/ 500 gal 1 1/2"  
 2.3 BPM AT 2100 ISOP - 1350 15 min 1000  
 Swabbed w/ 1/2" Flare

8900

1-1-90  
 Perfor 8921-28 w/ 7 Holes  
 Dropped Bar, Small Blow  
 on tubing  
 SKOWN w/ 500 gal 1 1/2" MS  
 3 BPM AT 2000 PSI  
 ISOP - 1500 15 min 910  
 Swabbed w/ 1/2" Flare  
 ISOP - 400 PSI

2-20-90 Fraced w/ 20000 gals 3 1/2" bit (10)  
 AT 4 BPM AT 2100 PSI 150 SK 20-40 Sand Ann  
 Balls & Back - Flowed and Swabbed  
 60# on 1/2" choke

9000