

UNITED STATES
DEPARTMENT OF THE INTERIOR
BUREAU OF LAND MANAGEMENT

NEW OIL COMB. SUBMIT IN TRI-DATE*
Driller DD
Artesia, NM 88210
(Other instructions on reverse side)

30-015-26157
Form approved.
Budget Bureau No. 1004-0136
Expires August 31, 1985

APPLICATION FOR PERMIT TO DRILL, DEEPEN, OR PLUG BACK

1a. TYPE OF WORK

DRILL ☒

DEEPEN ☐

PLUG BACK ☐

b. TYPE OF WELL

OIL WELL ☒

GAS WELL ☐

OTHER

SINGLE ZONE ☒

MULTIPLE ZONE ☐

2. NAME OF OPERATOR

Siete Oil and Gas Corporation

3. ADDRESS OF OPERATOR

P.O. Box 2523

Roswell, NM 88202-2523

4. LOCATION OF WELL (Report location clearly and in accordance with any State requirements.)*

At surface

990' FNL & 1980' FEL, NW $\frac{1}{4}$ NE $\frac{1}{4}$, Unit Letter B

At proposed prod. zone

Same

14. DISTANCE IN MILES AND DIRECTION FROM NEAREST TOWN OR POST OFFICE*

16 miles Northeast of Carlsbad, New Mexico

15. DISTANCE FROM PROPOSED*

LOCATION TO NEAREST
PROPERTY OR LEASE LINE, FT.
(Also to nearest drlg. unit line, if any)

990'

16. NO. OF ACRES IN LEASE

1320

17. NO. OF ACRES ASSIGNED TO THIS WELL

40

18. DISTANCE FROM PROPOSED LOCATION*

TO NEAREST WELL, DRILLING, COMPLETED,
OR APPLIED FOR, ON THIS LEASE, FT.

990'

19. PROPOSED DEPTH

9500'

20. ROTARY OR CABLE TOOLS

Rotary

21. ELEVATIONS (Show whether DF, RT, GR, etc.)

3319' GR

22. APPROX. DATE WORK WILL START*

ASAP

23. PROPOSED CASING AND CEMENTING PROGRAM

SIZE OF HOLE	SIZE OF CASING	WEIGHT PER FOOT	SETTING DEPTH	QUANTITY OF CEMENT
26"	20"	94#	350'	350 sxs circ
17 1/2"	13 3/8"	54#	1150'	500 sxs circ
12 1/4"	8 5/8"	24# & 32#	3200'	1000 sxs circ
7 7/8"	5 1/2"	20# & 17#	9500'	1500 sxs

Selectively perforate and treat pay zones.

Attachments:

Survey plat (C-102)
Supplemental drilling data
Surface use plan

APPROVAL SUBJECT TO
GENERAL REQUIREMENTS AND
SPECIAL STIMULATIONS
ATTACHED

IN ABOVE SPACE DESCRIBE PROPOSED PROGRAM: If proposal is to deepen or plug back, give data on present productive zone and proposed new productive zone. If proposal is to drill or deepen directionally, give pertinent data on subsurface locations and measured and true vertical depths. Give blowout preventer program, if any.

24.

SIGNED

Cathy Battey

TITLE Drilling & Production Tech

DATE 6/28/89

(This space for Federal or State office use)

PERMIT NO.

APPROVAL DATE

APPROVED BY

Spencer P. P. P.

TITLE

AREA MANAGER
CARLSBAD RESOURCE AREA

DATE

7-20-89

CONDITIONS OF APPROVAL, IF ANY:

*See Instructions On Reverse Side

N MEXICO OIL CONSERVATION COMMISS.
WELL LOCATION AND ACREAGE DEDICATION PL

RECEIVE	Form C-102
	Supersedes C-128
	Effective 1-1-65
JUN 27 1989	
Well No.	9

All distances must be from the outer boundaries of the Section.

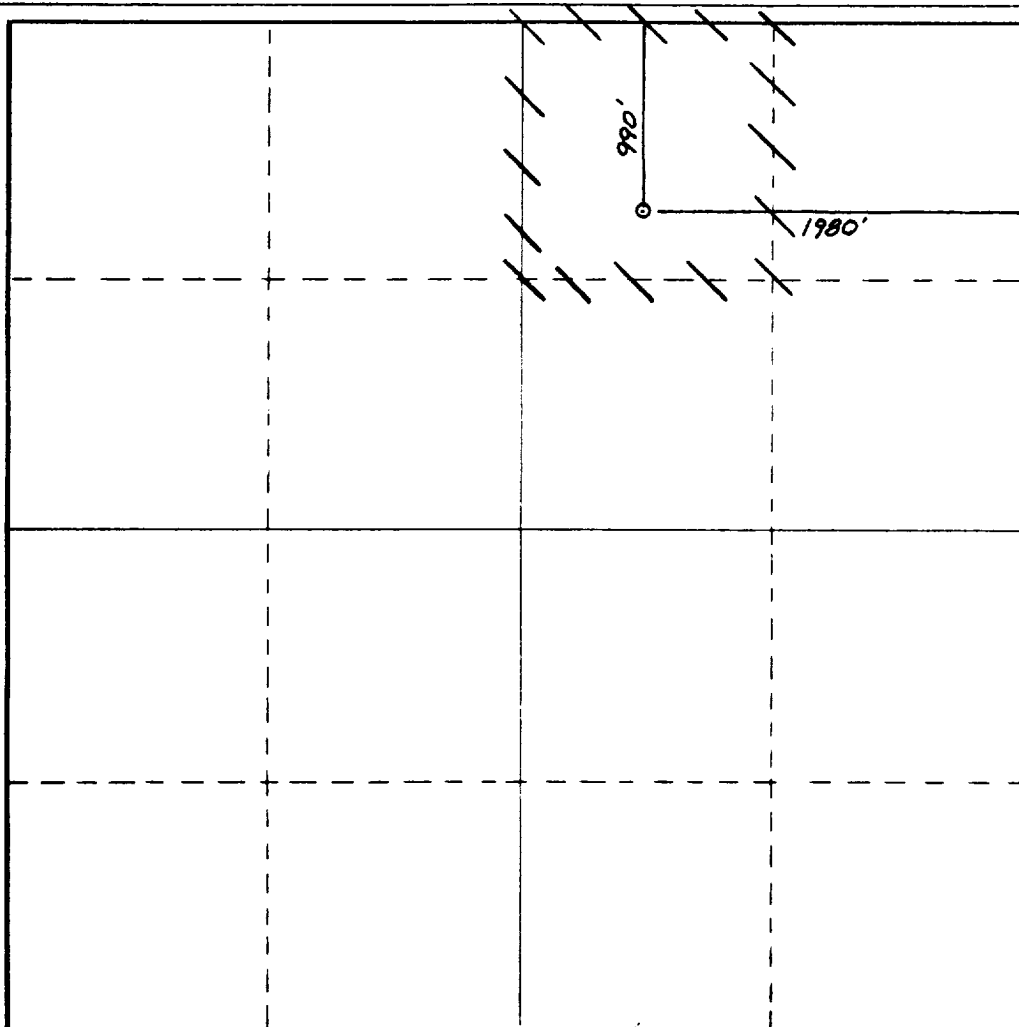
Operator SIETE OIL & GAS CORPORATION			Lease Osage Federal		
Unit Letter B	Section 34	Township 19 South	Range 29 East	County Eddy County, N.M.	
Actual Footage Location of Well: 990 feet from the North line and 1980 feet from the East line					
Ground Level Elev. 3319'	Producing Formation Wolfcamp		Pool UND. PARKWAY WOLF CAMP Wildcat	Dedicated Acreage: 40 Acres	

1. Outline the acreage dedicated to the subject well by colored pencil or hachure marks on the plat below.
2. If more than one lease is dedicated to the well, outline each and identify the ownership thereof (both as to working interest and royalty).
3. If more than one lease of different ownership is dedicated to the well, have the interests of all owners been consolidated by communitization, unitization, force-pooling, etc?

☐ Yes ☐ No If answer is "yes," type of consolidation _____

If answer is "no," list the owners and tract descriptions which have actually been consolidated. (Use reverse side of this form if necessary.) _____

No allowable will be assigned to the well until all interests have been consolidated (by communitization, unitization, forced-pooling, or otherwise) or until a non-standard unit, eliminating such interests, has been approved by the Commission.



CERTIFICATION

I hereby certify that the information contained herein is true and complete to the best of my knowledge and belief.

Harold D. Justice

Name

V.P. Drilling & Production

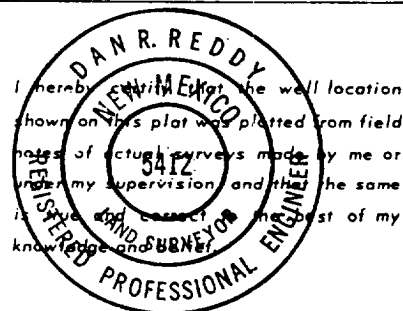
Position

Siete Oil & Gas Corporation

Company

June 28, 1989

Date



Date Surveyed

June 21, 1989

Registered Professional Engineer
and/or Land Surveyor

Dan R. Reddy
Certificate No.

NM PE&LS NO. 5412

0 330 660 990 1320 1650 1980 2310 2640 2000 1500 1000 500 0

SUPPLEMENTAL DRILLING DATA
SIETE OIL AND GAS CORPORATION
OSAGE FEDERAL #9
990' FNL & 1980' FEL
Section 34: T19S, R29E
Eddy County, New Mexico
Lease Number: NM-24160

The following items supplement "Onshore Oil and Gas Order No. 1":

1. The geologic surface is quaternary.
2. The estimated geological marker tops:

B/Salt	1000'
Queen	2500'
Del. Sand	3400'
T/Bone Spring	5700'

3. Estimated depths to water, oil or gas:

Water: Approximately 220'
Oil or Gas: 9300'

4. Proposed casing program:

<u>Size</u>	<u>Interval</u>	<u>Weight</u>	<u>Grade</u>	<u>Joint</u>	<u>New or Used</u>
20	0 - 350'	94#	J-55	LT&C	New
13 3/8	0 - 1150'	54#	J-55	LT&C	New
8 5/8	0 - 3200'	24# & 32#	J-55	LT&C	New
5 1/2	0 - T.D.	20# & 17#	J-55	LT&C	New

5. Pressure Control Equipment: The blowout preventer will be a double ram type preventer. A sketch is attached.
6. Mud Program:
 - 0-350': Native mud adding gel and lime for sufficient viscosity to insure clean hole for running casing.
 - 350'-3200': Cut Brine.
 - 3200'-T.D.: Drill out with native becoming brine, add starch and salt gel to maintain a viscosity of 30, @ T.D. 40; mud weight 9.8-10.0.
7. Auxiliary Equipment: A kelly cock will be installed on the rig floor while drilling operations are in progress.
8. Testing, Logging and Coring Programs: Possible drill stem tests and/or coring is not planned.
 Logging: Compensated Neutron - Formation Density - Gamma Ray - Caliper Dual Laterolog - RXO.
9. No abnormal pressures or temperature zones are anticipated.
10. Anticipated starting date: Commence drilling operations ASAP.

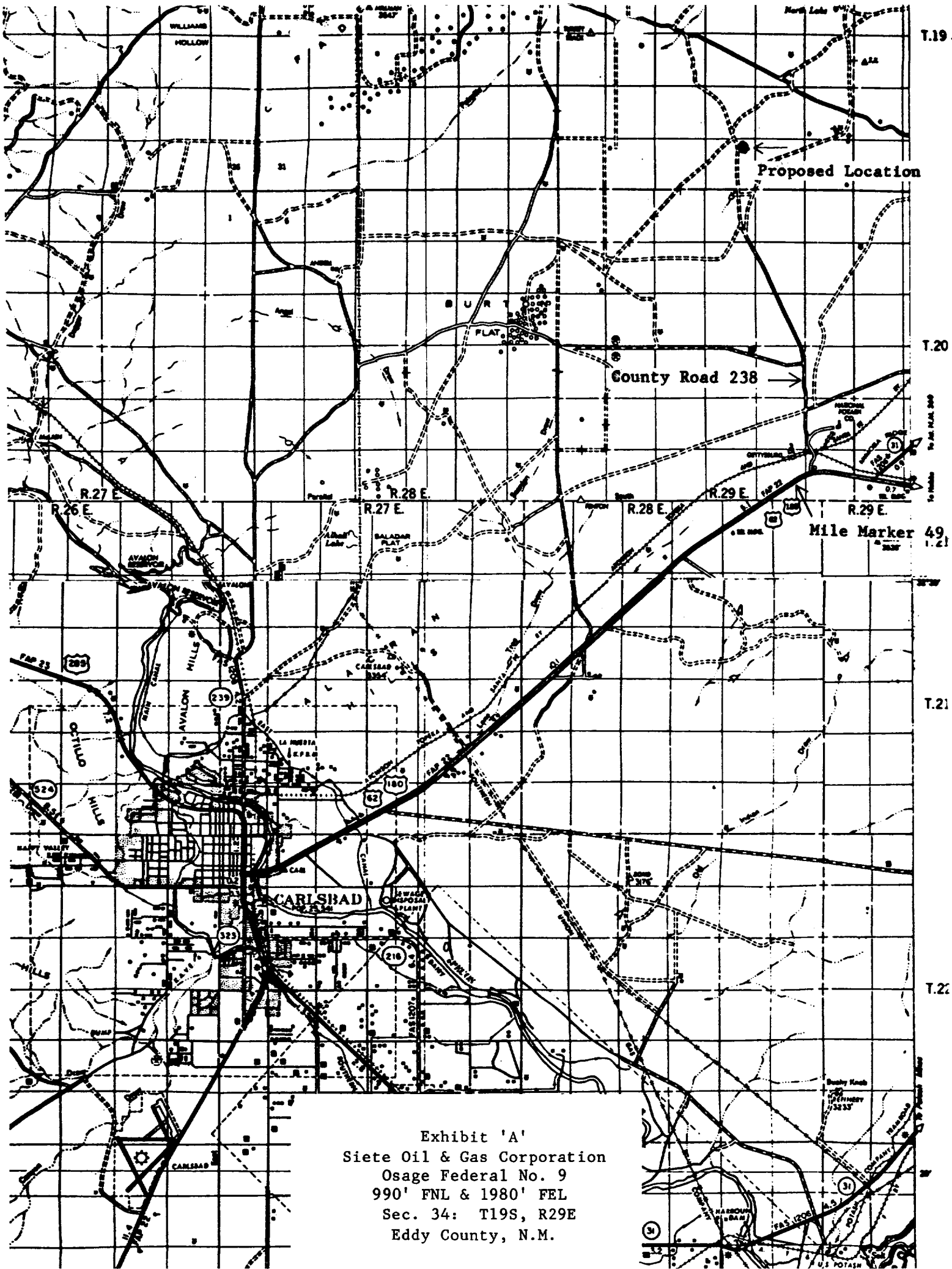


Exhibit 'A'
Siete Oil & Gas Corporation
Osage Federal No. 9
990' FNL & 1980' FEL
Sec. 34: T19S, R29E
Eddy County, N.M.

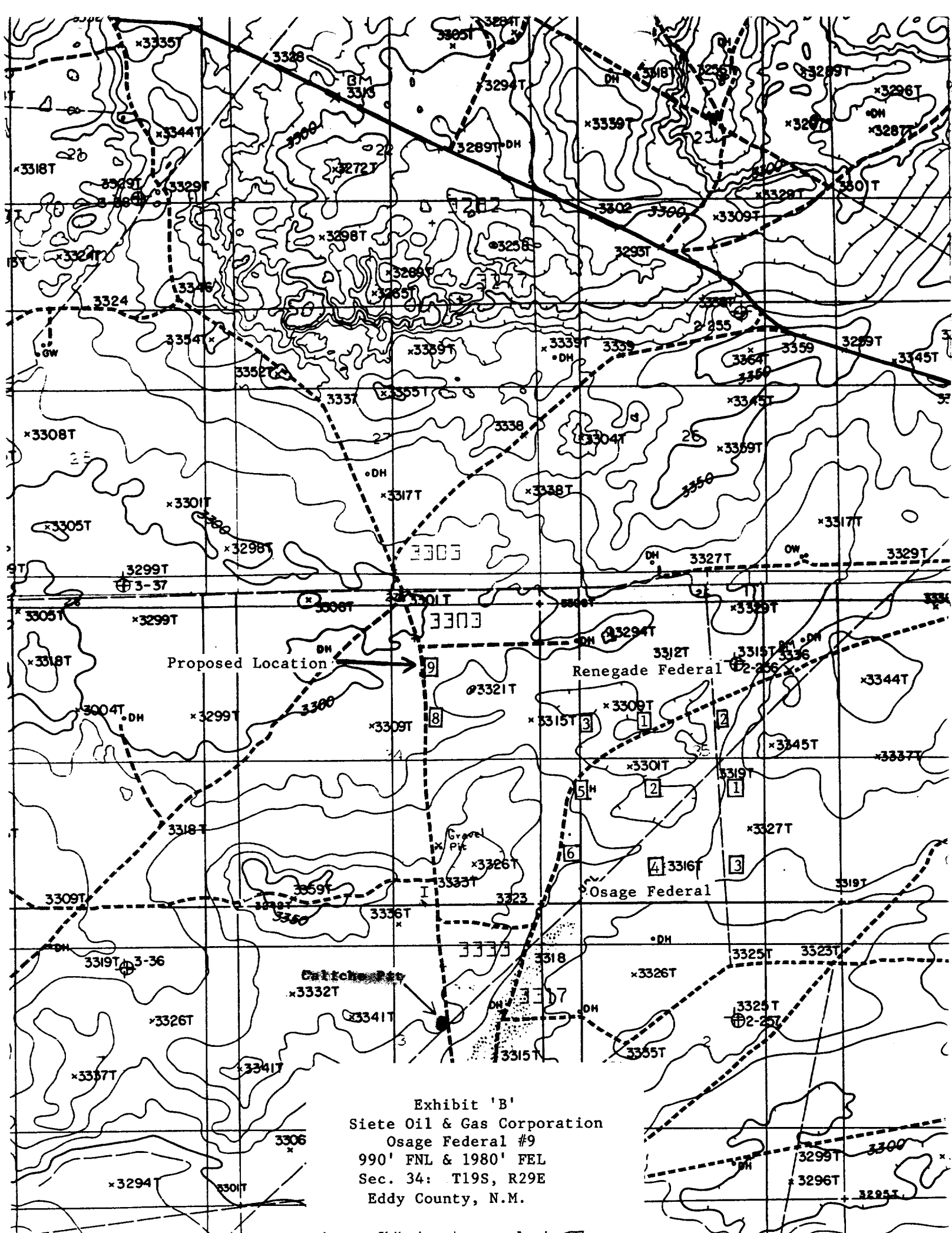


Exhibit 'B'
Siete Oil & Gas Corporation
Osage Federal #9
990' FNL & 1980' FEL
Sec. 34: T19S, R29E
Eddy County, N.M.

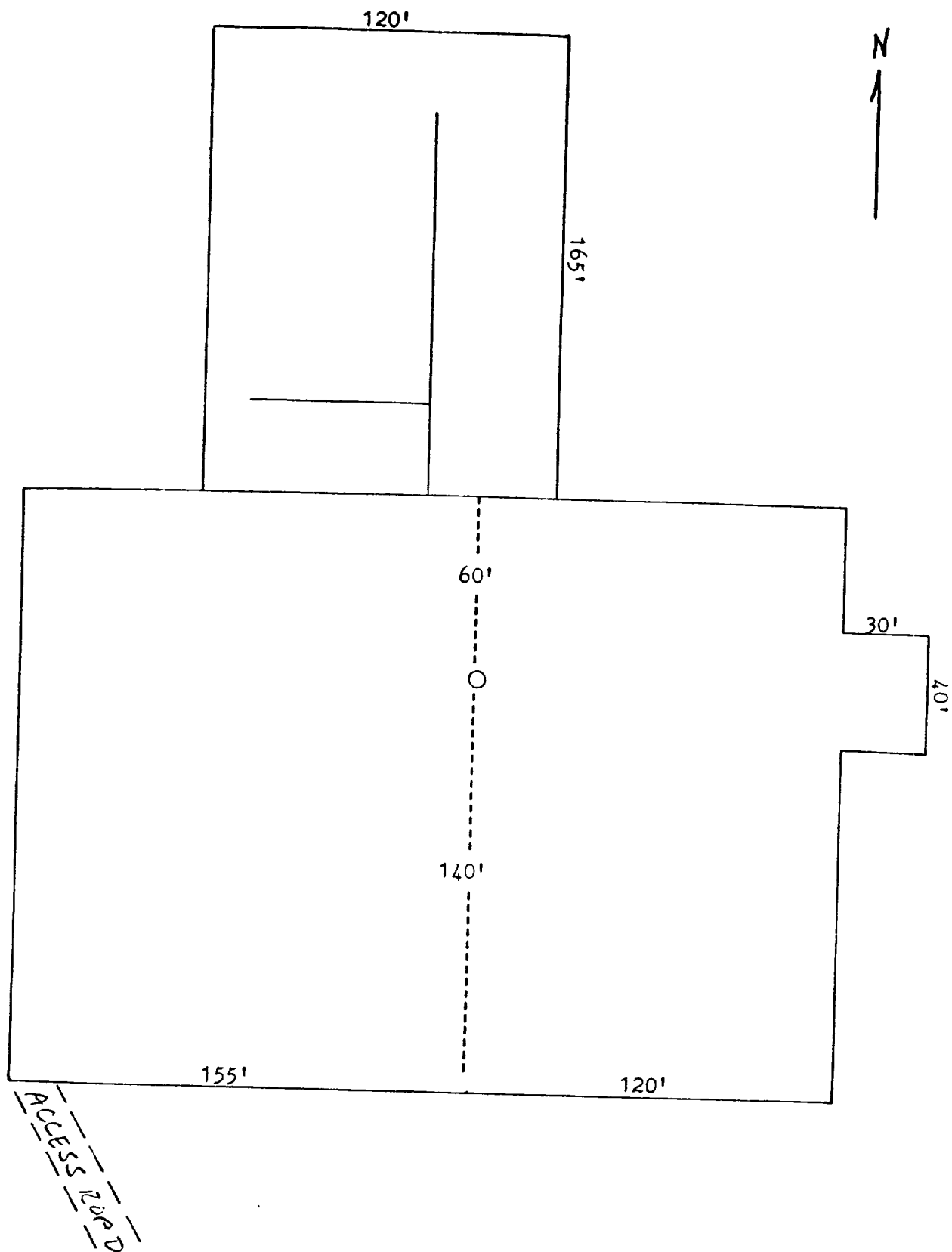


Exhibit 'D'
Siete Oil & Gas Corporation
Osage Federal No. 8
1980' FNL & 1980' FEL
Sec. 34, T19S, R29E
Eddy County, N.M.