

Submit to Appropriate
District Office
State Lease -- 6 copies
Fee Lease -- 5 copies

State of New Mexico
Energy, Minerals and Natural Resources Department

RECEIVED

Form C-101
Revised 1-1-89

OIL CONSERVATION DIVISION

P.O. Box 2088
Santa Fe, New Mexico 87504-2088

SEP 15 '89

DISTRICT I
P.O. Box 1980, Hobbs, NM 88240

DISTRICT II
P.O. Drawer DD, Artesia, NM 88210

DISTRICT III
1000 Rio Brazos Rd., Aztec, NM 87410

API NO. (assigned by OCD on New Wells)

O. C. D. 30-015-26186

ARTESIA

OFFICIAL Type of Lease

STATE ☒

FEE ☐

6. State Oil & Gas Lease No.

B9739-15

APPLICATION FOR PERMIT TO DRILL, DEEPEN, OR PLUG BACK

1a. Type of Work:

DRILL ☒

RE-ENTER ☐

DEEPEN ☐

PLUG BACK ☐

b. Type of Well:

OIL
WELL ☒

GAS
WELL ☐

OTHER ☐

SINGLE
ZONE ☒

MULTIPLE
ZONE ☐

7. Lease Name or Unit Agreement Name

PJ "B" State

2. Name of Operator

Fred Pool Drilling, Inc.

8. Well No.

3

3. Address of Operator

P.O. Box 1393, Roswell, N.M. 88201

9. Pool name or Wildcat

Und. Turkey Trk, SR-Q-G-SA

4. Well Location

Unit Letter F : 2310 Feet From The West Line and 1650 Feet From The north Line

Section 11

Township 19S

Range 29E

NMPM

Eddy

County

10. Proposed Depth

3500'

11. Formation

San Andres

12. Rotary or C.T.

Rotary

13. Elevations (Show whether DF, RT, GR, etc.)

3369'

14. Kind & Status Plug. Bond

Blanket

15. Drilling Contractor

L & M Drilling

16. Approx. Date Work will start

September 20th.

17.

PROPOSED CASING AND CEMENT PROGRAM

| SIZE OF HOLE | SIZE OF CASING | WEIGHT PER FOOT | SETTING DEPTH | SACKS OF CEMENT | EST. TOP |
|--------------|----------------|-----------------|---------------|-----------------|----------|
| 12 1/2 | 8 5/8 | 24# | approx. 350' | 300 sx | - |
| 7 7/8 | 5 1/2 | 15.5# | approx. 3500' | 600 sx | - |

L & M Drilling Company Rig #2 will be used with a 10" Space Saver
Blowout Preventor.

Post ID-1
9-22-89
New Loc 4 API

APPROVAL VALID FOR 180 DAYS
PERMIT EXPIRES 3-18-90
UNLESS DRILLING UNDERWAY

IN ABOVE SPACE DESCRIBE PROPOSED PROGRAM: IF PROPOSAL IS TO DEEPEN OR PLUG BACK, GIVE DATA ON PRESENT PRODUCTIVE ZONE AND PROPOSED NEW PRODUCTIVE ZONE. GIVE BLOWOUT PREVENTER PROGRAM, IF ANY.

I hereby certify that the information above is true and complete to the best of my knowledge and belief.

SIGNATURE

Penta Pool

TITLE

Vice President

DATE 9-14-89

TYPE OR PRINT NAME

Penta Pool

TELEPHONE NO. 623-8202

(This space for State Use)

ORIGINAL SIGNED BY

MIKE WILLIAMS

APPROVED BY

SUPERVISOR, DISTRICT II

TITLE

DATE

SEP 18 1989

CONDITIONS OF APPROVAL, IF ANY:

**W MEXICO OIL CONSERVATION COMMISSION
WELL LOCATION AND ACREAGE DEDICATION PLAT**

Form C-102
Supersedes C-128
Effective 1-1-65

All distances must be from the outer boundaries of the Section.

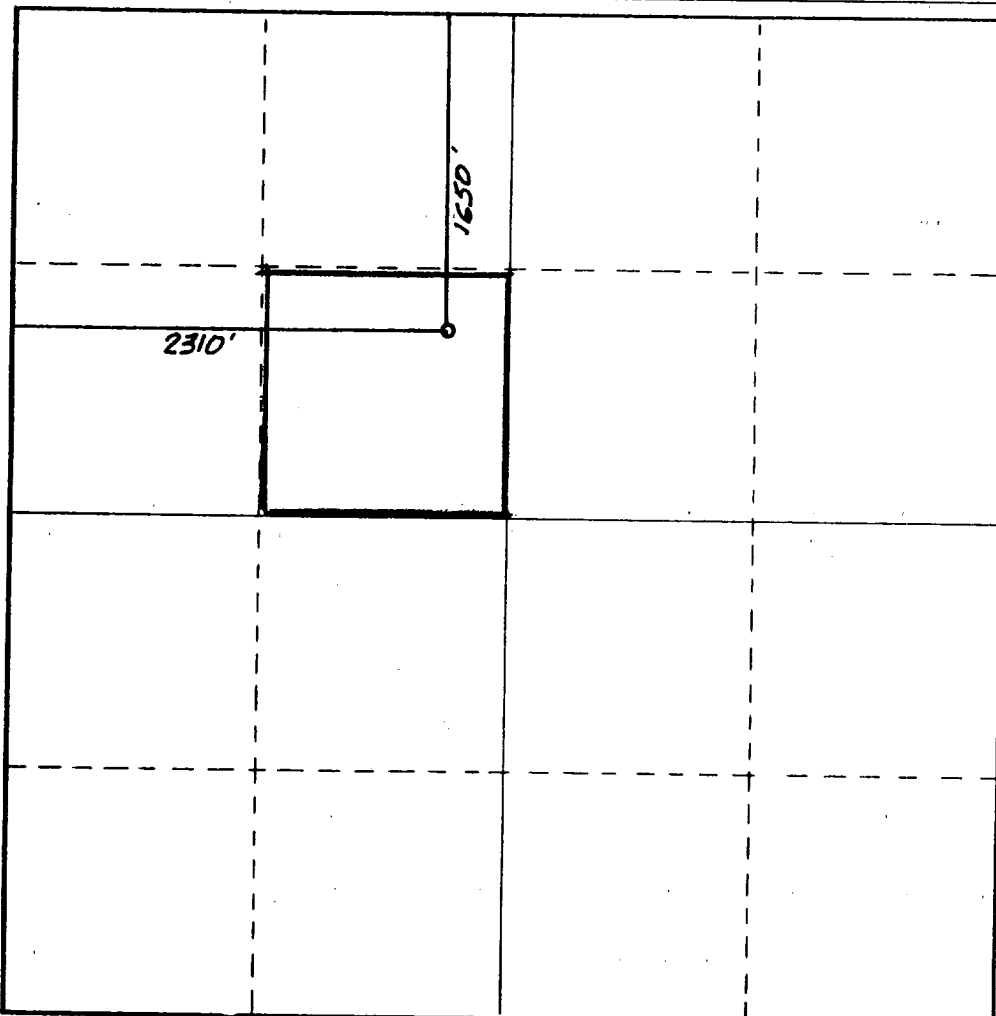
| | | | | | |
|--|--|-----------------------------|---|---------------------------------------|----------------------|
| Operator FRED POOL DRILLING, INC. | | | Lease P J "B" State | | Well No. 3 |
| Unit Letter F | Section 11 | Township 19 South | Range 29 East | County Eddy County, N.M. | |
| Actual Footage Location of Well: 2310 feet from the West line and 1650 feet from the North line | | | | | |
| Ground Level Elev. 3369. | Producing Formation San Andres | | Pool Und. Turkey TrkSR-Q-G-SA | Dedicated Acreage: 40 Acres | |

1. Outline the acreage dedicated to the subject well by colored pencil or hachure marks on the plat below.
2. If more than one lease is dedicated to the well, outline each and identify the ownership thereof (both as to working interest and royalty).
3. If more than one lease of different ownership is dedicated to the well, have the interests of all owners been consolidated by communitization, unitization, force-pooling, etc?

☐ Yes ☐ No If answer is "yes," type of consolidation _____

If answer is "no," list the owners and tract descriptions which have actually been consolidated. (Use reverse side of this form if necessary.) _____

No allowable will be assigned to the well until all interests have been consolidated (by communitization, unitization, forced-pooling, or otherwise) or until a non-standard unit, eliminating such interests, has been approved by the Commission.



CERTIFICATION

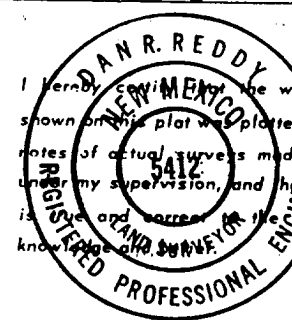
I hereby certify that the information contained herein is true and complete to the best of my knowledge and belief.

Penta Pool

Name
Vice President
Position
Fred Pool Drilling Inc.
Company
9-14-89
Date

Penta Pool

I hereby certify that the well location shown on this plat was plotted from field notes of actual surveys made by me or under my supervision, and that the same is true and correct to the best of my knowledge and belief.



Date Surveyed
September 8, 1989

Registered Professional Engineer
and/or Land Surveyor

Dan R. Reddy

Certificate No.
NM PE&LS NO. 5412

