

O. C. D.

PLUG BACK ☐

**MULTIPLE** ☐  
**ZONE**

ASAP

Title 18 U.S.C. Section 1001, makes it a crime for any person knowingly and willfully to make to any department or agency of the United States any false, fictitious or fraudulent statements or representations as to any matter within its jurisdiction.



**NEW MEXICO OIL CONSERVATION COMMISSION  
WELL LOCATION AND ACREAGE DEDICATION PLAT**

Form C-102  
Supersedes C-128  
Effective 1-1-65

All distances must be from the outer boundaries of the Section.

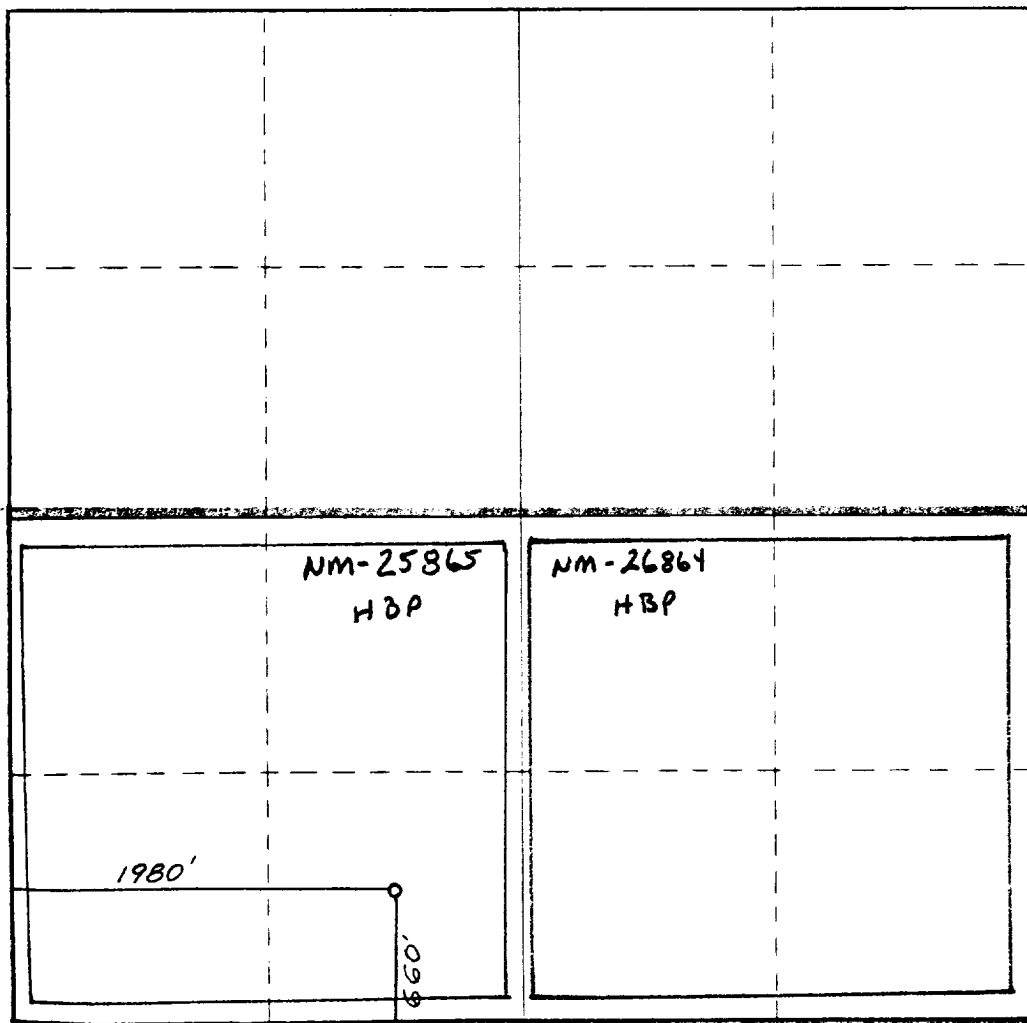
Operator <b>YATES PETROLEUM CORPORATION</b>			Lease <b>Eng TX Federal Com</b>		Well No. <b>2</b>
Unit Letter <b>N</b>	Section <b>26</b>	Township <b>19 South</b>	Range <b>24 East</b>	County <b>Eddy County, N.M.</b>	
Actual Footage Location of Well: <b>660</b> feet from the <b>South</b> line and <b>1980</b> feet from the <b>West</b> line					
Ground Level Elev. <b>3655.</b>	Producing Formation <b>Morrow</b>		Pool <b>Morrow</b>	Dedicated Acreage: <b>320</b> Acres	

1. Outline the acreage dedicated to the subject well by colored pencil or hachure marks on the plat below.
2. If more than one lease is dedicated to the well, outline each and identify the ownership thereof (both as to working interest and royalty).
3. If more than one lease of different ownership is dedicated to the well, have the interests of all owners been consolidated by communitization, unitization, force-pooling, etc?

☒ Yes    ☐ No    If answer is "yes," type of consolidation **Communitization**

If answer is "no," list the owners and tract descriptions which have actually been consolidated. (Use reverse side of this form if necessary.) \_\_\_\_\_

No allowable will be assigned to the well until all interests have been consolidated (by communitization, unitization, forced-pooling, or otherwise) or until a non-standard unit, eliminating such interests, has been approved by the Commission.



**CERTIFICATION**

I hereby certify that the information contained herein is true and complete to the best of my knowledge and belief.

*Ken Beardemphl*  
Name

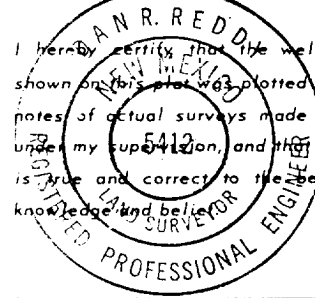
**KEN BEARDEMPL**  
Position

**LANDMAN**  
Company

**Yates Pet. Corp.**  
Date

**8-22-89**

I hereby certify that the well location shown on this plat was plotted from field notes of actual surveys made by me or under my supervision, and that the same is true and correct to the best of my knowledge and belief.



Date Surveyed

**August 21, 1989**

Registered Professional Engineer and/or Land Surveyor

*Don R. Reddy*  
Certificate No.

**NM PE&LS NO. 5412**

YATES PETROLEUM CORPORATION  
Eng "TX" Federal #2  
660' FSL & 1980' FWL  
Section 26-T19S-R24E  
Eddy County, New Mexico

In conjunction with Form 3160-3, Application for Permit to Drill subject well, Yates Petroleum Corporation submits the following ten items of pertinent information in accordance with USGS requirements.

1. The geological surface formation is alluvium.
2. The estimated tops of geologic markers are as follows:

San Andres	383'	Base Canyon Dolomite	7658'
Glorieta	1789'	Strawn	8101'
Abo	4015'	Atoka	8637'
Wolfcamp Lime	5201'	Morrow Clastics	8938'
Canyon Limestone Cup	7453'	Chester Lime	9198'
TOP Canyon Dolomite	7628'	TD	9400'.

3. The estimated depths at which anticipated water, oil or gas formations are expected to be encountered:

Water: Approximately 330' - 275'  
Oil or Gas: 8101', 8637', 8938'

4. Proposed Casing Program: See Form 9-331C.
5. Pressure Control Equipment: See Form 9-331C.
6. Mud Program: See Form 9-331C
7. Auxiliary Equipment: Kelly Cock; pit level indicators and flow sensor equipment; sub with full-opening valve on floor, drill pipe connection.
8. Testing, Logging and Coring Program:  
  
Samples: 10 foot samples out from under surface casing to TD.  
DST's: As warranted by drilling breaks and shows  
Coring: None  
Logging: CNL-LDT from TD to casing with GR-CNL on to surface; DLL with RXO TD to casing; LSS TD to casing
9. No abnormal pressures or temperatures are anticipated.
10. Anticipated starting date: As soon as possible after approval.

MULTI-POINT SURFACE USE AND OPERATIONS PLAN  
Yates Petroleum Corporation  
Eng "TX" Federal #2  
660' FSL and 1980' FWL of  
Section 26-T19S-R24E  
Eddy County, New Mexico

This plan is submitted with Form 3160-3, Application for Permit to Drill, covering the above described well. The purpose of this plan is to describe the location of the proposed well, the proposed construction activities and operations plan, the magnitude of surface disturbance involved and the procedures to be followed in rehabilitating the surface after completion of the operations, so that a complete appraisal can be made of the environmental effect associated with the operations.

1. EXISTING ROADS:

Exhibit A is a portion of BLM county map showing the well and roads in the vicinity of the proposed location. The proposed wellsite is located approximately 29 miles southwest of Artesia, New Mexico and the access route to the location is indicated in red and green on Exhibit A.

DIRECTIONS:

- A. Go south of Artesia on Highway 285 for approximately 15 miles to the Rock Daisy Road.
- B. Turn west and go approximately 8 miles.
- C. Turn north for approximately 1/2 mile then turn west to the Roden "GD" #4 location.
- D. New road will start here.

2. PLANNED ACCESS ROAD

- A. The proposed new access will be approximately 2500' in length from point of origin to the southeast edge of the drilling pad. The road will lie in a southeast to northwestern direction.
- B. The new road will be 14 feet in width (driving surface).
- C. The new road will be bladed with drainage on one side. Some turnouts will be built.
- D. The route of the road is visible.

3. LOCATION OF EXISTING WELL

- A. There is drilling activity within a one-mile radius of the wellsite.
- B. Exhibit D shows existing wells within a one-mile radius of the proposed wellsite.

4. LOCATION OF EXISTING AND/OR PROPOSED FACILITIES:

- A. There are production facilities on this lease at the present time.
- B. In the event that the well is productive, the necessary production facilities will be installed on the drilling pad. If the well is productive oil, a gas or diesel self-contained unit will be used to provide the necessary power. No power will be required if the well is productive of gas.

5. LOCATION AND TYPE OF WATER SUPPLY:

- A. It is planned to drill the proposed well with a fresh water system. The water will be obtained from commercial sources and will be hauled to the location by truck over the existing and proposed roads shown in Exhibit A.

6. SOURCE OF CONSTRUCTION MATERIALS:

- A. There is a federal caliche pit located in the SW/4SW/4 of Section 17-T19S-R25E or the caliche will be taken off the location.

7. METHODS OF HANDLING WASTE DISPOSAL:

- A. Drill cuttings will be disposed of in the reserve pits.
- B. Drilling fluids will be allowed to evaporate in the reserve pits until the pits are dry.
- C. Water produced during operations will be collected in tanks until hauled to an approved disposal system, or separate disposal application will be submitted.
- D. Oil produced during operations will be stored in tanks until sold.
- E. Current laws and regulations pertaining to the disposal of human waste will be complied with.
- F. Trash, waste paper, garbage and junk will be buried in a separate trash pit and covered with a minimum of 24 inches of dirt. All waste material will be contained to prevent scattering by the wind.
- G. All trash and debris will be buried or removed from the wellsite within 30 days after finishing drilling and/or completion operations.

8. ANCILLIARY FACILITIES:

- A. None required.

9. WELLSITE LAYOUT:

- A. Exhibit C shows the relative location and dimensions of the well pad, the reserve pits, the location of the drilling equipment, rig orientation and access road approach. A cross section of drill pad with approximate cuts, fills and pad orientation is shown on Exhibit E.
- B. The reserve pits will be plastic lined.
- C. A 400' X 400' area has been staked and flagged.

10. PLANS FOR RESTORATION OF THE SURFACE:

- A. After finishing drilling and/or completion operations, all equipment and other material not needed for further operations will be removed. The location will be cleaned of all trash and junk to leave the wellsite in as aesthetically pleasing a condition as possible.

- B. Unguarded pits, if any, containing fluids will be fenced until they have dried and been levelled.
  - C. If the proposed well is non-productive, all rehabilitation and/or vegetation requirements of the Bureau of Land Management will be complied with and will be accomplished as expeditiously as possible. All pits will be filled level within 90 days after abandonment.
11. SURFACE OWNERSHIP: The surface and minerals are owned by the federal government.
12. OTHER INFORMATION:
- A. Topography: Refer to the archaeological report for a description of the topography, flora, fauna, soil characteristics, dwellings, historical and cultural sites.
  - B. The primary surface use is for grazing.
13. OPERATOR'S REPRESENTATIVE:
- |  |   |
|--|---|
| A. Through A.P.D. Approval:  | B. Through Drilling Operations:   |
| Ken Beardemphl, Landman<br>Yates Petroleum Corporation<br>105 South Fourth Street<br>Artesia, New Mexico 88210<br>Phone (505)-748-1471 | Al Springer, Drilling Superintendent<br>Yates Petroleum Corporation<br>105 South Fourth Street<br>Artesia, New Mexico 88210<br>Phone (505)-748-1471 |

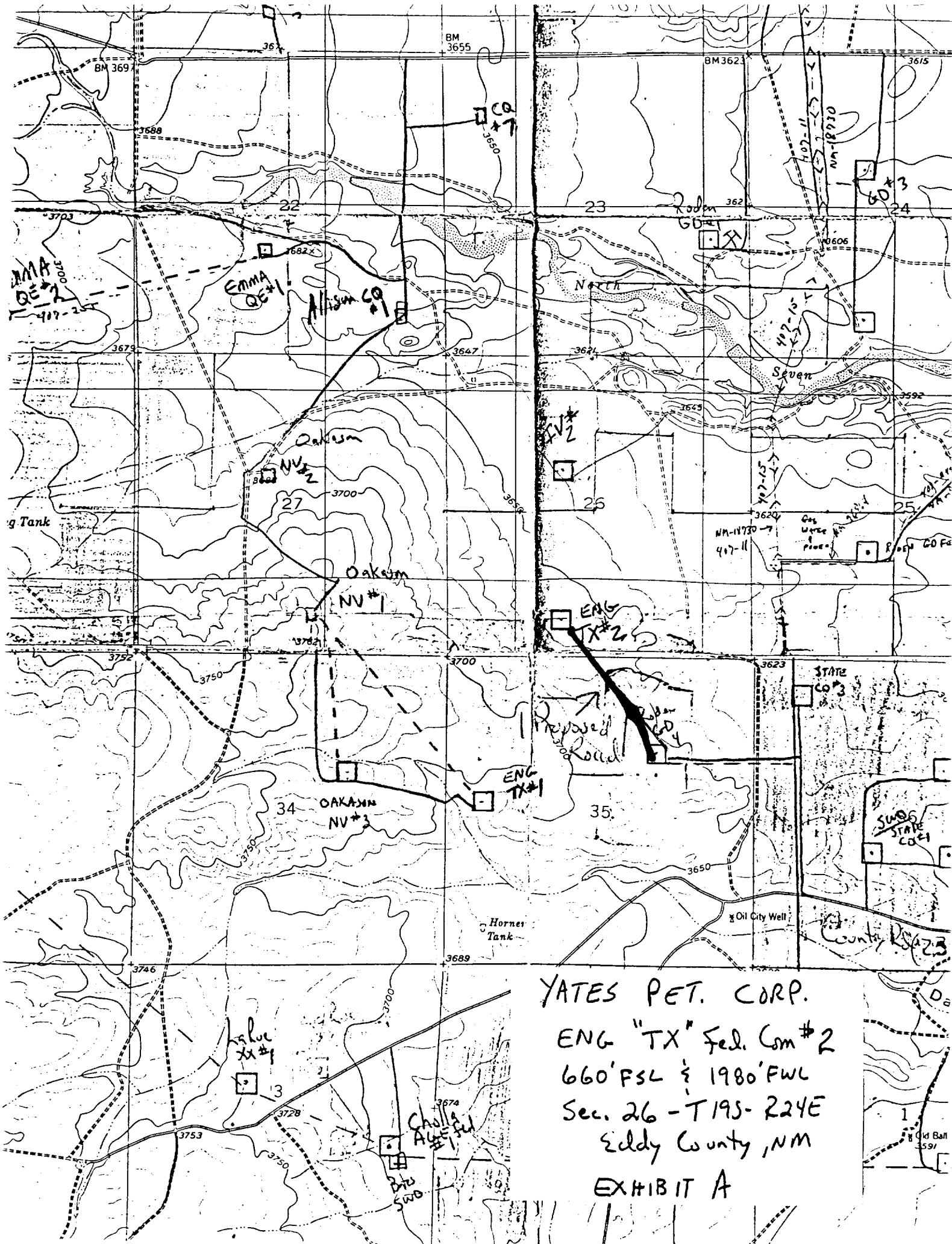
14. CERTIFICATION:

I hereby certify that I, or persons under my direct supervision, have inspected the proposed drillsite and access route, that I am familiar with the conditions which presently exist; that the statements made in this plan are to the best of my knowledge, true and correct; and, that the work associated with the operations proposed herein will be performed by Yates Petroleum Corporation and its contractors and subcontractors in conformity with this plan and the terms and conditions under which it is approved. This statement is subject to the provisions of 18 U.S.C. 1001 for the filing of a false statement.

Date

8-23-89

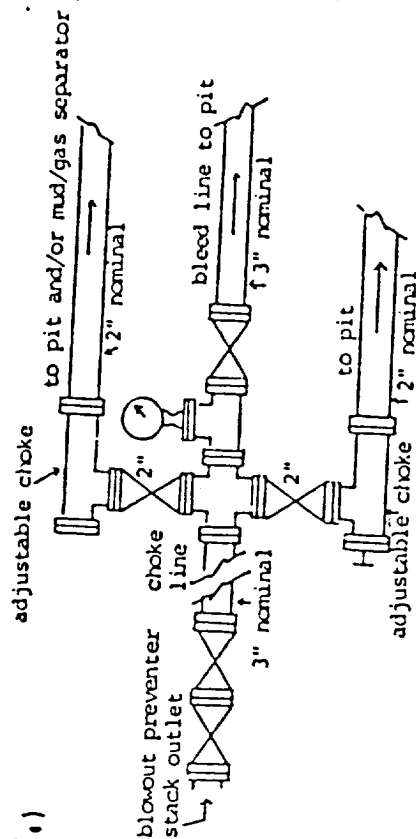
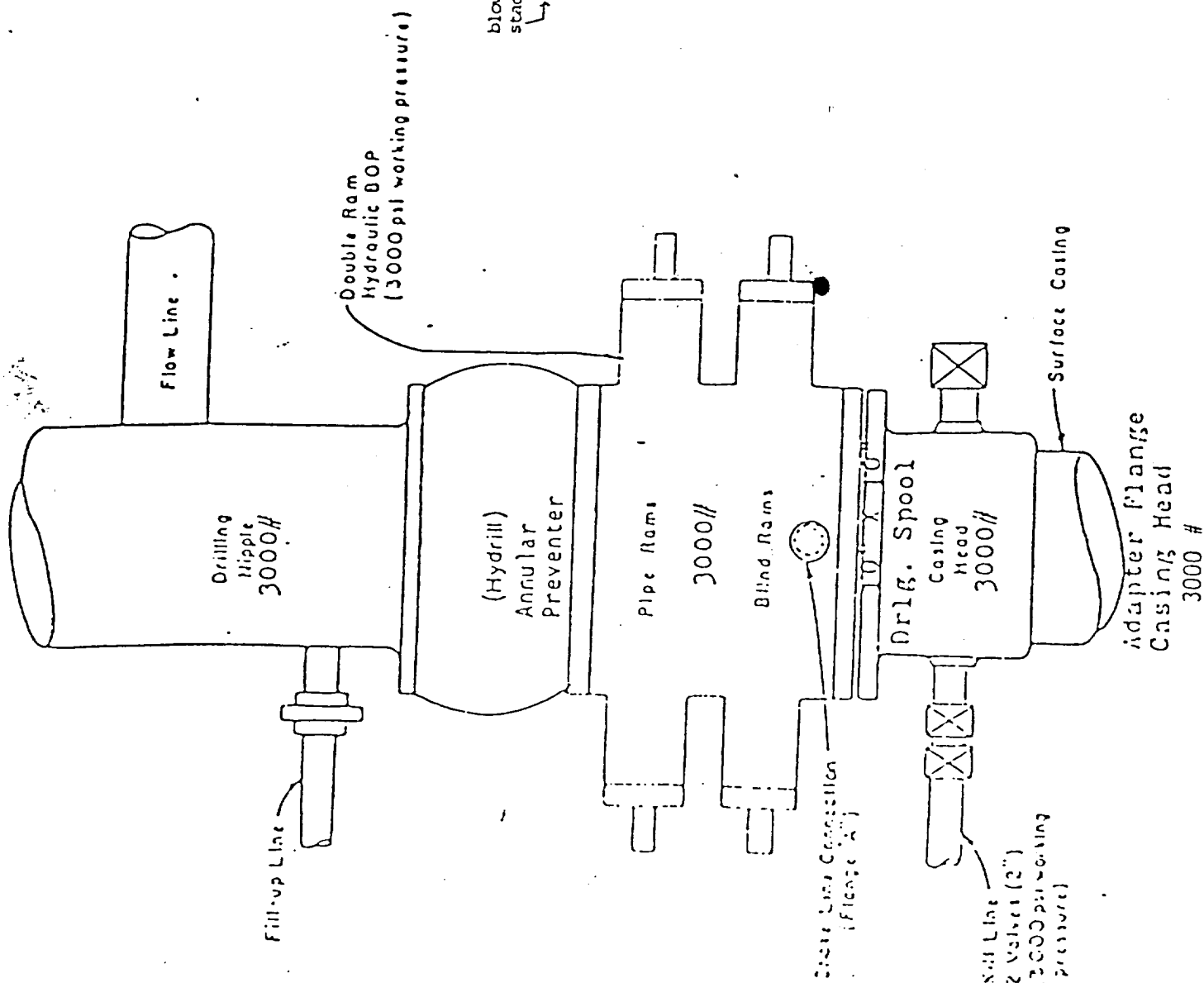
Ken Beardemphl  
Landman





# EXHIBIT "B"

## Blowout Preventer Diagram



typical choke manifold assembly for 3k rated working pressure service-surface installation

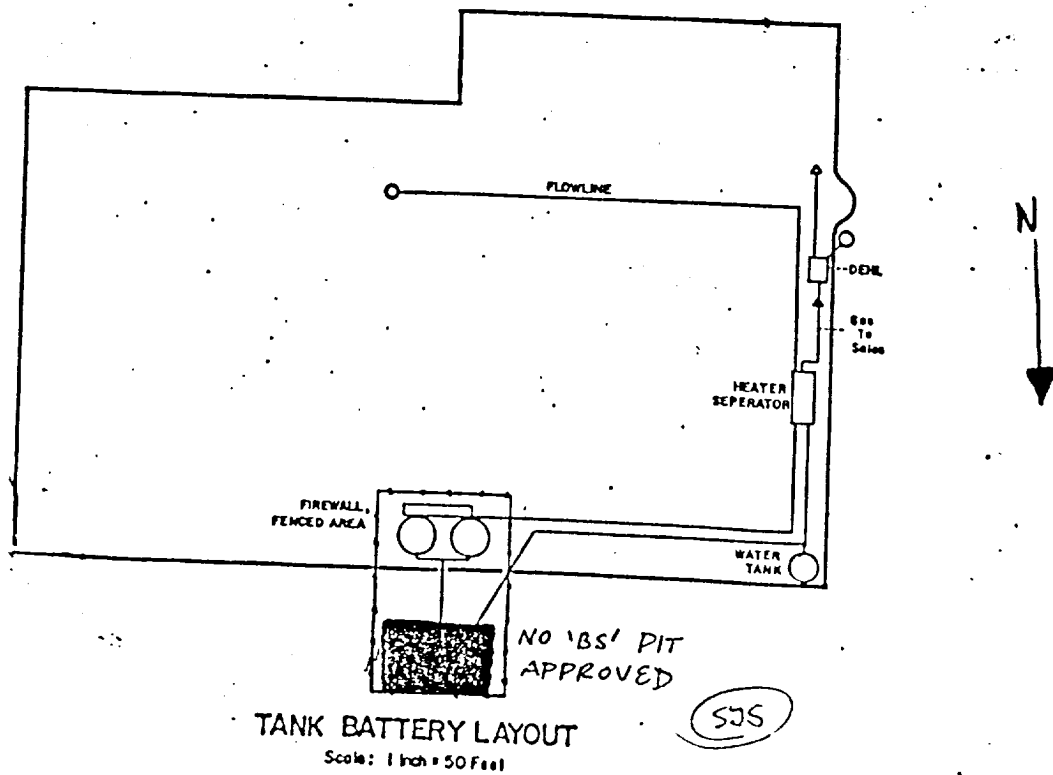
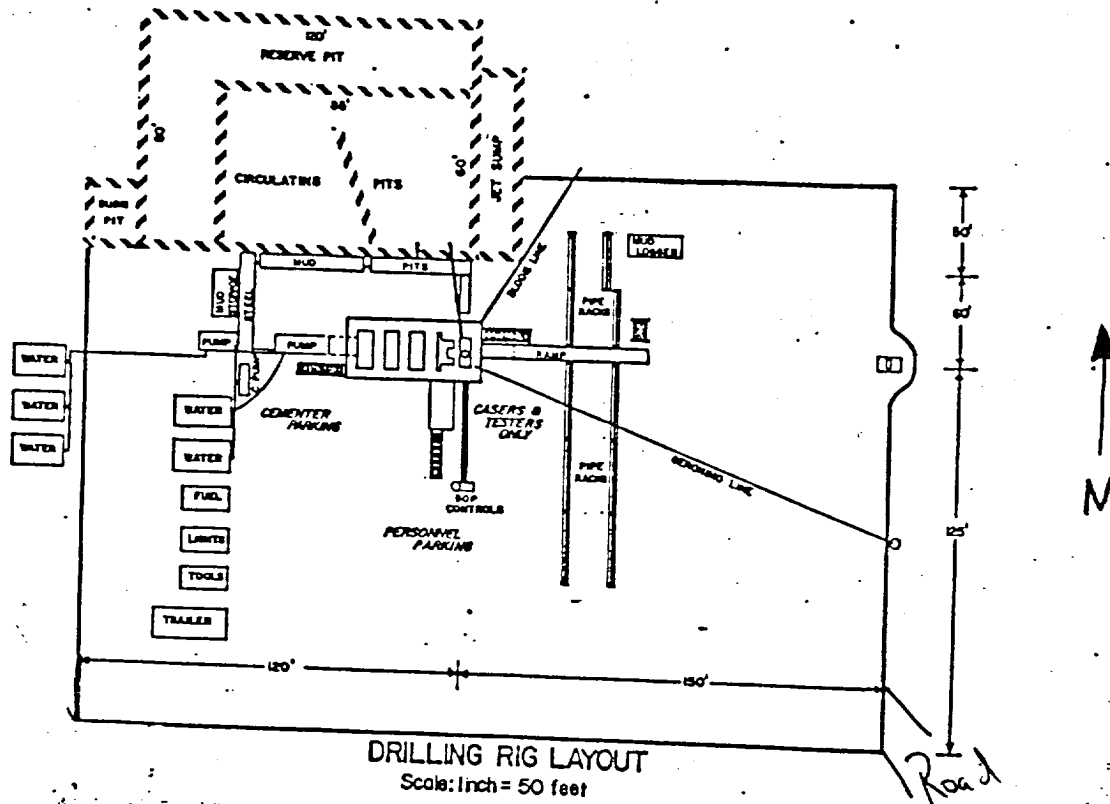


EXHIBIT C

