

UNITED STATES  
DEPARTMENT OF THE INTERIOR  
BUREAU OF LAND MANAGEMENT

CONTACT RECEIVING  
OFFICE FOR MNR  
OF COPIES REQUIRED  
(Other instructions on  
reverse side)

30-015-26271  
BLM Roswell District  
Modified Form No.  
NMD60-3160-2

**APPLICATION FOR PERMIT TO DRILL, DEEPEN, OR PLUG BACK**

1a. TYPE OF WORK  
DRILL ☒ DEEPEN ☐ PLUG BACK ☐

b. TYPE OF WELL  
OIL WELL ☒ GAS WELL ☐ OTHER ☐

2. NAME OF OPERATOR  
Siete Oil and Gas Corporation

3a. Area Code & Phone No.  
(505)622-2202

3. ADDRESS OF OPERATOR  
P.O. Box 2523 Roswell, NM 88202-2523

4. LOCATION OF WELL (Report location clearly and in accordance with any State requirements.)  
At surface 1650' FNL & 2310' FWL  
At proposed prod. zone Same

14. DISTANCE IN MILES AND DIRECTION FROM NEAREST TOWN OR POST OFFICE\*  
17 miles NE of Carlsbad, NM

16. NO. OF ACRES IN LEASE  
1320

17. NO. OF ACRES ASSIGNED TO THIS WELL  
40

19. PROPOSED DEPTH  
9500'

20. ROTARY OR CABLE TOOLS  
Rotary

21. ELEVATIONS (Show whether DF, RT, GR, etc.)  
3302' GR

22. APPROX. DATE WORK WILL START\*  
ASAP

RECEIVED  
JAN - 8 '90  
O. C. D.  
ARTESIA, OFFICE

PROPOSED CASING AND CEMENTING PROGRAM

HOLE SIZE	CASING SIZE	WEIGHT/FOOT	GRADE	THREAD TYPE	SETTING DEPTH	QUANTITY OF CEMENT
2 26"	20"	94#	J-55	8rd	350'	350 sxs circ
17 1/2"	13 3/8"	54#	J-55	8rd	1150'	500 sxs circ
12 1/4"	8 5/8"	24# & 32#	J-55	8rd	3200'	1000 sxs circ
7 7/8"	5 1/2"	20# & 17#	J-55 & N-80	8rd	9500'	1500 sxs

\*FW mud shall be used while drilling the Capitan Reef interval. (SJS)

Selectively perforate and treat pay zones.

Attachments:

Survey plat (C-102)  
Supplemental drilling data  
Surface use plan

APPROVAL SUBJECT TO  
COMPLETION OF COMMENTS AND  
SPECIAL CONSIDERATIONS  
ATTACHED

RECEIVED  
Postfiled ID  
API, NL  
1-12-90

IN ABOVE SPACE DESCRIBE PROPOSED PROGRAM: If proposal is to deepen or plug back, give data on present productive zone and proposed new productive zone. If proposal is to drill or deepen directionally, give pertinent data on subsurface locations and measured and true vertical depths. Give blowout preventer program, if any.

24. SIGNED Cathy Batley TITLE Drlg. & Prod. Tech. DATE 12/15/89

(This space for Federal or State office use)

PERMIT NO. \_\_\_\_\_ APPROVAL DATE \_\_\_\_\_

APPROVED BY \_\_\_\_\_ TITLE \_\_\_\_\_ DATE 1-5-90

CONDITIONS OF APPROVAL, IF ANY: \_\_\_\_\_

\*See Instructions On Reverse Side

**NEW MEXICO OIL CONSERVATION COMMISSION  
WELL LOCATION AND ACREAGE DEDICATION PLAT**

Form C-102  
Supersedes C-128  
Effective 1-1-65

All distances must be from the outer boundaries of the Section.

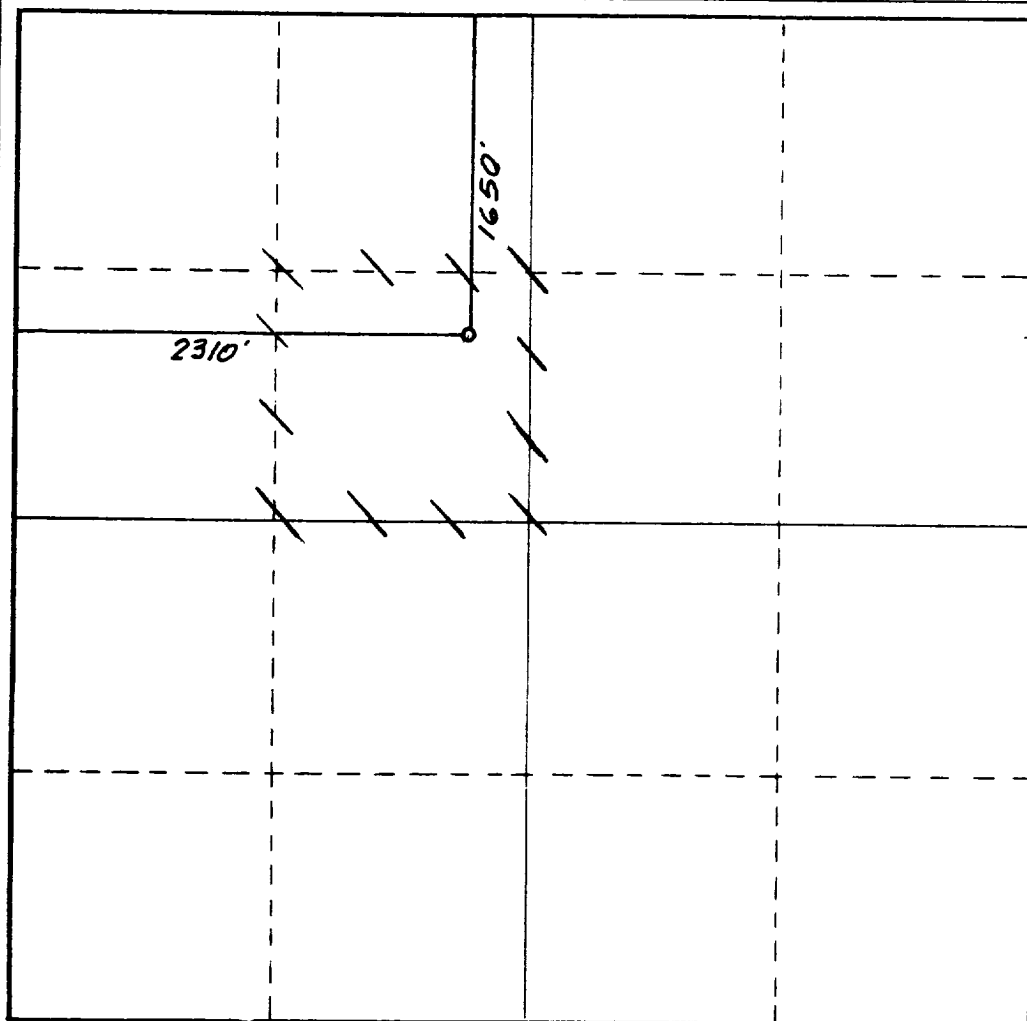
Operator <b>SIETE OIL &amp; GAS CORPORATION</b>			Lease <b>Osage Federal</b>		Well No. <b>15</b>
Unit Letter <b>F</b>	Section <b>34</b>	Township <b>19 South</b>	Range <b>29 East</b>	County <b>Eddy County, New Mexico</b>	
Actual Footage Location of Well: <b>1650</b> feet from the <b>North</b> line and <b>2310</b> feet from the <b>West</b> line					
Ground Level Elev. <b>3302.</b>	Producing Formation <b>Bone Spring</b>	Pool <b>Undesignated</b>		Dedicated Acreage: <b>40</b> Acres	

1. Outline the acreage dedicated to the subject well by colored pencil or hatchure marks on the plat below.
2. If more than one lease is dedicated to the well, outline each and identify the ownership thereof (both as to working interest and royalty).
3. If more than one lease of different ownership is dedicated to the well, have the interests of all owners been consolidated by communitization, unitization, force-pooling, etc?

☐ Yes    ☐ No    If answer is "yes," type of consolidation \_\_\_\_\_

If answer is "no," list the owners and tract descriptions which have actually been consolidated. (Use reverse side of this form if necessary.) \_\_\_\_\_

No allowable will be assigned to the well until all interests have been consolidated (by communitization, unitization, forced-pooling, or otherwise) or until a non-standard unit, eliminating such interests, has been approved by the Commission.



**CERTIFICATION**

I hereby certify that the information contained herein is true and complete to the best of my knowledge and belief.

**Harold D. Justice**

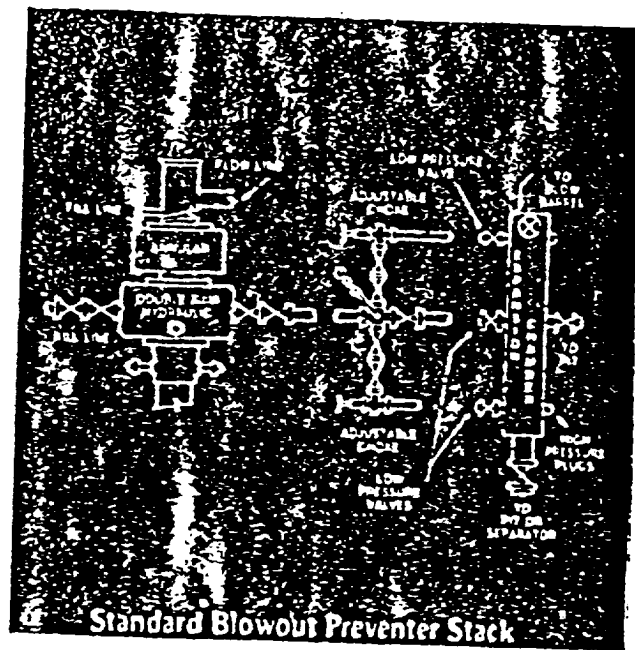
Name  
**V.P. Drilling & Production**  
Position  
**Siete Oil & Gas Corporation**  
Company  
**December 15, 1989**  
Date

I hereby certify that the well location shown on this plat was plotted from field notes of actual surveys made by me or under my supervision, and that the same is true and correct to the best of my knowledge and belief.

Date Surveyed  
**September 29, 1989**  
Registered Professional Engineer  
and/or Land Surveyor

*Dan R. Reddy*  
Certificate No.

**NM PE&LS NO. 5412**



One hydraulic double 10" X 900 series.  
 One Hydril 10" X 900 series.  
 Choke manifold 4" X 900 series flanged  
 connections. 4 valve accumulator closing  
 unit.

**SUPPLEMENTAL DRILLING DATA**  
**SIETE OIL AND GAS CORPORATION**  
**OSAGE FEDERAL #15**  
**1650' FNL & 2310' FWL**  
**Section 34: T19S, R29E**  
**Eddy County, New Mexico**  
**Lease Number: NM-24160**

The following items supplement "Onshore Oil and Gas Order No. 1":

1. The geologic surface is quaternary.
2. The estimated geological marker tops:

B/Salt	925'
Queen	2500'
Del. Sand	3390'
T/Bone Spring	5650'

3. Estimated depths to water, oil or gas:

Water: Approximately 220'

Oil or Gas: 9300'

4. Proposed casing program:

<u>Size</u>	<u>Interval</u>	<u>Weight</u>	<u>Grade</u>	<u>Joint</u>	<u>New or Used</u>
20	0 - 350'	94#	J-55	LT&C	New
13 3/8	0 - 1150'	54#	J-55	LT&C	New
8 5/8	0 - 3200'	24# & 32#	J-55	LT&C	New
5 1/2	0 - T.D.	17#	J-55	LT&C	New

5. Pressure Control Equipment: The blowout preventer will be a double ram type preventer. A sketch is attached.
6. Mud Program:
  - 0-350': Native mud adding gel and lime for sufficient viscosity to insure clean hole for running casing.
  - 350'-3200': Cut Brine.
  - 3200'-T.D.: Drill out with native becoming brine, add starch and salt gel to maintain a viscosity of 30, @ T.D. 40; mud weight 9.3#.
7. Auxiliary Equipment: A kelly cock will be installed on the rig floor while drilling operations are in progress.
8. Testing, Logging and Coring Programs: Possible drill stem tests and/or coring is not planned.  
 Logging: Compensated Neutron - Formation Density - Gamma Ray - Caliper Dual Laterolog - RXO.
9. No abnormal pressures or temperature zones are anticipated.
10. Anticipated starting date: Commence drilling operations ASAP.

**SURFACE USE PLAN**

**FOR  
DRILLING, COMPLETING AND PRODUCING**

**SIETE OIL AND GAS CORPORATION  
Osage Federal No. 15  
1650' FNL & 2310' FWL  
Section 34: T19S, R29E  
Eddy County, New Mexico  
Lease Number: NM-24160**

LOCATED: 17 miles Northeast of Carlsbad, New Mexico

FEDERAL LEASE NUMBER: NM-24160

LEASE ISSUED: February 1, 1975

RECORD LESSEE: Conoco, Inc.

BOND COVERAGE: \$25,000 Bond of Siete Oil and Gas Operator

ACRES IN LEASE: 1320

SURFACE OWNERSHIP: Federal

GRAZING PERMITTEE: Snyder Ranches  
C/O Larry Squires  
P.O. Box 726  
Lovington, NM 88260  
Telephone: 393-7544

POOL: Undesignated Bone Spring

EXHIBITS:

- A. Area Road Map
- B. Topographic Map Showing Access Route
- C. Lease Map Showing Well Tests
- D. Sketch of Well Pad

ROAD LOG TO PROPOSED DRILLSITE

Starting point being Pecos River Bridge - Carlsbad, New Mexico on Highway 62-180:

- 0.00      Proceed East - Northeast on Highway 62-180 for 13.5 miles.
- 13.50      Turn North (4/10 mile past mile marker 40) on County Road 238 and proceed North for 2.1 miles (end of County Road North).
- 15.60      Proceed North off County Road (Conoco - Tuesday Federal sign) and go 4.7 miles (.2 mile North of Osage Federal No. 8).
- 20.30      Turn West & go .2 mile.
- 20.50      Location.

## THIRTEEN POINT PROGRAM

### 1. EXISTING ROADS:

- A. Existing roads, which lead to the proposed drillsite, are shown on Exhibits "A" & "B".

### 2. PROPOSED NEW ROAD:

- A. The new access road will be 14' wide by approximately .2 mile in length. New access road will enter the Southeast corner of the location as displayed on Exhibit "B".
- B. Surfacing Materials: Caliche
- C. Maximum Grade: Less than 1%
- D. Turnouts: None required
- E. Drainage Design: None required
- F. Culverts: None required
- G. Cuts and Fills: Less than 3'
- H. Gates, Cattleguards: None required

### 3. LOCATION OF EXISTING WELLS:

- A. Existing wells are shown on Exhibit "C".

### 4. LOCATION OF EXISTING AND/OR PROPOSED FACILITIES:

- A. If the well is productive, we will construct a flowline parallel with the access road to tank battery on the Osage Federal No. 8 (SW $\frac{1}{4}$ NE $\frac{1}{4}$ ).

### 5. LOCATION AND TYPE OF WATER SUPPLY:

- A. A water supply well is not planned. Water will be purchased and hauled to the well site over existing and proposed roads.

### 6. SOURCE OF CONSTRUCTION MATERIALS

- A. Construction material will be obtained from an existing federal pit in the SW $\frac{1}{4}$ NE $\frac{1}{4}$  of Section 3: T20S, R29E.

### 7. METHODS OF HANDLING WASTE DISPOSAL:

- A. Drill cuttings will be disposed of in the drilling pits.
- B. Drilling fluids will be allowed to evaporate in the drilling pits until the pits are dry.
- C. Water produced during tests will be disposed of in the drilling pits.
- D. Oil produced during tests will be produced into temporary test tanks.

- E. Trash, waste paper, garbage and junk will be buried in a trash pit and covered with a minimum of 24" of dirt. All waste material will be contained to prevent scattering by the wind. Location of the trash pit is shown on Exhibit "D".

8. ANCILLARY FACILITIES:

- A. If the well is found to be productive, a powerline will be built from the Osage Federal No. 8 (SW $\frac{1}{4}$ NE $\frac{1}{4}$ ) following lease road R/W to location.

9. WELLSITE LAYOUT:

- A. The drill site has been surveyed, staked and flagged.
- B. The dimensions and relative location of the drill pad, mud pits and the trash pits with respect to the wellbore are shown on Exhibit "D".
- C. The wellsite is nearly level and will not require any cut or fill. The drill pad will be surfaced with caliche.

10. PLANS FOR RESTORATION OF THE SURFACE:

- A. After completion of drilling and/or completion operations, all equipment and other materials not needed for operations will be removed. Pits will be filled and the location cleansed of all trash and junk to leave the wellsite in an aesthetically pleasing condition as possible.
- B. Any unguarded pits containing fluids will be fenced until they are filled.
- C. After abandonment, all equipment, trash and junk will be removed and the location cleaned. Any special rehabilitation and/or special revegetation requirements of the surface management agency will be complied with and accomplished as expeditiously as possible.

11. OTHER INFORMATION:

- A. Topography: The Surface is relatively flat. Drainage to the Southwest.
- B. Soil: Kermit Berino fine sands.
- C. Flora and Fauna: Vicinity surrounding the drillsite is semi-arid desert rangeland. Vegetation is thinly scattered with desert shrubs interspersed with a small amount of native grasses. No wildlife was observed, rodents, coyotes, dove or quail.
- D. Ponds and Streams: None
- E. Residences and other Structures: None in the immediate area.
- F. Archaeological, Historical and Other Cultural Sites: None were observed in this area. The pad area was archaeologized on September 29, 1989.
- G. Land Use: Grazing and occasional hunting.



12. OPERATOR'S REPRESENTATIVE:

Representative responsible for assuring compliance with the approved Surface Use Plan:

Harold D. Justice  
Petroleum Building, Suite 200  
200 West First  
Roswell, New Mexico 88202  
Office: 622-2202  
Home: 625-0072

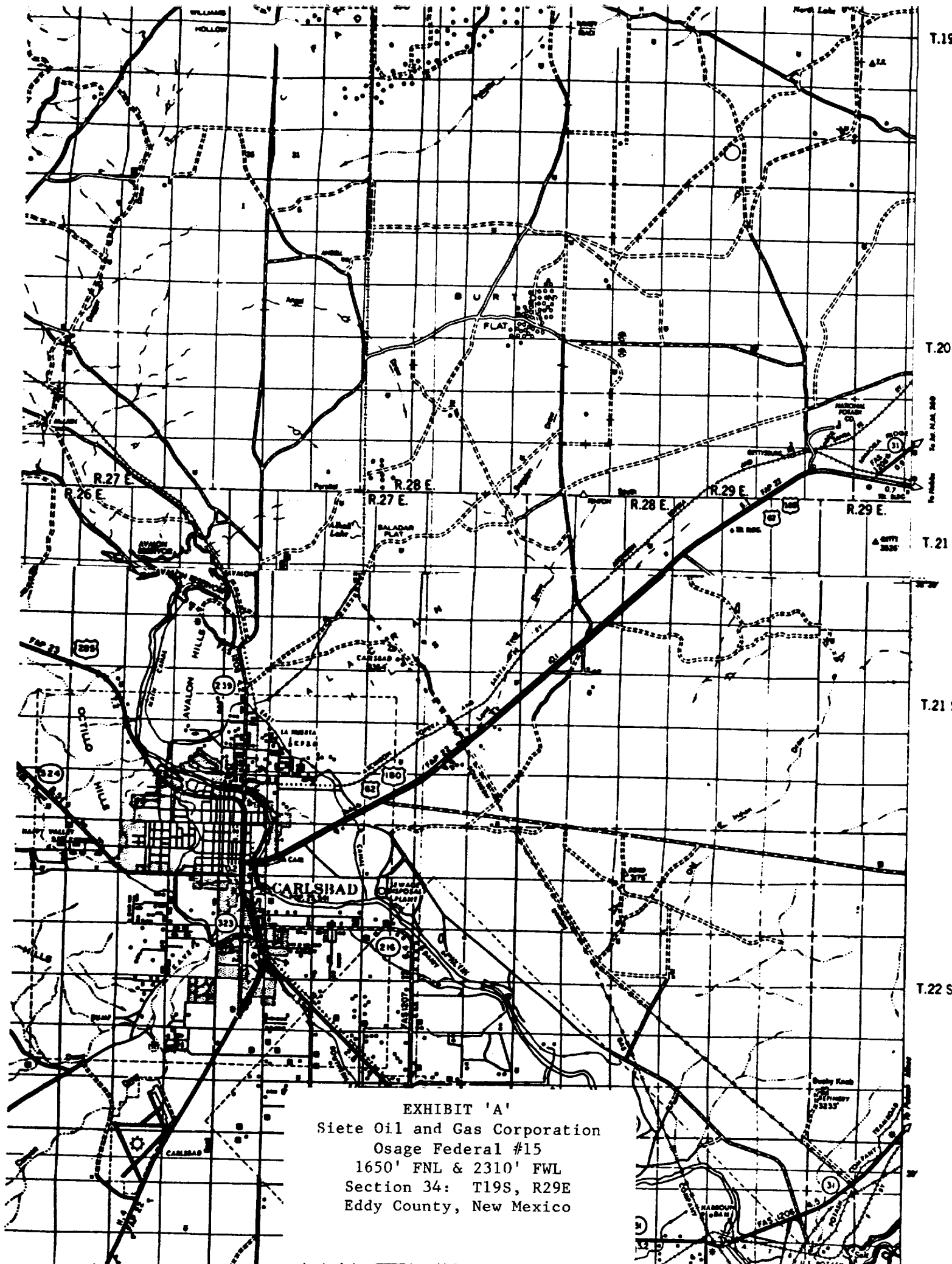
13. CERTIFICATION:

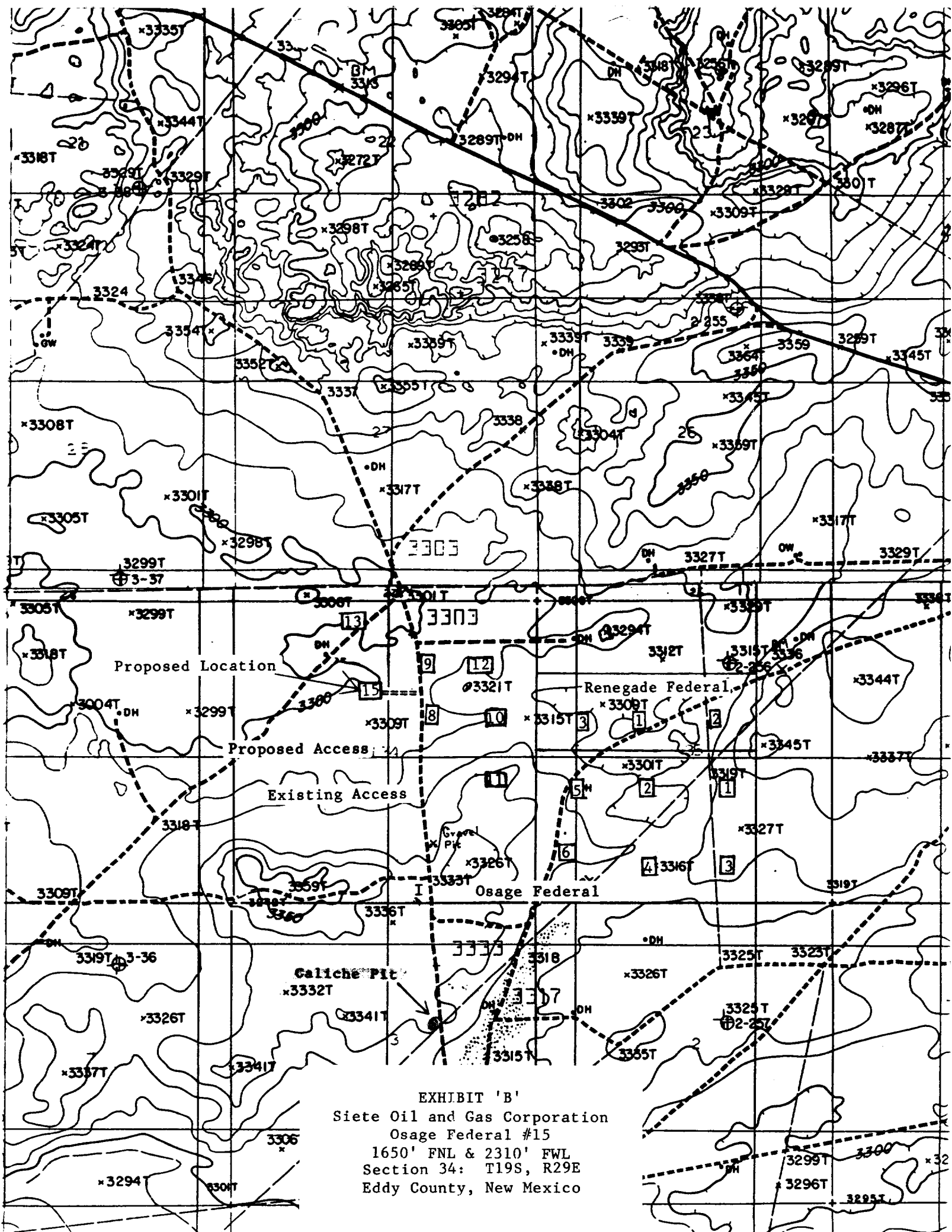
I hereby certify that I, or persons under my supervision have inspected the proposed drillsite and access road; that I am familiar with the conditions which presently exist; that the statements made in this plan are, to the best of my knowledge true and correct; and that the work associated with operations proposed herein will be performed by SIETE OIL AND GAS CORPORATION, and its subcontractors in conformity with this plan and the terms and conditions under which it is approved.

**SIETE OIL AND GAS CORPORATION**

Date: 12/15/89

BY: Harold D. Justice CB  
Harold D. Justice  
V.P. Drilling & Production





3162

PARKWAY, W.

**PARKWAY, WEST UNIT**

Petco  
 10  
 MBU  
 4329  
 35

H. E. Chiles, et al  
 21 sec.  
 State

WWE'S

Microtham [B.H. Cobb] Domin-

EXHIBIT 'Siete Oil and Gas

Usage Federal  
1650' FNL & 23  
Section 34: Tl

Eddy County, Ne

EXHIBIT 'C'  
Siete Oil and Gas Corporation  
Osage Federal #15  
1650' FNL & 2310' FWL  
Section 34: T19S, R29E  
Eddy County, New Mexico

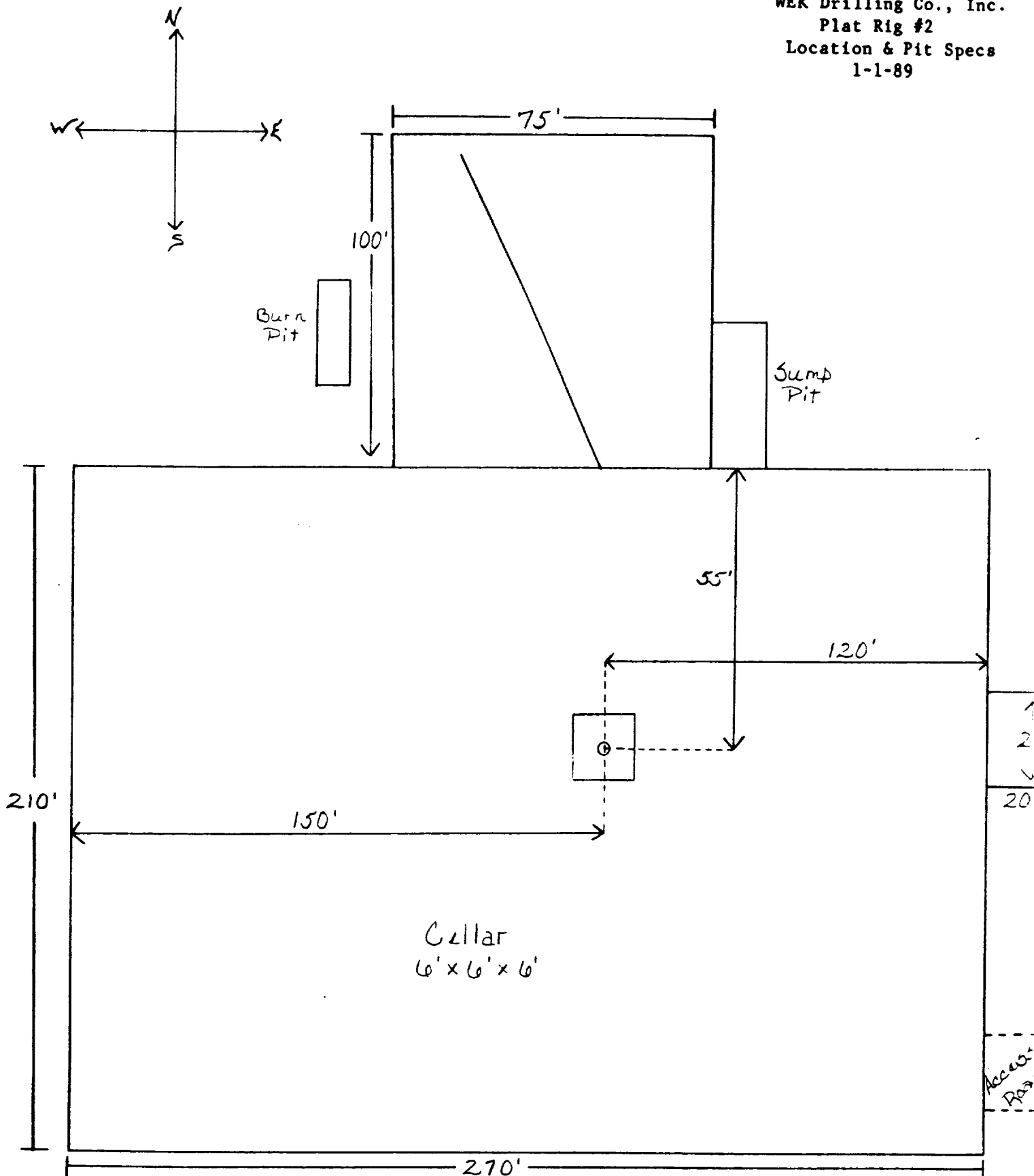


EXHIBIT 'D'  
 Siete Oil and Gas Corporation  
 Osage Federal #15  
 1650' FNL & 2310' FWL  
 Section 34: T19S, R29E  
 Eddy County, New Mexico