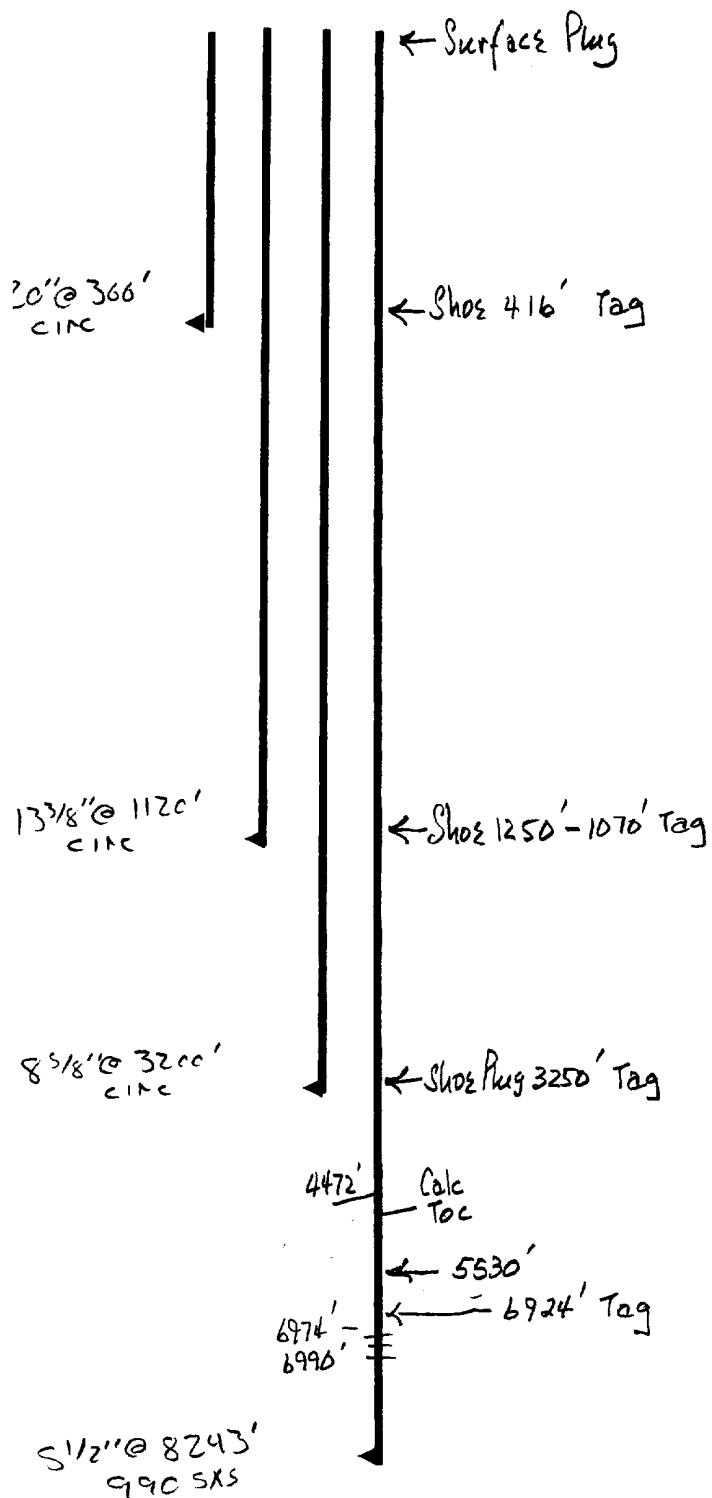


Operator St. Mary Land Exptl. Company
 Well Osage Federal #17
 Unit K Section 34 Township 19 Range 29
 API # 30-015-26298

TOPS

Salado	385'
Base Salt	~ 1150'
Gates	1275'
Miners	1470'
Deltaware	3448'
Base Spring	5530'

Capitan Reef ~ 1650'



- * Contact OCD 24 hrs. prior to any work done.
- * Salt gel mud consisting of 10# brine with 25# of gel per barrel must be placed between each plug.
- * Install dry hole marker as per Rule 202.B.2
- * Plugs are to be set from point indicated up.
- * Plugs must not be less than 100' or 25 Sacks of cement, whichever is greater, unless specifically indicated.
- * Shoe and stub plugs will be 50' above and below shoe or stub and tagged.
- * Surface plug will be from 0' - 60'
- * Where plugs are required, cement must be placed inside and outside of all casing string(s) in the correct footage or sacks required, if no cement exists.
- * Plugs to be tagged will be indicated.

10.

District II

811 South First, Artesia, NM 88210

District III

1000 Rio Brazos Rd., Aztec, NM 87410

District IV

2040 South Pacheco, Santa Fe, NM 87505

OIL CONSERVATION DIVISION
2040 South Pacheco
Santa Fe, NM 87505Instructions on back
Submit to Appropriate District Office
5 Copies☐ AMENDED REPORT

I. REQUEST FOR ALLOWABLE AND AUTHORIZATION TO TRANSPORT

Operator name and Address St. Mary Land & Exploration Co. c/o Coastal Management Corporation P. O. Box 2726 Midland, TX 79702		OGRID Number 154903
		Reason for Filing Code CO (effective 12/1/96)
API Number 30 - 0 15-26298	Pool Name Parkway Delaware	Pool Code 49625
Property Code 19267	Property Name Osage Federal	Well Number 17

II. Surface Location

UL or lot no. K	Section 34	Township 19S	Range 29E	Lot Idn	Feet from the 2310	North/South Line South	Feet from the 2310	East/West line West	County Eddy
--------------------	---------------	-----------------	--------------	---------	-----------------------	---------------------------	-----------------------	------------------------	----------------

Bottom Hole Location

UL or lot no. K	Section 34	Township 19S	Range 29E	Lot Idn	Feet from the 2310	North/South line South	Feet from the 2310	East/West line West	County Eddy
Use Code F	Producing Method Code P	Gas Connection Date	C-129 Permit Number	C-129 Effective Date	C-129 Expiration Date				

III. Oil and Gas Transporters

Transporter OGRID	Transporter Name and Address	POD	O/G	POD ULSTR Location and Description
007440	EOTT Energy Operating Ltd P/S P. O. Box 4666 Houston, TX 77210-4660	2269610	O	Same as Surface Location
36785	Associated Natural Gas Inc. P.O. Box 5493 Denver, CO 80217	2269630	G	Same as Surface Location

RECEIVED

NOV 19 1996

IV. Produced Water

POD 2269650	POD ULSTR Location and Description Same as Surface Location
----------------	--

V. Well Completion Data

Spud Date	Ready Date	TD	PBTD	Perforations	DHC, DC, MC
Hole Size	Casing & Tubing Size	Depth Set	Sacks Cement		

VI. Well Test Data

Date New Oil	Gas Delivery Date	Test Date	Test Length	Tbg. Pressure	Csg. Pressure
Choke Size	Oil	Water	Gas	AOF	Test Method

I hereby certify that the rules of the Oil Conservation Division have been complied with and that the information given above is true and complete to the best of my knowledge and belief.

Signature:

Linda Johnston

Printed name:

Linda Johnston

Title:

Agent

Date:

11/14/96

Phone(915) 694-8228

OIL CONSERVATION DIVISION

Approved by:

SUPERVISOR, DISTRICT II

Title:

Approval Date:

DEC 11 1996

If this is a change of operator fill in the OGRID number and name of the previous operator

Previous Operator Signature

Printed Name

Title

Date