

NE EXICO OIL CONSERVATION COMMISSION
WELL LOCATION AND ACREAGE DEDICATION PLAT

Form C-102
Supersedes C-128
Effective 1-1-65

All distances must be from the outer boundaries of the Section.

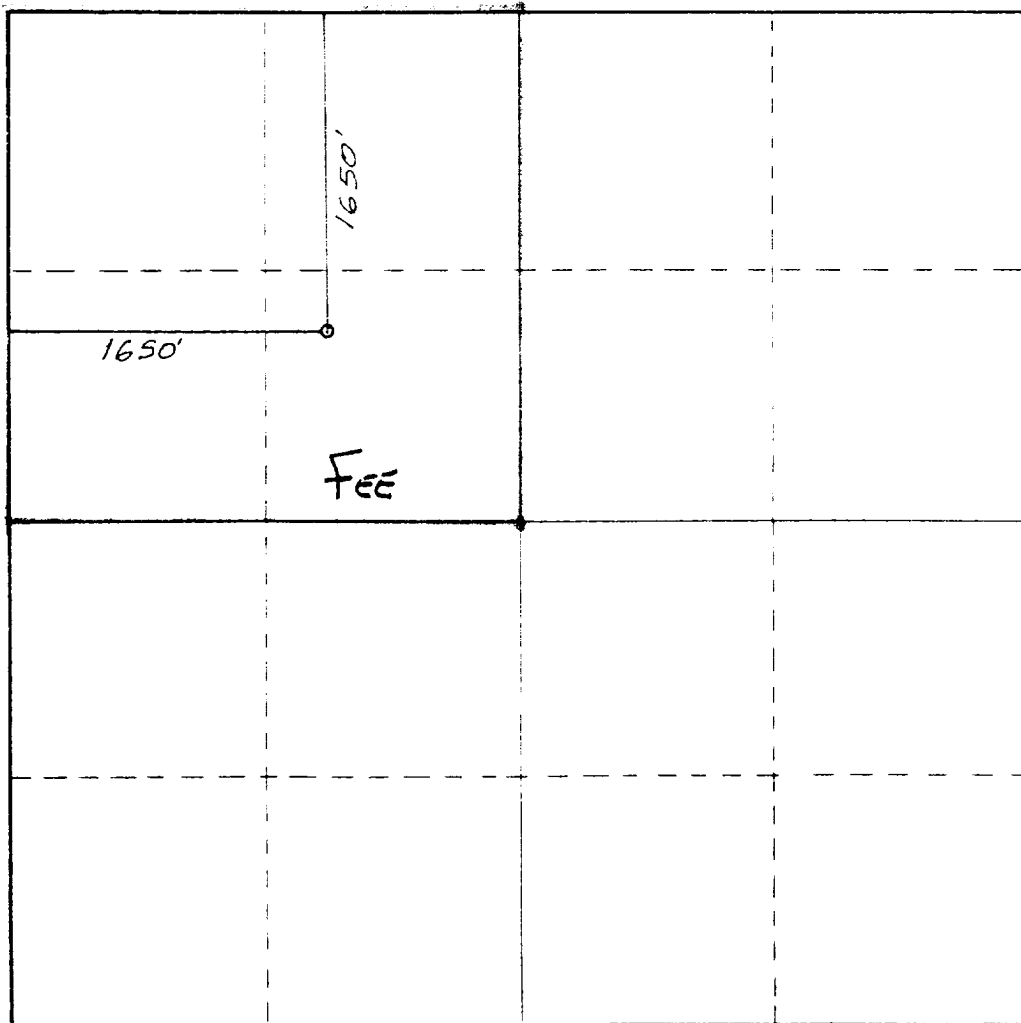
Operator YATES PETROLEUM CORPORATION		Lease Cooper AHH		Well No. 1
Unit Letter F	Section 1	Township 20 South	Range 24 East	County Eddy County, N.M.
Actual Footage Location of Well: 1650 feet from the North line and 1650 feet from the West line				
Ground Level Elev. 3610.	Producing Formation Cisco Canyon	Pool North Dagger Draw Upper Penn.	Dedicated Acreage: 160 Acres	

1. Outline the acreage dedicated to the subject well by colored pencil or hachure marks on the plat below.
2. If more than one lease is dedicated to the well, outline each and identify the ownership thereof (both as to working interest and royalty).
3. If more than one lease of different ownership is dedicated to the well, have the interests of all owners been consolidated by communitization, unitization, force-pooling, etc?

☐ Yes ☐ No If answer is "yes," type of consolidation _____

If answer is "no," list the owners and tract descriptions which have actually been consolidated. (Use reverse side of this form if necessary.) _____

No allowable will be assigned to the well until all interests have been consolidated (by communitization, unitization, forced-pooling, or otherwise) or until a non-standard unit, eliminating such interests, has been approved by the Commission.



CERTIFICATION

I hereby certify that the information contained herein is true and complete to the best of my knowledge and belief.

Ken Beardemphl
Name

Ken Beardemphl
Position

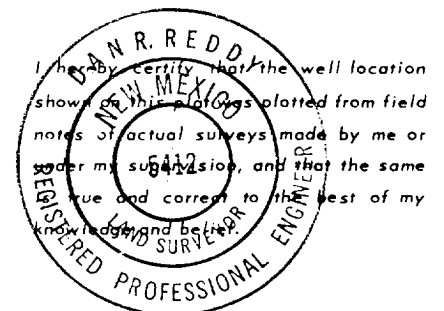
Landman

Company

Yates Petroleum Corporation

Date

March 12, 1990



Date Surveyed

March 8, 1990

Registered Professional Engineer
and/or Land Surveyor

Dan R. Reddy
Certificate No.

NM PE&LS NO. 5412

0 330 660 990 1320 1650 1980 2310 2640 2000 1500 1000 500 0