

UNITED STATES
DEPARTMENT OF THE INTERIOR
BUREAU OF LAND MANAGEMENT

SUBMIT IN TR DATE
(Other instructions on reverse side)

30-015-26427
Form approved.
Budget Bureau No. 1004-0136
Expires August 31, 1985

APPLICATION FOR PERMIT TO DRILL, DEEPEN, OR PLUG BACK

1a. TYPE OF WORK
DRILL ☒ DEEPEN ☐ PLUG BACK ☐

b. TYPE OF WELL
OIL WELL ☐ GAS WELL ☒ OTHER ☐

2. NAME OF OPERATOR
Yates Petroleum Corporation ✓

3. ADDRESS OF OPERATOR
105 South Fourth Street, Artesia, New Mexico 88210

4. LOCATION OF WELL (Report location clearly and in accordance with any State requirements.)
At surface 660' FNL and 2105' FWL
At proposed prod. zone same

14. DISTANCE IN MILES AND DIRECTION FROM NEAREST TOWN OR POST OFFICE*
Approximately 28 miles southwest of Artesia, New Mexico

15. DISTANCE FROM PROPOSED* LOCATION TO NEAREST PROPERTY OR LEASE LINE, FT. (Also to nearest drlg. unit line, if any)
16. NO. OF ACRES IN LEASE
17. NO. OF ACRES ASSIGNED TO THIS WELL

18. DISTANCE FROM PROPOSED LOCATION* TO NEAREST WELL, DRILLING, COMPLETED, OR APPLIED FOR, ON THIS LEASE, FT.
19. PROPOSED DEPTH
20. ROTARY OR CABLE TOOLS

21. ELEVATIONS (Show whether DF, RT, GR, etc.)
2765' GR: 3770'

22. APPROX. DATE WORK WILL START*

PROPOSED CASING AND CEMENTING PROGRAM

SIZE OF HOLE	SIZE OF CASING	WEIGHT PER FOOT	SETTING DEPTH	QUANTITY OF CEMENT
14-3/4"	9-5/8"	36# J-55	1200'	1000 sx circulated
8-3/4"	7"	23 & 26# J-55	TD	As warranted-SEE STIPS.

We propose to drill and test the Morrow and intermediate formations. Approximately 1200' of surface casing will be set and cement circulated to shut off gravel and cavings. If commercial, production casing will be ran and cemented, will perforate and stimulate as needed for production.

MUD PROGRAM: FW/Gel LCM to 1200'; FW to 3400'; BW to 7200'; SW Gel/S to TD

BOP PROGRAM: BOP's and hydril will be installed on 9-5/8" casing and tested daily.

APPROVAL SUBJECT TO
GENERAL REQUIREMENTS AND
SPECIAL STIPULATIONS
ATTACHED

Prod ID-1
7-27-90
Newhart API

IN ABOVE SPACE DESCRIBE PROPOSED PROGRAM: If proposal is to deepen or plug back, give data on present productive zone and proposed new productive zone. If proposal is to drill or deepen directionally, give pertinent data on subsurface locations and measured and true vertical depths. Give blowout preventer program, if any.

24. SIGNED [Signature] TITLE Landman DATE 7-3-90

(This space for Federal or State office use)

PERMIT NO. APPROVAL DATE
APPROVED BY Tom Hare TITLE AREA MANAGER DATE 7-19-90
CONDITIONS OF APPROVAL, IF ANY:

*See Instructions On Reverse Side

NE.. MEXICO OIL CONSERVATION COMMISSION
WELL LOCATION AND ACREAGE DEDICATION PLAT

Form C-102
Supersedes C-128
Effective 1-1-65

All distances must be from the outer boundaries of the Section.

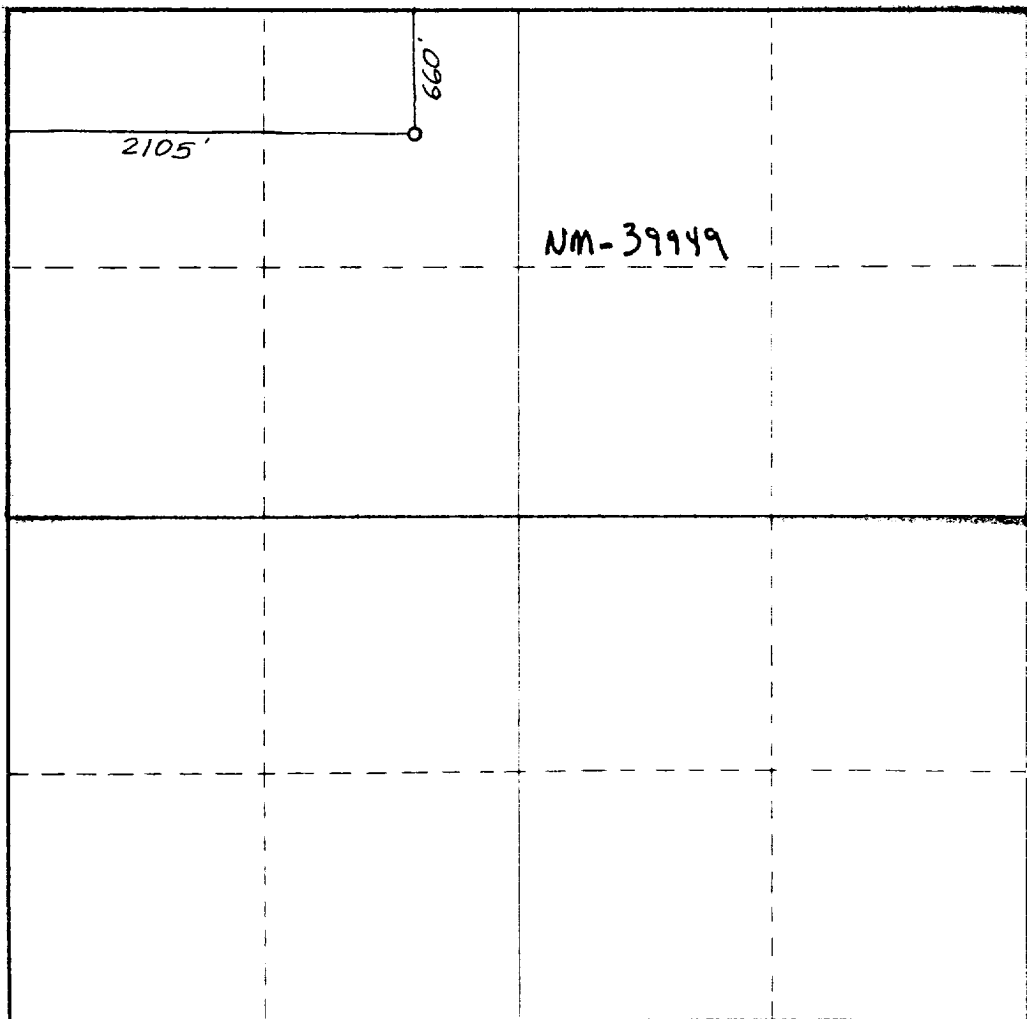
Operator YATES PETROLEUM CORPORATION			Lease ALEXANDRE AHX FEDERAL		Well No. 1
Unit Letter C	Section 33	Township 19 South	Range 24 East	County Eddy County, N.M.	
Actual Footage Location of Well: 660 feet from the North line and 2105 feet from the West line					
Ground Level Elev. 3770.	Producing Formation Morrow		Pool Und. Morrow	Dedicated Acreage: 320 Acres	

1. Outline the acreage dedicated to the subject well by colored pencil or hatchure marks on the plat below.
2. If more than one lease is dedicated to the well, outline each and identify the ownership thereof (both as to working interest and royalty).
3. If more than one lease of different ownership is dedicated to the well, have the interests of all owners been consolidated by communitization, unitization, force-pooling, etc?

☐ Yes ☒ No If answer is "yes," type of consolidation _____

If answer is "no," list the owners and tract descriptions which have actually been consolidated. (Use reverse side of this form if necessary.) _____

No allowable will be assigned to the well until all interests have been consolidated (by communitization, unitization, forced-pooling, or otherwise) or until a non-standard unit, eliminating such interests, has been approved by the Commission.



CERTIFICATION

I hereby certify that the information contained herein is true and complete to the best of my knowledge and belief.

Ken Beardman
Name
KEN BEARDMAN
Position
LANDMAN
Company
Yates Pet Corp.
Date
7-3-90

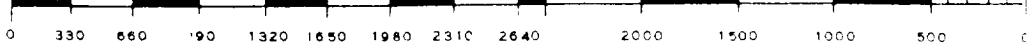
Dan R. Reddy
I hereby certify that the well location shown on this plat was plotted from field notes of actual surveys made by me or under my supervision, and that the same is true and correct to the best of my knowledge and belief.

Date Surveyed
July 3, 1990

Registered Professional Engineer
and/or Land Surveyor

Dan R. Reddy
Certificate No.

NM PE&LS NO. 5412



YATES PETROLEUM CORPORATION

Alexandre "AHX" Federal #1
660' FNL and 2105' FWL
Section 33, T19S-R24E
Eddy County, New Mexico

In conjunction with Form 3160-3, Application for Permit to Drill subject well, Yates Petroleum Corporation submits the following ten items of pertinent information in accordance with USGS requirements.

1. The geological surface formation is Alluvium.
2. The estimated tops of geologic markers are as follows:

San Andres	373'	Base Canyon Lime	7611'
Glorieta	1733'	Strawn	8014'
Abo	3767'	Atoka	8484'
Wolfcamp Lime	5065'	Morrow Clastics	8748'
"CC" Tank Zone	6328'	Chester Lime	8982'
Canyon Lime	7314'	TD	9200'
3. The estimated depths at which anticipated water, oil or gas formations are expected to be encountered:

Water: Approximately 275' to 350'

Oil or Gas: Canyon, Strawn, Morrow
4. Proposed Casing Program: See Form 3160-3.
5. Pressure Control Equipment: See Form 3160-3 and Exhibit B.
6. Mud Program: See Form 3160-3.
7. Auxiliary Equipment: Kelly Cock; pit level indicators and flow sensor equipment; sub with full-opening valve on floor, drill pipe connection.
8. Testing, Logging and Coring Program:

Samples: 10' samples from 300' depth to TD.

DST's: As warranted

Coring: None

Logging: CNL-LDT from TD to casing with GR-CNL up to surface; DLL with RxO TD to casing; LSS TD to casing.
9. No abnormal pressures or temperatures are anticipated.
10. Anticipated starting date: As soon as possible after approval.

MULTI-POINT SURFACE USE AND OPERATIONS PLAN
Yates Petroleum Corporation
Alexandre "AHX" Federal #1
660' FNL and 2105' FWL
Section 33, T19S-R24E
Eddy County, New Mexico

This plan is submitted with Form 3160-3, Application for Permit to Drill, covering the above described well. The purpose of this plan is to describe the location of the proposed well, the proposed construction activities and operations plan, the magnitude of surface disturbance involved and the procedures to be followed in rehabilitating the surface after completion of the operations, so that a complete appraisal can be made of the environmental effect associated with the operations.

1. EXISTING ROADS:

Exhibit A is a portion of BLM map showing the well and roads in the vicinity of the proposed location. The proposed wellsite is located approximately 28 miles southwest of Artesia, New Mexico and the access route to the location is indicated in red and green on Exhibit A.

DIRECTIONS:

1. Go south of Artesia on Highway 285 for approximately 15 miles to Rock Daisy Road.
2. Turn west and go approximately 12 miles and turn north after cattleguard on lease road.
3. Follow lease road for approximately 1½ miles to location.

2. PLANNED ACCESS ROAD

- A. None needed -- location on road.

3. LOCATION OF EXISTING WELL

- A. There is drilling activity within a one-mile radius of the wellsite.
B. Exhibit D shows existing wells within a one-mile radius of the proposed wellsite.

4. LOCATION OF EXISTING AND/OR PROPOSED FACILITIES:

- A. There are no production facilities on this lease at the present time.
B. In the event that the well is productive, the necessary production facilities will be installed on the drilling pad. If the well is productive oil, a gas or diesel self-contained unit will be used to provide the necessary power. No power will be required if the well is productive of gas.

5. LOCATION AND TYPE OF WATER SUPPLY:
 - A. It is planned to drill the proposed well with a fresh water system. The water will be obtained from commercial sources and will be hauled to the location by truck over the existing and proposed roads shown in Exhibit A.
6. SOURCE OF CONSTRUCTION MATERIALS:
 - A. Location should caliche itself.
7. METHODS OF HANDLING WASTE DISPOSAL:
 - A. Drill cuttings will be disposed of in the reserve pits.
 - B. Drilling fluids will be allowed to evaporate in the reserve pits until the pits are dry.
 - C. Water produced during operations will be collected in tanks until hauled to an approved disposal system, or separate disposal application will be submitted.
 - D. Oil produced during operations will be stored in tanks until sold.
 - E. Current laws and regulations pertaining to the disposal of human waste will be complied with.
 - F. Trash, waste paper, garbage and junk will be buried in a separate trash pit and covered with a minimum of 24 inches of dirt. All waste material will be contained to prevent scattering by the wind.
 - G. All trash and debris will be buried or removed from the wellsite within 30 days after finishing drilling and/or completion operations.
8. ANCILLIARY FACILITIES:
 - A. None required.
9. WELLSITE LAYOUT:
 - A. Exhibit C shows the relative location and dimensions of the well pad, the reserve pits, the location of the drilling equipment, rig orientation and access road approach. A cross section of drill pad with approximate cuts, fills and pad orientation is shown on Exhibit E.
 - B. The reserve pits will be plastic lined.
 - C. A 400' X 400' area has been staked and flagged.
10. PLANS FOR RESTORATION OF THE SURFACE:
 - A. After finishing drilling and/or completion operations, all equipment and other material not needed for further operations will be removed. The location will be cleaned of all trash and junk to leave the wellsite in as aesthetically pleasing a condition as possible.
 - B. Unguarded pits, if any, containing fluids will be fenced until they have dried and been levelled.

- C. If the proposed well is non-productive, all rehabilitation and/or vegetation requirements of the Bureau of Land Management will be complied with and will be accomplished as expeditiously as possible. All pits will be filled level within 90 days after abandonment.

11. SURFACE OWNERSHIP: Bureau of Land Management
Carlsbad Office in Carlsbad, New Mexico

12. OTHER INFORMATION:

A. Topography: Refer to the archaeological report for a description of the topography, flora, fauna, soil characteristics, dwellings, historical and cultural sites.

B. The primary surface use is for grazing.

13. OPERATOR'S REPRESENTATIVE:

A. Through A.P.D. Approval:

Ken Beardemphl, Landman
Yates Petroleum Corporation
105 South Fourth Street
Artesia, New Mexico 88210
Phone (505)-748-1471

B. Through Drilling Operations,
Completions and Production:

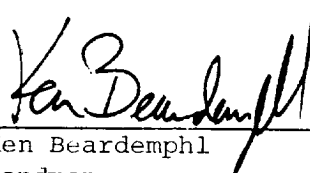
Mike Slater, Operations Manager
Yates Petroleum Corporation
105 South Fourth Street
Artesia, New Mexico 88210
Phone (505)-748-1471

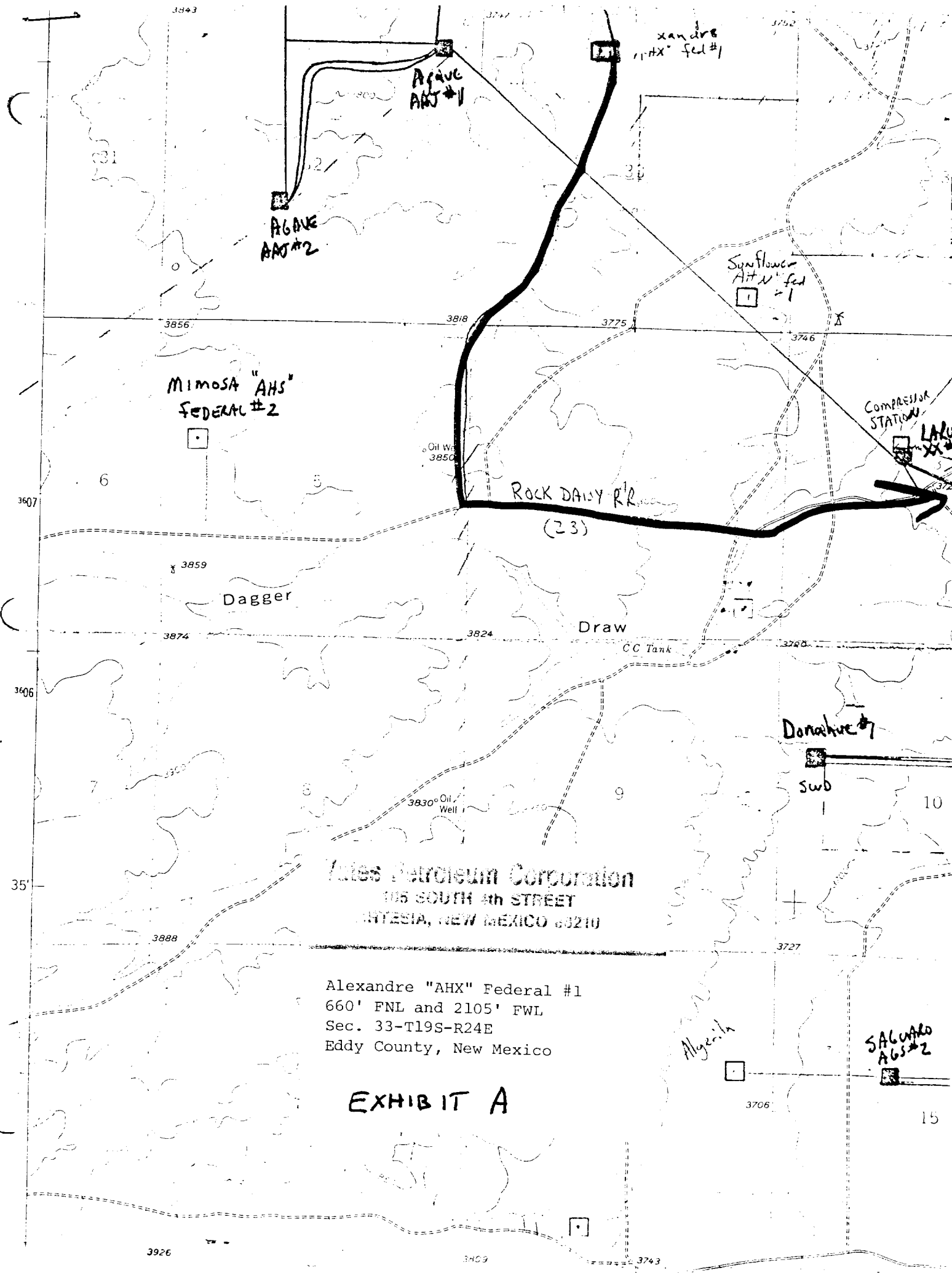
14. CERTIFICATION:

I hereby certify that I, or persons under my direct supervision, have inspected the proposed drillsite and access route, that I am familiar with the conditions which presently exist; that the statements made in this plan are to the best of my knowledge, true and correct; and, that the work associated with the operations proposed herein will be performed by Yates Petroleum Corporation and its contractors and subcontractors in conformity with this plan and the terms and conditions under which it is approved. This statement is subject to the provisions of 18 U.S.C. 1001 for the filing of a false statement.

7-3-90

Date


Ken Beardemphl
Landman



MIMOSA "AHS"
FEDERAL #2

Agave
AHS #1

Agave
AHS #2

alexandre
"AHX" Fed #1

Synflow
AHS #1 Fed #1

COMPRESSOR
STATION
LAGU

ROCK DAIRY R'R
(23)

Dagger

Draw

CC Tank

Donative #7

SWD

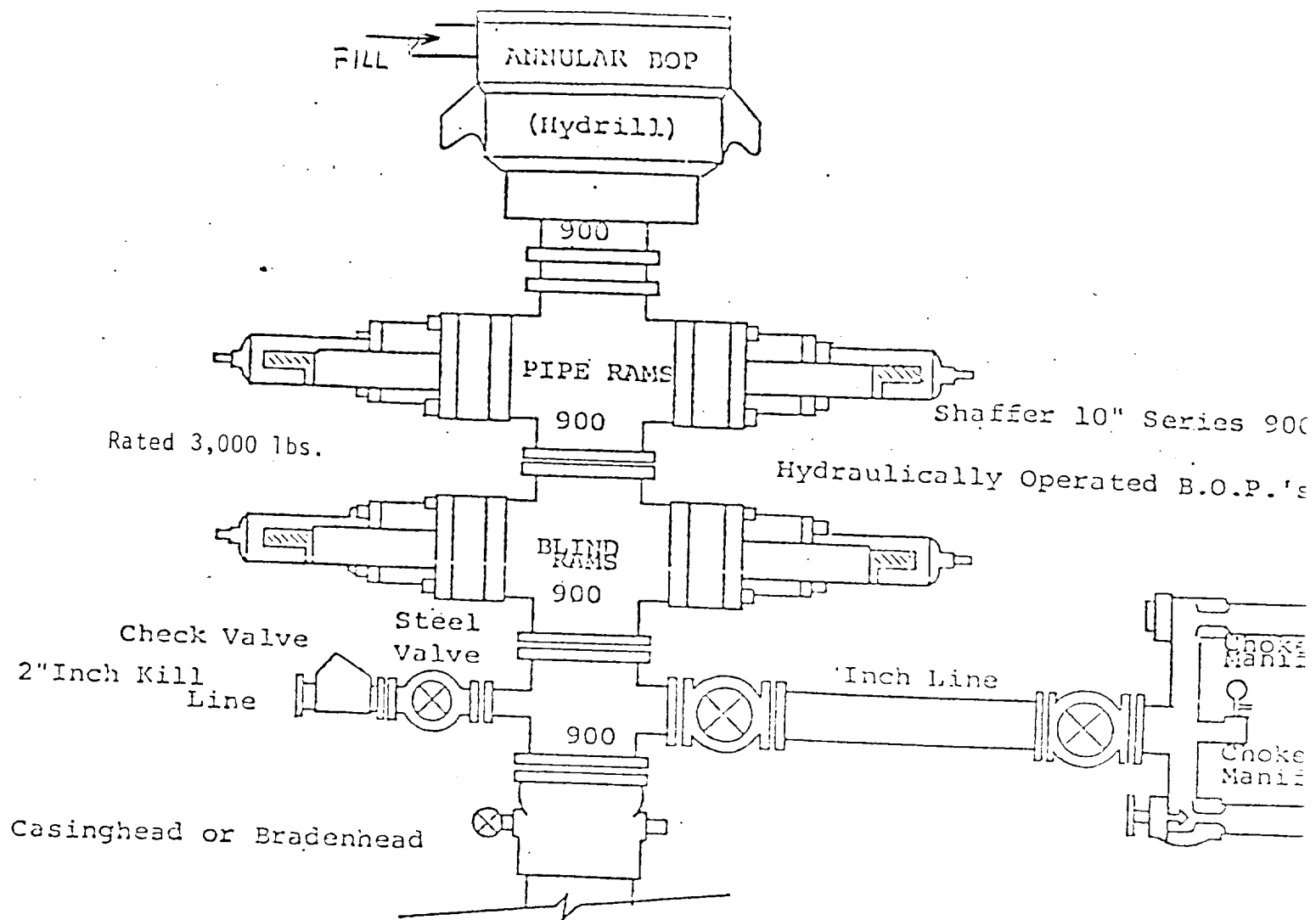
Atlas Petroleum Corporation
105 SOUTH 4th STREET
MARTINEZ, NEW MEXICO 88210

Alexandre "AHX" Federal #1
660' FNL and 2105' FWL
Sec. 33-T19S-R24E
Eddy County, New Mexico

EXHIBIT A

SAGRADO
AHS #2

Algebra



THE FOLLOWING CONSTITUTE MINIMUM BLOWOUT PREVENTER REQUIREMENTS

1. All preventers to be hydraulically operated with secondary manual controls installed prior to drilling out from under casing.
2. Choke outlet to be a minimum of 3" diameter.
3. Kill line to be of all steel construction of 2" minimum diameter.
4. All connections from operating manifolds to preventers to be all steel. hole or tube a minimum of one inch in diameter.
5. The available closing pressure shall be at least 15% in excess of that required with sufficient volume to operate the B.O.P.'s.
6. All connections to and from preventer to have a pressure rating equivalent to that of the B.O.P.'s.
7. Inside blowout preventer to be available on rig floor.
8. Operating controls located a safe distance from the rig floor.
9. Hole must be kept filled on trips below intermediate casing.

EXHIBIT
B

YATES PETROLEUM CORPORATION

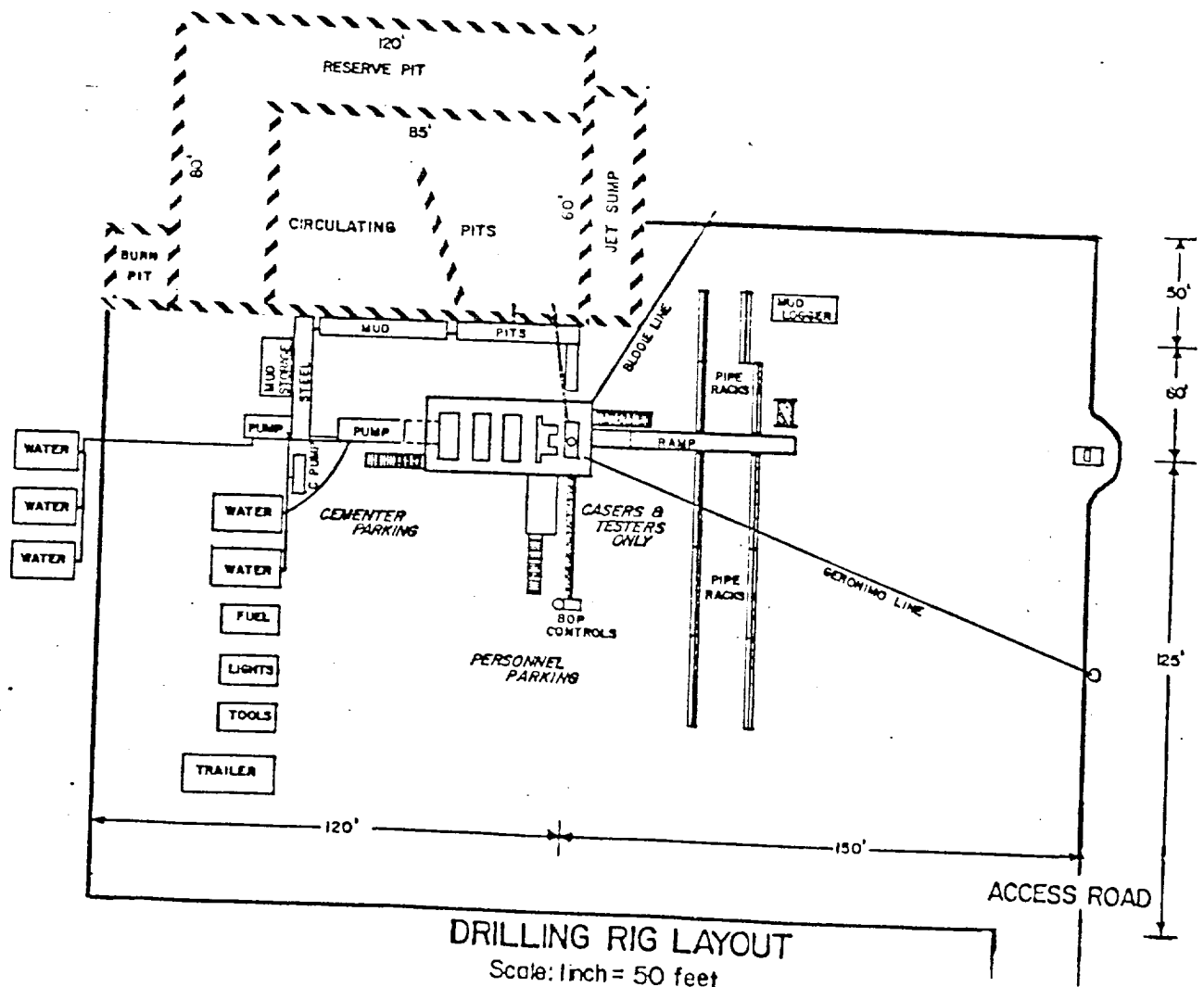
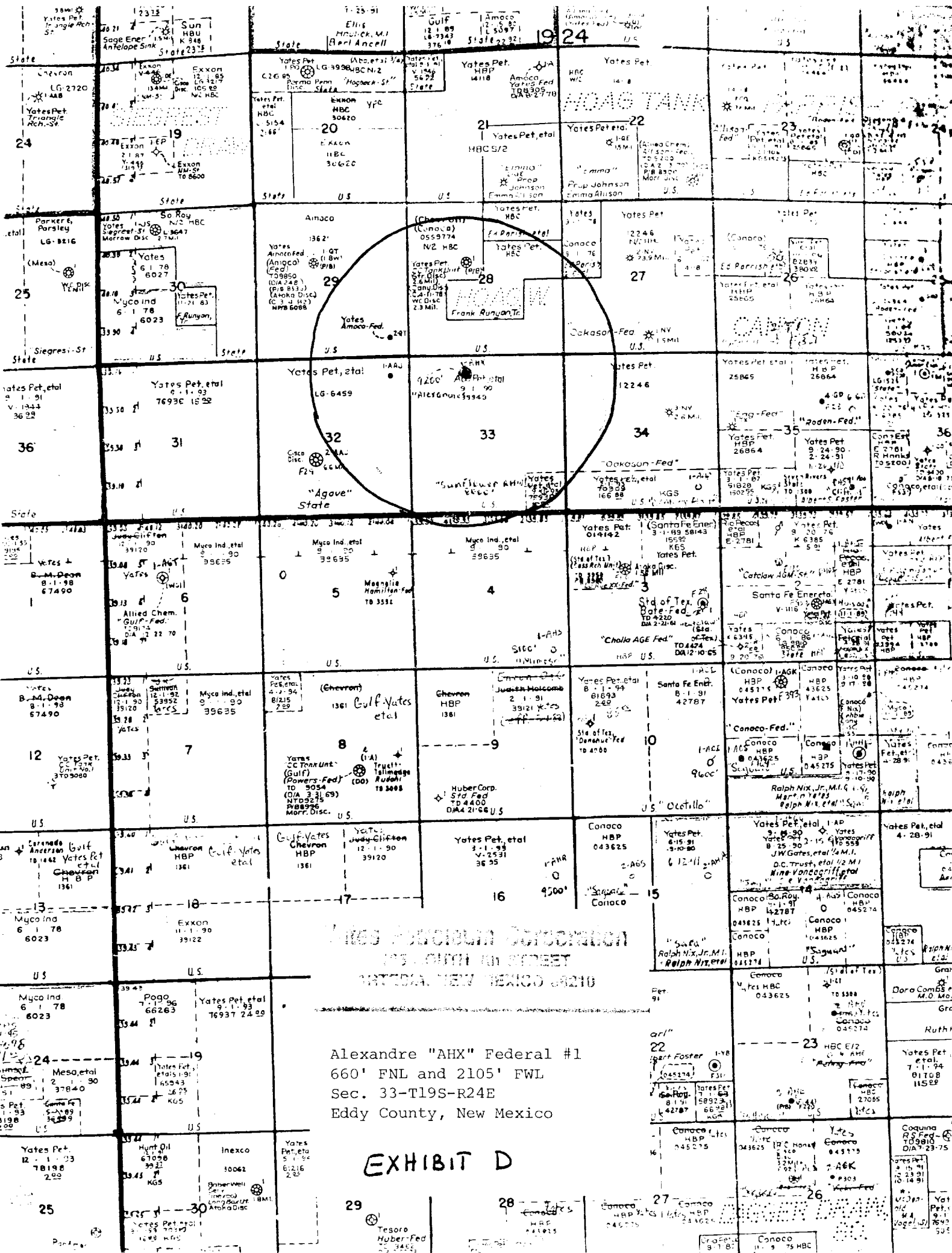


EXHIBIT C



Alexandre "AHX" Federal #1
660' FNL and 2105' FWL
Sec. 33-T19S-R24E
Eddy County, New Mexico

EXHIBIT D