

Submit to Appropriate
District Office
State Lease - 4 copies
Fee Lease - 3 copies

State of New Mexico
Energy, Minerals and Natural Resources Department

OIL CONSERVATION DIVISION
P.O. Box 2088
Santa Fe, New Mexico 87504-2088



DISTRICT I
P.O. Box 1980, Hobbs, NM 88240

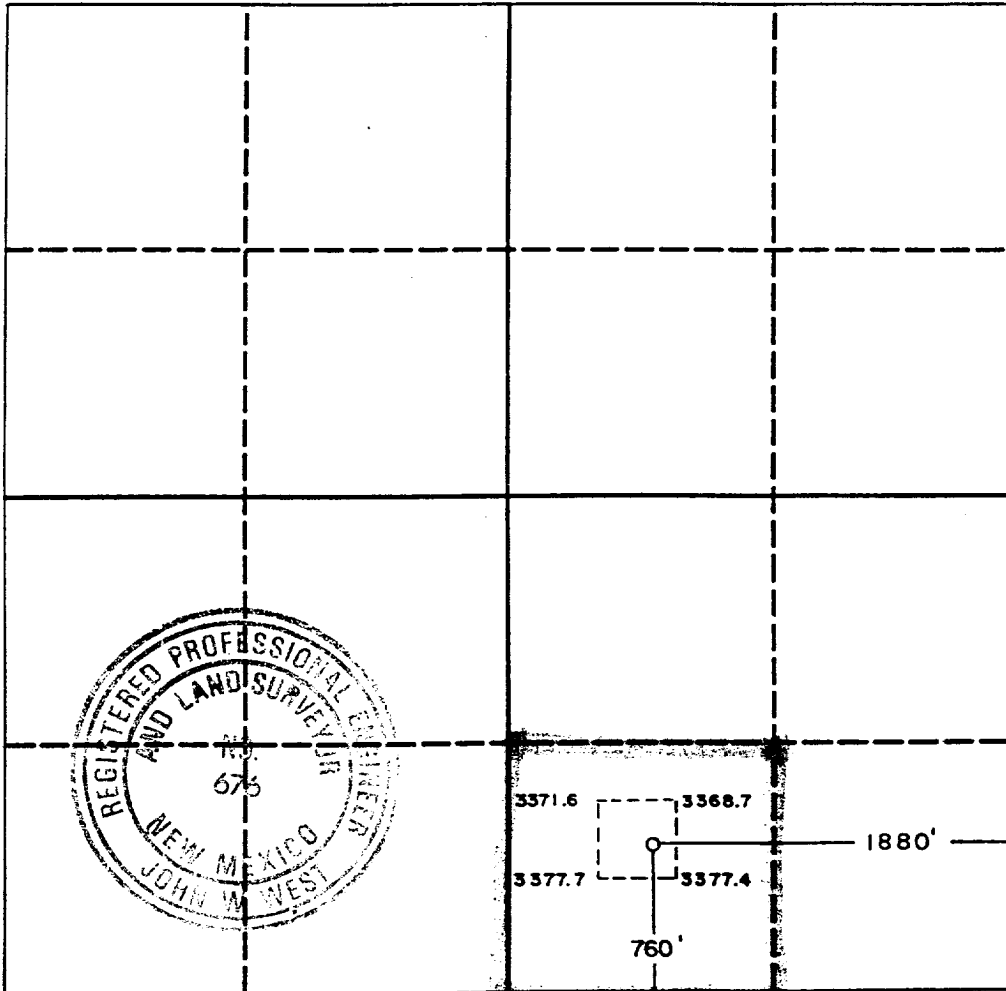
DISTRICT II
P.O. Drawer DD, Artesia, NM 88210

DISTRICT III
1000 Rio Brazos Rd., Aztec, NM 87410

WELL LOCATION AND ACREAGE DEDICATION PLAT
All Distances must be from the outer boundaries of the section

Operator CHEVRON U.S.A. INC.			Lease PACHECO FEDERAL		Well No. 7
Unit Letter 0	Section 31	Township 19 SOUTH	Range 28 EAST	County NMFM	EDDY
Actual Footage Location of Well: 1880 feet from the EAST line and 760 feet from the SOUTH line					
Ground level Elev. 3371.6	Producing Formation DELAWARE	Pool FADE-AWAY RIDGE DELAWARE	Dedicated Acreage: 40 Acres		

1. Outline the acreage dedicated to the subject well by colored pencil or hatchure marks on the plat below.
2. If more than one lease is dedicated to the well, outline each and identify the ownership thereof (both as to working interest and royalty).
3. If more than one lease of different ownership is dedicated to the well, have the interest of all owners been consolidated by communitization, unitization, force-pooling, etc.?
☐ Yes ☐ No If answer is "yes" type of consolidation _____
If answer is "no" list the owners and tract descriptions which have actually been consolidated. (Use reverse side of this form if necessary.)
No allowable will be assigned to the well until all interests have been consolidated (by communitization, unitization, forced-pooling, or otherwise) or until a non-standard unit, eliminating such interest, has been approved by the Division.



OPERATOR CERTIFICATION

I hereby certify that the information contained herein is true and complete to the best of my knowledge and belief.

Signature
E.O. Doherty
Printed Name
E.O. DOHERTY
Position
T.A. Delg
Company
CHEVRON USA INC
Date
5/30/91

SURVEYOR CERTIFICATION

I hereby certify that the well location shown on this plat was plotted from field notes of actual surveys made by me or under my supervision, and that the same is true and correct to the best of my knowledge and belief.

Date Surveyed
5-21-91
Signature & Seal of
Professional Surveyor
Certificate No. JOHN W. WEST, 676
RONALD J. EIDSON, 3239

MEMORANDUM GO-144

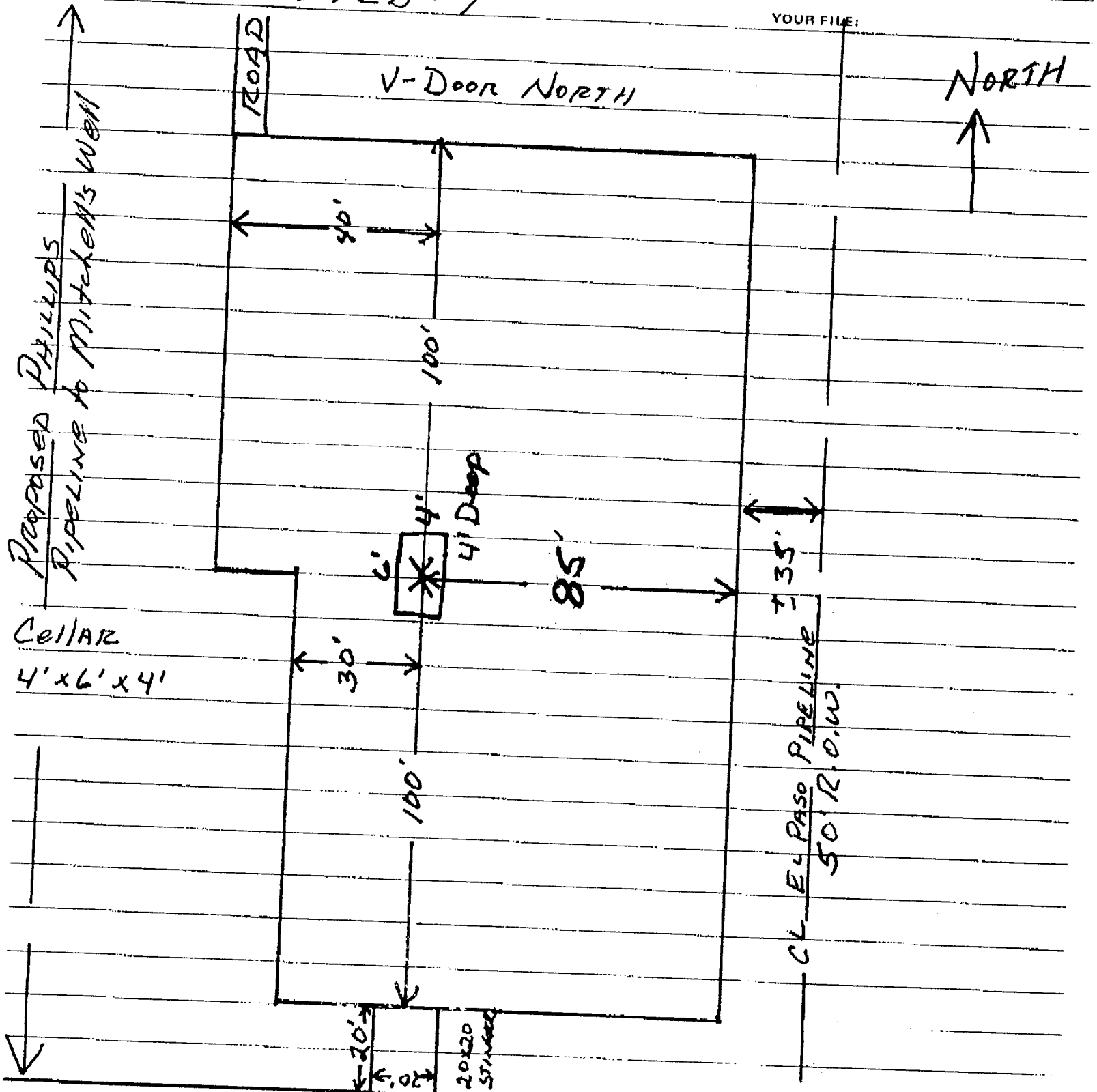
TO: BARRY HUNTFROM: ME AKINS

6-20 1991

SUBJECT: Drilling Pads
PACHECO FED #7

OUR FILE:

YOUR FILE:



WHEN REPLY IS REQUIRED, FORWARD ORIGINAL AND ONE COPY