

UNITED STATES  
DEPARTMENT OF THE INTERIOR  
BUREAU OF LAND MANAGEMENT

APPLICATION FOR PERMIT TO DRILL, DEEPEN, OR PLUG BACK

1a. TYPE OF WORK

DRILL ☒

DEEPEN ☐

PLUG BACK ☐

b. TYPE OF WELL

OIL  
WELL ☒

GAS  
WELL ☐

OTHER ☐

SINGLE  
ZONE ☒

MULTIPLE  
ZONE ☐

2. NAME OF OPERATOR

Westall & Mask

3. ADDRESS OF OPERATOR

P.O. Box 234 Loco Hills NM 88255

4. LOCATION OF WELL (Report location clearly and in accordance with any State requirements.)

At surface

2310 FNL & 990 FWL

At proposed prod. zone

Same

14. DISTANCE IN MILES AND DIRECTION FROM NEAREST TOWN OR POST OFFICE\*

7 miles south of Loco Hills NM

15. DISTANCE FROM PROPOSED\*

LOCATION TO NEAREST  
PROPERTY OR LEASE LINE, FT.  
(Also to nearest drlg. unit line, if any)

330

16. NO. OF ACRES IN LEASE

120

17. NO. OF ACRES ASSIGNED  
TO THIS WELL

40

18. DISTANCE FROM PROPOSED LOCATION\*

TO NEAREST WELL, DRILLING, COMPLETED,  
OR APPLIED FOR, ON THIS LEASE, FT.

660

19. PROPOSED DEPTH

4500

20. ROTARY OR CABLE TOOLS

Rotary

21. ELEVATIONS (Show whether DF, RT, GR, etc.)

3619 Gr

22. APPROX. DATE WORK WILL START\*

ASAP

23. PROPOSED CASING AND CEMENTING PROGRAM

SIZE OF HOLE	SIZE OF CASING	WEIGHT PER FOOT	SETTING DEPTH	QUANTITY OF CEMENT
12 1/4	8 5/8	24	800	Circulated
7 7/8	5 1/2	15	4500	1200 sxs (tie back)

We propose to drill and test the SanAndres formation. Fresh water will be used to drill the surface and brine water will be used to drill the production hole.

A 3000# BOP will be installed and tested on the 8 5/8" casing prior to drilling out casing shoe.

APPROVAL SUBJECT TO  
GENERAL REQUIREMENTS AND  
SPECIAL STIPULATIONS  
ATTACHED

Post ID-1  
12-21-90  
New loc + API

RECEIVED  
NOV 20 10 40 AM '90  
CER  
AR

IN ABOVE SPACE DESCRIBE PROPOSED PROGRAM. If proposal is to deepen or plug back, give data on present productive zone and proposed new productive zone. If proposal is to drill or deepen directionally, give pertinent data on subsurface locations and measured and true vertical depths. Give blowout preventer program, if any.

24.

SIGNED

TITLE Agent

DATE 11/19/90

(This space for Federal or State office use)

PERMIT NO.

APPROVAL DATE

APPROVED BY

TITLE

DATE 12.10.90

CONDITIONS OF APPROVAL, IF ANY:

\*See Instructions On Reverse Side

Submit to Appropriate  
District Office  
State Lease - 4 copies  
Fee Lease - 3 copies

OIL CONSERVATION DIVISION

P.O. Box 2088  
Santa Fe, New Mexico 87504-2088

DISTRICT I  
P.O. Box 1980, Hobbs, NM 88240

DISTRICT II  
P.O. Drawer DD, Artesia, NM 88210

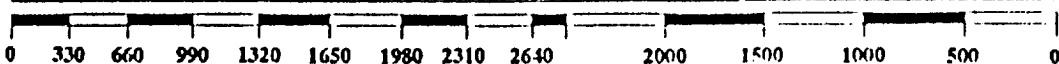
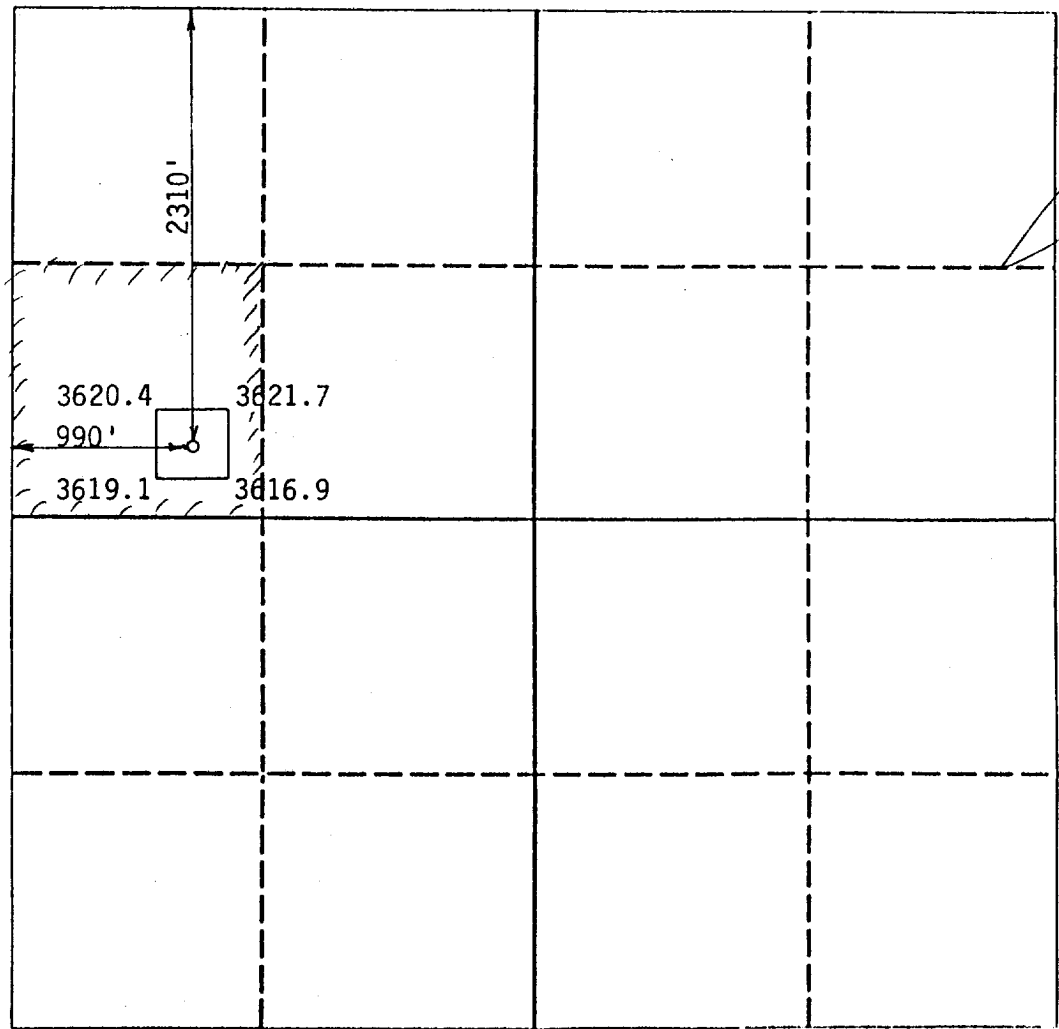
DISTRICT III  
1000 Rio Brazos Rd., Aztec, NM 87410

WELL LOCATION AND ACREAGE DEDICATION PLAT

All Distances must be from the outer boundaries of the section

Operator Westall & Mask			Lease Hinkle Federal "B"		Well No. 21
Unit Letter E	Section 34	Township 18 South	Range 31 East	County Eddy	
Actual Footage Location of Well: 2310 feet from the North line and 990 feet from the West line					
Ground level Elev. 3619		Producing Formation Qn-Gb-Sa		Pool Shugart	Dedicated Acreage: 40 Acres

- Outline the acreage dedicated to the subject well by colored pencil or hatchure marks on the plat below.
- If more than one lease is dedicated to the well, outline each and identify the ownership thereof (both as to working interest and royalty).
- If more than one lease of different ownership is dedicated to the well, have the interest of all owners been consolidated by communitization, unitization, force-pooling, etc.?  
☐ Yes ☐ No If answer is "yes" type of consolidation \_\_\_\_\_  
If answer is "no" list the owners and tract descriptions which have actually been consolidated. (Use reverse side of this form if necessary.)  
No allowable will be assigned to the well until all interests have been consolidated (by communitization, unitization, forced-pooling, or otherwise) or until a non-standard unit, eliminating such interest, has been approved by the Division.



**OPERATOR CERTIFICATION**  
I hereby certify that the information contained herein is true and complete to the best of my knowledge and belief.

Signature \_\_\_\_\_  
Printed Name  
Randall L. Harris  
Agent  
Position  
Westall & Mask  
Company  
11/19/90  
Date

**SURVEYOR CERTIFICATION**  
I hereby certify that the well location shown on this plat was plotted from field notes of actual surveys made by me or under my supervision, and that the same is true and correct to the best of my knowledge and belief.

Date Surveyed  
November 6, 1990  
Signature & Seal of Professional Surveyor  
P.R. Patton  
Certificate No. 8112

## APPLICATION FOR DRILLING

Westall & Mask  
Hinkle B Federal #21

In conjunction with Form 9-331-c, Application for Permit to Drill subject well, Westall & Mask submits the following ten items of pertinent information in accordance with BLM requirements:

1. The geological surface formation is quaternary.
2. The estimated tops of geologic markers are as follows:  
Yates 2300  
7 Rivers 2600  
Queen 3400
3. The estimated depths at which anticipated water, oil & gas formations are expected to be encountered:  
Water 0-180'  
Oil and Gas zones listed in item #2
4. Proposed casing program: See 9-331-c
5. Pressure Control Equipment: See 9-331-c and exhibit E.
6. Mud Program: Fresh water in surface hole, brine water to TD
7. Auxiliary Equipment: None
8. Logging Program: CNL/FDC/GR, DLL.
9. No abnormal pressures or temperatures are anticipated.
10. Anticipated Starting Date: As soon as possible.

## MULTI-POINT SURFACE USE AND OPERATIONS PLAN

### WESTALL & MASK

This plan is submitted with form 9-331-c, Application for Permit to Drill, covering the above described well. The purpose of this plan is to describe the location of the proposed well, the proposed construction activities and operations plan, the magnitude of surface disturbance involved, and the procedures to be followed in rehabilitating the surface after completion of the operations, so that a complete appraisal can be made of the environmental effect associated with the operation.

#### 1. EXISTING ROADS.

Exhibit A is a portion of a USGS topographic map showing the wells and roads in the vicinity of the proposed location.

#### 2. PLANNED ACCESS ROAD.

Approximately 350 feet of road will have to be built from the main road.

#### DIRECTIONS.

Proceed east from Loco Hills to county road 222. Go south approximately 6 miles, turn east 1 mile. Turn south 1 mile new road will start and continue south

#### 3. LOCATION OF EXISTING WELLS.

There is an existing well on this 40 acres.

#### 4. LOCATION OF EXISTING/OR PROPOSED FACILITIES

There is production facilities on the lease located on the Hinkle B Fed #7 location.

#### 5. LOCATION AND TYPE OF WATER SUPPLY.

It is planned to drill the proposed well with a brine water system. The water will be obtained from commercial sources and will be hauled to the location by truck.

#### 6. SOURCE OF CONSTRUCTION MATERIALS.

The location and road will be scraped out to caliche.

7. METHODS OF HANDLING WASTE DISPOSAL.

- A. Drill cuttings will be disposed of in the reserve pit.
- B. Drilling fluids will be allowed to evaporate in the reserve pits until the pits are dry.
- C. Produced water during operations will be stored in reserve pits until dry.
- D. Oil produced during operations will be stored in tanks until sold.
- E. Current laws and regulations pertaining to the disposal of human waste will be complied with.
- F. Trash, waste paper, garbage and junk will be buried in a separate trash pit and covered with a minimum of 24 inches of dirt. All waste material will be contained to prevent scattering by the wind.
- G. All trash and debris will be buried or removed from the wellsite within 30 days after finishing drilling and or completion of operations.

8. ANCILLARY FACILITIES

None required.

9. WELLSITE LAYOUT.

Exhibit C shows the relative location and dimensions of the well pad, the reserve pits, a 400' X 400' area has been staked and flagged.

10. PLANS FOR RESTORATION OF THE SURFACE.

- A. After finishing drilling and completion operations, all equipment and other material not needed for further operations will be removed. The location will be cleaned of all trash and junk to leave the wellsite in as aesthetically pleasing a condition as possible.
- B. Unguarded pits, if any containing fluids will be fenced until they have been filled.
- C. If the proposed well is non-productive, all rehabilitation and or vegetation requirements of the BLM and USGS will be complied with and will be accomplished as expeditiously as possible. All pits will be filled and leveled within 90 days after abandonment.

## 11. OTHER INFORMATION.

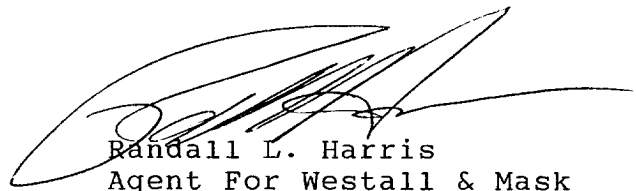
- A. Topography: The land surface in the vicinity of the wellsite is sandy.
- B. Flora and Fauna: The vegetation cover consists of prairie grass, greasewood and miscellaneous desert growth. No wildlife was observed, but wildlife in the area probably includes those typical of semi-arid desert land. The area is used for cattle grazing.
- C. There are no ponds, lakes or rivers in the area.
- D. There are no inhabited dwelling in the vicinity of the proposed well.
- E. Surface Ownership: The wellsite is on federal surface.
- F. Evidence of archeological sites has been reported and previously filed.

## 12. OPERATOR' REPRESENTATIVE

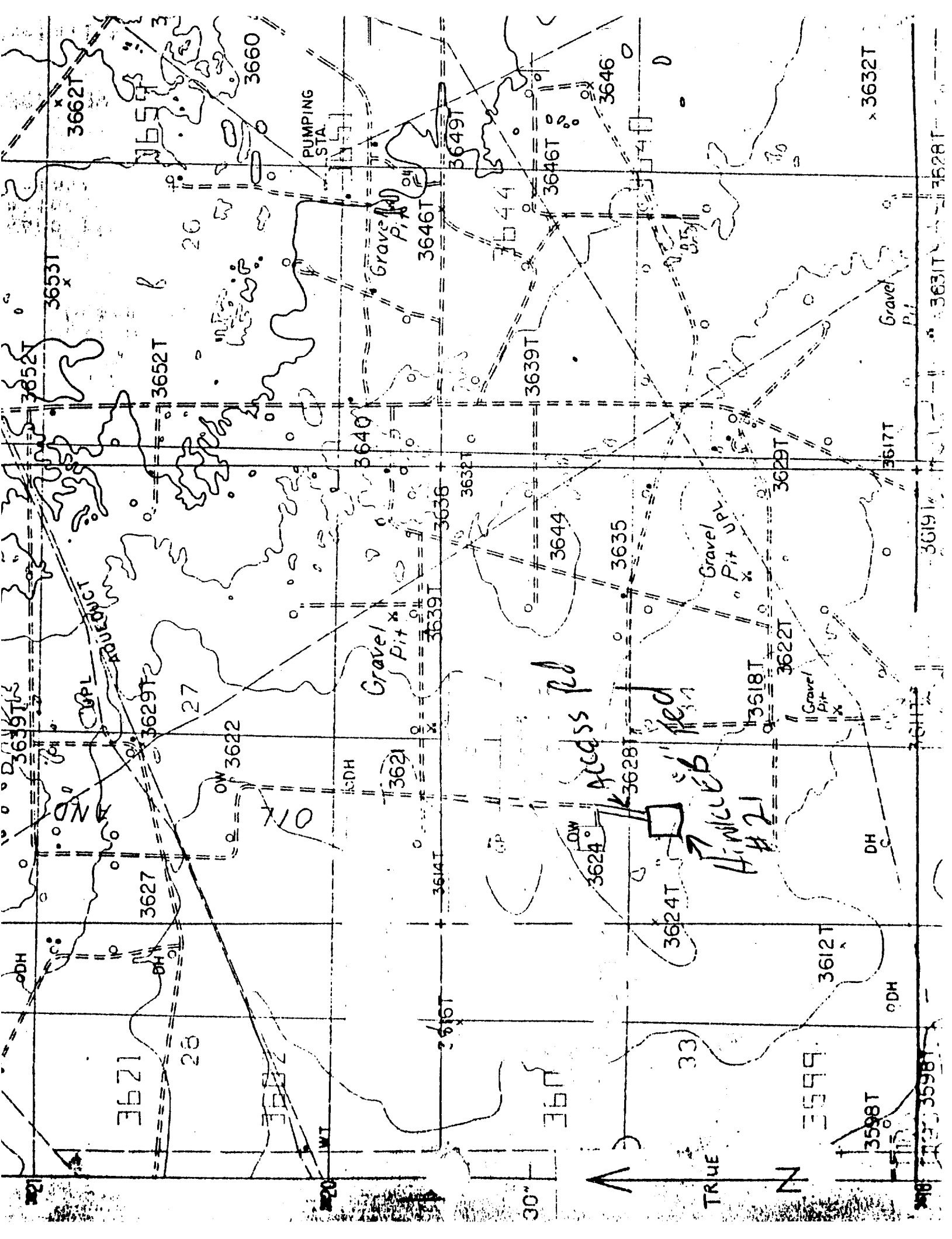
Ray Westall  
P.O. Box 4,  
Loco Hills, NM 88255  
(505) 677-2370

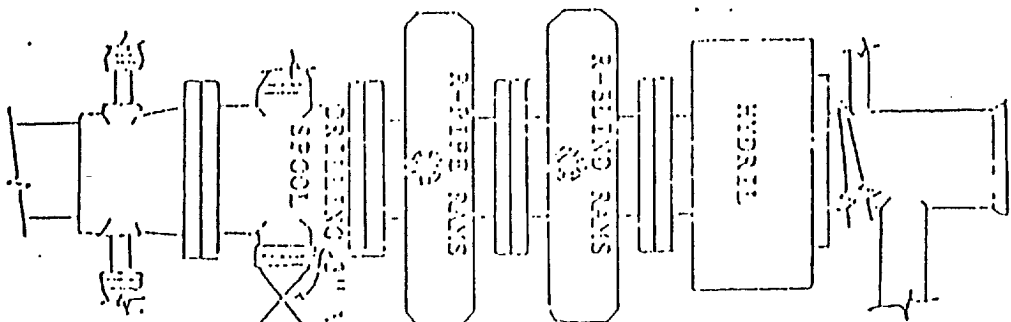
## 13. CERTIFICATION.

I hereby certify that I, or persons under my direct supervision, have inspected the proposed drillsite and access route, that I am familiar with the conditions which presently exist; that the statements made in this plan are to the best of my knowledge true and correct; and that the work associated with the operations proposed herein will be performed by the operator and it's subcontractors in conformity with this plan and the terms and conditions under which it is approved.

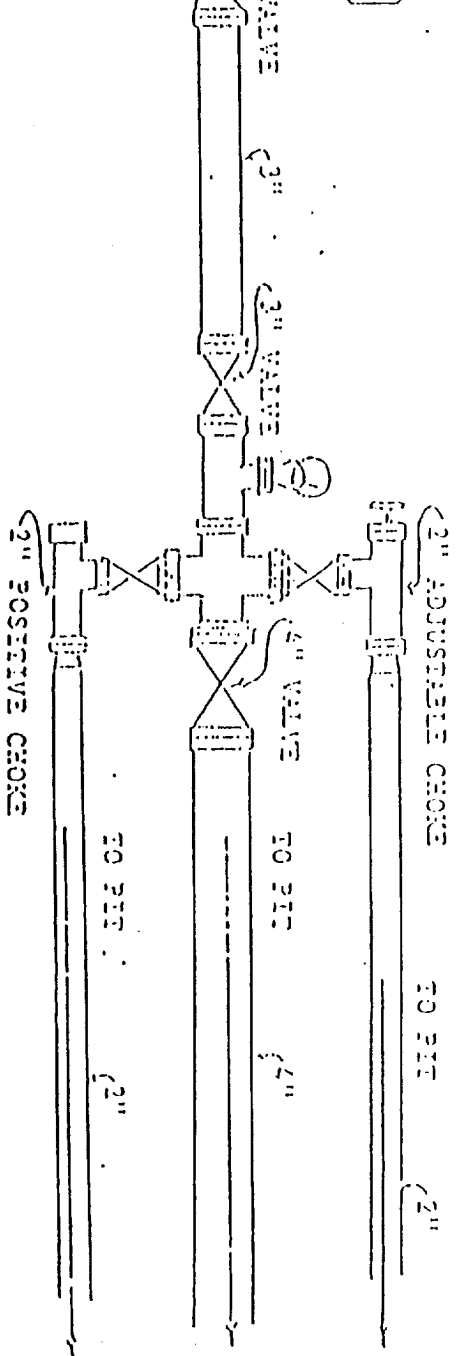


Randall L. Harris  
Agent For Westall & Mask



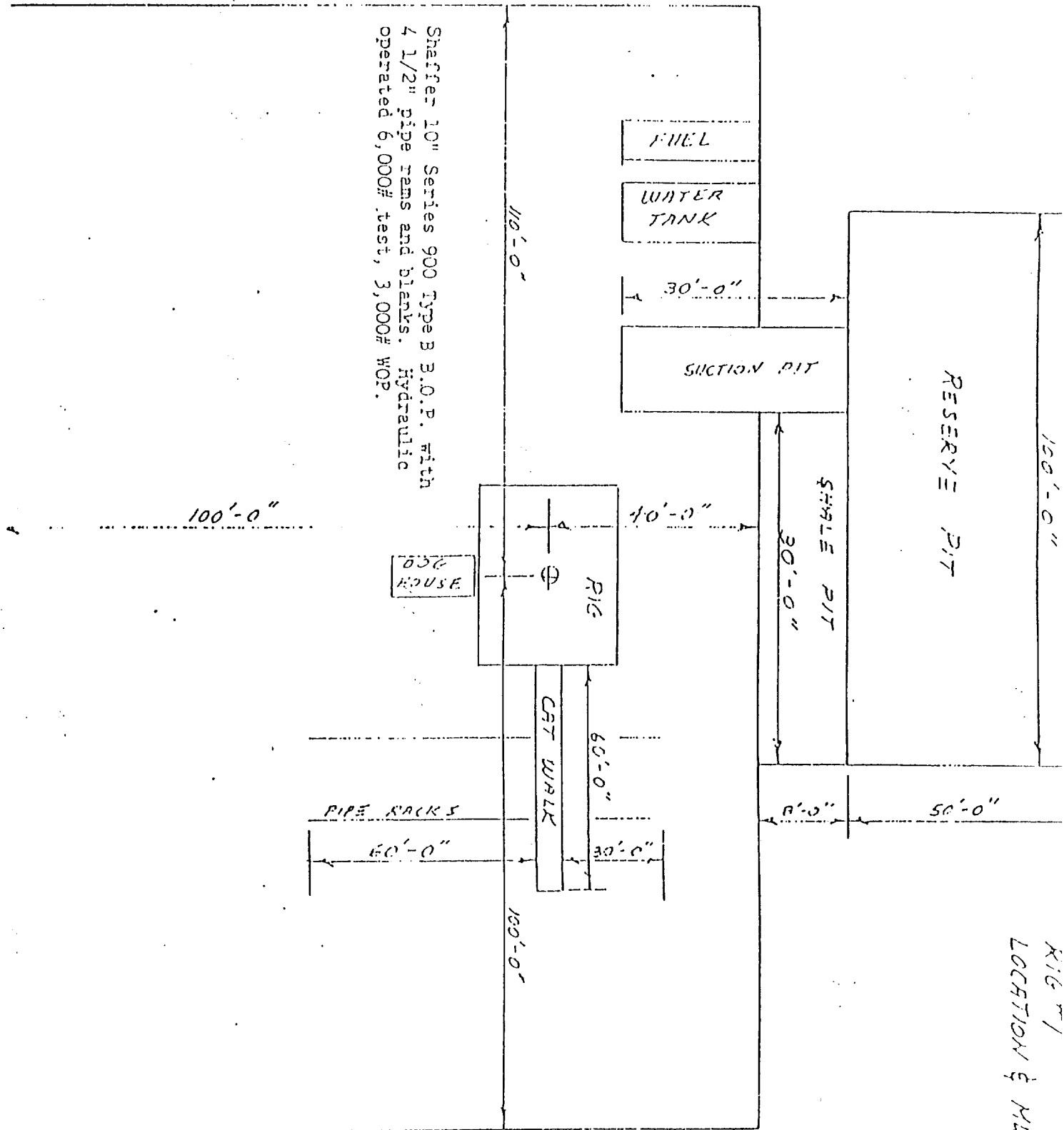


SHOW OUT PREVENTION EQUIPMENT  
 10" SCOS ALL FLANGED CONNECTIONS  
 5,000# WORKING PRESSURE - 6,000# TEST



ATTACHMENT TO FORM C-101





RIG #1  
LOCATION & MUD PIT SPECS.