

Submit to Appropriate District Office  
 State Lease - 6 copies  
 Fee Lease - 5 copies

State of New Mexico  
 Energy, Minerals and Natural Resources Department

Form C-101  
 Revised 1-1-89

**OIL CONSERVATION DIVISION**

P.O. Box 2088  
 Santa Fe, New Mexico 87504-2088

DISTRICT I  
 P.O. Box 1980, Hobbs, NM 88240

DISTRICT II  
 P.O. Drawer DD, Artesia, NM 88210

DISTRICT III  
 1000 Rio Brazos Rd., Aztec, NM 87410

API NO. (assigned by OCD on New Wells)  
30-015-26635

5. Indicate Type of Lease  
 STATE  FEE

FEB - 6 1991

State Oil & Gas Lease No.

**APPLICATION FOR PERMIT TO DRILL, DEEPEN, OR PLUG BACK**

1a. Type of Work:  
 DRILL  RE-ENTER  DEEPEN  PLUG BACK

b. Type of Well:  
 OIL WELL  GAS WELL  OTHER   
 SINGLE ZONE  MULTIPLE ZONE

7. Lease Name or Unit Agreement Name  
 Lodewick "A" Com

2. Name of Operator  
 Conoco Inc. ✓

8. Well No.  
 2

3. Address of Operator  
 10 Desta Drive West, Midland, TX 79705

9. Pool name or Wildcat  
 X North Dagger Draw Upper Perm.

4. Well Location  
 Unit Letter NE: 1650 Feet From The north Line and 660 Feet From The west Line  
 Section 19 Township 19S Range 25E NMPM Eddy County

10. Proposed Depth 7900'  
 11. Formation Cisco  
 12. Rotary or C.T. Rotary

13. Elevations (Show whether DF, RT, GR, etc.) GR 3585'  
 14. Kind & Status Plug. Bond Blanket  
 15. Drilling Contractor  
 16. Approx. Date Work will start

17. PROPOSED CASING AND CEMENT PROGRAM

SIZE OF HOLE	SIZE OF CASING	WEIGHT PER FOOT	SETTING DEPTH	SACKS OF CEMENT	EST. TOP
14-3/4"	9-5/8"	40#	1200'	2000 sxs	surface
8-3/4"	7"	26#	7700'	2600 sxs	surface

This well is proposed to be drilled as a Cisco oil producer.

- Attached are:
- 1) Well location and acreage dedication plat.
  - 2) Proposed well plan outline
  - 3) Cementing program outline
  - 4) BOP specifications

*Part ID-1  
 8-15-91  
 New Loc & API*

NOTE: This well will be completed open-hole from 7700'-7900'.

APPROVAL VALID FOR 180 DAYS  
 PERMIT EXPIRES 7/9/91  
 UNLESS DRILLING UNDERWAY

IN ABOVE SPACE DESCRIBE PROPOSED PROGRAM: IF PROPOSAL IS TO DEEPEN OR PLUG BACK, GIVE DATA ON PRESENT PRODUCTIVE ZONE AND PROPOSED NEW PRODUCTIVE ZONE. GIVE BLOWOUT PREVENTER PROGRAM, IF ANY.

I hereby certify that the information above is true and complete to the best of my knowledge and belief.

SIGNATURE Jerry W. Hoover TITLE Regulatory Coordinator DATE 2/4/91  
 TYPE OR PRINT NAME Jerry W. Hoover TELEPHONE NO. 915-686-6548

(This space for State Use) ORIGINAL SIGNED BY  
 MIKE WILLIAMS  
 SUPERVISOR, DISTRICT II TITLE \_\_\_\_\_ DATE **FEB 8 1991**

CONDITIONS OF APPROVAL, IF ANY:  
 NOTIFY N.M.O.C.D. IN SUFFICIENT TIME TO WITNESS CEMENTING THE 958 CASING

**OIL CONSERVATION DIVISION**

P.O. Box 2088  
Santa Fe, New Mexico 87504-2088

Submit to Appropriate  
District Office:  
State Lease - 4 copies  
Fee Lease - 3 copies

**DISTRICT I**  
P.O. Box 1980, Hobbs, NM 88240

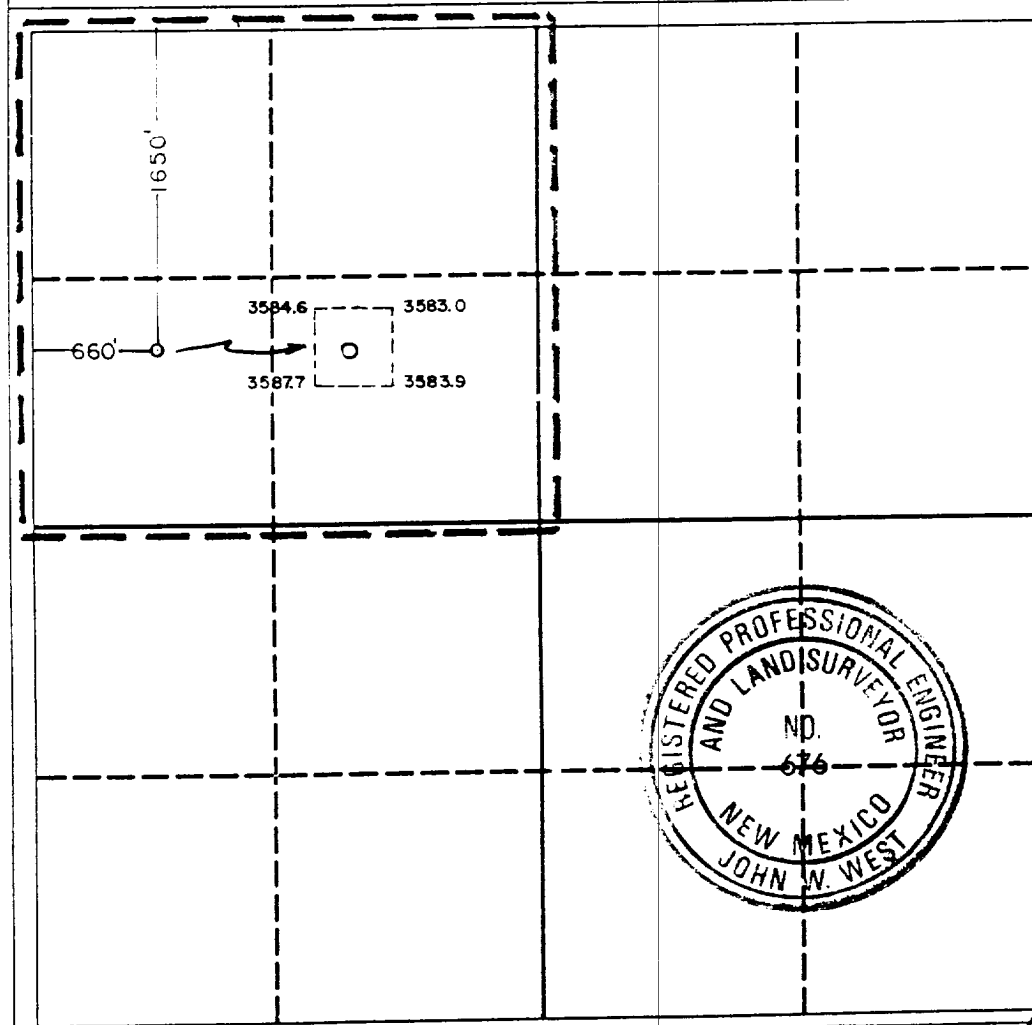
**DISTRICT II**  
P.O. Drawer DD, Artesia, NM 88210

**DISTRICT III**  
1000 Rio Brazos Rd., Aztec, NM 87410

**WELL LOCATION AND ACREAGE DEDICATION PLAT**  
All Distances must be from the outer boundaries of the section

Operator <b>CONOCO, INC.</b>			Lease <b>LODEWICK A COM.</b>		Well No. <b>2</b>
Unit Letter <b>E</b>	Section <b>19</b>	Township <b>19 SOUTH</b>	Range <b>25 EAST</b>	County <b>EDDY</b>	
Actual Footage Location of Well: <b>660</b> feet from the <b>WEST</b> line and <b>1650</b> feet from the <b>NORTH</b> line					
Ground level Elev. <b>3584.9</b>	Producing Formation <b>Cisco</b>	Pool <b>North Dagger Draw Upper Penn.</b>	Dedicated Acreage: <b>160</b> Acres		

- Outline the acreage dedicated to the subject well by colored pencil or hatchure marks on the plat below.
- If more than one lease is dedicated to the well, outline each and identify the ownership thereof (both as to working interest and royalty).
- If more than one lease of different ownership is dedicated to the well, have the interest of all owners been consolidated by communitization, unitization, force-pooling, etc.?  
 Yes     No    If answer is "yes" type of consolidation \_\_\_\_\_  
 If answer is "no" list the owners and tract descriptions which have actually been consolidated. (Use reverse side of this form if necessary.) \_\_\_\_\_  
 No allowable will be assigned to the well until all interests have been consolidated (by communitization, unitization, forced-pooling, or otherwise) or until a non-standard unit, eliminating such interest, has been approved by the Division.

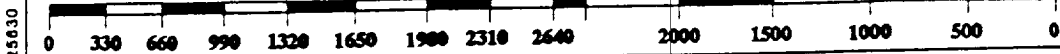


**OPERATOR CERTIFICATION**  
I hereby certify that the information contained herein is true and complete to the best of my knowledge and belief.

Signature: *[Handwritten Signature]*  
 Printed Name: **Berry W. Hoover**  
 Position: **Regulatory Coordinator**  
 Company: **Conoco Inc.**  
 Date: **2/4/91**

**SURVEYOR CERTIFICATION**  
I hereby certify that the well location shown on this plat was plotted from field notes of actual surveys made by me or under my supervision, and that the same is true and correct to the best of my knowledge and belief.

Date Surveyed: **1-16-91**  
 Signature & Seal of Professional Surveyor: *[Handwritten Signature]*  
 Certificate No. **JOHN W. WEST, 676**  
**RONALD J. EIDSON, 3239**



125830

PROPOSED WELL PLAN OUTLINE

WELL NAME: Lodewick A No.2

COUNTY: Eddy STATE: NM

LOCATION: 1650' FNL & 660' FNL

EST. KB: 3600'

Section 19, T19S, R25E

EST. GL: 3585'

DEPTH	FORMATION TOPS & TYPE	DRILLING PROBLEMS	TYPE OF FORMATION EVALUATION	HOLE SIZE	CASING SIZE-DEPTH	FRAC GRAD	FORM PRESS GRAD	MUD WT & TYPE (PPG)	DAYS
0	Surface water	Possible waterflow to 900'	0'-1200' Deviation survey each 250' not to exceed 5°					Spud 8.33	
1000				14-3/4	9-5/8 @1200'		<8.33		4
2000	Glorieta 1989'	Known lost circulation from 0-1100'	Install H2S monitor @1200'		w/2000 sx "lite" & "C" (to protect from surface waterflows and severe lost circ.)			Cut Brine 8.8-9.2	6
	Yeso 2145'	H2S poss. to TD	Install a 2-man mudlogger 1200' - TD						
3000			1200'-3000' Deviation survey each 250' not to exceed 5°						8
4000		Deviations from 4-6° likely from 3000'-6000' (ZW#1 & Parish IV #1)	3000'-6000' Deviation survey each 100' - 150' not to exceed 5°					pH>10 to TD	10
	Abo 4198'								
5000					DV Tool above lower Abo LC zone (if nec) 4500'				13
	Wolfcamp 5100'								
6000			6000'-TD Deviation survey each 250' not to exceed 5°						17
7000		H2S possible in Cisco							
	Cisco 7600'								
8000	Target TD 7900'			8-3/4"	7" @ 7700' w/2700 sx "H"&"C Lite"			Mud up with salt gel and starch @7500'	20
			GR-CNL-LDT-DLL-MSFL-CAL from 7900' - 1200'		Open Hole from 7700'-7900'	>15	8.3-9.0		25
9000			Image Log from 7900' - 7600'						

WELL NAME: Lodewick A Com No. 2

LOCATION : (Dagger Draw Field) Eddy County, New Mexico

Casing Program

Surface 9-5/8 inch in 14 3/4 hole at 1200 ft.  
Inter \_\_\_\_\_ inch in \_\_\_\_\_ hole at \_\_\_\_\_ ft.  
Prod 7 inch in 8 3/4 hole at 7700 ft.

Cementing Program

Surface

Lead 800 sxs Class Thixad Mixed at 12.2 ppg  
Additives 12# Calsonite  
Tail 1200 sxs Class C Mixed at 13.9 ppg  
Additives 2% CaCl

Intermediate (first stage)

Lead \_\_\_\_\_ sxs Class \_\_\_\_\_ Mixed at \_\_\_\_\_ ppg  
Additives \_\_\_\_\_  
Tail \_\_\_\_\_ sxs Class \_\_\_\_\_ Mixed at \_\_\_\_\_ ppg  
Additives \_\_\_\_\_  
Percent free water \_\_\_\_\_ Water loss \_\_\_\_\_ cc

(second stage)

Lead \_\_\_\_\_ sxs Class \_\_\_\_\_ Mixed at \_\_\_\_\_ ppg  
Additives \_\_\_\_\_  
Tail \_\_\_\_\_ sxs Class \_\_\_\_\_ Mixed at \_\_\_\_\_ ppg  
Additives \_\_\_\_\_  
Percent free water \_\_\_\_\_ Water loss \_\_\_\_\_ cc

Production (first stage)

Lead 1100 sxs Class "C" Lite Mixed at 12.4 ppg  
Additives 6% GEL FLA as needed  
Tail 300 sxs Class H Mixed at \_\_\_\_\_ ppg  
Additives 3% KCl FLA as needed for zero free water and 250 cc  
Percent free water \_\_\_\_\_ Water loss \_\_\_\_\_ cc

(second stage)

Lead 1000 sxs Class "C" Lite Mixed at \_\_\_\_\_ ppg  
Additives 6% GEL FLA as needed  
Tail 300 sxs Class H Mixed at \_\_\_\_\_ ppg  
Additives 3% KCl FLA as needed  
Percent free water \_\_\_\_\_ Water loss \_\_\_\_\_ cc

# BOP SPECIFICATIONS

