

UNITED STATES  
DEPARTMENT OF THE INTERIOR  
BUREAU OF LAND MANAGEMENT

SUBMIT IN \_\_\_\_\_ LOCATE\*  
(Other instructions on  
reverse side)

20-019-26270  
Form approved.  
Budget Bureau No. 1004-0136  
Expires August 31, 1985

APPLICATION FOR PERMIT TO DRILL, DEEPEN, OR PLUG BACK

1a. TYPE OF WORK

DRILL ☒

DEEPEN ☐

PLUG BACK ☐

b. TYPE OF WELL

OIL  
WELL ☒

GAS  
WELL ☐

OTHER

SINGLE  
ZONE ☐

MULTIPLE  
ZONES ☐

2. NAME OF OPERATOR

Yates Petroleum Corporation

JUN 22 1991

3. ADDRESS OF OPERATOR

105 South Fourth Street, Artesia, NM 88210

O. C. U.  
ARTESIA OFFICE

4. LOCATION OF WELL (Report location clearly and in accordance with any State requirements.)

At surface

1980' FNL & 660' FWL

At proposed prod. zone

W. E.

5. LEASE DESIGNATION AND SERIAL NO.

NM-0557142

6. IF INDIAN, ALLOTTEE OR TRIBE NAME

7. UNIT AGREEMENT NAME

8. FARM OR LEASE NAME

Ross "EG" Federal

9. WELL NO.

4

10. FIELD AND POOL, OR WILDCAT

N. Dagger Draw Upper Penn

11. SEC., T., R., M., OR BLK.  
AND SURVEY OR AREA

Sec. 20-T19S-R25E

12. COUNTY OR PARISH

Eddy

13. STATE

NM

14. DISTANCE IN MILES AND DIRECTION FROM NEAREST TOWN OR POST OFFICE\*

Approximately 20 miles southwest of Artesia, NM

15. DISTANCE FROM PROPOSED\*

LOCATION TO NEAREST  
PROPERTY OR LEASE LINE, FT.  
(Also to nearest drlg. unit line, if any)

660'

16. NO. OF ACRES IN LEASE

600

17. NO. OF ACRES ASSIGNED  
TO THIS WELL

160

18. DISTANCE FROM PROPOSED LOCATION\*  
TO NEAREST WELL, DRILLING, COMPLETED,  
OR APPLIED FOR, ON THIS LEASE, FT.

19. PROPOSED DEPTH

8300'

20. ROTARY OR CABLE TOOLS

Rotary

21. ELEVATIONS (Show whether DF, RT, GR, etc.)

3567 GR

22. APPROX. DATE WORK WILL START\*

ASAP

23.

PROPOSED CASING AND CEMENTING PROGRAM

SIZE OF HOLE	SIZE OF CASING	WEIGHT PER FOOT	SETTING DEPTH	QUANTITY OF CEMENT
14 3/4"	9 5/8"	36# J-55	1200'	1100 sacks (circulated)
8 3/4"	7"	23-26#	TD	As warranted
		J-55 & N-80		

Yates Petroleum Corporation proposes to drill and test the Canyon and intermediate formations. Approximately 1200' of surface casing will be set and cement circulated to shut off gravel and cavings. If commercial, production casing will be run and cemented, will perforate and stimulate as needed for production.

MUD PROGRAM: FW gel/LCM to 1200'; FW to 5000'; cut Brine to 7200'; SW gel/Starch to TD.

BOP PROGRAM: BOP's and hydrill will be installed on 9 5/8" casing and tested daily.

Post ID-1  
6-28-91  
New Loc & API

IN ABOVE SPACE DESCRIBE PROPOSED PROGRAM: If proposal is to deepen or plug back, give data on present productive zone and proposed new productive zone. If proposal is to drill or deepen directionally, give pertinent data on subsurface locations and measured and true vertical depths. Give blowout preventer program, if any.

24.

SIGNED

*[Signature]*

TITLE

Landman

DATE

5-29-91

(This space for Federal or State office use)

PERMIT NO.

Drig. Monied by Richard F. [unclear]

APPROVAL DATE

AREA MANAGER  
CARLSBAD RESOURCE AREA

DATE

6-20-91

APPROVED BY

TITLE

CONDITIONS OF APPROVAL, IF ANY:

APPROVAL SUBJECT TO  
GENERAL REQUIREMENTS AND  
SPECIAL STIPULATIONS

\*See Instructions On Reverse Side

ATTACHED

U.S.C. Section 1001, makes it a crime for any person knowingly and willfully to make to any department or agency of the United States any false, fictitious or fraudulent statements or representations as to any matter within its jurisdiction.

Submit to Appropriate  
District Office  
State Lease - 4 copies  
Fee Lease - 3 copies

State of New Mexico  
Energy, Minerals and Natural Resources Department

Form C-102  
Revised 1-1-89

OIL CONSERVATION DIVISION

P.O. Box 2088  
Santa Fe, New Mexico 87504-2088

DISTRICT I  
P.O. Box 1980, Hobbs, NM 88240

DISTRICT II  
P.O. Drawer DD, Artesia, NM 88210

DISTRICT III  
1000 Rio Brazos Rd., Aztec, NM 87410

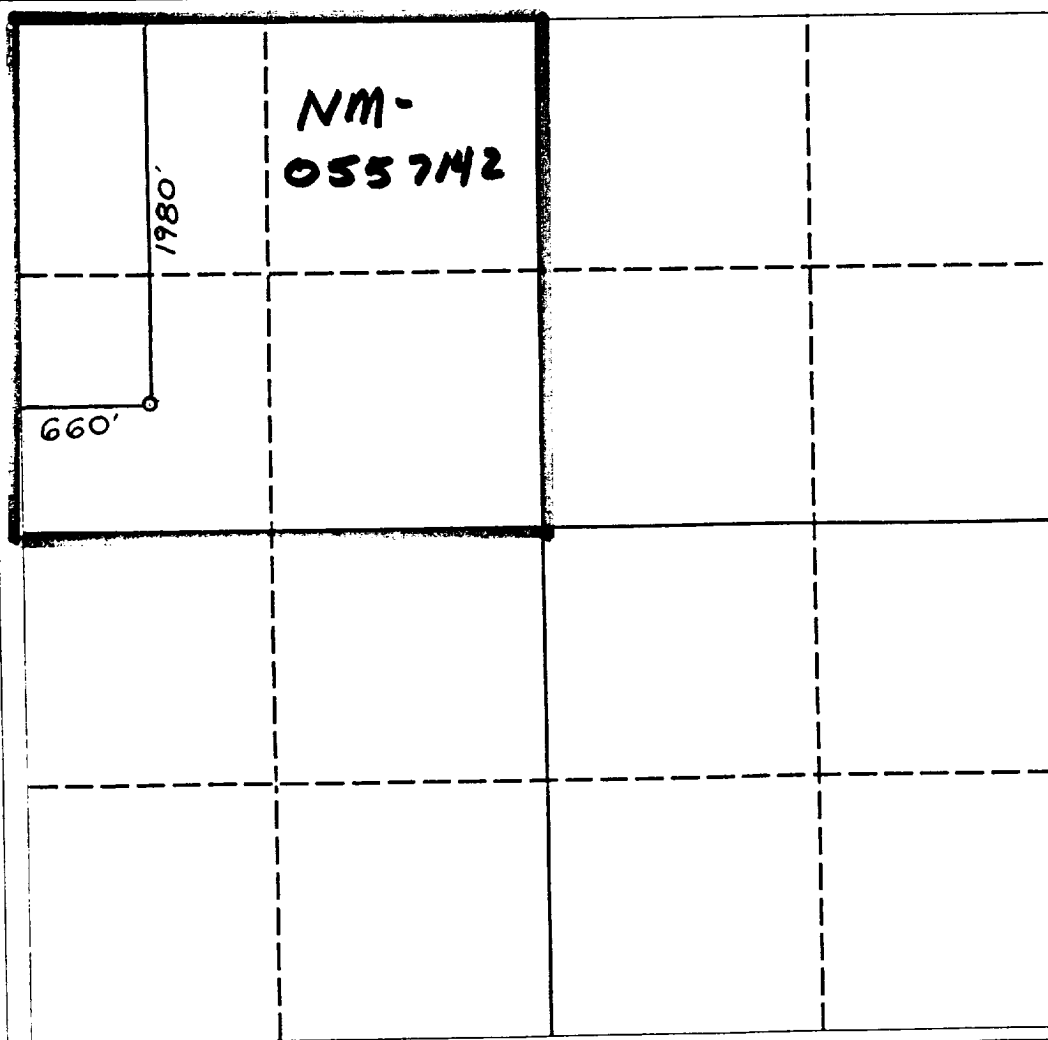
WELL LOCATION AND ACREAGE DEDICATION PLAT  
All Distances must be from the outer boundaries of the section

RECEIVED  
JUN 20 1991

O. C. D.  
ARTESIA, OFFICE

Operator <b>YATES PETROLEUM CORPORATION</b>			Lease <b>ROSS EG FEDERAL</b>		Well No. <b>4</b>
Unit Letter <b>E</b>	Section <b>20</b>	Township <b>19 SOUTH</b>	Range <b>25 EAST</b>	County <b>EDDY COUNTY, N.M.</b>	
Actual Footage Location of Well: <b>1980</b> feet from the <b>NORTH</b> line and <b>660</b> feet from the <b>WEST</b> line					
Ground level Elev. <b>3567.</b>	Producing Formation <b>Canyon</b>		Pool <b>N. Dagger Draw Upper Penn</b>	Dedicated Acreage: <b>160</b> Acres	

1. Outline the acreage dedicated to the subject well by colored pencil or hachure marks on the plat below.
2. If more than one lease is dedicated to the well, outline each and identify the ownership thereof (both as to working interest and royalty).
3. If more than one lease of different ownership is dedicated to the well, have the interest of all owners been consolidated by communitization, unitization, force-pooling, etc.?  
☐ Yes ☒ No If answer is "yes" type of consolidation \_\_\_\_\_  
If answer is "no" list the owners and tract descriptions which have actually been consolidated. (Use reverse side of this form if necessary). \_\_\_\_\_  
No allowable will be assigned to the well until all interests have been consolidated (by communitization, unitization, forced-pooling, or otherwise) or until a non-standard unit, eliminating such interest, has been approved by the Division.



OPERATOR CERTIFICATION

I hereby certify that the information contained herein is true and complete to the best of my knowledge and belief.

Signature *Ken Beardemph1*  
Printed Name **Ken Beardemph1**  
Position **Landman**  
Company **Yates Petroleum Corp.**  
Date **5-29-91**

SURVEYOR CERTIFICATION

I hereby certify that the well location shown on this plat was plotted from field notes of actual surveys made by me or under my supervision, and that the same is true and correct to the best of my knowledge and belief.

Date Surveyed **MAY 21, 1991**  
Signature *[Signature]*  
Professional Surveyor  
NEW MEXICO  
5412  
REGISTERED PROFESSIONAL ENGINEER  
CERTIFICATE NO. SURVEYOR  
NM PLATE 300 5412

**YATES PETROLEUM CORPORATION**

**Ross "EG" Federal #4  
1980' FNL and 660' FWL  
Section 20-T19S-R25E  
Eddy County, New Mexico**

In conjunction with Form 3160-3, Application for Permit to Drill subject well, Yates Petroleum Corporation submits the following ten items of pertinent information in accordance with BLM requirements.

1. The geological surface formation is Alluvium:
2. The estimated tops of geologic markers are as follows:

San Andres	691'
Glorieta	2,173'
Bone Spring Lime	3,587'
Wolfcamp Lime	5,494'
Canyon Lime	7,612'
Canyon Dolomite	7,747'
Base Canyon Dolomite	7,979'
TD	8,300'
3. The estimated depths at which anticipated water, oil or gas formations are expected to be encountered:

Water:	Approximately 275'
Oil or Gas:	Wolfcamp, Canyon
4. Proposed Casing Program: See Form 3160-3.
5. Pressure Control Equipment: See Form 3160-3 and Exhibit B.
6. Mud Program: See Form 3160-3.
7. Auxiliary Equipment: Kelly Cock; pit level indicators and flow sensor equipment; sub with full-opening valve on floor, drill pipe connections.
8. Testing, Logging and Coring Program:

Samples: 10' samples from surface depth to total depth.

DST's: As warranted.

Logging:	CNL-LDT from TD to casing, with GR-CNL up to surface; DLL with RxO from TD to casing.
----------	--
9. No abnormal pressures or temperatures are anticipated.
10. Anticipated starting date: As soon as possible after approval.

## **MULTI-POINT SURFACE USE AND OPERATIONS PLAN**

**Yates Petroleum Corporation**

**Ross "EG" Federal #4**

**1980' FNL and 660' FWL**

**Section 20-T19S-R25E**

**Eddy County, New Mexico**

This plan is submitted with Form 3160-3, Application for Permit to Drill, covering the above described well. The purpose of this plan is to describe the location of the proposed well, the proposed construction activities and operations plan, the magnitude of the surface disturbance involved and the procedures to be followed in rehabilitating the surface after completion of the operations, so that a complete appraisal can be made of the environmental effect associated with the operations.

### **1. EXISTING ROADS:**

Exhibit A is a portion of BLM map showing the well and roads in the vicinity of the proposed location. The proposed wellsite is located approximately 20 miles southwest of Artesia, New Mexico, and the access route to the location is indicated in red and green on Exhibit A.

#### **DIRECTIONS:**

1. Go south of Artesia on Highway 285 for approximately 13 miles to Rockin R Red Road.
2. Turn west and go approximately 6.5 miles.
3. Turn on lease road going south .2 mile, turn to the west to the Ross "EG" Federal #3 location.
4. New road starts here.

### **2. PLANNED ACCESS ROAD**

- A. The proposed new access will be approximately 1000' in length from point of origin to the northwest edge of the drilling pad. The road will lie in a north to south direction.
- B. The new road will be 14 feet in width (driving surface) and will be adequately drained to control runoff and soil erosion.
- C. The new road will be bladed with drainage on one side. No traffic turnout will be built.

### **3. LOCATION OF EXISTING WELL**

- A. There is drilling activity within a one-mile radius of the wellsite.
- B. Exhibit D shows existing wells within a one-mile radius of the proposed wellsite.

### **4. LOCATION OF EXISTING AND/OR PROPOSED FACILITIES**

- A. There are production facilities on this lease at the present time.
- B. In the event that the well is productive, the necessary production facilities will be installed on the drilling pad. If the well is productive oil, a gas or diesel self-contained unit will be used to provide the necessary power. No power will be required if the well is productive of gas.

### **5. LOCATION AND TYPE OF WATER SUPPLY:**

- A. It is planned to drill the proposed well with a fresh water system. The water will be obtained from commercial sources and will be hauled to the location by truck over the existing and proposed roads shown in Exhibit A.

**6. SOURCE OF CONSTRUCTION MATERIALS:**

Private located in Section 21-T19S-R25E.

**7. METHODS OF HANDLING WASTE DISPOSAL:**

- A. Drill cuttings will be disposed of in the reserve pits.
- B. Drilling fluids will be allowed to evaporate in the reserve pits until the pits are dry.
- C. Water produced during operations will be collected in tanks until hauled to an approved disposal system, or separate disposal application will be submitted.
- D. Oil produced during operations will be stored in tanks until sold.
- E. Current laws and regulations pertaining to the disposal of human waste will be complied with.
- F. Trash, waste paper, garbage and junk will be buried in a separate trash pit and covered with a minimum of 24 inches of dirt. All waste material will be contained to prevent scattering by the wind.
- G. All trash and debris will be buried or removed from the wellsite within 30 days after finishing drilling and/or completion operations.

**8. ANCILLARY FACILITIES:**

Flowline - 3" steel buried on west side of road to Ross "EG" Federal #3 battery.

**9. WELLSITE LAYOUT:**

- A. Exhibit C shows the relative location and dimensions of the well pad, the reserve pits, the location of the drilling equipment, rig orientation and access road approach. A cross section of a drill pad with approximate cuts, fills and pad orientation is shown on Exhibit E.
- B. The reserve pits will be plastic lined.
- C. A 400' x 400' area has been staked and flagged.

**10. PLANS FOR RESTORATION**

- A. After finishing drilling and/or completion operations, all equipment and other material not needed for further operations will be removed. The location will be cleaned of all trash and junk to leave the wellsite in as aesthetically pleasing a condition as possible.
- B. Unguarded pits, if any, containing fluids will be fenced until they have dried and been levelled.
- C. If the proposed well is non-productive, all rehabilitation and/or vegetation requirements of the landowner agreement will be complied with and will be accomplished as expeditiously as possible. All pits will be filled level within 90 days after abandonment.

**11. SURFACE OWNERSHIP:** Yates has made a landowner deal with Mr. Carl Ross on this well pad, road and flowline.

**12. OTHER INFORMATION:**

- A. Topography: Refer to the existing archaeological report for a description of the topography, flora, fauna, soil characteristics, dwellings, historical and cultural sites.
- B. The primary surface use is for grazing.

13. OPERATOR'S REPRESENTATIVE

A. Through A.P.D. Approval:

Ken Beardemphl, Landman  
Yates Petroleum Corporation  
105 South Fourth Street  
Artesia, New Mexico 88210  
Phone (505) 748-1471

B. Through Drilling Operations,  
Completions and Production:

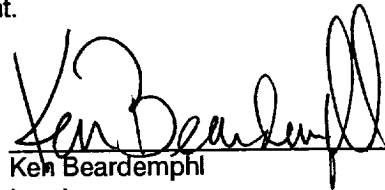
Mike Slater, Operations Manager  
Yates Petroleum Corporation  
105 South Fourth Street  
Artesia, New Mexico 88210  
Phone (505) 748-1471

14. CERTIFICATION:

I hereby certify that I, or persons under my direct supervision, have inspected the proposed drillsite and access route, that I am familiar with the conditions which presently exist; that the statements made in this plan are to the best of my knowledge, true and correct; and , that the work associated with the operations proposed herein will be performed by Yates Petroleum Corporation and its contractors and subcontractors in conformity with this plan and the terms and conditions under which it is approved. This statement is subject to the provisions of 18 U.S.C. 1001 for the filing of a false statement.

5-29-91

\_\_\_\_\_  
Date

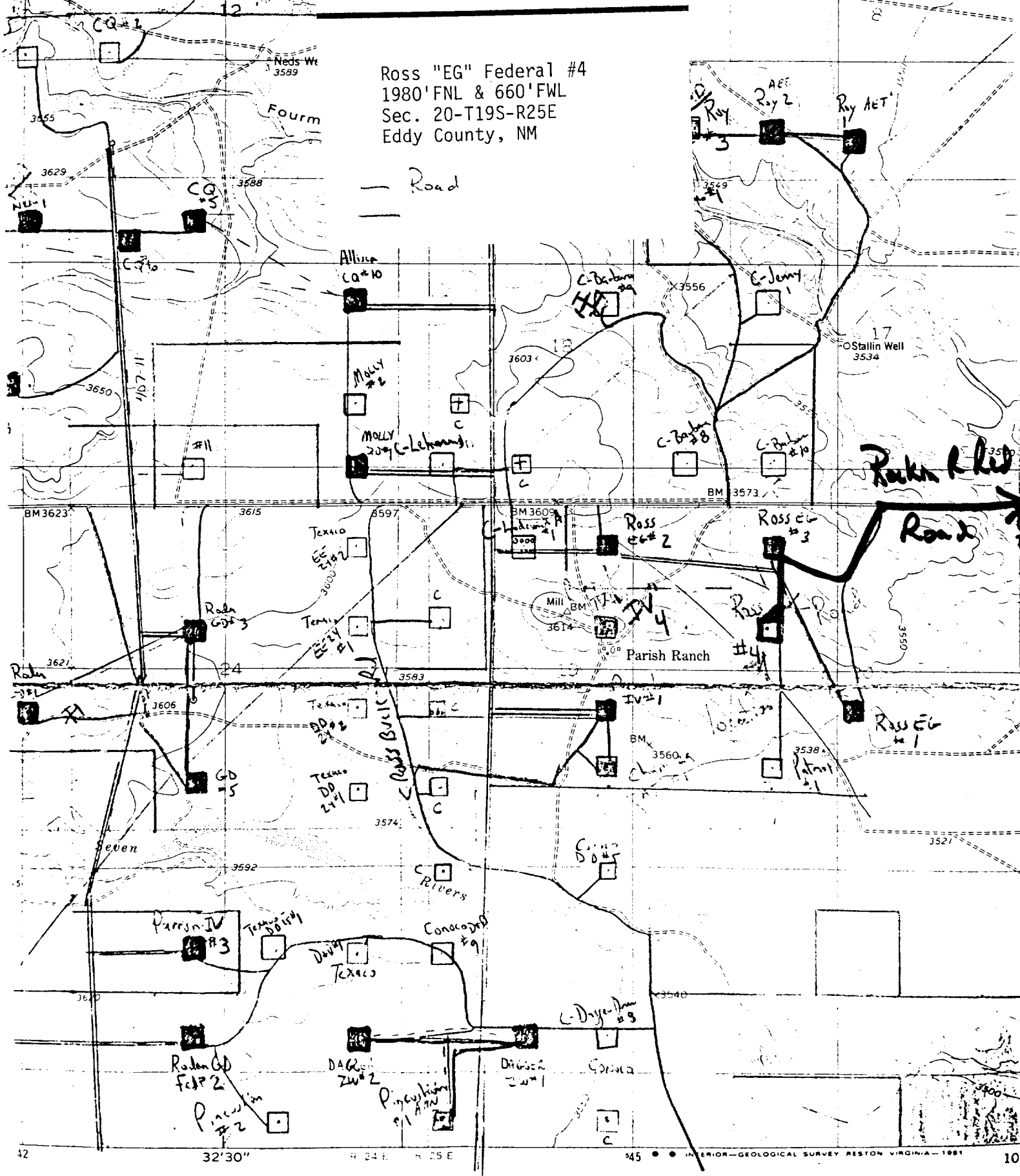
  
\_\_\_\_\_  
Ken Beardemphl  
Landman

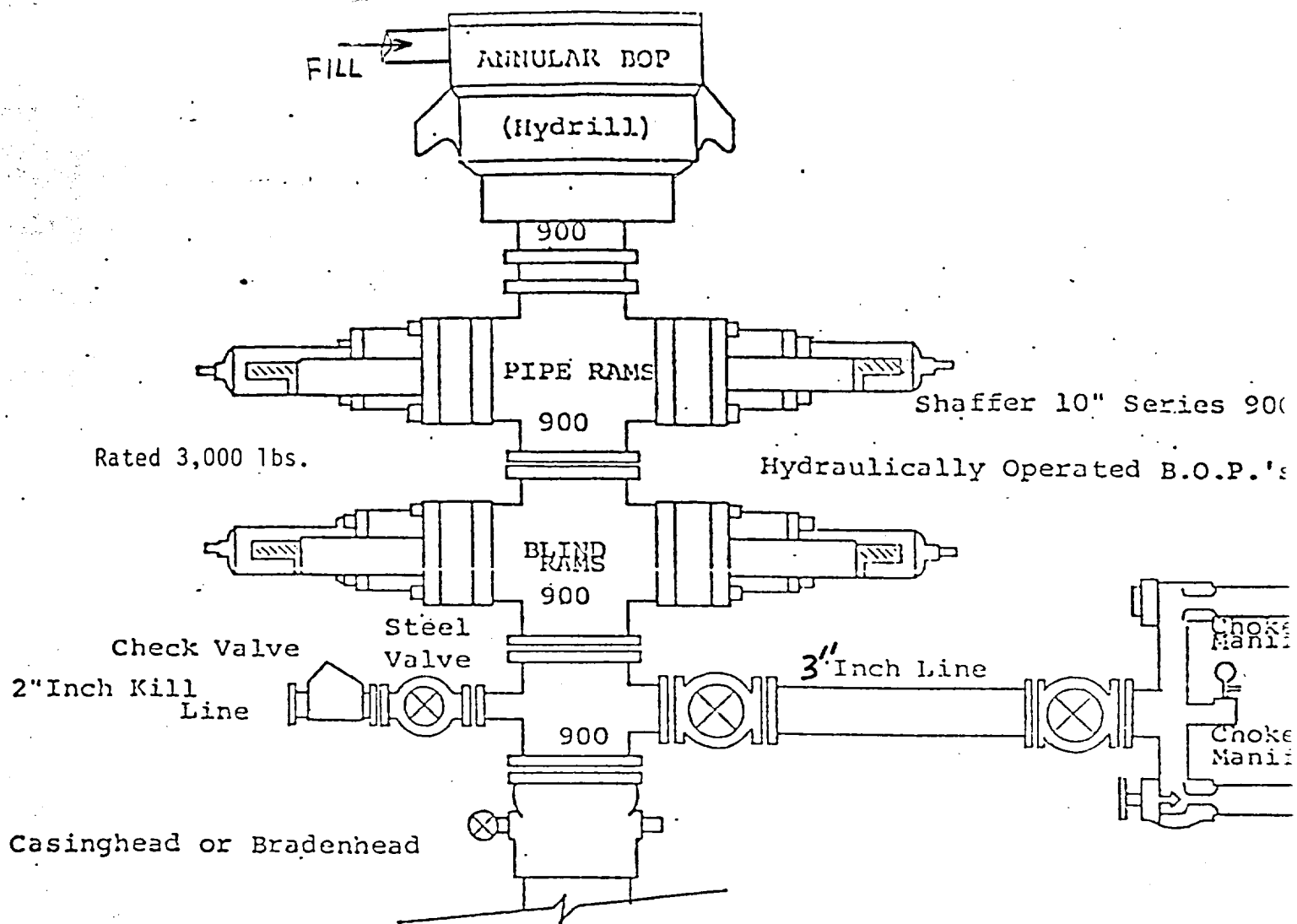
# Yates Petroleum Corporation

105 SOUTH 4th STREET  
ARTESIA, NEW MEXICO 88210

Ross "EG" Federal #4  
1980' FNL & 660' FWL  
Sec. 20-T19S-R25E  
Eddy County, NM

— Road





THE FOLLOWING CONSTITUTE MINIMUM BLOWOUT PREVENTER REQUIREMENTS

1. All preventers to be hydraulically operated with secondary manual controls installed prior to drilling out from under casing.
2. Choke outlet to be a minimum of 3" diameter.
3. Kill line to be of all steel construction of 2" minimum diameter.
4. All connections from operating manifolds to preventers to be all steel. hole or tube a minimum of one inch in diameter.
5. The available closing pressure shall be at least 15% in excess of that required with sufficient volume to operate the B.O.P.'s.
6. All connections to and from preventer to have a pressure rating equivalent to that of the B.O.P.'s.
7. Inside blowout preventer to be available on rig floor.
8. Operating controls located a safe distance from the rig floor.
9. Hole must be kept filled on trips below intermediate casing.

EXHIBIT  
B



# YATES PETROLEUM CORPORATION

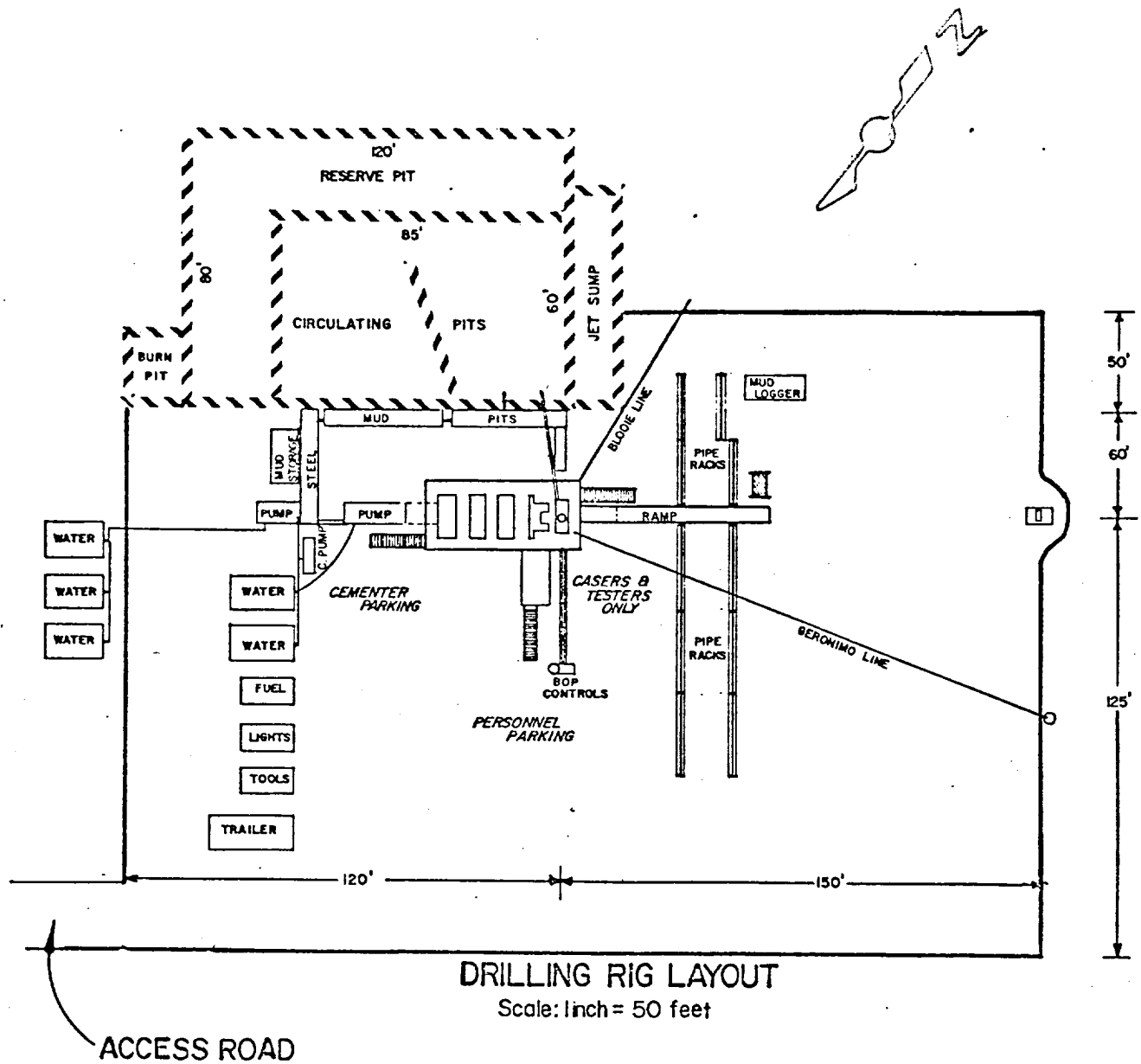


EXHIBIT C

# Yates Petroleum Corporation

105 SOUTH 4th STREET  
ARTESIA, NEW MEXICO 88210

Ross "EG" Federal #4  
1980' FNL & 660' FWL  
Sec. 20-T19S-R25E  
Eddy County, NM

EXHIBIT D

