

Submit to Appropriate
District Office
State Lease - 6 copies
Fee Lease - 5 copies

State of New Mexico
Energy, Minerals and Natural Resources Department

Form C-101
Revised 1-1-89

DISTRICT I
P.O. Box 1980, Hobbs, NM 88240

DISTRICT II
P.O. Drawer DD, Artesia, NM 88210

DISTRICT III
1000 Rio Brazos Rd., Aztec, NM 87410

OIL CONSERVATION DIVISION

P.O. Box 2088
Santa Fe, New Mexico 87504-2088

AUG 27 1991

O. C. D.

API NO. (assigned by OCD on New Wells)

30-015-26819

5. Indicate Type of Lease

STATE ☐ FEE ☒

6. State Oil & Gas Lease No.

7. Lease Name or Unit Agreement Name

Mayer 24

8. Well No.

1

9. Pool name or Wildcat

Dagger Draw Upper Pennsylvanian, South North

1a. Type of Work:

DRILL ☒ RE-ENTER ☐ DEEPEN ☐ PLUG BACK ☐

b. Type of Well:

OIL WELL ☒ GAS WELL ☐ OTHER ☐ SINGLE ZONE ☐ MULTIPLE ZONE ☐

2. Name of Operator

Nearburg Producing Company

3. Address of Operator

P. O. Box 823085, Dallas, Texas 75382-3085

4. Well Location

Unit Letter E : 1,980 Feet From The North Line and 660 Feet From The West Line

Section 24 Township 20S Range 24E NMPM Eddy County

10. Proposed Depth

8,500'

11. Formation

Cisco Canyon

12. Rotary or C.T.

Rotary

13. Elevations (Show whether DF, RT, GR, etc.)

3,609.6' GR

14. Kind & Status Plug. Bond

Blanket

15. Drilling Contractor

Undetermined

16. Approx. Date Work will start

September 10, 1991

17. PROPOSED CASING AND CEMENT PROGRAM

SIZE OF HOLE	SIZE OF CASING	WEIGHT PER FOOT	SETTING DEPTH	SACKS OF CEMENT	EST. TOP
17-1/2"	13-3/8"	48#	450'	475	Circulate
12-1/4"	9-5/8"	36#	1,300'	775	Circulate
8-3/4"	7"	23# & 26#	8,100'	950	Tie back to 9-5/8"

Propose to drill the well to sufficient depth to evaluate the Cisco/Canyon formation. After reaching TD, logs will be run and casing set if the evaluation is positive. Perforate, test, and stimulate as necessary to establish production.

BOP Program attached.

APPROVAL VALID FOR 180 DAYS

PERMIT EXPIRES 2/28/92

UNLESS DRILLING UNDERWAY

NOTE: We plan to drill a 12-1/4" hole to equal 450'. If hole conditions permit, we will then continue drilling a 12-1/4" hole from 450'-1,350' and run 9-5/8" casing and circulate cement. If hole conditions do not allow us to drill on from 450', we will open the surface hole to 17-1/2", run 13-3/8" casing to 450' and cement to surface, and drill a 12-1/4" hole to 1,300' and run and cement 9-5/8" casing.

IN ABOVE SPACE DESCRIBE PROPOSED PROGRAM: IF PROPOSAL IS TO DEEPEN OR PLUG BACK, GIVE DATA ON PRESENT PRODUCTIVE ZONE AND PROPOSED NEW PRODUCTIVE ZONE. GIVE BLOWOUT PREVENTER PROGRAM, IF ANY.

I hereby certify that the information above is true and complete to the best of my knowledge and belief.

SIGNATURE Mildred Simpkins TITLE Production Analyst DATE 8/26/91

TYPE OR PRINT NAME Mildred Simpkins TELEPHONE NO. 214/739-1778

(This space for State Use)

ORIGINAL SIGNED BY
MIKE WILLIAMS

APPROVED BY SUPERVISOR, DISTRICT II TITLE DATE AUG 28 1991

CONDITIONS OF APPROVAL, IF ANY:

NOTIFY N.M.O.C.D. IN SUFFICIENT
TIME TO WITNESS CEMENTING THE
13 3/8" & 9 5/8" CASING

Submit to Appropriate
District Office
Some Lease - 4 copies
Fee Lease - 3 copies

State of New Mexico
Energy, Minerals and Natural Resources Department

Form C-102
Revised 1-1-89

OIL CONSERVATION DIVISION

P.O. Box 2088
Santa Fe, New Mexico 87504-2088

RECEIVED

AUG 27 1991

O. C. D.
ARTESIA OFFICE

DISTRICT I
P.O. Box 1980, Hobbs, NM 88240

DISTRICT II
P.O. Drawer DD, Artesia, NM 88210

DISTRICT III
1000 Rio Brazos Rd., Aztec, NM 87410

WELL LOCATION AND ACREAGE DEDICATION PLAT

All Distances must be from the outer boundaries of the section

Operator Nearburg Producing Co.			Lease Mayer 24		Well No. 1
Unit Letter E	Section 24	Township 20 South	Range 24 East	County NMPM	Eddy
Actual Footage Location of Well: 1980 feet from the North line and 660 feet from the West line					
Ground level Elev. 3609.6'	Producing Formation Cisco Canyon	Pool Dagger Draw Upper Pennsylvanian, North	Dedicated Acreage: 320.00 Acres		

1. Outline the acreage dedicated to the subject well by colored pencil or hatchure marks on the plat below.

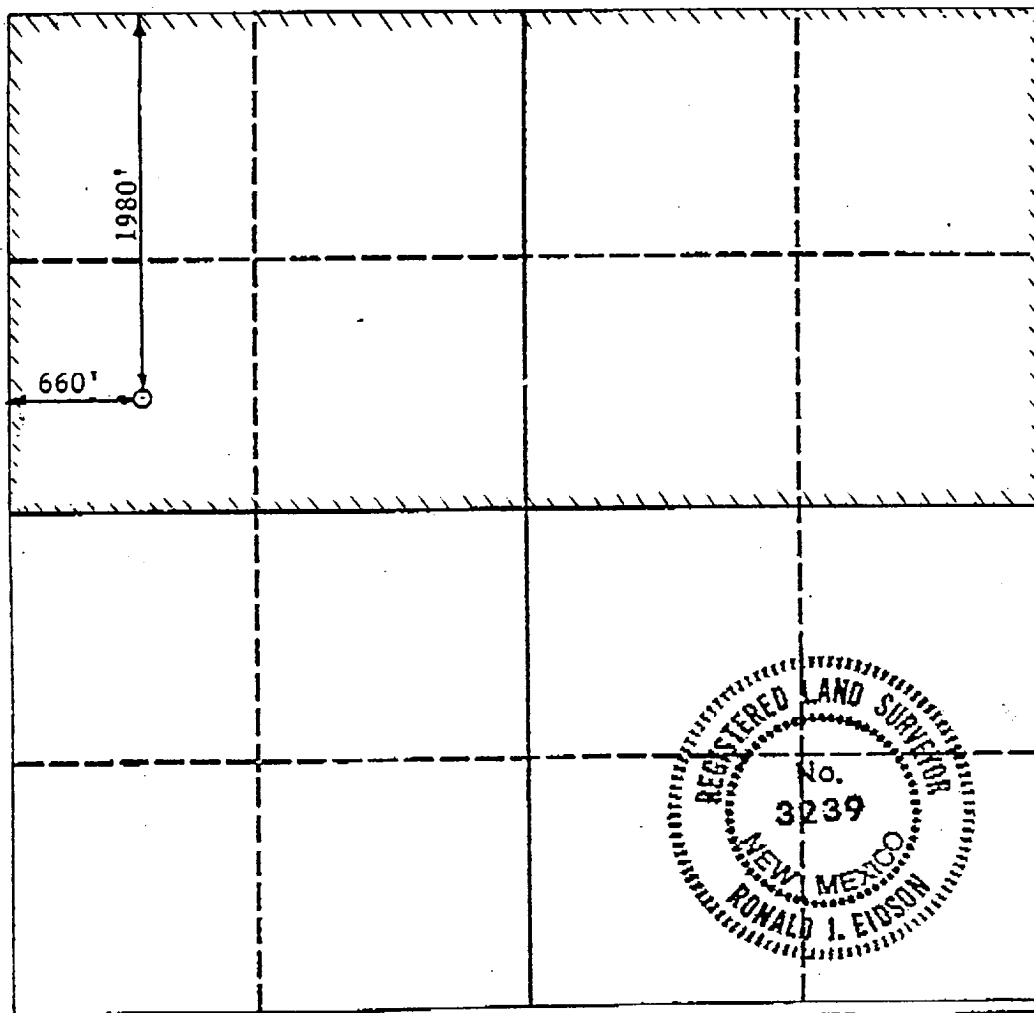
2. If more than one lease is dedicated to the well, outline each and identify the ownership thereof (both as to working interest and royalty).

3. If more than one lease of different ownership is dedicated to the well, have the interest of all owners been consolidated by communitization, unitization, force-pooling, etc.?

☒ Yes ☐ No If answer is "yes" type of consolidation Pooling

If answer is "no" list the owners and tract descriptions which have actually been consolidated. (Use reverse side of this form if necessary.)

No allowable will be assigned to the well until all interests have been consolidated (by communitization, unitization, forced-pooling, or otherwise) or until a non-standard unit, eliminating such interest, has been approved by the Division.



OPERATOR CERTIFICATION

I hereby certify that the information contained herein is true and complete to the best of my knowledge and belief.

Signature
Kathie Craft

Printed Name
Kathie Craft

Position
Land Administrator

Company
Nearburg Producing Co.

Date
August 26, 1991

SURVEYOR CERTIFICATION

I hereby certify that the well location shown on this plat was plotted from field notes of actual surveys made by me or under my supervision, and that the same is true and correct to the best of my knowledge and belief.

8-22-91

Date Surveyed

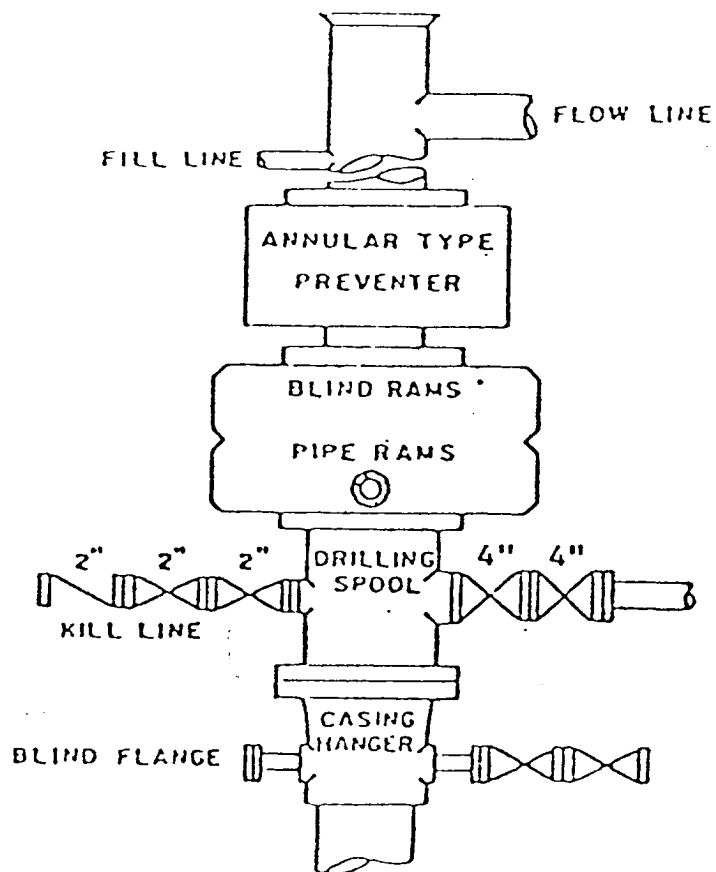
Signature & Seal of
Professional Surveyor

Ronald J. Eidson
Certificate No. JOHN W. WEST, 676
RONALD J. EIDSON, 3239

0 330 660 990 1320 1650 1980 2310 2640 2000 1500 1000 500 0

BLOWOUT PREVENTER SKETCH
Nearburg Producing Company

MAYER 24 WELL NO. 1



900 SERIES