

Submit to Appropriate
District Office
State Lease - 6 copies
Fee Lease - 5 copies

State of New Mexico
Energy, Minerals and Natural Resources Department

Form C-101
Revised 1-1-89

OIL CONSERVATION DIVISION

P.O. Box 2088
Santa Fe, New Mexico 87504-2088

DISTRICT I
P.O. Box 1980, Hobbs, NM 88240

DISTRICT II
P.O. Drawer DD, Artesia, NM 88210

DISTRICT III
1000 Rio Brazos Rd., Aztec, NM 87410

SEP - 5 1991

API NO. (assigned by OCD on New Wells) 30-15-26827	
5. Indicate Type of Lease STATE <input type="checkbox"/> FEE <input checked="" type="checkbox"/>	
6. State Oil & Gas Lease No.	
7. Lease Name or Unit Agreement Name Pincushion "AHN"	
8. Well No. 3	
9. Pool name or Wildcat N. Dagger Draw Upper Penn	

10. Proposed Depth 8100'	11. Formation Cisco - Canyon	12. Rotary or C.T. Rotary
13. Elevations (Show whether DF, RT, GR, etc.) 3554'	14. Kind & Status Plug. Bond Blanket	15. Drilling Contractor Not designated
16. Approx. Date Work will start ASAP		

PROPOSED CASING AND CEMENT PROGRAM					
SIZE OF HOLE	SIZE OF CASING	WEIGHT PER FOOT	SETTING DEPTH	SACKS OF CEMENT	EST. TOP
14 3/4"	9 5/8"	36# J-55	1100'	1100sx	Circulated
8 3/4"	7"	23-26 J-55&N-80	TD	As Warranted	

Yates Petroleum Corporation proposes to drill and test the Canyon and intermediate formations. Approximately 1100' of surface casing will be set and cement circulated to shut off gravel and cavings. If commercial, production casing will be run and cemented, will perforate and stimulate as needed for production.

MUD PROGRAM: FW Gel/LCM to 1100'; FW to 5000'; cut Brine to 7200'; SW/Gel/Starch to TD. *Post ID-1 9-13-91 New 1004 API*

BOP PROGRAM: BOP's and hydrill will be installed on 9 5/8" casing and tested daily.

APPROVAL VALID FOR 180 DAYS
PERMIT EXPIRES 3/9/92
UNLESS DRILLING UNDERWAY

IN ABOVE SPACE DESCRIBE PROPOSED PROGRAM: IF PROPOSAL IS TO DEEPEN OR PLUG BACK, GIVE DATA ON PRESENT PRODUCTIVE ZONE AND PROPOSED NEW PRODUCTIVE ZONE. GIVE BLOWOUT PREVENTER PROGRAM, IF ANY.

I hereby certify that the information above is true and complete to the best of my knowledge and belief.

SIGNATURE Ken Beardemphl TITLE Landman DATE 9-4-91
TYPE OR PRINT NAME Ken Beardemphl TELEPHONE NO. 748-1471

(This space for State Use)

ORIGINAL SIGNED BY
MIKE WILLIAMS
SUPERVISOR, DISTRICT II

APPROVED BY _____ TITLE _____ DATE SEP - 9 1991

CONDITIONS OF APPROVAL, IF ANY:

NOTIFY N.M.O.C.D. IN SUFFICIENT
TIME TO WITNESS CEMENTING THE
9 5/8 CASING

Submit to Appropriate
District Office
State Lease - 4 copies
Fee Lease - 3 copies

State of New Mexico
Energy, Minerals and Natural Resources Department

Form C-102
Revised 1-1-89

OIL CONSERVATION DIVISION

P.O. Box 2088
Santa Fe, New Mexico 87504-2088

DISTRICT I
P.O. Box 1980, Hobbs, NM 88240

DISTRICT II
P.O. Drawer DD, Artesia, NM 88210

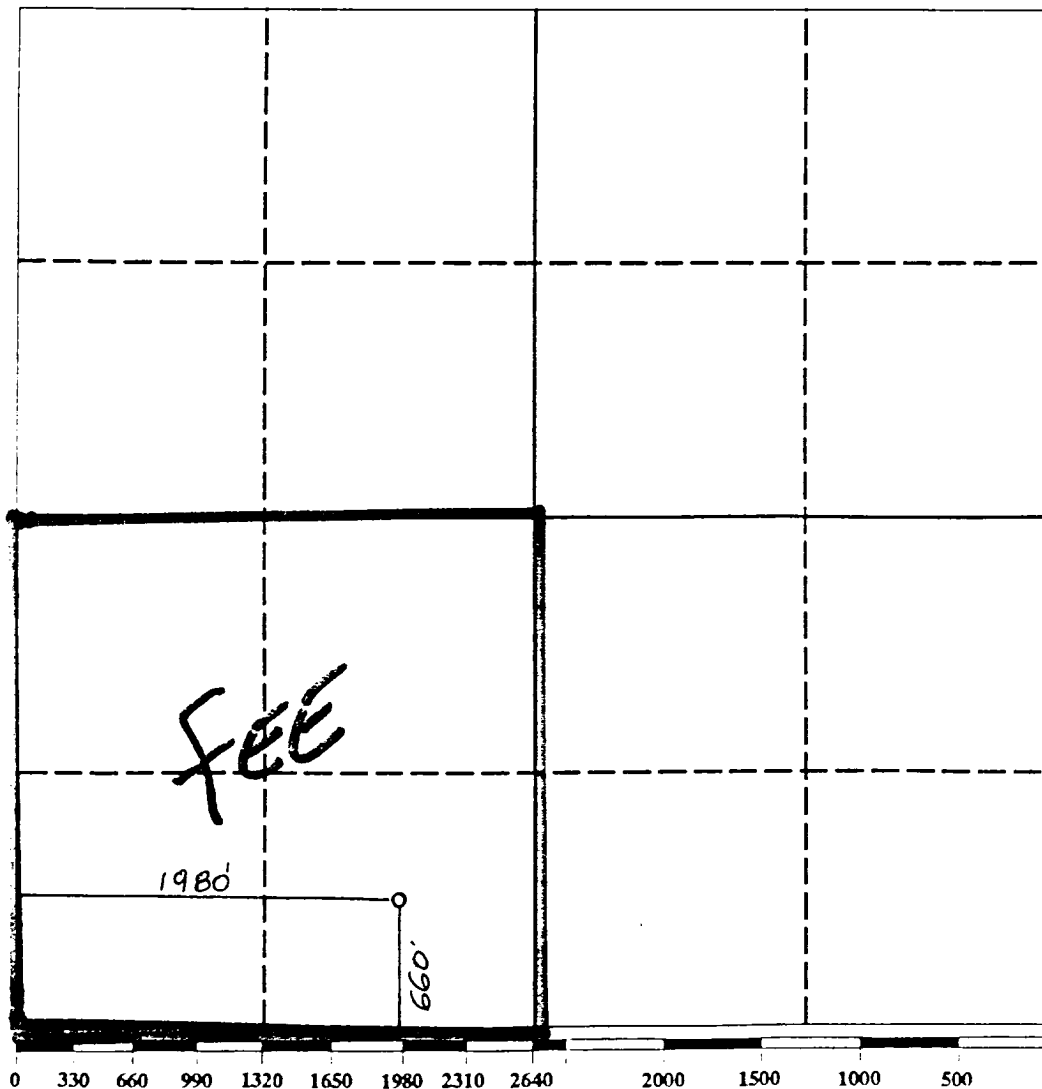
DISTRICT III
1000 Rio Brazos Rd., Aztec, NM 87410

WELL LOCATION AND ACREAGE DEDICATION PLAT

All Distances must be from the outer boundaries of the section

Operator YATES PETROLEUM CORPORATION			Lease PINCUSHION AHN		Well No. 3
Unit Letter N	Section 30	Township 19 SOUTH	Range 25 EAST	County EDDY COUNTY, N.M.	
Actual Footage Location of Well: 1980 feet from the WEST line and 660 feet from the SOUTH line					
Ground level Elev. 3554.	Producing Formation Cisco Canyon		Pool N. Dagger Draw Upper Penn		Dedicated Acreage: 160 Acres

- Outline the acreage dedicated to the subject well by colored pencil or hachure made on the plat below
- If more than one lease is dedicated to the well, outline each and identify the ownership thereof (both as to working interest and royalty).
- If more than one lease of different ownership is dedicated to the well, have the interest of all owners been consolidated by communitization, unitization, force-pooling, etc?
☐ Yes ☐ No If answer is "yes" type of consolidation _____
If answer is "no" list the owners and tract descriptions which have actually been consolidated. (Use reverse side of this form if necessary.) _____
No allowable will be assigned to the well until all interests have been consolidated (by communitization, unitization, forced-pooling, or otherwise) or until a non-standard unit, eliminating such interest, has been approved by the Division.



OPERATOR CERTIFICATION

I hereby certify that the information contained herein is true and complete to the best of my knowledge and belief.

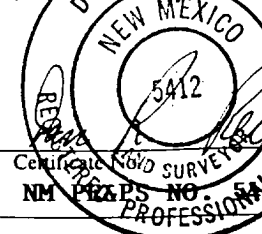
Signature *Ken Beardleugh*
Printed Name **Ken Beardleugh**
Position **Land man**
Company **Yates Pet. Corp.**
Date **9-4-91**

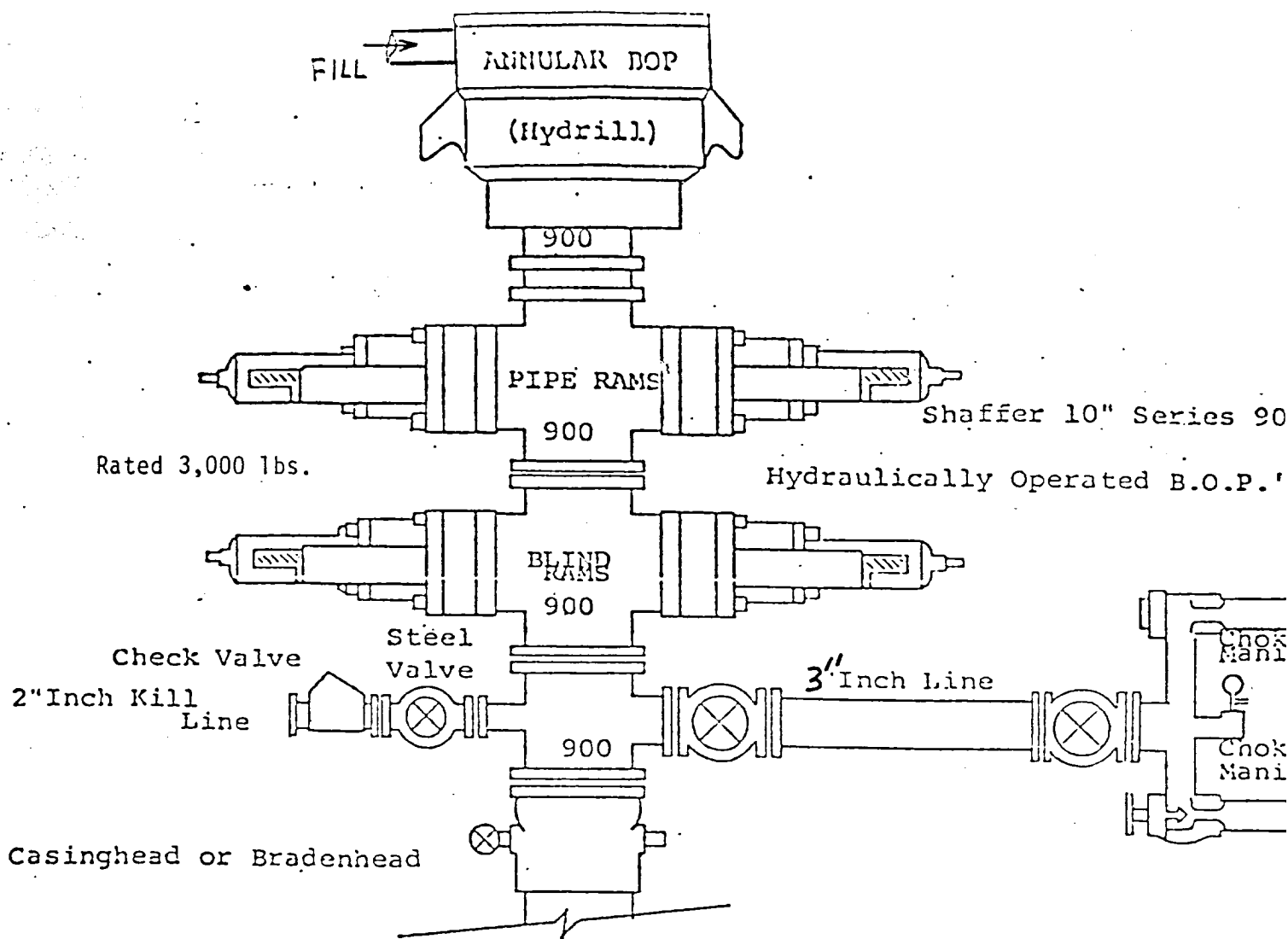
SURVEYOR CERTIFICATION

I hereby certify that the well location shown on this plat was plotted from field notes of actual surveys made by me or under my supervision, and that the same is true and correct to the best of my knowledge and belief.

Date Surveyed
AUGUST 30, 1991

Signature *ASAI BREDDY*
Professional Surveyor





THE FOLLOWING CONSTITUTE MINIMUM BLOWOUT PREVENTER REQUIREMENTS

1. All preventers to be hydraulically operated with secondary manual control installed prior to drilling out from under casing.
2. Choke outlet to be a minimum of 3" diameter.
3. Kill line to be of all steel construction of 2" minimum diameter.
4. All connections from operating manifolds to preventers to be all steel hole or tube a minimum of one inch in diameter.
5. The available closing pressure shall be at least 15% in excess of that required with sufficient volume to operate the B.O.P.'s.
6. All connections to and from preventer to have a pressure rating equivalent to that of the B.O.P.'s.
7. Inside blowout preventer to be available on rig floor.
8. Operating controls located a safe distance from the rig floor.
9. Hole must be kept filled on trips below intermediate casing.

EXHIBIT
B