

Submitted to Appropriate
District Office
State Lease - 4 copies
Fee Lease - 3 copies

State of New Mexico
Energy, Minerals and Natural Resources Department

Form C-102
Revised 1-1-89

OIL CONSERVATION DIVISION

P.O. Box 2088

Santa Fe, New Mexico 87504-2088

DISTRICT I

P.O. Box 1980, Hobbs, NM 88240

DISTRICT II

P.O. Drawer DD, Artesia, NM 88210

DISTRICT III

1000 Rio Brazos Rd., Aztec, NM 87410

WELL LOCATION AND ACREAGE DEDICATION PLAT

All Distances must be from the outer boundaries of the section

Operator YATES PETROLEUM CORPORATION			Lease ROSS EG FEDERAL		Well No. 7
Unit Letter F	Section 20	Township 19 SOUTH	Range 25 EAST	County EDDY COUNTY, NM	
Actual Footage Location of Well: 1980 feet from the NORTH line and 1980 feet from the WEST line Ground level Elev. 3565. Producing Formation Cuc. Canyon Pool North Dagon Draw Upper Penn Dedicated Acreage: 160 Acres					

1. Outline the acreage dedicated to the subject well by colored pencil or hachure marks on the plat below.

2. If more than one lease is dedicated to the well, outline each and identify the ownership thereof (both as to working interest and royalty).

3. If more than one lease of different ownership is dedicated to the well, have the interest of all owners been consolidated by communitization, unitization, force-pooling, etc.?

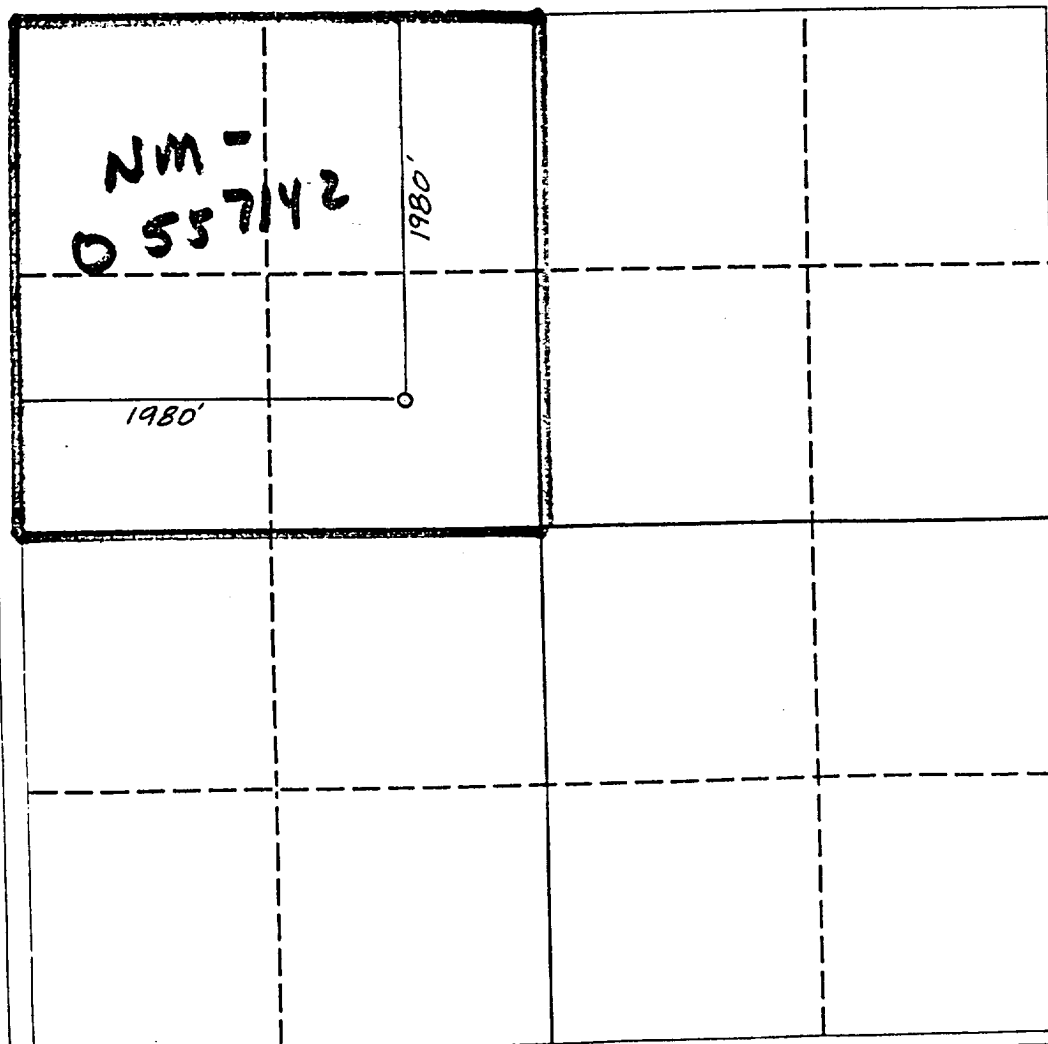
☐ Yes

☒ No

If answer is "yes" type of consolidation

If answer is "no" list the owners and tract descriptions which have actually been consolidated. (Use reverse side of this form if necessary.)

No allowable will be assigned to the well until all interests have been consolidated (by communitization, unitization, forced-pooling, or otherwise) or until a non-standard unit, eliminating such interest, has been approved by the Division.



OPERATOR CERTIFICATION

I hereby certify that the information contained herein is true and complete to the best of my knowledge and belief.

Signature

Printed Name

Ken Beardemph1

Position

Landman

Company

YATES PETROLEUM CORPORATION

Date

January 27, 1992

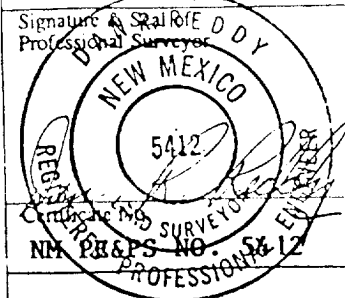
SURVEYOR CERTIFICATION

I hereby certify that the well location shown on this plat was plotted from field notes actual surveys made by me or under my supervision, and that the same is true and correct to the best of my knowledge and belief.

Date Surveyed

JANUARY 23, 1992

Signature of Professional Surveyor



NEW MEXICO PROFESSIONAL SURVEYOR NO. 5412



LTR

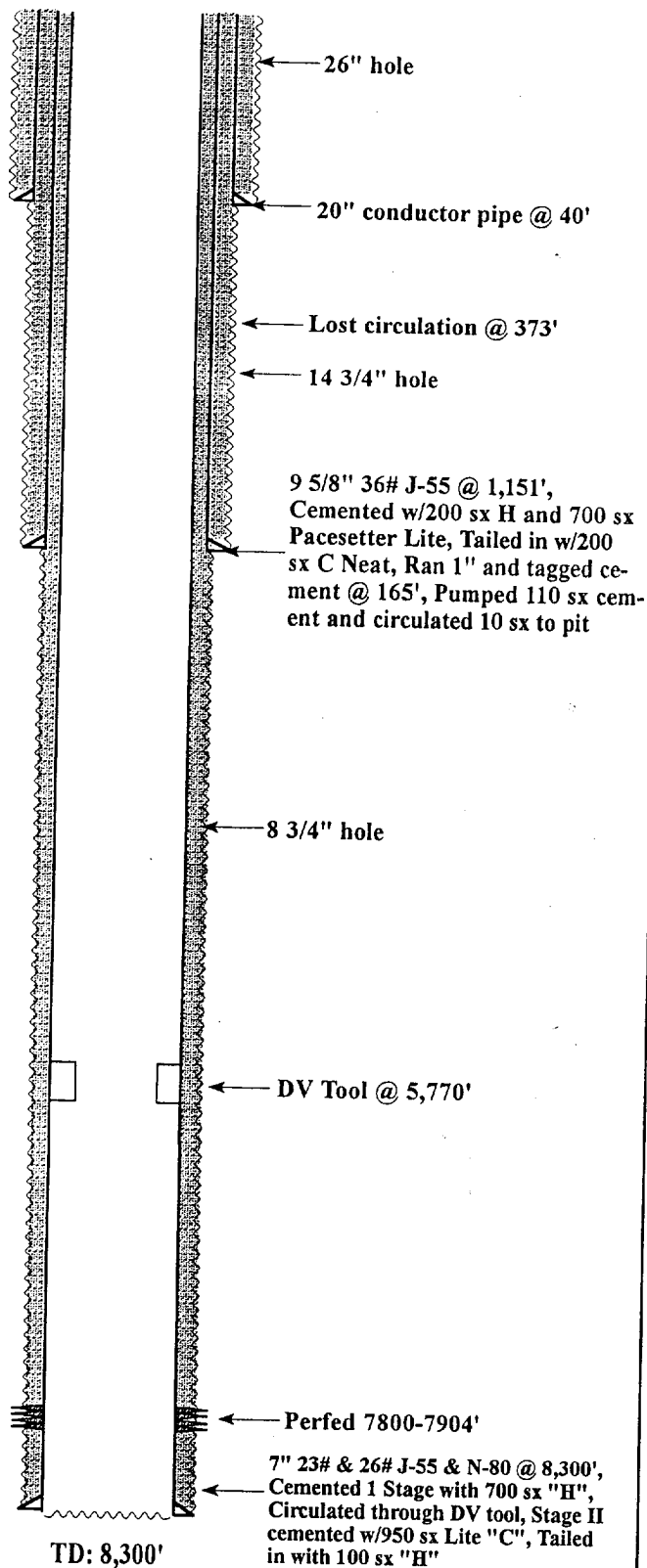


Job separation sheet

YATES PETROLEUM CORPORATION

Ross EG Federal #7

Section 20 T19S-R25E, 1,980' N & 1,980' W



Comments

6/92 & 7/92

TIH w/bit, stabilizer, drill collars and 2 7/8" tubing to DV tool at 5770'. Rigged up power swivel. Drilled out DV tool. Tested casing to 1500#. TOH w/2 7/8" tubing, drill collars, stabilizer and bit. TIH w/bit scraper & 2 7/8" tubing to 8195'. TOH w/2 7/8" tubing, scraper & bit. Rigged up wireline. TIH w/logging tool. Pressure casing to 1000# & ran CBL/CCL/GR from 8150-5000'. TOH w/logging tool. TIH w/4" casing guns & perfed 7800-7904' w/54 holes. TIH w/RBP, packer & 2 7/8" tubing. TIH w/1 11/16" GR logging tool. Correlate RBP into place at 7822'. TOH w/logging tools. Set RBP @ 7831'. Tested RBP to 1500#. Spot 5 bbls acid across perfs. Set packer at 7876'. Acidized perfs 7890-7904' w/8000 gals 20% HCL-NEFE + scale inhibitor + 14 ball sealers. Communicated w/2940 gals of acid gone. Unset packer 7876'. Dropped down and unset RBP @ 7831'. Moved & set RBP @ 7876'. Set packer @ 7839'. Acidized perfs 7850-7866' w/600 gals 20% HCL-NEFE + scale inhibitor. Unset packer @ 7839'. Dropped down and unset RBP @ 7876'. Moved and set RBP @ 7839'. Set packer @ 7746'. Acidized perfs 7800-7830' w/600 gals 20% HCL-NEFE + scale inhibitor. Unset packer @ 7746'. Dropped down and unset RBP at 7839'. Set RBP @ 7876'. Set packer at 7746'. Acidized perfs 7800-7846' w/18000 gals 20% HCL-NEFE + scale inhibitor + 65 balls. Balled out. Surged balls off. Unset packer @ 7746'. Dropped down and unset RBP @ 7876'. Moved and set RBP @ 7956'. Set packer at 7746'. Swabbed. Unset packer at 7746'. Dropped down and unset RBP at 7956'. TOH w/2 7/8" tubing, packer and RBP. TOH w/2 7/8" tubing and sub pump. TIH w/RBP, packer and 2 7/8" tubing to approx. 7940'. Unset packer @ 7772'. Dropped down and reset packer @ 7841'. Unset packer @ 7841'. Dropped down & unset RBP @ 7935'. TOH w/2 7/8" tubing, packer and RBP. Turned well over to production.

CASING

7" 26# N-80	751.78'
7" 26# J-55	2610.44'
7" 23# J-55	3766.90'
7" 26# J-55	1186.82'



LTR



Job separation sheet

YATES PETROLEUM CORPORATION
Ross EG Federal Com.#7 (Re-entry)
Deepening of a Producing Well
1980' FNL & 1980' FWL
Section 20-T19S-R25E
Eddy County, New Mexico

1. The estimated tops of geologic markers are as follows:

Strawn	8217'
Atoka	8797'
Morrow Clastics	9097'
Mississippian Lime	9377'
TD	9500'

2. The estimated depths at which anticipated water, oil or gas formations are expected to be encountered:

Water:	275'
Oil or Gas:	9097'-9950'

3. Pressure Control Equipment: BOPE will be installed on the 9 5/8" casing and rated for 3000# BOP systems will be consistent with API RP 53. Pressure tests will be conducted before drilling out from under all casing strings which are set and cemented in place. Blowout preventor controls will be installed prior to drilling the surface plug and will remain in use until the well is completed or abandoned. Preventors will be inspected and operated at least daily to ensure good mechanical working order, and this inspection recorded on the daily drilling report. See Exhibit B.

Auxiliary Equipment:

- A. Auxiliary Equipment: Kelly cock, pit level indicators, flow sensor equipment, and a sub with full opening valve to fit the drill pipe and collars will be available on the rig floor in the open position at all times for use when kelly is not in use.

4. THE PROPOSED CASING AND CEMENTING PROGRAM:

- A. Casing Program: (All New)

<u>Hole Size</u>	<u>Casing Size</u>	<u>Wt./Ft</u>	<u>Grade</u>	<u>Thread</u>	<u>Interval</u>	<u>Length</u>
14 3/4"	9 5/8"	36#	J55	ST&C	0-1151'	1151' In Place.
8 3/4"	7"	23+26#	J55+N80	ST&C	0-8300'	8300' In Place.
6 1/8"	4 1/2" Liner	11.6#	N80	ST&C	7750'-9500'	1750'

Minimum Casing Design Factors: Collapse 1.125, Burst 1.0, Tensile Strength 1.8

- B. CEMENTING PROGRAM:
Surface casing: 1210 sx (in place).
Intermediate Casing: 1650 sx (in place).
Production Liner: 200 sx.