

NO. OF COPIES RECEIVED	
DISTRIBUTION	
SANTA FE	
FILE	1
U.S.G.S.	2
LAND OFFICE	
OPERATOR	

NEW MEXICO OIL CONSERVATION COMMISSION

RECEIVED

SEP 24 1982

O. C. D.

ARTESIA, OFFICE

APPLICATION FOR PERMIT TO DRILL, DEEPEN, OR PLUG BACK

30-015-24284

Form C-101
Revised 1-1-65

5A. Indicate Type of Lease
STATE ☐ FEE ☒

5. State Oil & Gas Lease No.

7. Unit Agreement Name

8. Farm or Lease Name

Dagger Draw

9. Well No.

4

10. Field and Pool, or Wildcat

N. Dagger Draw Upper Penn

12. County

Eddy

1a. Type of Work
b. Type of Well
OIL WELL ☒ GAS WELL ☐ OTHER ☐
DEEPEN ☐ PLUG BACK ☐
SINGLE ZONE ☒ MULTIPLE ZONE ☐
2. Name of Operator
CONOCO INC. ✓
3. Address of Operator
P. O. Box 460, Hobbs, N.M. 88240
4. Location of Well
UNIT LETTER L LOCATED 1980 FEET FROM THE South LINE
AND 660 FEET FROM THE West LINE OF SEC. 19 TWP. 19S RGE. 25E NMPM
19. Proposed Depth
7930'
19A. Formation
Cisco
20. Rotary or C.T.
Rotary
21. Elevations (Show whether DF, RT, etc.)
3576' GL
21A. Kind & Status Plug. Bond
Blanket
21B. Drilling Contractor
Nov. 15, 1982
22. Approx. Date Work will start

PROPOSED CASING AND CEMENT PROGRAM

SIZE OF HOLE	SIZE OF CASING	WEIGHT PER FOOT	SETTING DEPTH	SACKS OF CEMENT	EST. TOP
17 1/2"	13 3/8"	54.5 #	450'	4975x	Circulate
12 1/4"	8 5/8"	24 #	1250'	7205x	Circulate
7 7/8"	5 1/2"	17 #	7930'	16125x	750'

It is proposed to drill a straight hole to a TD of 7930' and complete it as a Cisco oil well.

See attachments for a location plat and BOP specs.

APPROVAL VALID FOR 180 DAYS
PERMIT EXPIRES 4-5-83
UNLESS DRILLING UNDERWAY

IN ABOVE SPACE DESCRIBE PROPOSED PROGRAM: IF PROPOSAL IS TO DEEPEN OR PLUG BACK, GIVE DATA ON PRESENT PRODUCTIVE ZONE AND PROPOSED NEW PRODUCTIVE ZONE. GIVE BLOWOUT PREVENTER PROGRAM, IF ANY.

I hereby certify that the information above is true and complete to the best of my knowledge and belief.

Signed W. A. Butterfield Title Administrative Supervisor Date 9-23-82

(This space for State Use)

APPROVED BY Mike Walker TITLE OIL AND GAS INSPECTOR DATE OCT 5 1982

CONDITIONS OF APPROVAL, IF ANY:

Notify N.M.O.C.C. in sufficient time to witness cementing the 3 5/8" casing

NEW MEXICO OIL CONSERVATION COMMISSION
WELL LOCATION AND ACREAGE DEDICATION PLAT

Form C-102
Supersedes C-120
Effective 1-1-65

All distances must be from the outer boundaries of the Section

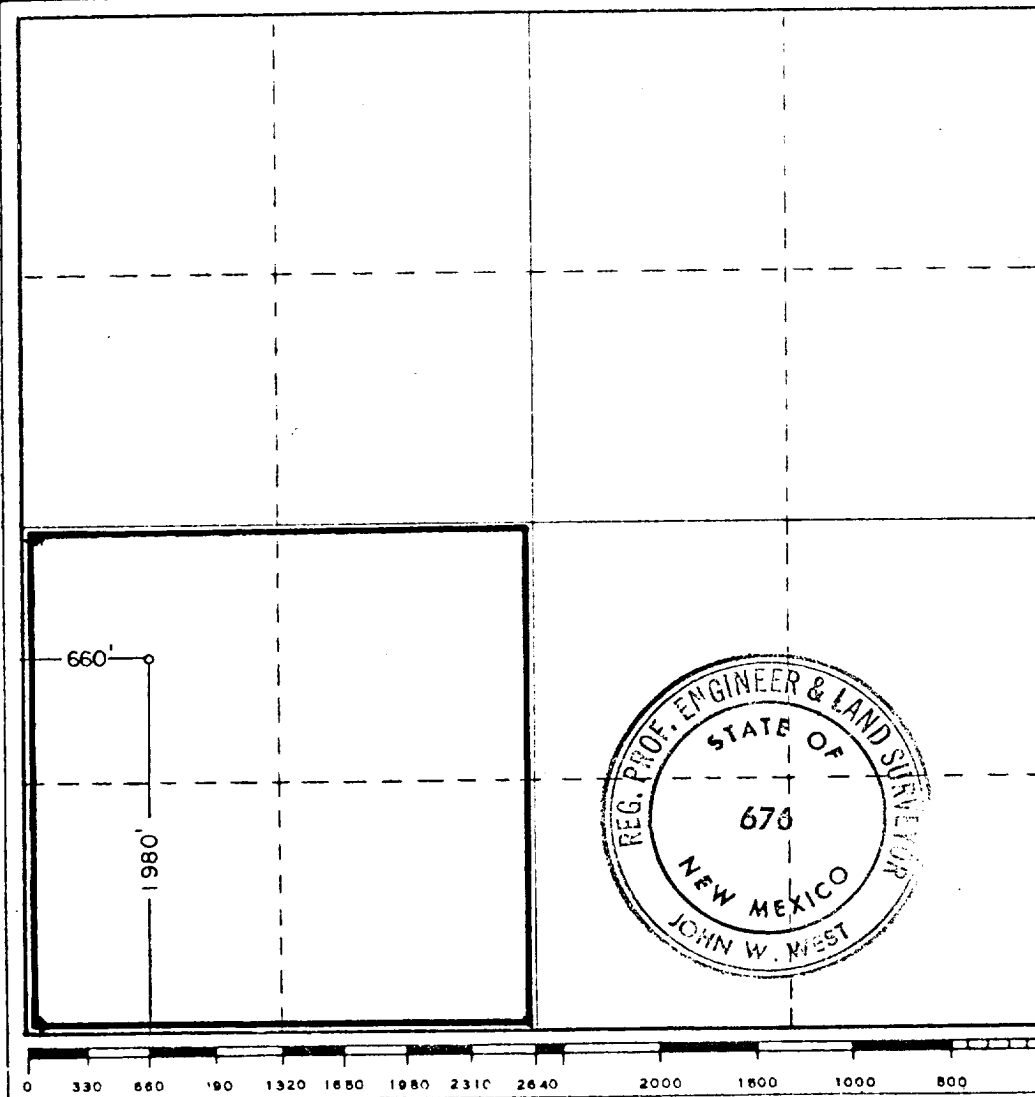
Operator CONOCO, INC.		Lease DAGGER DRAW		Well No. 4
Unit Letter L	Section 19	Township 19 SOUTH	Range 25 EAST	County EDDY
Actual Footage Location of Well: 1980 feet from the SOUTH line and 660 feet from the WEST line				
Ground Level Elev. 3575.6	Producing Formation CISCO		Foot N. Dagger Draw Upper Penn	Dedicated Acreage: 160 Acres

1. Outline the acreage dedicated to the subject well by colored pencil or hatchure marks on the plat below.
2. If more than one lease is dedicated to the well, outline each and identify the ownership thereof (both as to working interest and royalty).
3. If more than one lease of different ownership is dedicated to the well, have the interests of all owners been consolidated by communitization, unitization, force-pooling, etc?

☐ Yes ☐ No If answer is "yes," type of consolidation _____

If answer is "no," list the owners and tract descriptions which have actually been consolidated. (Use reverse side of this form if necessary.) _____

No allowable will be assigned to the well until all interests have been consolidated (by communitization, unitization, forced-pooling, or otherwise) or until a non-standard unit, eliminating such interests, has been approved by the Commission.



CERTIFICATION

I hereby certify that the information contained herein is true and complete to the best of my knowledge and belief.

Name
John B. Duthie
Position
Administrative Supervisor
Company
Conoco Inc.

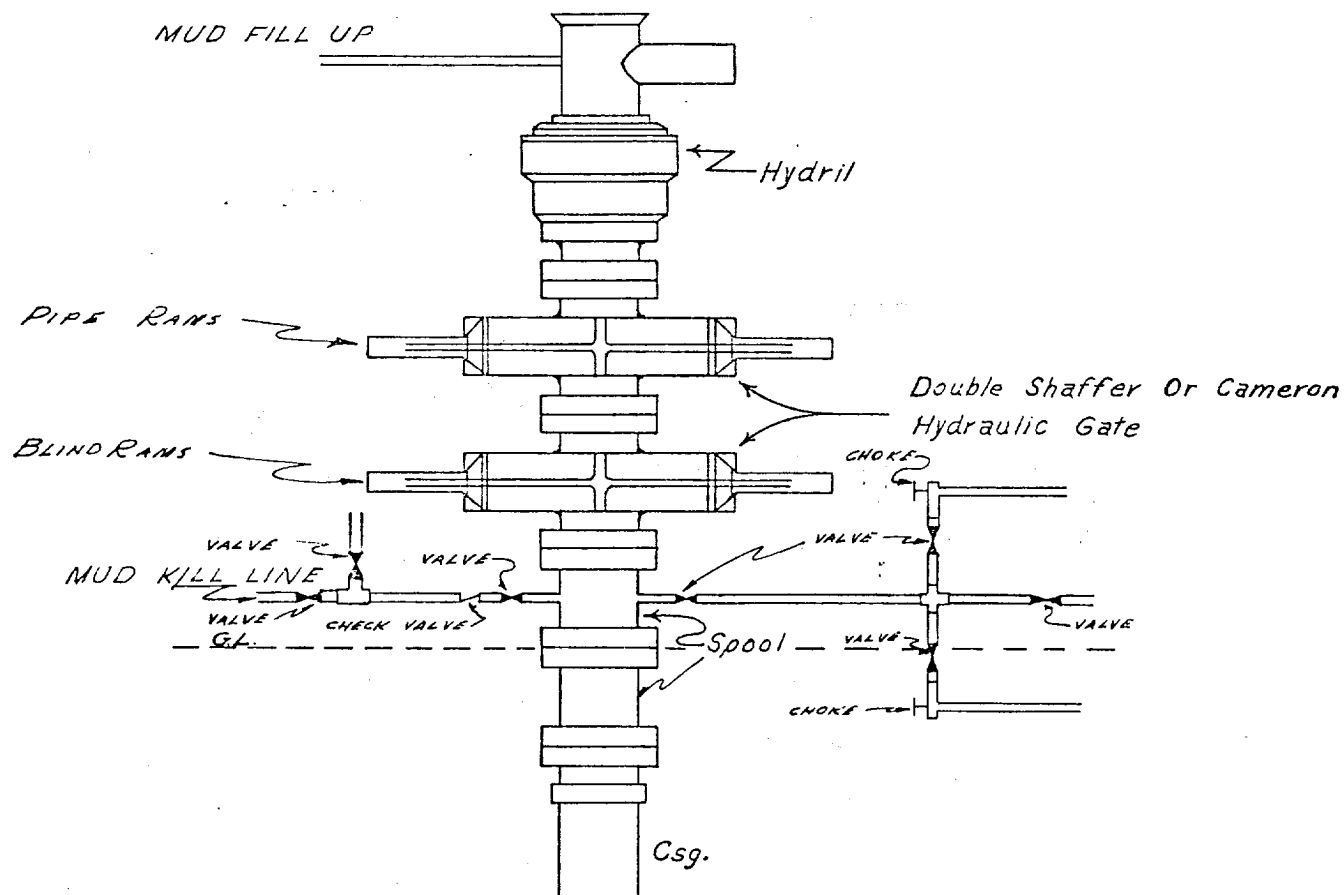
Date
9-24-82

I hereby certify that the well location shown on this plat was plotted from field notes of actual surveys made by me or under my supervision, and that the same is true and correct to the best of my knowledge and belief.

Date Surveyed
3-1-82
Registered Professional Engineer and/or Land Surveyor

John W. West
Certificate No. **JOHN W. WEST 676**
PATRICK A. ROMERO 6663
Ronald J. Eidson 3239

CONTINENTAL OIL COMPANY
Blow-out Preventer Specifications



API Series 900

NOTE:

Manual and Hydraulic controls with closing unit no less than 75' from well head.
Remote controls on rig floor.

DUE TO SUBSTRUCTURE CLEARANCE,
HYDRIL MAY OR MAY NOT BE USED.