

UNITED STATES  
DEPARTMENT OF THE INTERIOR  
BUREAU OF LAND MANAGEMENT

APPLICATION FOR PERMIT TO DRILL, DEEPEN, OR PLUG BACK

1a. TYPE OF WORK

DRILL ☒

DEEPEN ☐

PLUG BACK ☐

b. TYPE OF WELL

OIL  
WELL ☒

GAS  
WELL ☐

OTHER

SINGLE  
ZONE ☐

MULTIPLE  
ZONE ☐

2. NAME OF OPERATOR

Yates Petroleum Corporation

3. ADDRESS OF OPERATOR

105 South Fourth Street, Artesia, NM 88210

4. LOCATION OF WELL (Report location clearly and in accordance with any State requirements.)\*

At surface

1980' FSL and 1980' FEL  
At proposed prod. zone  
same

14. DISTANCE IN MILES AND DIRECTION FROM NEAREST TOWN OR POST OFFICE\*

Approximately 31 miles southwest of Artesia, NM

15. DISTANCE FROM PROPOSED\*

LOCATION TO NEAREST

PROPERTY OR LEASE LINE, FT.  
(Also to nearest drlg. unit line, if any)

1980'

18. DISTANCE FROM PROPOSED LOCATION\*

TO NEAREST WELL, DRILLING, COMPLETED,  
OR APPLIED FOR, ON THIS LEASE, FT.

19. PROPOSED DEPTH

8300'

17. NO. OF ACRES ASSIGNED  
TO THIS WELL

320

20. ROTARY OR CABLE TOOLS

Rotary

21. ELEVATIONS (Show whether DF, RT, GR, etc.)

3641'

22. APPROX. DATE WORK WILL START\*

ASAP

23.

PROPOSED CASING AND CEMENTING PROGRAM

Roswell Controlled Water Basin  
QUANTITY OF CEMENT

SIZE OF HOLE	SIZE OF CASING	WEIGHT PER FOOT	SETTING DEPTH	QUANTITY OF CEMENT
14 3/4"	9 5/8"	36# J-55	1100'	1100 sacks (circulated)
8 3/4"	7"	23-26#	TD	As warranted (See slips)
		J-55 & N-80		

Yates Petroleum Corporation proposes to drill and test the Canyon and Intermediate formations. Approximately 1100' of surface casing will be set and cement circulated to shut off gravel and cavings. If commercial, production casing will be run and cemented, will perforate and stimulate as needed for production.

MUD PROGRAM: FW gel/LCM to 1100'; FW to 5000'; cut Brine to 7200'; SW gel/Starch to TD.

BOP PROGRAM: BOP's and hydril will be installed on 9 5/8" casing and tested daily.

Post ID-1  
7-24-92  
New Line & API

IN ABOVE SPACE DESCRIBE PROPOSED PROGRAM: If proposal is to deepen or plug back, give data on present productive zone and proposed new productive zone. If proposal is to drill or deepen directionally, give pertinent data on subsurface locations and measured and true vertical depths. Give blowout preventer program, if any.

24. SIGNED Ken Beardsley TITLE Landman DATE 6-1-92

(This space for Federal or State office use)

PERMIT NO.

APPROVAL DATE

APPROVED BY

TITLE

DATE

APPROVAL SUBJECT TO

GENERAL REQUIREMENTS AND

SPECIAL STIPULATIONS

ATTACHED

\*See Instructions On Reverse Side

Title 18 U.S.C. Section 1001, makes it a crime for any person knowingly and willfully to make to any department or agency of the United States any false, fictitious or fraudulent statements or representations as to any matter within its jurisdiction.

Submit to Appropriate  
District Office  
State Lease - 4 copies  
Fee Lease - 3 copies

State of New Mexico  
Energy, Minerals and Natural Resources Department

Form C-102  
Revised 1-1-89

OIL CONSERVATION DIVISION

P.O. Box 2088

Santa Fe, New Mexico 87504-2088

DISTRICT I

P.O. Box 1980, Hobbs, NM 88240

DISTRICT II

P.O. Drawer DD, Artesia, NM 88210

DISTRICT III

1000 Rio Brazos Rd., Aztec, NM 87410

WELL LOCATION AND ACREAGE DEDICATION PLAT

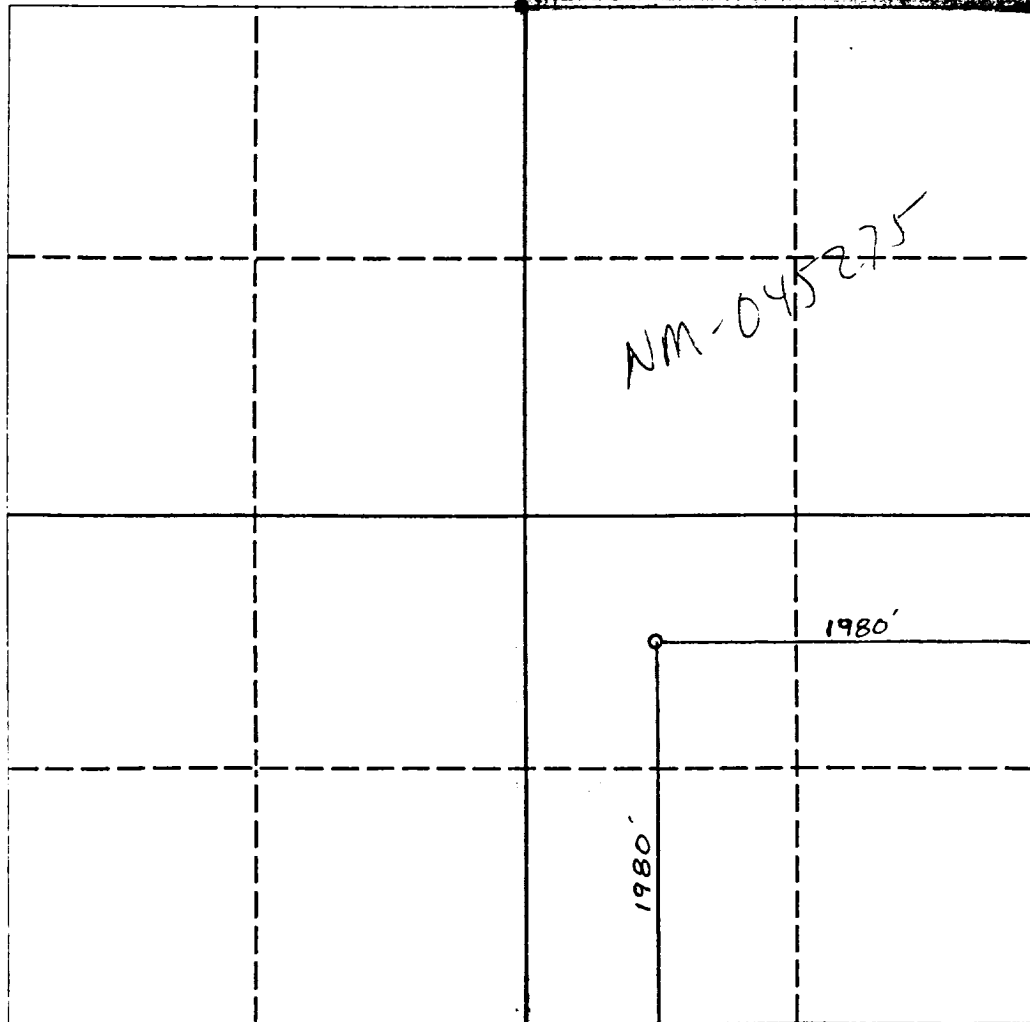
All Distances must be from the outer boundaries of the section

Operator <b>YATES PETROLEUM CORPORATION</b>			Lease <b>CONOCO AGK FEDERAL</b>		Well No. <b>11</b>
Unit Letter <b>J</b>	Section <b>26</b>	Township <b>20 SOUTH</b>	Range <b>24 EAST</b>	County <b>EDDY COUNTY, NM</b>	
Actual Footage Location of Well: <b>1980</b> feet from the <b>SOUTH</b> line and <b>1980</b> feet from the <b>EAST</b> line					
Ground level Elev. <b>3641.</b>	Producing Formation <b>Cisco Canyon</b>		Pool <b>South Dagger Draw Upper Penn</b>	Dedicated Acreage: <b>320</b> Acres	

- Outline the acreage dedicated to the subject well by colored pencil or hachure marks on the plat below.
- If more than one lease is dedicated to the well, outline each and identify the ownership thereof (both as to working interest and royalty).
- If more than one lease of different ownership is dedicated to the well, have the interest of all owners been consolidated by communitization, unitization, force-pooling, etc.?  
☒ Yes ☐ No If answer is "yes" type of consolidation Communitization

If answer is "no" list the owners and tract descriptions which have actually been consolidated. (Use reverse side of this form if necessary.)

No allowable will be assigned to the well until all interests have been consolidated (by communitization, unitization, forced-pooling, or otherwise) or until a non-standard unit, eliminating such interest, has been approved by the Division.



OPERATOR CERTIFICATION

I hereby certify that the information contained herein is true and complete to the best of my knowledge and belief.

Signature

Printed Name

Position

Company

Date

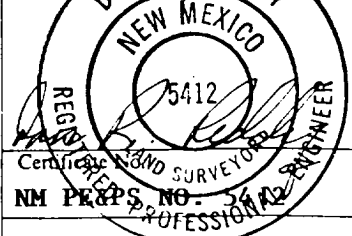
SURVEYOR CERTIFICATION

I hereby certify that the well location shown on this plat was plotted from field notes of actual surveys made by me or under my supervision, and that the same is true and correct to the best of my knowledge and belief.

Date Surveyed

**MAY 25, 1992**

Signature of Professional Surveyor



**YATES PETROLEUM CORPORATION**

**Conoco "AGK" Federal #11  
1980' FSL and 1980' FEL  
Section 26-T20S-R24E  
Eddy County, New Mexico**

In conjunction with Form 3160-3, Application for Permit to Drill subject well, Yates Petroleum Corporation submits the following ten items of pertinent information in accordance with BLM requirements.

1. The geological surface formation is Alluvium:
2. The estimated tops of geologic markers are as follows:

San Andres	621'
Glorieta	2,241'
Bone Spring Lime	3,726'
3rd Bone Springs Sand	5,748'
Wolfcamp Lime	6,228'
Canyon Lime	7,560'
TD	8,200'
3. The estimated depths at which anticipated water, oil or gas formations are expected to be encountered:

Water:	Approximately 275'
Oil or Gas:	Canyon
4. Proposed Casing Program: See Form 3160-3.
5. Pressure Control Equipment: See Form 3160-3 and Exhibit B.
6. Mud Program: See Form 3160-3.
7. Auxiliary Equipment: Kelly Cock; pit level indicators and flow sensor equipment; sub with full-opening valve on floor, drill pipe connections.
8. Testing, Logging and Coring Program:

Samples: 10' samples from 400' to TD.

DST's: As warranted by drilling breaks and shows.

Coring: As warranted.

Logging: CNL-LDT from TD to casing, with GR-CNL up to surface;  
DLL with RxO from TD to casing.
9. No abnormal pressures or temperatures are anticipated.
10. Anticipated starting date: As soon as possible after approval.

## MULTI-POINT SURFACE USE AND OPERATIONS PLAN

Yates Petroleum Corporation  
Conoco "AGK" Federal #11  
1980' FSL and 1980' FEL  
Section 26-T20S-R24E  
Eddy County, New Mexico

This plan is submitted with Form 3160-3, Application for Permit to Drill, covering the above described well. The purpose of this plan is to describe the location of the proposed well, the proposed construction activities and operations plan, the magnitude of the surface disturbance involved and the procedures to be followed in rehabilitating the surface after completion of the operations, so that a complete appraisal can be made of the environmental effect associated with the operations.

### 1. EXISTING ROADS:

Exhibit A is a portion of BLM map showing the well and roads in the vicinity of the proposed location. The proposed wellsite is located approximately 30 miles southwest of Artesia, New Mexico, and the access route to the location is indicated in red and green on Exhibit A.

#### DIRECTIONS:

1. Go south of Artesia on Highway 285 for approximately 15 miles to Rock Daisy Road.
2. Turn west and go approximately 8.2 miles to Sawbucks Road.
3. Turn South approximately 3.4 miles to Pickett Road.
4. Turn east and go approximately 1 mile.
5. Turn south on lease road for approximately 1 1/2 miles.
6. Turn east to Conoco "AGK" Federal #3 location.
7. New road starts here.

### 2. PLANNED ACCESS ROAD

- A. The proposed new access will be approximately 1000' in length from point of origin to the southeast edge of drilling pad. The road will lie in an east to west direction.
- B. The proposed new access approximately 1000' in length from point of origin to the southwest edge of drilling pad. The road will lie in a north to south direction.
- C. The new road will be 14 feet in width (driving surface) and will be adequately drained to control runoff and soil erosion.
- D. The new road will be bladed with drainage on one side. No traffic turnout will be built.

### 3. LOCATION OF EXISTING WELL

- A. There is drilling activity within a one-mile radius of the wellsite.
- B. Exhibit D shows existing wells within a one-mile radius of the proposed wellsite.

### 4. LOCATION OF EXISTING AND/OR PROPOSED FACILITIES

- A. There are production facilities on this lease at the present time.
- B. In the event that the well is productive oil, a gas or diesel self-contained unit will be used to provide the necessary power. No power will be required if the well is productive of gas.

### 5. LOCATION AND TYPE OF WATER SUPPLY:

- A. It is planned to drill the proposed well with a fresh water system. The water will be obtained from commercial sources and will be hauled to the location by truck over the existing and proposed roads shown in Exhibit A.

6. SOURCE OF CONSTRUCTION MATERIALS:

Private pit located in Section 22-T20S-R24E.

7. METHODS OF HANDLING WASTE DISPOSAL:

- A. Drill cuttings will be disposed of in the reserve pits.
- B. Drilling fluids will be allowed to evaporate in the reserve pits until the pits are dry.
- C. Water produced during operations will be collected in tanks until hauled to an approved disposal system, or separate disposal application will be submitted.
- D. Oil produced during operations will be stored in tanks until sold.
- E. Current laws and regulations pertaining to the disposal of human waste will be complied with.
- F. All trash, junk, and other waste materials will be contained in trash cages or bins to prevent scattering and will be removed and deposited in an approved sanitary land fill. Burial on site is not approved.

8. ANCILLARY FACILITIES:

- A. A road right-of-way NM-84498 is being amended to include the new road for this location.
- B. A flowline will be laid 25' off the road, buried, 3" steel line and approximately 3000' in length (See Topo plat) or will be laid 25' off the road going to the north buried 3" steel, approximately 1,000' feet in length.
- C. A powerline will be placed up off the road to our Conoco AGK Federal #3 location, being a 3 phase, 480 volt, raptor proof powerline right-of-way approximately 1000' in length.

9. WELLSITE LAYOUT:

- A. Exhibit C shows the relative location and dimensions of the well pad, the reserve pits, the location of the drilling equipment, rig orientation and access road approach. A cross section of a drill pad with approximate cuts, fills and pad orientation is shown on Exhibit E.
- B. The reserve pits will be plastic lined.
- C. A 400' x 400' area has been staked and flagged.

10. PLANS FOR RESTORATION

- A. After finishing drilling and/or completion operations, all equipment and other material not needed for further operations will be removed. The location will be cleaned of all trash and junk to leave the wellsite in as aesthetically pleasing a condition as possible.
- B. Unguarded pits, if any, containing fluids will be fenced until they have dried and been levelled.
- C. If the proposed well is non-productive, all rehabilitation and/or vegetation requirements of the BLM will be complied with and will be accomplished as expeditiously as possible. All pits will be filled level within 90 days after abandonment.

11. SURFACE OWNERSHIP: BLM (Carlsbad, NM)

12. OTHER INFORMATION:

- A. Topography: Refer to the existing archaeological report for a description of the topography, flora, fauna, soil characteristics, dwellings, historical and cultural sites.
- B. The primary surface use is for grazing.

13. OPERATOR'S REPRESENTATIVE

A. Through A.P.D. Approval:

Ken Beardemphl, Landman  
Yates Petroleum Corporation  
105 South Fourth Street  
Artesia, New Mexico 88210  
Phone (505) 748-1471

B. Through Drilling Operations,  
Completions and Production:

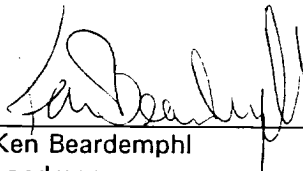
Mike Slater, Operations Manager  
Yates Petroleum Corporation  
105 South Fourth Street  
Artesia, New Mexico 88210  
Phone (505) 748-1471

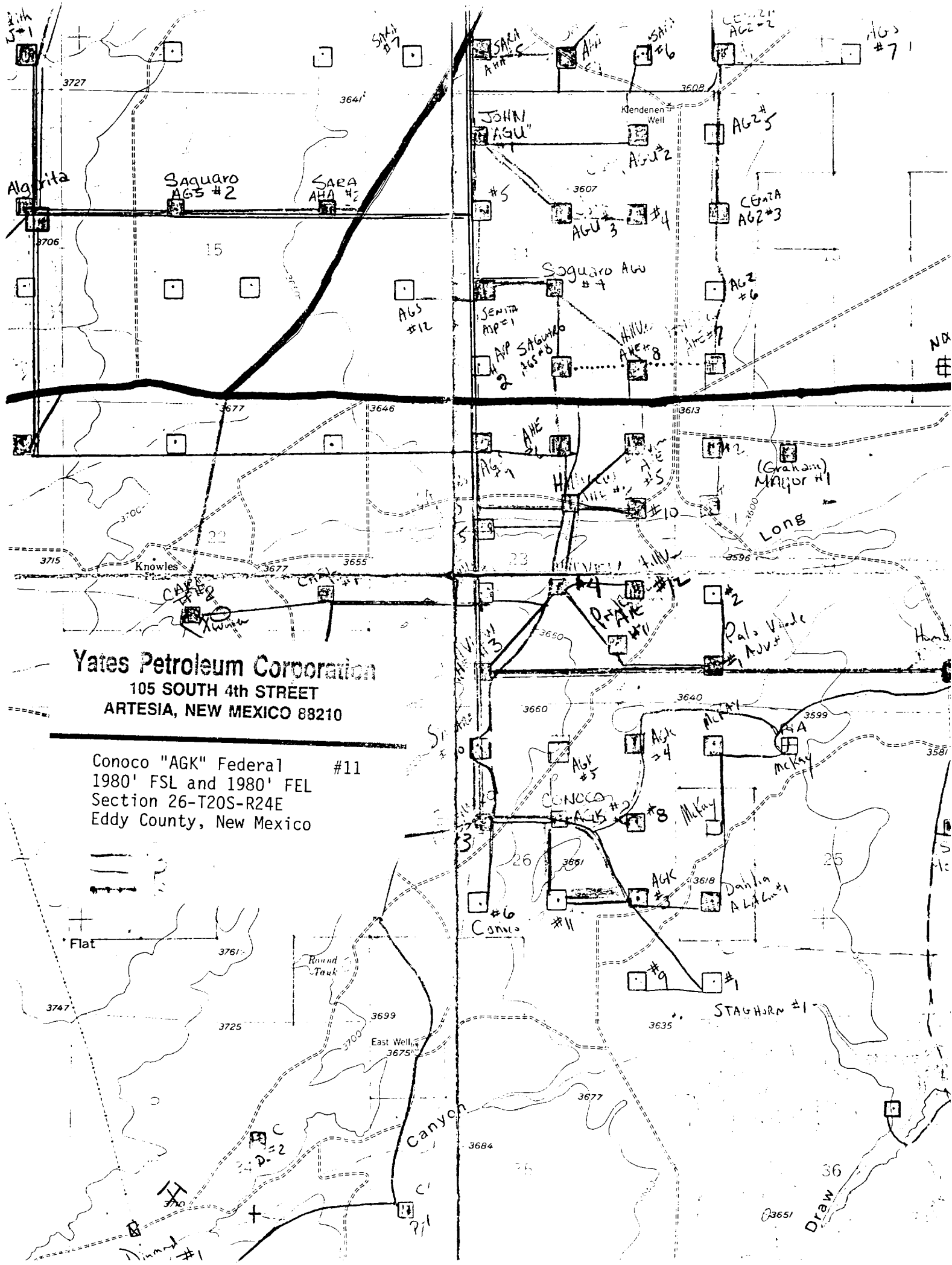
14. CERTIFICATION:

I hereby certify that I, or persons under my direct supervision, have inspected the proposed drillsite and access route, that I am familiar with the conditions which presently exist; that the statements made in this plan are to the best of my knowledge, true and correct; and , that the work associated with the operations proposed herein will be performed by Yates Petroleum Corporation and its contractors and subcontractors in conformity with this plan and the terms and conditions under which it is approved. This statement is subject to the provisions of 18 U.S.C. 1001 for the filing of a false statement.

6-1-92

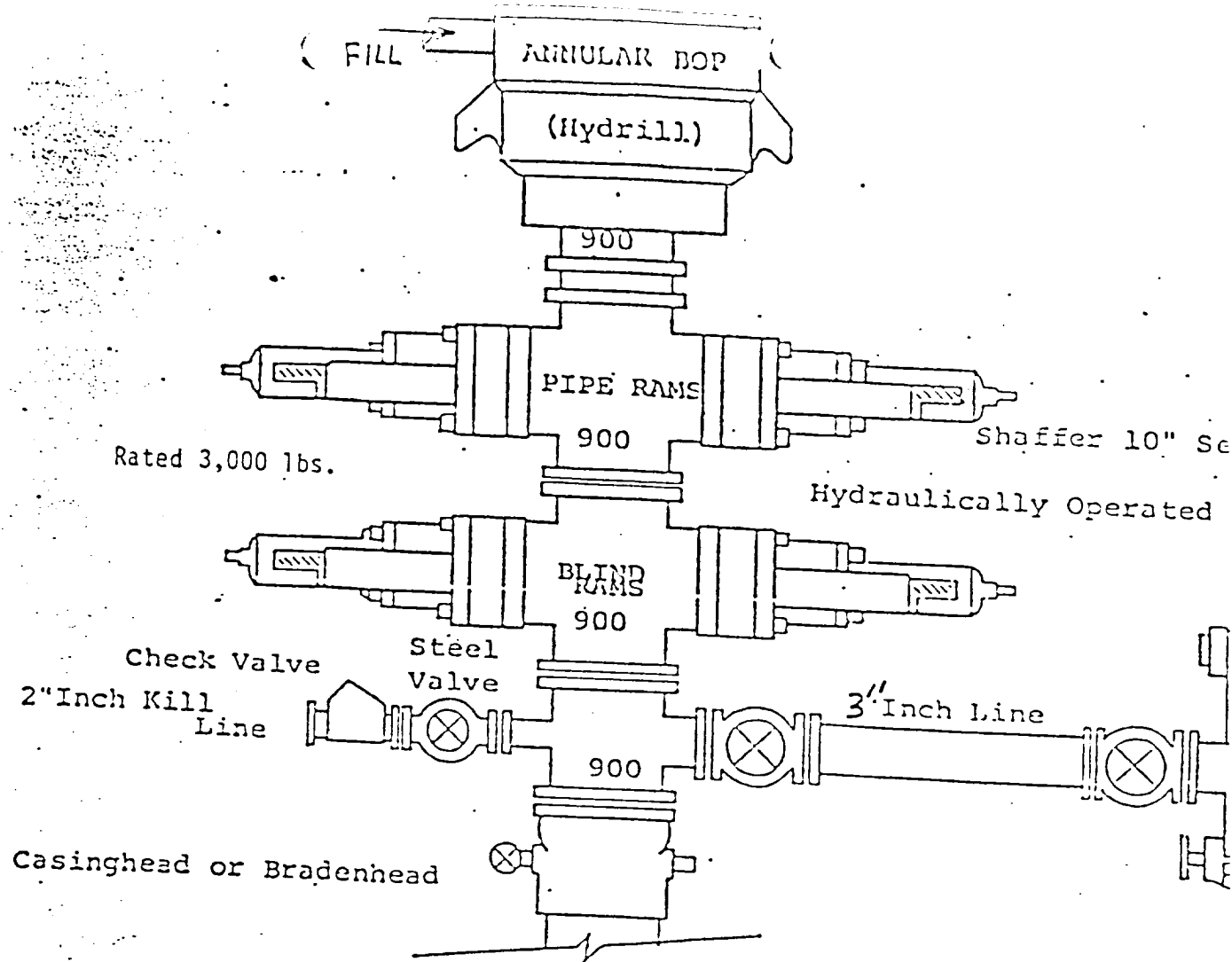
\_\_\_\_\_  
Date

  
\_\_\_\_\_  
Ken Beardemphl  
Landman



**Yates Petroleum Corporation**  
105 SOUTH 4th STREET  
ARTESIA, NEW MEXICO 88210

Conoco "AGK" Federal #11  
1980' FSL and 1980' FEL  
Section 26-T20S-R24E  
Eddy County, New Mexico



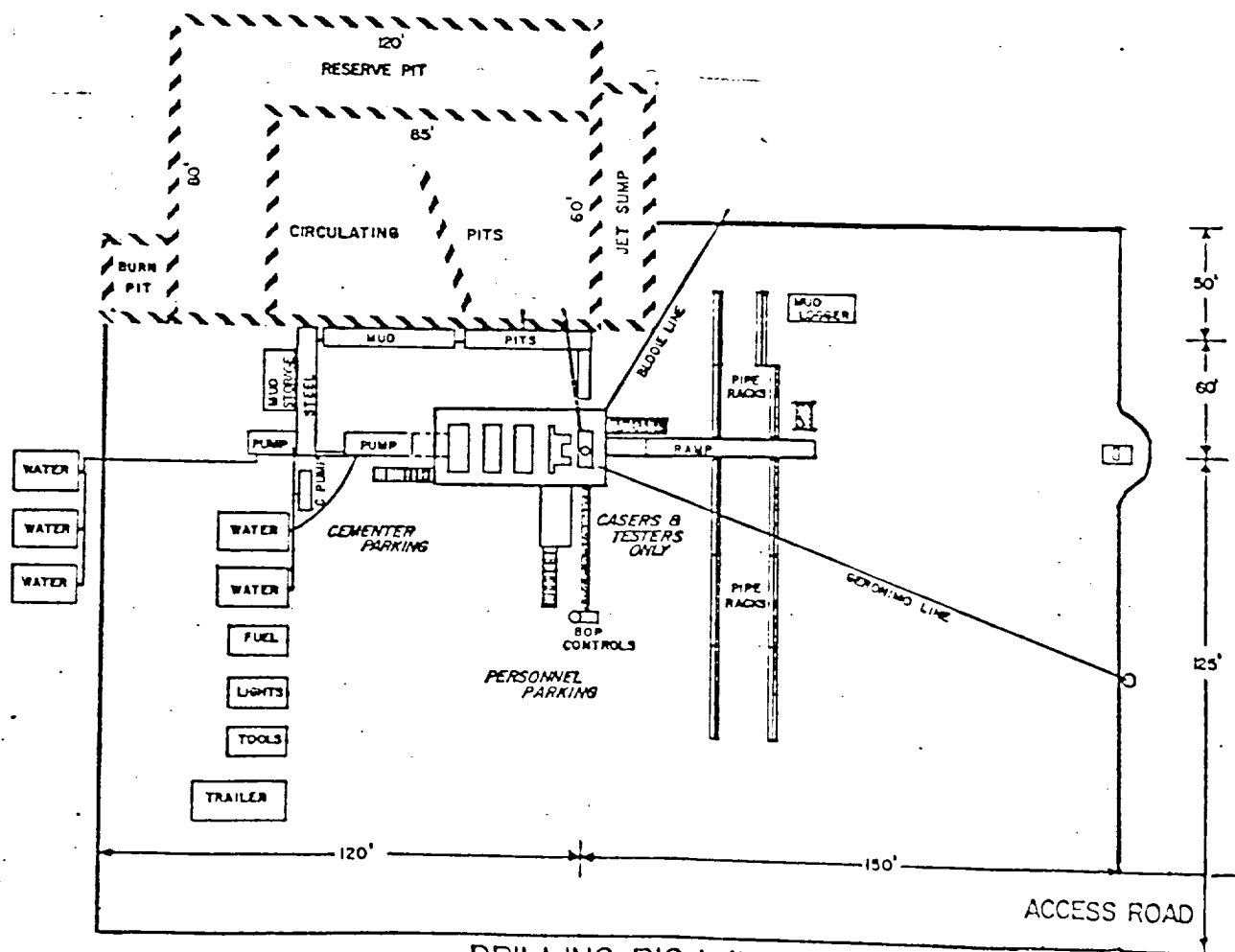
THE FOLLOWING CONSTITUTE MINIMUM BLOWOUT PREVENTER REQUIREMENTS

1. All preventers to be hydraulically operated with secondary manual installed prior to drilling out from under casing.
2. Choke outlet to be a minimum of 3" diameter.
3. Kill line to be of all steel construction of 2" minimum diameter.
4. All connections from operating manifolds to preventers to be all hole or tube a minimum of one inch in diameter.
5. The available closing pressure shall be at least 15% in excess of required with sufficient volume to operate the B.O.P.'s.
6. All connections to and from preventer to have a pressure rating to that of the B.O.P.'s.
7. Inside blowout preventer to be available on rig floor.
8. Operating controls located a safe distance from the rig floor.
9. Hole must be kept filled on trips below intermediate casing.

Exhibit B



# YATES PETROLEUM CORPORATION



DRILLING RIG LAYOUT

Scale: 1 inch = 50 feet

Exhibit C

Conoco "AGK" Federal #11  
1980' FSL and 1980' FEL  
Section 26-T20S-R24E  
Eddy County, New Mexico

DAGGER DRAW 50

NO. | INDIAN BASIN UNIT

MARATHON (OPER.)