

Submit to Appropriate
District Office
State Lease - 6 copies
Fee Lease - 5 copies

State of New Mexico
En. , Minerals and Natural Resources Department

Form C-101
Revised 1-1-89

DISTRICT I
P.O. Box 1980, Hobbs, NM 88240

DISTRICT II
P.O. Drawer DD, Artesia, NM 88210

DISTRICT III
1000 Rio Brazos Rd., Aztec, NM 87410

OIL CONSERVATION DIVISION

P.O. Box 2088
Santa Fe, New Mexico 87504-2088

AUG 18 1992

O. C. D.

API NO. (assigned by OCD on New Wells)
30-015-27187

5. Indicate Type of Lease
STATE ☐ FEE ☒

6. State Oil & Gas Lease No.

APPLICATION FOR PERMIT TO DRILL, DEEPEN, OR PLUG BACK

1a. Type of Work:
DRILL ☒ RE-ENTER ☐ DEEPEN ☐ PLUG BACK ☐

b. Type of Well:
OIL WELL ☒ GAS WELL ☐ OTHER ☐
SINGLE ZONE ☐ MULTIPLE ZONE ☐

2. Name of Operator
Yates Petroleum Corporation ✓

3. Address of Operator
105 South Fourth Street, Artesia, New Mexico

4. Well Location
Unit Letter E : 1980 Feet From The North Line and 660 Feet From The West Line
Section 14 Township 20 South Range 24 East NMPM Eddy County

7. Lease Name or Unit Agreement Name
John "AGU"

8. Well No.
7

9. Pool name or Wildcat
✓ S. Dagger Draw Upper Penn

10. Proposed Depth
8200'

11. Formation
Canyon

12. Rotary or C.T.
Rotary

13. Elevations (Show whether DF, RT, GR, etc.)
3635' GR

14. Kind & Status Plug. Bond
Blanket

15. Drilling Contractor
Not Designated

16. Approx. Date Work will start
ASAP

17. PROPOSED CASING AND CEMENT PROGRAM

SIZE OF HOLE	SIZE OF CASING	WEIGHT PER FOOT	SETTING DEPTH	SACKS OF CEMENT	EST. TOP
<u>14 3/4"</u>	<u>9 5/8"</u>	<u>36# J-55</u>	<u>1100'</u>	<u>1100 sacks</u>	<u>Circulated</u>
<u>8 3/4"</u>	<u>7"</u>	<u>23 & 26#</u>	<u>TD</u>	<u>As warranted</u>	

Yates Petroleum Corporation proposes to drill and test the Canyon and intermediate formations. Approximately 1100' of surface casing will be set and cement circulated to shut off gravel and cavings. If commercial, production casing will be run and cemented, will perforate and stimulate as needed for production.

MUD PROGRAM: FW gel/LCM to 1100'; FW to 5200'; cut Brine to TD.

BOP PROGRAM: BOP's and hydril will be installed on the 9 5/8" casing and tested daily.

APPROVAL VALID FOR 180 DAYS
PERMIT EXPIRES 2/19/93
UNLESS DRILLING UNDERWAY

IN ABOVE SPACE DESCRIBE PROPOSED PROGRAM: IF PROPOSAL IS TO DEEPEN OR PLUG BACK, GIVE DATA ON PRESENT PRODUCTIVE ZONE AND PROPOSED NEW PRODUCTIVE ZONE. GIVE BLOWOUT PREVENTER PROGRAM, IF ANY.

I hereby certify that the information above is true and complete to the best of my knowledge and belief.

SIGNATURE Ken Beardemph1 TITLE Landman DATE 8-17-92
TYPE OR PRINT NAME Ken Beardemph1 TELEPHONE NO. 748-1471

(This space for State Use)

ORIGINAL SIGNED BY
MIKE WILLIAMS

APPROVED BY SUPERVISOR, DISTRICT II TITLE _____ DATE AUG 20 1992

CONDITIONS OF APPROVAL, IF ANY:

NOTIFY N.M.O.C.D. IN SUFFICIENT
TIME TO WITNESS CEMENTING THE
9 5/8" CASING

Submit to Appropriate
District Office
State Lease - 4 copies
Fee Lease - 3 copies

State of New Mexico
Energy, Minerals and Natural Resources Department

Form C-102
Revised 1-1-89

OIL CONSERVATION DIVISION

P.O. Box 2088
Santa Fe, New Mexico 87504-2088

DISTRICT I
P.O. Box 1980, Hobbs, NM 88240

DISTRICT II
P.O. Drawer DD, Artesia, NM 88210

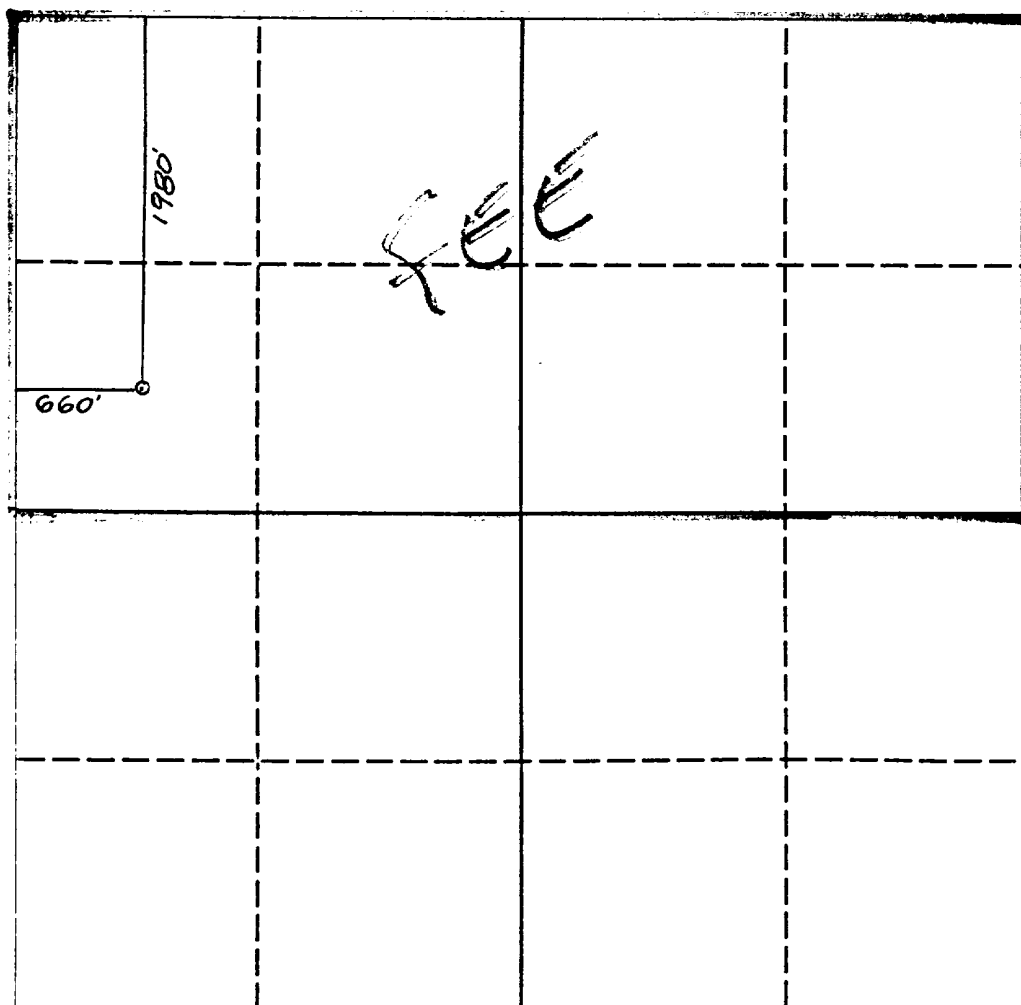
DISTRICT III
1000 Rio Brazos Rd., Aztec, NM 87410

WELL LOCATION AND ACREAGE DEDICATION PLAT

All Distances must be from the outer boundaries of the section

Operator YATES PETROLEUM CORPORATION			Lease JOHN AGU		Well No. 7
Unit Letter E	Section 14	Township 20 SOUTH	Range 24 EAST	County EDDY COUNTY, NM	
Actual Footage Location of Well: 1980 feet from the NORTH line and 660 feet from the WEST line					
Ground level Elev. 3635.	Producing Formation <i>Cisco Canyon</i>		Pool <i>S. Dayer Draw Upper Penn</i>		Dedicated Acreage: 3.20 Acres

1. Outline the acreage dedicated to the subject well by colored pencil or hatchure marks on the plat below.
2. If more than one lease is dedicated to the well, outline each and identify the ownership thereof (both as to working interest and royalty).
3. If more than one lease of different ownership is dedicated to the well, have the interest of all owners been consolidated by communitization, unitization, force-pooling, etc.?
☐ Yes ☐ No If answer is "yes" type of consolidation _____
If answer is "no" list the owners and tract descriptions which have actually been consolidated. (Use reverse side of this form if necessary).
No allowable will be assigned to the well until all interests have been consolidated (by communitization, unitization, forced-pooling, or otherwise) or until a non-standard unit, eliminating such interest, has been approved by the Division.



OPERATOR CERTIFICATION

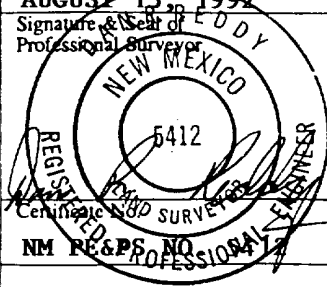
I hereby certify that the information contained herein is true and complete to the best of my knowledge and belief.

Signature *Ken Beardleph*
Printed Name **Ken Beardleph**
Position **Landman**
Company **Yates Pet. Corp.**
Date **8-17-92**

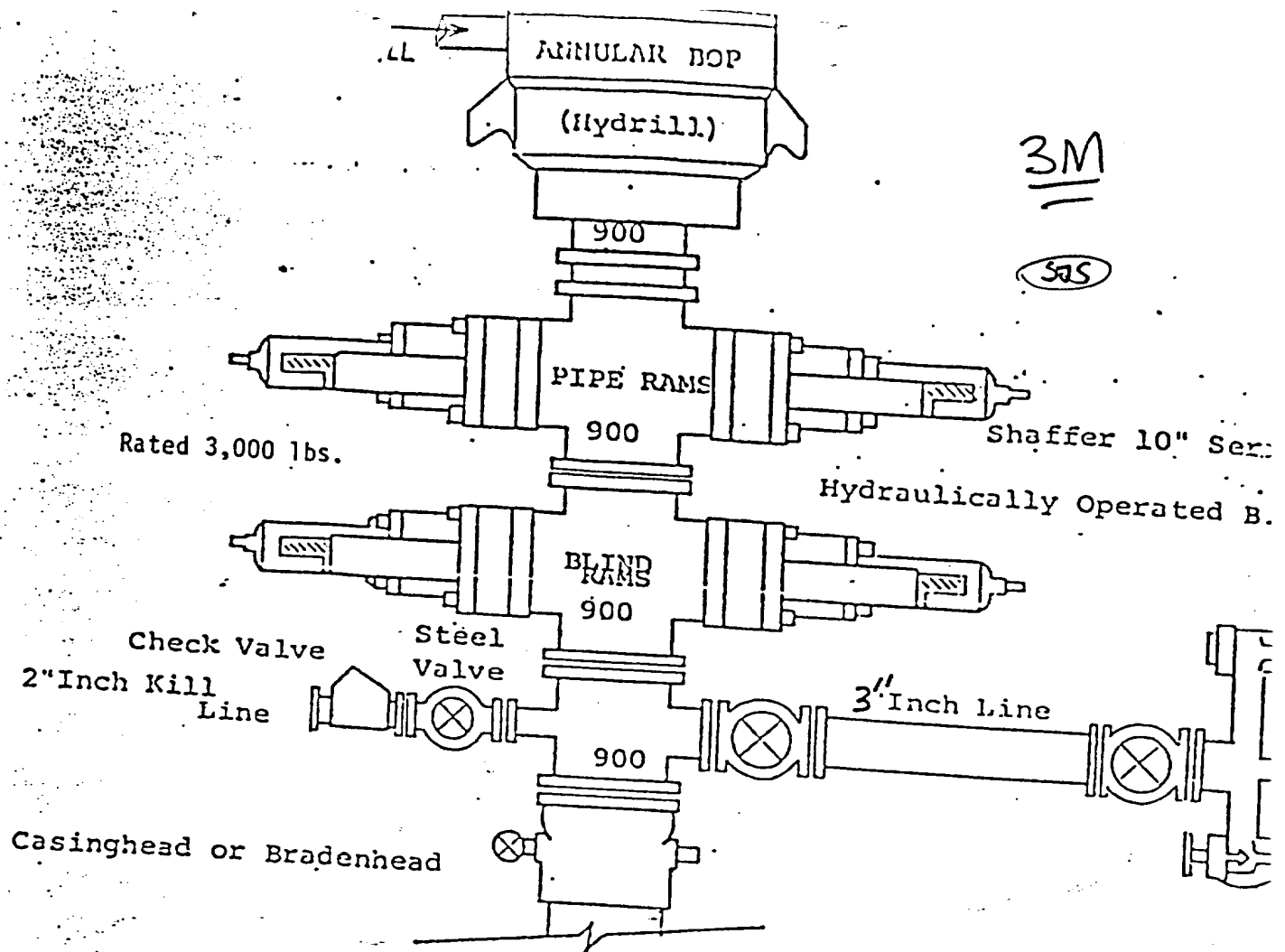
SURVEYOR CERTIFICATION

I hereby certify that the well location shown on this plat was plotted from field notes of actual surveys made by me or under my supervision, and that the same is true and correct to the best of my knowledge and belief.

Date Surveyed
AUGUST 13, 1992
Signature & Seal of
Professional Surveyor



0 330 660 990 1320 1650 1980 2310 2640 2000 1500 1000 500 0



THE FOLLOWING CONSTITUTE MINIMUM BLOWOUT PREVENTER REQUIREMENTS

1. All preventers to be hydraulically operated with secondary manual installed prior to drilling out from under casing.
2. Choke outlet to be a minimum of 3" diameter.
3. Kill line to be of all steel construction of 2" minimum diameter.
4. All connections from operating manifolds to preventers to be all steel hole or tube a minimum of one inch in diameter.
5. The available closing pressure shall be at least 15% in excess of required with sufficient volume to operate the B.O.P.'s.
6. All connections to and from preventer to have a pressure rating equal to that of the B.O.P.'s.
7. Inside blowout preventer to be available on rig floor.
8. Operating controls located a safe distance from the rig floor.
9. Hole must be kept filled on trips below intermediate casing.

EXHIBIT
B

Oxford[®]

✱ ESSELTE

MADE IN U.S.A.

NO. R753 113

• •

• •

Confidential
5-18-93

2-18-93

Dual Bat.

1070' - 8069'

Comp. Neutron

150' - 8037'

