

OIL CONSERVATION DIVISION

P.O. Box 2088
Santa Fe, New Mexico 87504-2088

DISTRICT I

P.O. Box 1980, Hobbs, NM 88240

DISTRICT II

P.O. Drawer DD, Artesia, NM 88210

DISTRICT III

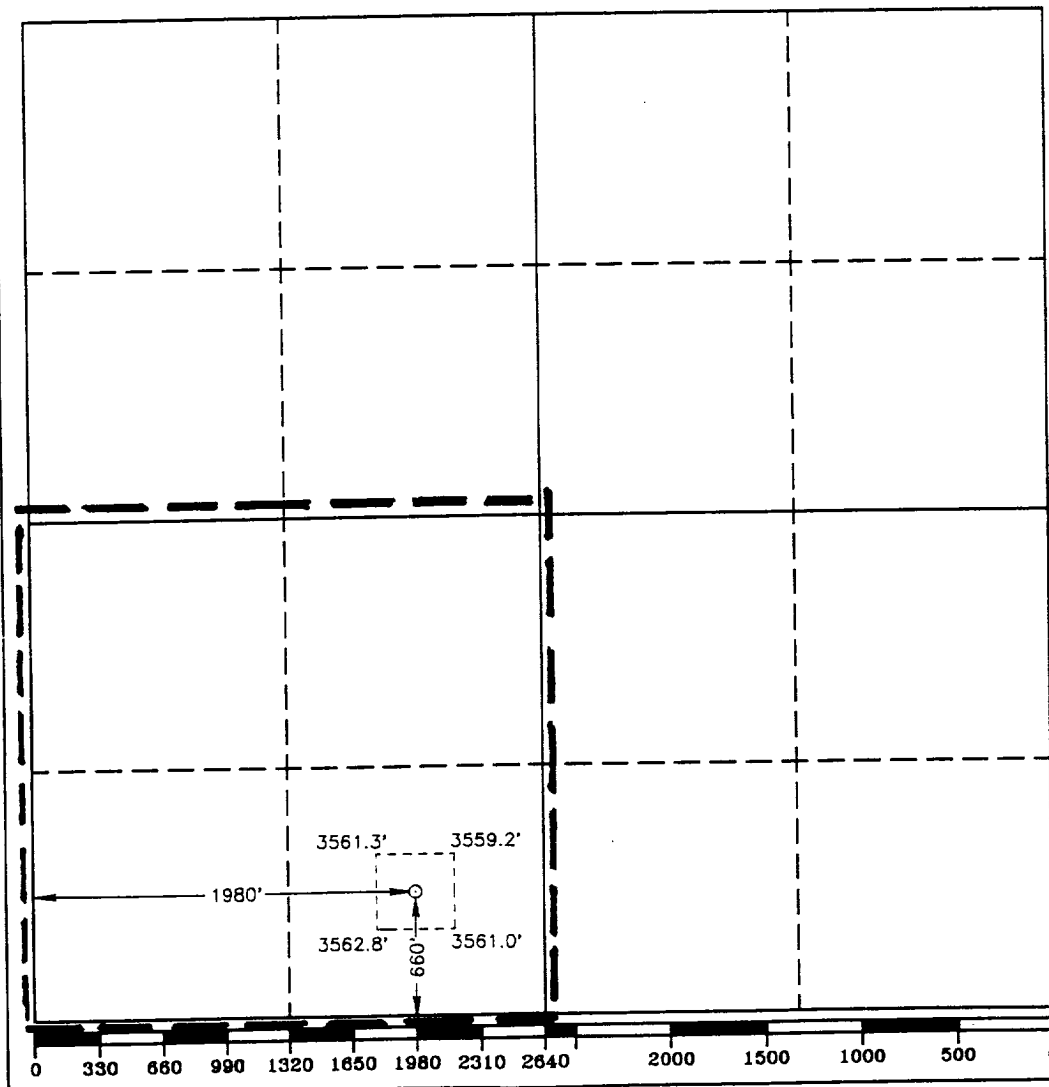
1000 Rio Brazos Rd., Aztec, NM 87410

WELL LOCATION AND ACREAGE DEDICATION PLAT

All Distances must be from the outer boundaries of the section

Operator CONOCO INC.			Lease DAGGER DRAW		Well No. 14
Unit Letter N	Section 19	Township 19 SOUTH	Range 25 EAST	NMPM	County EDDY
Actual Footage Location of Well: 660 feet from the SOUTH line and 1980 feet from the WEST line					
Ground Level Elev. 3560.7'	Producing Formation Cisco		Pool North Dagger Draw		Dedicated Acreage: 160 Acres

1. Outline the acreage dedicated to the subject well by colored pencil or hachure marks on the plat below.
 2. If more than one lease is dedicated to the well, outline each and identify the ownership thereof (both as to working interest and royalty).
 3. If more than one lease of different ownership is dedicated to the well, have the interest of all owners been consolidated by communitization, unitization, force-pooling, etc.?
☐ Yes ☐ No If answer is "yes" type of consolidation _____
- If answer is "no" list of owners and tract descriptions which have actually been consolidated. (Use reverse side of this form necessary.)
No allowable will be assigned to the well unit all interests have been consolidated (by communitization, unitization, forced-pooling, otherwise) or until a non-standard unit, eliminating such interest, has been approved by the Division.



OPERATOR CERTIFICATION

I hereby certify the the information contained herein is true and complete to the best of my knowledge and belief.

Signature
Jerry W. Hoover
Printed Name
Jerry W. Hoover
Position
Sr. Conservation Coordinator
Company
Conoco Inc.
Date
9/21/92

SURVEYOR CERTIFICATION

I hereby certify that the well location shown on this plat was plotted from field notes of actual surveys made by me or under my supervision, and that the same is true and correct to the best of my knowledge and belief.

Date Surveyed
AUGUST 28, 1992

Signature & Seal of
Professional Surveyor

REGISTERED LAND SURVEYOR
No. **3233**
Certificate No. **JOHN W. WEST, 678**
RONALD J. EIDSON, 3239
RONALD J. EIDSON, 1977
92m11269