

OIL CONSERVATION DIVISION

P.O. Box 2088

Santa Fe, New Mexico 87504-2088

DISTRICT I

P.O. Box 1960, Hobbs, NM 88240

DISTRICT II

P.O. Drawer DD, Artesia, NM 88210

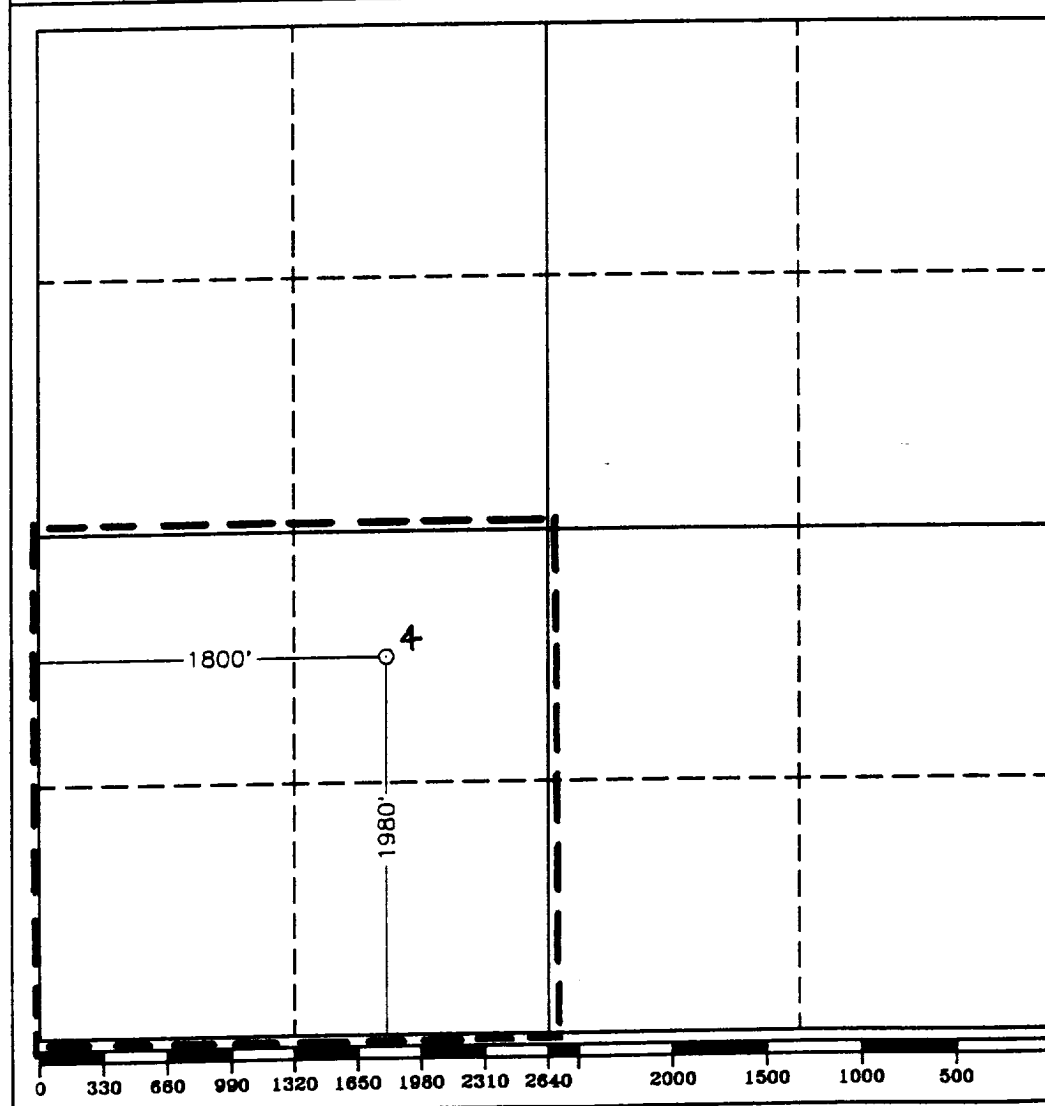
DISTRICT III

1000 Rio Brazos Ed., Artec, NM 87410

WELL LOCATION AND ACREAGE DEDICATION PLAT

All Distances must be from the outer boundaries of the section

Operator CONOCO INC.			Lease DEE STATE		Well No. 4
Unit Letter K	Section 36	Township 19 SOUTH	Range 24 EAST	NMPM	County EDDY
Actual Footage Location of Well: 1980 feet from the SOUTH line and 1800 feet from the WEST line					
Ground Level Elev. 3612.0	Producing Formation Cisco		Pool North Dagger Draw		Dedicated Acreage: 160 Acres
<p>1. Outline the acreage dedicated to the subject well by colored pencil or hatchure marks on the plat below.</p> <p>2. If more than one lease is dedicated to the well, outline each and identify the ownership thereof (both as to working interest and royalty).</p> <p>3. If more than one lease of different ownership is dedicated to the well, have the interest of all owners been consolidated by communitization, unitization, force-pooling, etc.?</p> <p><input type="checkbox"/> Yes <input type="checkbox"/> No If answer is "yes" type of consolidation _____</p> <p>If answer is "no" list of owners and tract descriptions which have actually been consolidated. (Use reverse side of this form necessary.) _____</p> <p>No allowable will be assigned to the well unit all interests have been consolidated (by communitization, unitization, forced-pooling, otherwise) or until a non-standard unit, eliminating such interest, has been approved by the Division.</p>					



OPERATOR CERTIFICATION

I hereby certify the the information contained herein is true and complete to the best of my knowledge and belief.

Signature

Jerry W. Hoover
Printed Name
Jerry W. Hoover

Position

Sr. Conservation Coordinator
Company
Conoco Inc.

Date

12/1/92

SURVEYOR CERTIFICATION

I hereby certify that the well location shown on this plat was plotted from field notes of actual surveys made by me or under my supervision, and that the same is true and correct to the best of my knowledge and belief.

Date Surveyed

OCTOBER 20, 1992

Signature & Seal of
Professional Surveyor

Gary L. Jones
GARY L. JONES
NEW MEXICO
Certification No. JOHN W. WEST. 578
RONALD J. SEDON. 3288
GARY L. JONES. 7977
92-11-1583