

Submit to Appropriate
District Office
State Lease - 6 copies
Fee Lease - 5 copies

State of New Mexico
Energy, Minerals and Natural Resources Department

Form C-101
Revised 1-1-89

clsf
Bum
5/1/89

DISTRICT I
P.O. Box 1980, Hobbs, NM 88240

DISTRICT II
P.O. Drawer DD, Artesia, NM 88210

DISTRICT III
1000 Rio Brazos Rd., Aztec, NM 87410

OIL CONSERVATION DIVISION

P.O. Box 2088
Santa Fe, New Mexico 87504-2088

JAN 27 1993

O.C.D.

API NO. (assigned by OCD on New Wells)	30-015-27298
5. Indicate Type of Lease	STATE <input checked="" type="checkbox"/> FEE <input type="checkbox"/>
6. State Oil & Gas Lease No.	648
7. Lease Name or Unit Agreement Name	East Millman
8. Well No.	197
9. Pool name or Wildcat	E. Millman Q-G-SA

10. Proposed Depth	11. Formation	12. Rotary or C.T.	
2600	Grayburg	Rot.	
13. Elevations (Show whether DF, RT, GR, etc.)	14. Kind & Status Plug. Bond	15. Drilling Contractor	16. Approx. Date Work will start
3425 GR	Blanket	Capstar	Feb. 01

PROPOSED CASING AND CEMENT PROGRAM					
SIZE OF HOLE	SIZE OF CASING	WEIGHT PER FOOT	SETTING DEPTH	SACKS OF CEMENT	EST. TOP
12-1/4"	8-5/8"	24#	350'	300	surf
7-7/8"	5-1/2"	15.50#	2600'	500	surf

Plan to drill a 12-1/4" hole to approx. 350'; set 8-5/8" surface casing. Circulate "C" cement. Drill 7-7/8" hole to TD. Run open hole logs (LDT-CNL-GR & DLL). Run 5-1/2" casing and circulate 50/50 POZ "C" cement. Perforate the Grayburg-Queen and stimulate as necessary for optimum production.

Mud Program: Fresh water mud 0'-350'
Salt water mud 350'-TD.

POST ID-1
2-5-93
NEWLOC + API

IN ABOVE SPACE DESCRIBE PROPOSED PROGRAM: IF PROPOSAL IS TO DEEPEN OR PLUG BACK, GIVE DATA ON PRESENT PRODUCTIVE ZONE AND PROPOSED NEW PRODUCTIVE ZONE. GIVE BLOWOUT PREVENTER PROGRAM, IF ANY.

I hereby certify that the information above is true and complete to the best of my knowledge and belief.

SIGNATURE Chuck Morgan TITLE Engr. DATE 1/27/93

TYPE OR PRINT NAME _____ TELEPHONE NO. 748-9814

(This space for State Use)

APPROVED BY Mark Riley TITLE Geologist DATE 2-1-93

CONDITIONS OF APPROVAL, IF ANY:

* PENDING NSC APPROVAL

APPROVAL VALID FOR 180 DAYS
PERMIT EXPIRES 3-1-93
UNLESS DRILLING UNDERWAY

Submit to Appropriate
District Office
State Lease - 4 copies
Fee Lease - 3 copies

State of New Mexico
Energy, Minerals and Natural Resources Department

Form C-102
Revised 1-1-89

OIL CONSERVATION DIVISION

P.O. Box 2088

Santa Fe, New Mexico 87504-2088

DISTRICT I

P.O. Box 1980, Hobbs, NM 88240

DISTRICT II

P.O. Drawer DD, Artesia, NM 88210

DISTRICT III

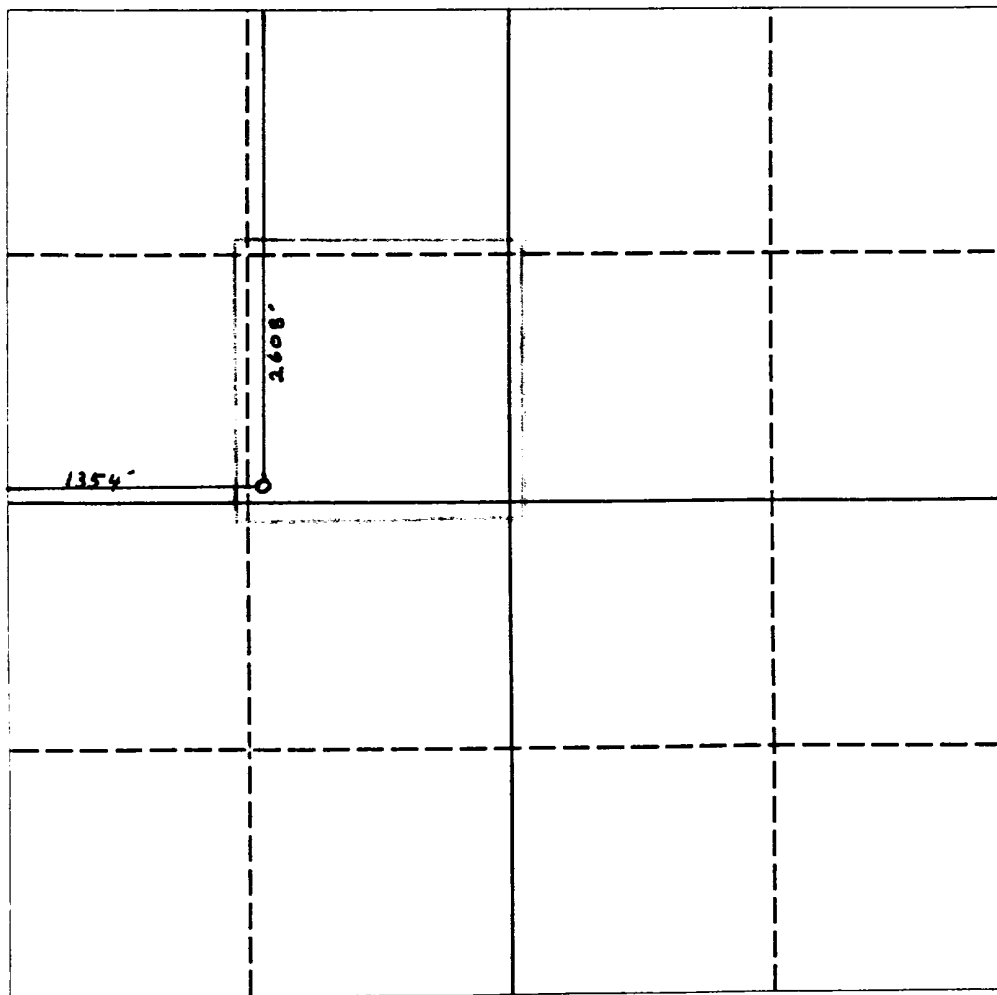
1000 Rio Brazos Rd., Aztec, NM 87410

WELL LOCATION AND ACREAGE DEDICATION PLAT

All Distances must be from the outer boundaries of the section

Operator SDX RESOURCES, INC.			Lease EAST MILLMAN UNIT		Well No. 197
Unit Letter F	Section 14	Township 19 SOUTH	Range 28 EAST	County EDDY COUNTY, NM	
Actual Footage Location of Well:					
1354 feet from the		WEST	line and	2608	feet from the NORTH line
Ground level Elev. 3425	Producing Formation QUNN GRBG SAN ANDRES		Pool EAST MILLMAN QUEEN GRBG SAN ANDRES		Dedicated Acreage: 40 Acres

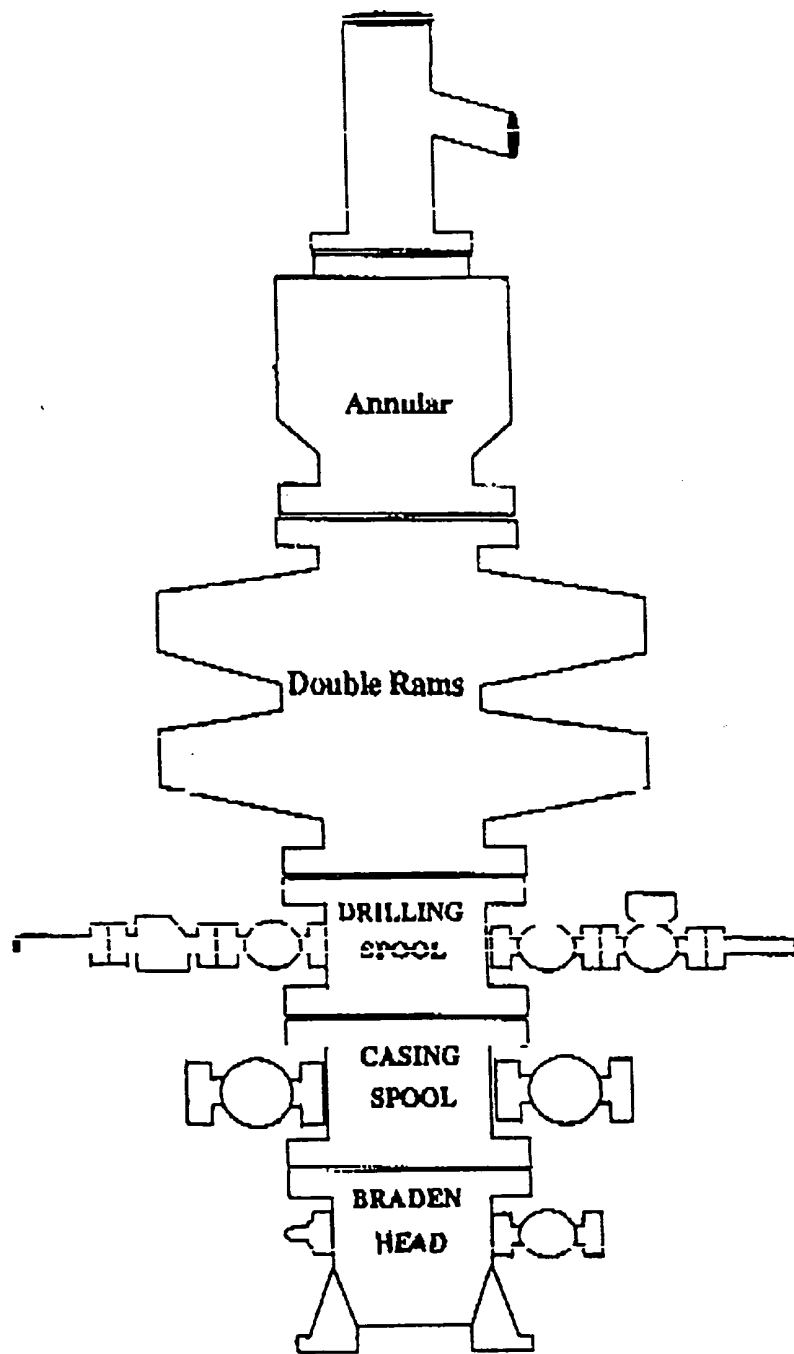
1. Outline the acreage dedicated to the subject well by colored pencil or hatchure marks on the plat below.
2. If more than one lease is dedicated to the well, outline each and identify the ownership thereof (both as to working interest and royalty).
3. If more than one lease of different ownership is dedicated to the well, have the interest of all owners been consolidated by communitization, unitization, force-pooling, etc.?
☐ Yes ☐ No If answer is "yes" type of consolidation _____
If answer is "no" list the owners and tract descriptions which have actually been consolidated. (Use reverse side of this form if necessary).
No allowable will be assigned to the well until all interests have been consolidated (by communitization, unitization, forced-pooling, or otherwise) or until a non-standard unit, eliminating such interest, has been approved by the Division.



OPERATOR CERTIFICATION
I hereby certify that the information contained herein is true and complete to the best of my knowledge and belief.
Chuck Morgan
Signature
Chuck Morgan
Printed Name
Engr.
Position
SDX Resources, Inc.
Company
1/27/93
Date

SURVEYOR CERTIFICATION
I hereby certify that the well location shown on this plat was plotted from field notes of actual surveys made by me or under my supervision, and that the same is true and correct to the best of my knowledge and belief.
Date Surveyed
JANUARY 27 1993
Signature & Seal of Professional Surveyor
[Signature]
Professional Engineer
5412
REGISTERED PROFESSIONAL ENGINEER
NEW MEXICO
Certification No.
NM PE&S 5412

0 330 660 990 1320 1650 1980 2310 2640 2000 1500 1000 500 0



Oxford[®]

⊗ ESSELTE

MADE IN U.S.A.

NO. R753 1/3

• •

• •

3-4-92

Dual Lat.

1000'-2643'

Comp. Neutron

200'-2646'

NSL-3219

Appw. 2/3/93

