

Submit to Appropriate  
District Office  
State Lease - 6 copies  
Fee Lease - 5 copies

State of New Mexico  
Energy, Minerals and Natural Resources Department

Form C-101  
Revised 1-1-89

OIL CONSERVATION DIVISION

P.O. Box 2088  
Santa Fe, New Mexico 87504-2088

DISTRICT I  
P.O. Box 1980, Hobbs, NM 88240

DISTRICT II  
P.O. Drawer DD, Artesia, NM 88210

DISTRICT III  
1000 Rio Brazos Rd., Aztec, NM 87410

FEB 0 1993

O.C.D.

API NO. (assigned by OCD on New Wells)

30-015-27300

5. Indicate Type of Lease

STATE ☒

FEE ☐

6. State Oil & Gas Lease No.

648

APPLICATION FOR PERMIT TO DRILL, DEEPEN, OR PLUG BACK

1a. Type of Work:

DRILL ☒

RE-ENTER ☐

DEEPEN ☐

PLUG BACK ☐

b. Type of Well:

OIL  
WELL ☒

GAS  
WELL ☐

OTHER ☐

SINGLE  
ZONE ☐

MULTIPLE  
ZONE ☒

7. Lease Name or Unit Agreement Name

East Millman

2. Name of Operator

SDX RESOURCES, INC.

8. Well No.

194

3. Address of Operator

P.O. BOX 5061 Midland, TX. 79704-5061

9. Pool name or Wildcat

E. Millman Q-G-SA

4. Well Location

Unit Letter K : 1330 Feet From The West Line and 382 Feet From The South Line

Section 14

Township 19-S

Range 28-E

NMPM Eddy

County

10. Proposed Depth  
2600

11. Formation  
Grayburg

12. Rotary or C.T.  
Rot

13. Elevations (Show whether DF, RT, GR, etc.)  
3426 GR

14. Kind & Status Plug. Bond  
Blanket

15. Drilling Contractor  
Capstar

16. Approx. Date Work will start  
Feb. 01

17. PROPOSED CASING AND CEMENT PROGRAM

SIZE OF HOLE	SIZE OF CASING	WEIGHT PER FOOT	SETTING DEPTH	SACKS OF CEMENT	EST. TOP
12-1/4"	8-5/8"	24#	350' +	300	surf
7-7/8"	5-1/2"	15.50#	2600'	500	surf

Plan to drill a 12-1/4" hole to approx. 350'; set 8-5/8" surface casing. Circulate "C" cement. Drill 7-7/8" hole to TD. Run open hole logs (LDT-CNL-GR & DLL). Run 5-1/2" casing and circulate 50/50 POZ "C" cement. Perforate the Grayburg-Queen and stimulate as necessary for optimum production.

POST 10-1  
2-5-93  
NEW LOG & API

Mud Program: Fresh water mud 0'-350'  
Salt water mud 350'-TD.

APPROVAL VALID FOR 180 DAYS  
PERMIT EXPIRES 3-3-93  
UNLESS DRILLING UNDERWAY

IN ABOVE SPACE DESCRIBE PROPOSED PROGRAM: IF PROPOSAL IS TO DEEPEN OR PLUG BACK, GIVE DATA ON PRESENT PRODUCTIVE ZONE AND PROPOSED NEW PRODUCTIVE ZONE. GIVE BLOWOUT PREVENTER PROGRAM, IF ANY.

I hereby certify that the information above is true and complete to the best of my knowledge and belief.

SIGNATURE Chuck Morgan

TITLE Engr.

DATE 1/29/93

TYPE OR PRINT NAME Chuck Morgan

TELEPHONE NO. 748-9514

(This space for State Use)

APPROVED BY Mark Kelly

TITLE Geologist

DATE 2-3-93

CONDITIONS OF APPROVAL, IF ANY:

Submit to Appropriate  
District Office  
State Lease - 4 copies  
Fee Lease - 3 copies

State of New Mexico  
Energy, Minerals and Natural Resources Department

Form C-102  
Revised 1-1-89

**OIL CONSERVATION DIVISION**

P.O. Box 2088  
Santa Fe, New Mexico 87504-2088

**DISTRICT I**  
P.O. Box 1980, Hobbs, NM 88240

**DISTRICT II**  
P.O. Drawer DD, Artesia, NM 88210

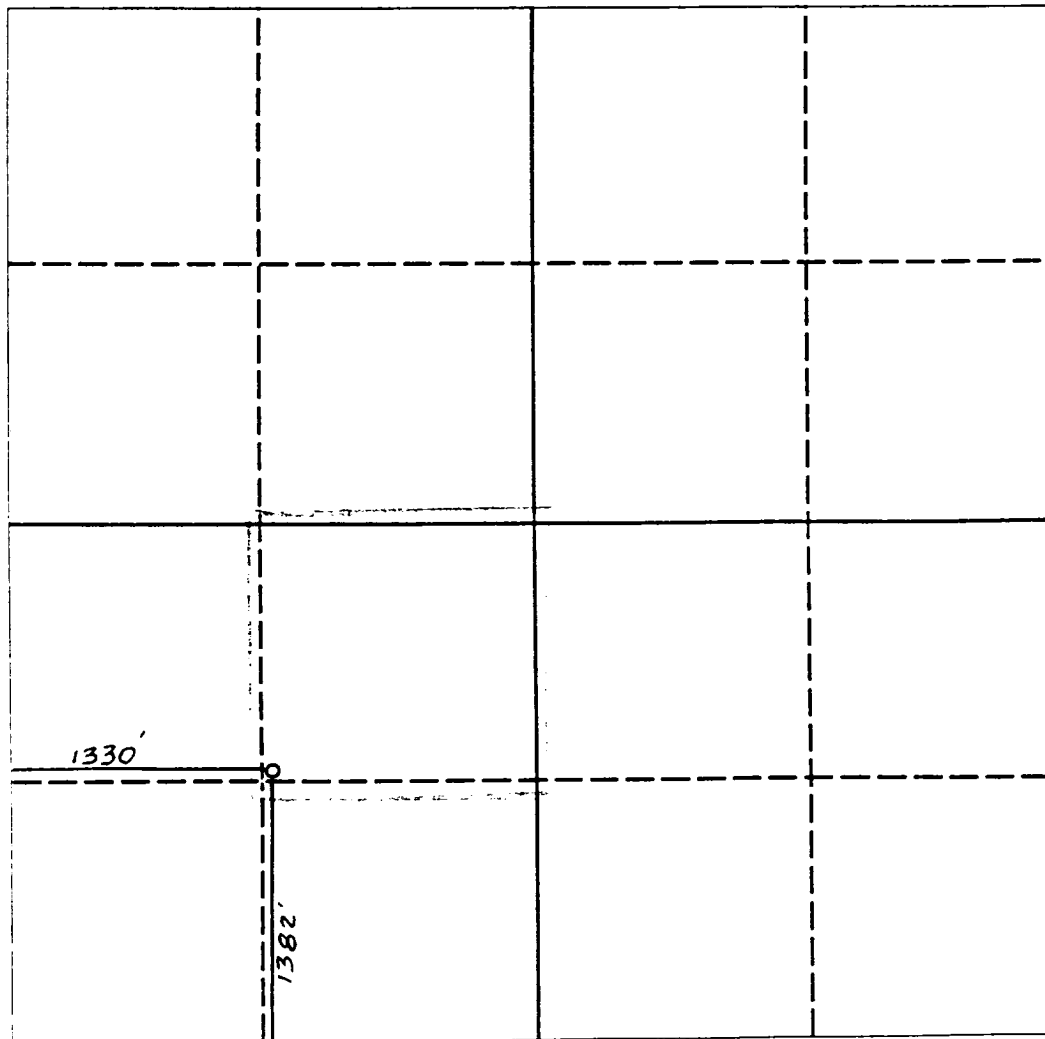
**DISTRICT III**  
1000 Rio Brazos Rd., Aztec, NM 87410

**WELL LOCATION AND ACREAGE DEDICATION PLAT**

All Distances must be from the outer boundaries of the section

Operator <b>SDX RESOURCES, INC.</b>			Lease <b>EAST MILLMAN UNIT</b>		Well No. <b>194</b>
Unit Letter <b>K</b>	Section <b>14</b>	Township <b>19 SOUTH</b>	Range <b>28 EAST</b>	County <b>EDDY COUNTY, NM</b>	
Actual Footage Location of Well: <b>1382</b> feet from the <b>SOUTH</b> line and <b>1330</b> feet from the <b>WEST</b> line					
Ground level Elev. <b>3426.</b>	Producing Formation <b>Q. - Gb</b>	Pool <b>East Millman Q. - Gb - SA</b>		Dedicated Acreage: <b>40</b> Acres	

1. Outline the acreage dedicated to the subject well by colored pencil or hatchure marks on the plat below.
2. If more than one lease is dedicated to the well, outline each and identify the ownership thereof (both as to working interest and royalty).
3. If more than one lease of different ownership is dedicated to the well, have the interest of all owners been consolidated by communitization, unitization, force-pooling, etc.?  
☐ Yes ☐ No If answer is "yes" type of consolidation \_\_\_\_\_  
If answer is "no" list the owners and tract descriptions which have actually been consolidated. (Use reverse side of this form if necessary). \_\_\_\_\_  
No allowable will be assigned to the well until all interests have been consolidated (by communitization, unitization, forced-pooling, or otherwise) or until a non-standard unit, eliminating such interest, has been approved by the Division.



**OPERATOR CERTIFICATION**

I hereby certify that the information contained herein is true and complete to the best of my knowledge and belief.

Signature *Chuck Morgan*  
Printed Name **Chuck Morgan**  
Position **Engr.**  
Company **SDX Resources, Inc**  
Date **1/29/93**

**SURVEYOR CERTIFICATION**

I hereby certify that the well location shown on this plat was plotted from field notes of actual surveys made by me or under my supervision, and that the same is true and correct to the best of my knowledge and belief.

Date Surveyed

**JANUARY 27th 1993**

Signature & Seal of  
Professional Surveyor

