

Submit to Appropriate  
District Office  
State Lease - 6 copies  
Fee Lease - 5 copies

State of New Mexico  
Energy, Minerals and Natural Resources Department

Form C-101  
Revised 1-1-89

clerk  
BND  
5/8/93

DISTRICT I  
P.O. Box 1980, Hobbs, NM 88240

DISTRICT II  
P.O. Drawer DD, Artesia, NM 88210

DISTRICT III  
1000 Rio Brazos Rd., Aztec, NM 87410

OIL CONSERVATION DIVISION

P.O. Box 2088  
Santa Fe, New Mexico 87504-2088

JAN 25 1993

O.C.D.

API NO. (assigned by OCD on New Wells)

70-015-27307

5. Indicate Type of Lease

STATE ☒

FEE ☐

6. State Oil & Gas Lease No.

E-1051

7. Lease Name or Unit Agreement Name

State BN

8. Well No.

5

9. Pool name or Wildcat

East Millman Q-G-5A

1a. Type of Work:

DRILL ☒

RE-ENTER ☐

DEEPEN ☐

PLUG BACK ☐

b. Type of Well:

OIL  
WELL ☒

GAS  
WELL ☐

OTHER ☐

SINGLE  
ZONE ☐

MULTIPLE  
ZONE ☒

2. Name of Operator

SDX Resources, Inc.

3. Address of Operator

P.O. Box 5061 Midland, Tx 79704-5061

4. Well Location

Unit Letter 0 : 1330 Feet From The East Line and 1265 Feet From The South Line

Section 11

Township 19S

Range 28E

NMPM

Eddy

County

10. Proposed Depth

2650

11. Formation

Grayburg

12. Rotary or C.T.

Rotary

13. Elevations (Show whether DF, RT, GR, etc.)

3420 GL

14. Kind & Status Plug. Bond

Blanket

15. Drilling Contractor

Capstar

16. Approx. Date Work will start

2/1/93

17.

PROPOSED CASING AND CEMENT PROGRAM

SIZE OF HOLE

SIZE OF CASING

WEIGHT PER FOOT

SETTING DEPTH

SACKS OF CEMENT

EST. TOP

12 1/4"

8 5/8"

24 #

350'

250

surface

7 7/8"

5 1/2"

15.5 #

2650'

500

surface

Plan to drill a 12 1/4" hole to  $\approx$  350' and set 8 5/8" 24# casing. Circulate "c" cement. Drill out with 7 7/8" bit to 2650'. Run open hole logs (LDT-CNL, DLL-GR). Run 5 1/2" 15.5# casing and circulate 50/50 Poz "c" cement. Perforate Grayburg - Queen and stimulate as necessary for optimum production.

Mud Program : Fresh water mud 0-350'  
Salt water mud 350'-T.O.

POST IG-1

2-5-93

NEWLOG API

APPROVAL VALID FOR 180 DAYS

PERMIT EXPIRES 8-3-93

UNLESS DRILLING UNDERWAY

IN ABOVE SPACE DESCRIBE PROPOSED PROGRAM: IF PROPOSAL IS TO DEEPEN OR PLUG BACK, GIVE DATA ON PRESENT PRODUCTIVE ZONE AND PROPOSED NEW PRODUCTIVE ZONE. GIVE BLOWOUT PREVENTER PROGRAM, IF ANY.

I hereby certify that the information above is true and complete to the best of my knowledge and belief.

SIGNATURE

Chuck Morgan

TITLE

P.E.

DATE

1/25/93

TYPE OR PRINT NAME

TELEPHONE NO.

(This space for State Use)

APPROVED BY

Mark Kelly

TITLE

Geologist

DATE

2-3-93

CONDITIONS OF APPROVAL, IF ANY:

\* NSL # 3219

Submit to Appropriate  
District Office  
State Lease - 4 copies  
Fee Lease - 3 copies

State of New Mexico  
Energy, Minerals and Natural Resources Department

Form C-102  
Revised 1-1-89

OIL CONSERVATION DIVISION

P.O. Box 2088  
Santa Fe, New Mexico 87504-2088

DISTRICT I  
P.O. Box 1980, Hobbs, NM 88240

DISTRICT II  
P.O. Drawer DD, Artesia, NM 88210

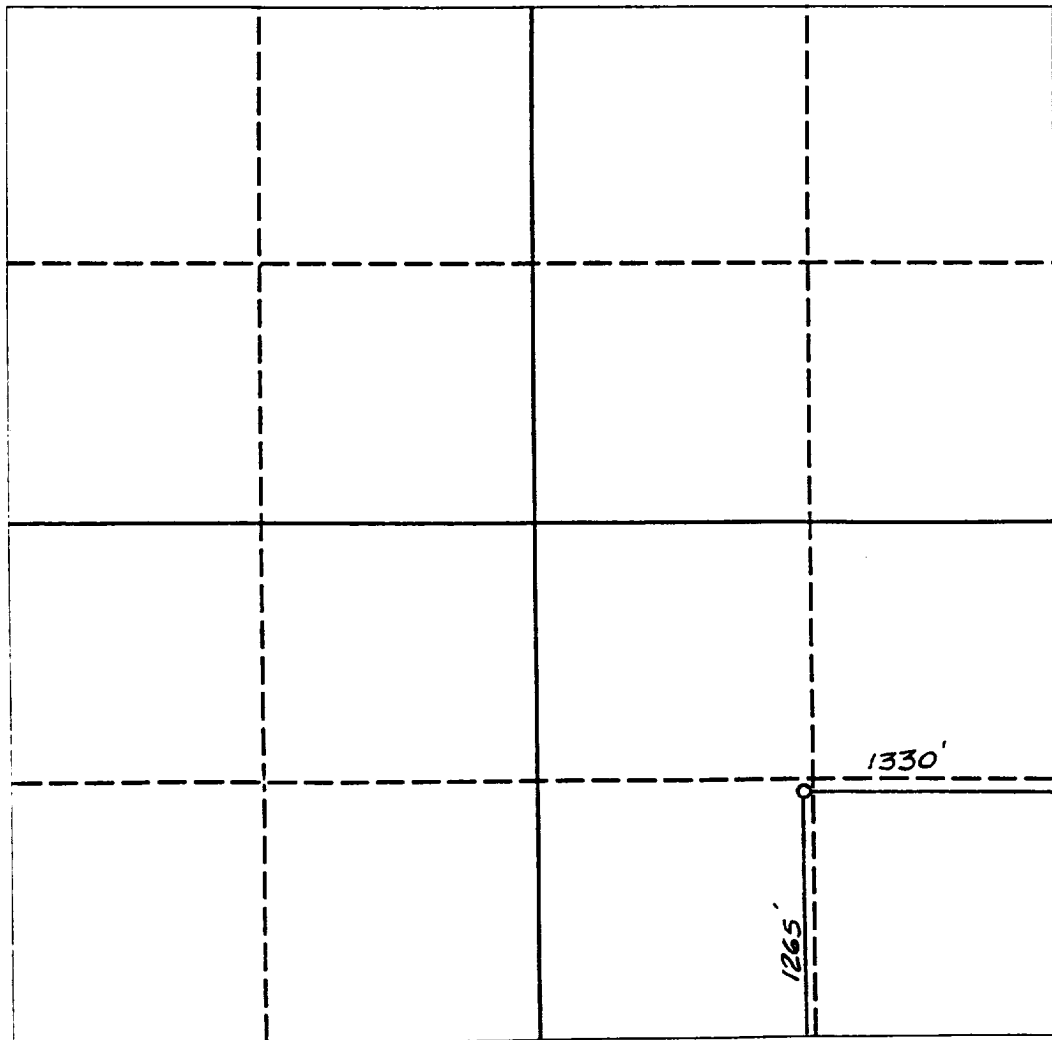
DISTRICT III  
1000 Rio Brazos Rd., Aztec, NM 87410

WELL LOCATION AND ACREAGE DEDICATION PLAT

All Distances must be from the outer boundaries of the section

Operator <b>SDX RESOURCES, INC.</b>			Lease <b>STATE BN</b>		Well No. <b>5</b>
Unit Letter <b>0</b>	Section <b>11</b>	Township <b>19 SOUTH</b>	Range <b>28 EAST</b>	County <b>EDDY COUNTY, NM</b>	
Actual Footage Location of Well: <b>1330</b> feet from the <b>EAST</b> line and <b>1265</b> feet from the <b>SOUTH</b> line					
Ground level Elev. <b>3420.</b>	Producing Formation <b>Qn - Gb.</b>	Pool <b>East Millman Q-G-5A</b>	Dedicated Acreage: <b>40</b> Acres		

1. Outline the acreage dedicated to the subject well by colored pencil or hachure marks on the plat below.
2. If more than one lease is dedicated to the well, outline each and identify the ownership thereof (both as to working interest and royalty).
3. If more than one lease of different ownership is dedicated to the well, have the interest of all owners been consolidated by communitization, unitization, force-pooling, etc.?  
☐ Yes ☐ No If answer is "yes" type of consolidation \_\_\_\_\_  
If answer is "no" list the owners and tract descriptions which have actually been consolidated. (Use reverse side of this form if necessary). \_\_\_\_\_  
No allowable will be assigned to the well until all interests have been consolidated (by communitization, unitization, forced-pooling, or otherwise) or until a non-standard unit, eliminating such interest, has been approved by the Division.



OPERATOR CERTIFICATION

I hereby certify that the information contained herein in true and complete to the best of my knowledge and belief.

Signature *Chuck Morgan*  
Printed Name **Chuck Morgan**  
Position **Engineer**  
Company **SDX, Resources, Inc.**  
Date **1/25/93**

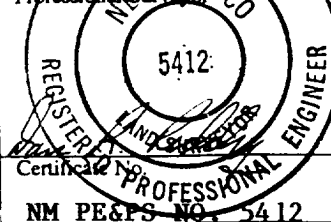
SURVEYOR CERTIFICATION

I hereby certify that the well location shown on this plat was plotted from field notes of actual surveys made by me or under my supervision, and that the same is true and correct to the best of my knowledge and belief.

Date Surveyed

**JANUARY 23, 1993**

Signature & Seal of  
Professional Surveyor



0 330 660 990 1320 1650 1980 2310 2640 2000 1500 1000 500 0

