

District I
PO Box 1980, Hobbs, NM 88241-1980
District II
PO Drawer DD, Artesia, NM 88211-0719
District III
1000 Rio Brazos Rd., Aztec, NM 87410
District IV
PO Box 2088, Santa Fe, NM 87504-2088

State of New Mexico
Energy, Minerals & Natural Resources Department

OIL CONSERVATION DIVISION
PO Box 2088
Santa Fe, NM 87504-2088

Form C-101
Revised February 21, 1994
Instructions on back
Submit to Appropriate District Office
State Lease - 6 Copies
Fee Lease - 5 Copies

☐ AMENDED REPORT

APPLICATION FOR PERMIT TO DRILL, RE-ENTER, DEEPEN, PLUGBACK, OR ADD A ZONE

Operator Name and Address. SDX Resources, Inc. P. O. Box 5061 Midland, TX. 79704		OGRID Number 020451
		API Number 30 - 015 27309
Property Code 009845	Property Name State BN	Well No. 6

Surface Location

UL or lot no.	Section	Township	Range	Lot Idn	Feet from the	North/South line	Feet from the	East/West line	County
0	11	19S	28E		2513	East	1310	South	Eddy

Proposed Bottom Hole Location If Different From Surface

UL or lot no.	Section	Township	Range	Lot Idn	Feet from the	North/South line	Feet from the	East/West line	County

Proposed Pool 1 Millman-Seven Rivers, East	Proposed Pool 2
---	-----------------

Work Type Code P	Well Type Code 0	Cable/Rotary	Lease Type Code S	Ground Level Elevation 3433
Multiple No	Proposed Depth PBDT TD 2350', 1705'	Formation Seven Rivers	Contractor Real Well Ser.	Spud Date 2/13/93

Proposed Casing and Cement Program *

Hole Size	Casing Size	Casing weight/foot	Setting Depth	Sacks of Cement	Estimated TOC
* 12-1/4	8-5/8"	24	436'	475 C1 C	Surf.
* 7-7/8"	5-1/2"	14	2348'	1200 Prem.	Surf.
* 2-7/8" Tbg.			1645'		

Describe the proposed program. If this application is to DEEPEN or PLUG BACK give the data on the present productive zone and proposed new productive zone. Describe the blowout prevention program, if any. Use additional sheets if necessary. * Represents well completion 5/7/93
Well was spudded 2/15/93 and completed 5/07/93 in the East Millman-QN-GR-SA.
Producing interval 1800'-1812' (Queen). Perforations 1800-1812 (total 13 shots, 1 spf) acidized with 2000 gals 15% NEFE and frac with 35000 gals Borate gel w/66000# 12/20 sand. Well presently producing 2 BOPD.

Plans are to set CIBP at approximately 1705'. Perforate Seven River zone (1062'-1164'). Breakdown perforations and acidize. After swab testing, well will be fraced. Flow back with modified forced closure technique, pump back load, & put on production test.

I hereby certify that the information given above is true and complete to the best of my knowledge and belief.

Signature:

Printed name:

Janice Courtney

Title:

Regulatory Tech

Date:

7/19/95

Phone:

915/685-1761

OIL CONSERVATION DIVISION

Approved by:

ORIGINAL SIGNED BY TIM W. GUM

Title:

DISTRICT II SUPERVISOR

Approval Date:

JUL 24 1995

Expiration Date:

Conditions of Approval:

Attached ☐

Submit to Appropriate
District Office
State Lease - 4 copies
Fee Lease - 3 copies

State of New Mexico
Energy, Minerals and Natural Resources Department

Form C-102
Revised 1-1-89

OIL CONSERVATION DIVISION

P.O. Box 2088

Santa Fe, New Mexico 87504-2088

DISTRICT I
P.O. Box 1980, Hobbs, NM 88240

DISTRICT II
P.O. Drawer DD, Artesia, NM 88210

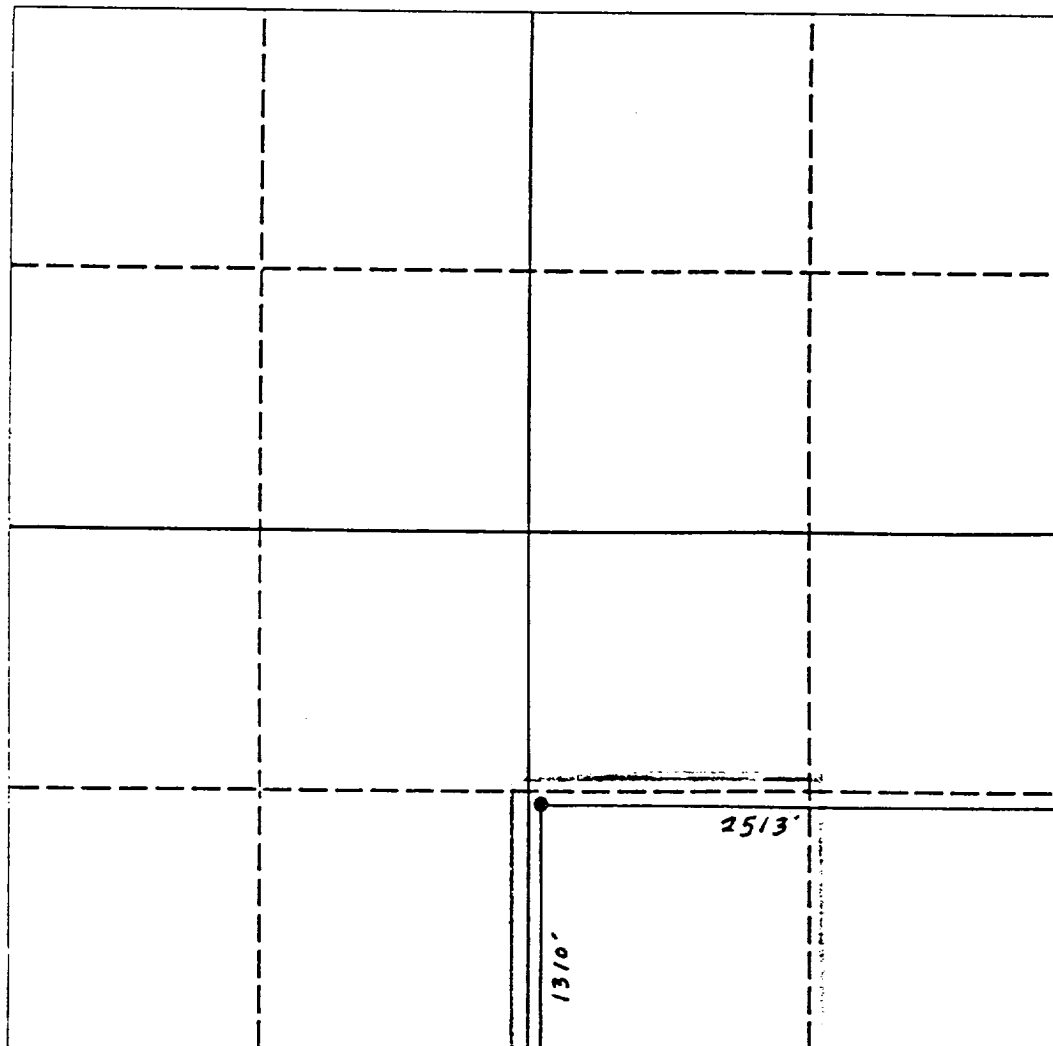
DISTRICT III
1000 Rio Brazos Rd., Aztec, NM 87410

WELL LOCATION AND ACREAGE DEDICATION PLAT

All Distances must be from the outer boundaries of the section

Operator SDX RESOURCES, INC.			Lease STATE BN		Well No. 6
Unit Letter 0	Section 11	Township 19 SOUTH	Range 28 EAST	County EDDY COUNTY, NM	
Actual Footage Location of Well: 1310 feet from the South line and 2513 feet from the East line					
Ground level Elev. 3433	Producing Formation Seven Rivers		Pool Millman-Seven Rivers, East	Dedicated Acreage: 40 Acres	

1. Outline the acreage dedicated to the subject well by colored pencil or hachure marks on the plat below.
2. If more than one lease is dedicated to the well, outline each and identify the ownership thereof (both as to working interest and royalty).
3. If more than one lease of different ownership is dedicated to the well, have the interest of all owners been consolidated by communitization, unitization, force-pooling, etc.?
☐ Yes ☐ No If answer is "yes" type of consolidation _____
If answer is "no" list the owners and tract descriptions which have actually been consolidated. (Use reverse side of this form if necessary). _____
No allowable will be assigned to the well until all interests have been consolidated (by communitization, unitization, forced-pooling, or otherwise) or until a non-standard unit, eliminating such interest, has been approved by the Division.



OPERATOR CERTIFICATION

I hereby certify that the information contained herein is true and complete to the best of my knowledge and belief.

Signature *Chuck Morgan*
Printed Name **Chuck Morgan**
Position **Engr.**
Company **SDX Resources**
Date **1/27/93**

SURVEYOR CERTIFICATION

I hereby certify that the well location shown on this plat was plotted from field notes of actual surveys made by me or under my supervision, and that the same is true and correct to the best of my knowledge and belief.

Date Surveyed
JANUARY 28, 1993
Signature & Seal of Professional Surveyor

Certificate No. **5412**
NM PE & SE 5412

0 330 660 990 1320 1650 1980 2310 2640 2000 1500 1000 500 0