

Submit to Appropriate
District Office
State Lease - 6 copies
Fee Lease - 5 copies

State of New Mexico
Energy, Minerals and Natural Resources Department

Form C-101
Revised 1-1-89

1574
BOP
00

DISTRICT I
P.O. Box 1980, Hobbs, NM 88240

DISTRICT II
P.O. Drawer DD, Artesia, NM 88210

DISTRICT III
1000 Rio Brazos Rd., Aztec, NM 87410

OIL CONSERVATION DIVISION

P.O. Box 2088
Santa Fe, New Mexico 87504-2088

RECEIVED

MAR 02 1993

API NO. (assigned by OCD on New Wells)

30-015-27335

5. Indicate Type of Lease

STATE ☐

FEE ☒

6. State Oil & Gas Lease No.

APPLICATION FOR PERMIT TO DRILL, DEEPEN OR PLUG BACK

1a. Type of Work:

DRILL ☒

RE-ENTER ☐

DEEPEN ☐

PLUG BACK ☐

b. Type of Well:

OIL
WELL ☒

GAS
WELL ☐

OTHER ☐

SINGLE
ZONE ☐

MULTIPLE
ZONE ☐

7. Lease Name or Unit Agreement Name

Hooper "AMP"

2. Name of Operator

Yates Petroleum Corporation

8. Well No.

1

3. Address of Operator

105 South Fourth Street, Artesia, New Mexico 88210

9. Pool name or Wildcat

N. Dagger Draw Upper Penn

4. Well Location

Unit Letter M : 820 Feet From The South Line and 660 Feet From The West Line

Section 21

Township 19S

Range 25E

NMPM

Eddy

County

10. Proposed Depth

8300'

11. Formation

Canyon

12. Rotary or C.T.

Rotary

13. Elevations (Show whether DF, RT, GR, etc.)

3503

14. Kind & Status Plug Bond

Blanket

15. Drilling Contractor

Not Designated

16. Approx. Date Work will start

ASAP

17.

PROPOSED CASING AND CEMENT PROGRAM

SIZE OF HOLE	SIZE OF CASING	WEIGHT PER FOOT	SETTING DEPTH	SACKS OF CEMENT	EST. TOP
14 3/4"	9 5/8"	36# J-55	1100'	1100 sacks	Circulated
8 3/4"	7"	23 & 26#	TD	As warranted	
		J-55; N-80			

Yates Petroleum Corporation proposes to drill and test the Canyon and intermediate formations. Approximately 1100' of surface casing will be set and cement circulated to shut off gravel and cavings. If Commercial, production casing will be run and cemented, will perforate and stimulate as needed for production.

MUD PROGRAM: FW Gel/LCM to 1100'; FW to 5200'; cut Brine to TD

BOP PROGRAM: BOP's and hydril will be installed on 9 5/8" casing and tested daily.

POST 20-1
3-3-93
NEWLOG 2 API

IN ABOVE SPACE DESCRIBE PROPOSED PROGRAM: IF PROPOSAL IS TO DEEPEN OR PLUG BACK, GIVE DATA ON PRESENT PRODUCTIVE ZONE AND PROPOSED NEW PRODUCTIVE ZONE. GIVE BLOWOUT PREVENTER PROGRAM, IF ANY.

I hereby certify that the information above is true and complete to the best of my knowledge and belief.

SIGNATURE

Ken Boudin

TITLE

Landman

DATE

3-1-93

TYPE OR PRINT NAME

TELEPHONE NO.

(This space for State Use)

APPROVED BY

Mark Ashby

TITLE

Geologist

DATE

3-4-93

CONDITIONS OF APPROVAL, IF ANY:

NOTIFY N.M.O.C.D. IN SUFFICIENT
TIME TO WITNESS CEMENTING THE
CASING

APPROVAL VALID FOR 180 DAYS
PERMIT EXPIRES 9-4-93
UNLESS DRILLING UNDERWAY



LTR



Job separation sheet

Submit to Appropriate
District Office
State Lease - 4 copies
Fee Lease - 3 copies

State of New Mexico
Energy, Minerals and Natural Resources Department

Form C-102
Revised 1-1-89

OIL CONSERVATION DIVISION

P.O. Box 2088

Santa Fe, New Mexico 87504-2088

DISTRICT I

P.O. Box 1980, Hobbs, NM 88240

DISTRICT II

P.O. Drawer DD, Artesia, NM 88210

DISTRICT III

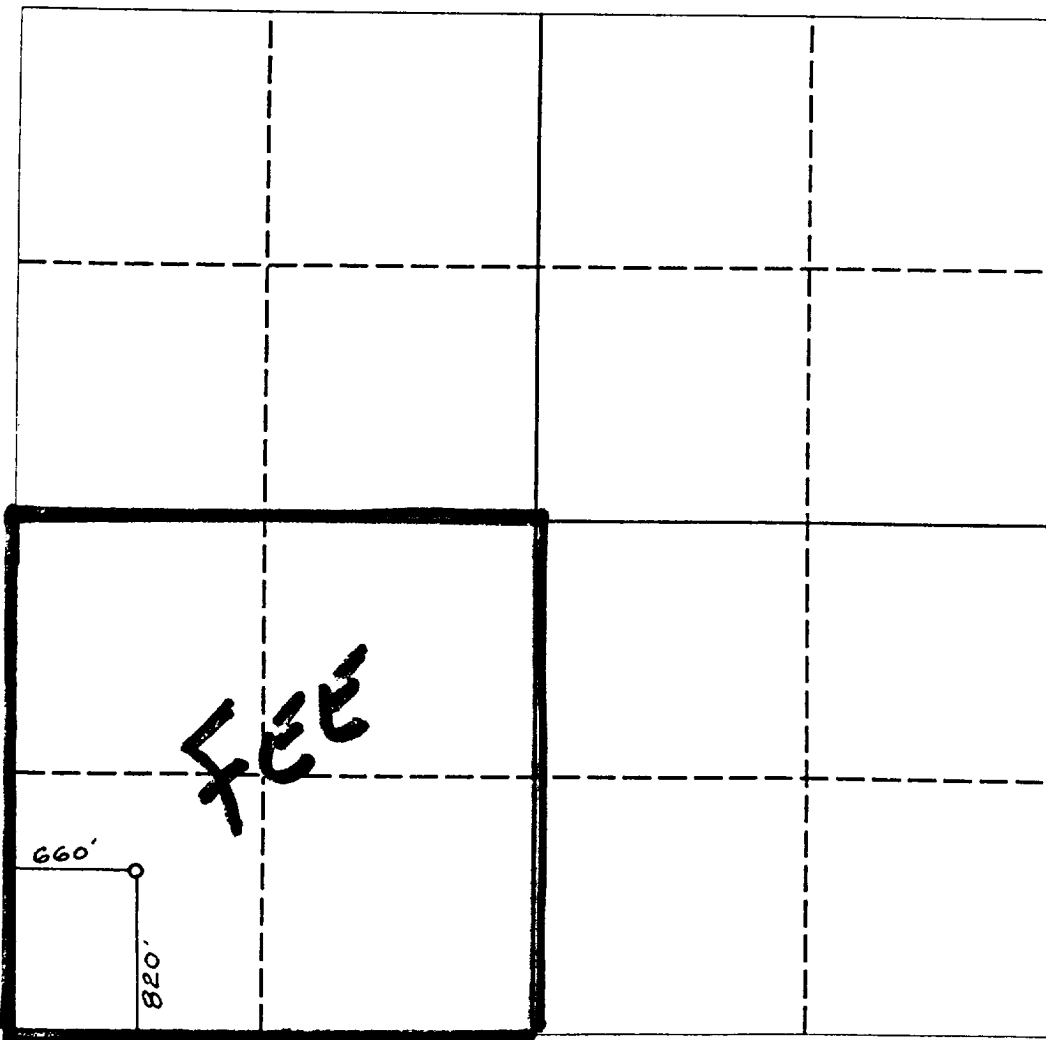
1000 Rio Brazos Rd., Aztec, NM 87410

WELL LOCATION AND ACREAGE DEDICATION PLAT

All Distances must be from the outer boundaries of the section

Operator YATES PETROLEUM CORPORATION			Lease HOOPER AMP		Well No. 1
Unit Letter M	Section 21	Township 19 SOUTH	Range 25 EAST	County EDDY COUNTY, NM	
Actual Footage Location of Well: 820 feet from the SOUTH line and 660 feet from the WEST line					
Ground level Elev. 3503.	Producing Formation Cisco Canyon		Pool N. Dagger Draw Upper Penn		Dedicated Acreage: 160 Acres

1. Outline the acreage dedicated to the subject well by colored pencil or hachure marks on the plat below.
2. If more than one lease is dedicated to the well, outline each and identify the ownership thereof (both as to working interest and royalty).
3. If more than one lease of different ownership is dedicated to the well, have the interest of all owners been consolidated by communitization, unitization, force-pooling, etc.?
☐ Yes ☐ No If answer is "yes" type of consolidation _____
If answer is "no" list the owners and tract descriptions which have actually been consolidated. (Use reverse side of this form if necessary). _____
No allowable will be assigned to the well until all interests have been consolidated (by communitization, unitization, forced-pooling, or otherwise) or until a non-standard unit, eliminating such interest, has been approved by the Division.



0 330 660 990 1320 1650 1980 2310 2640 2000 1500 1000 500 0

OPERATOR CERTIFICATION

I hereby certify that the information contained herein is true and complete to the best of my knowledge and belief.

Signature *Ken Beardsley*
Printed Name **Ken Beardsley**
Position **Landman**
Company **Yates Pet. Corp.**
Date **3-1-93**

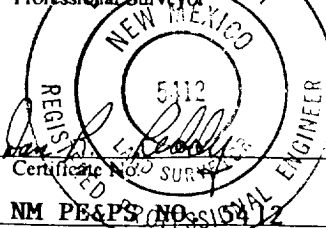
SURVEYOR CERTIFICATION

I hereby certify that the well location shown on this plat was plotted from field notes of actual surveys made by me or under my supervision, and that the same is true and correct to the best of my knowledge and belief.

Date Surveyed

FEBRUARY 27, 1993

Signature & Seal of
Professional Surveyor



Certificate No. **5412**
NM PE&PS NO. **5412**