

OIL CONSERVATION DIVISION

P.O. Box 2088
Santa Fe, New Mexico 87504-2088

DISTRICT I
P.O. Box 1980, Hobbs, NM 88240

DISTRICT II
P.O. Drawer DD, Artesia, NM 88210

DISTRICT III
1000 Rio Brazos Rd., Aztec, NM 87410

WELL LOCATION AND ACREAGE DEDICATION PLAT

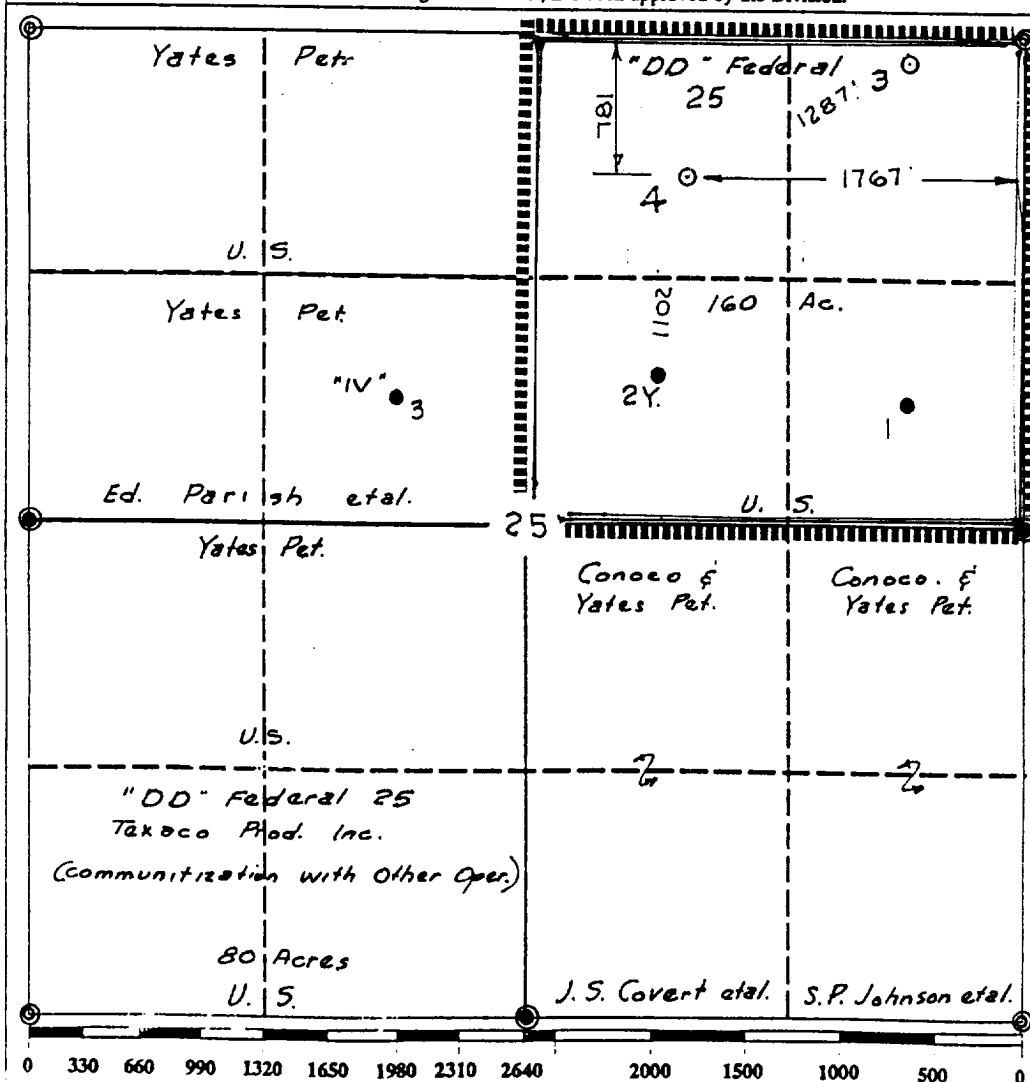
All Distances must be from the outer boundaries of the section

Operator TEXACO EXPLORATION AND PROD. Inc.			Lease "DD" Federal 25		Well No. 4
Unit Letter B	Section 25	Township 19-South	Range 24-East	County Eddy	NMPM
Actual Footage Location of Well: 781 feet from the North line and 1767 feet from the East line					
Ground level Elev. 3582	Producing Formation Cisco-Canyon	Pool Dagger Draw Upper Penn., N.		Dedicated Acreage: 160 Acres	

- Outline the acreage dedicated to the subject well by colored pencil or hatchure marks on the plat below.
- If more than one lease is dedicated to the well, outline each and identify the ownership thereof (both as to working interest and royalty).
- If more than one lease of different ownership is dedicated to the well, have the interest of all owners been consolidated by communitization, unitization, force-pooling, etc.?
☐ Yes ☐ No If answer is "yes" type of consolidation _____

If answer is "no" list the owners and tract descriptions which have actually been consolidated. (Use reverse side of this form if necessary.)

No allowable will be assigned to the well until all interests have been consolidated (by communitization, unitization, forced-pooling, or otherwise) or until a non-standard unit, eliminating such interest, has been approved by the Division.



OPERATOR CERTIFICATION

I hereby certify that the information contained herein is true and complete to the best of my knowledge and belief.

Signature: *Royce D. Mariott*
Printed Name: **Royce D. Mariott**
Position: **Division Surveyor**
Company: **Texaco Expl. & Prod.**
Date: **May 7, 1993**

SURVEYOR CERTIFICATION

I hereby certify that the well location shown on this plat was plotted from field notes of actual surveys made by me or under my supervision, and that the same is true and correct to the best of my knowledge and belief.

Date Surveyed: **May 6, 1993**
Signature & Seal of Professional Surveyor: *John S. Piper*

Certificate No. **0254 John S. Piper**

Sheet 8 of 8