

Submit to Appropriate
District Office
State Lease - 6 copies
Fee Lease - 5 copies

State of New Mexico
Energy, Minerals and Natural Resources Department

Form C-101
Revised 1-1-89

OIL CONSERVATION DIVISION

P.O. Box 2088
Santa Fe, New Mexico 87504-2088

DISTRICT I
P.O. Box 1980, Hobbs, NM 88240

DISTRICT II
P.O. Drawer DD, Artesia, NM 88210

DISTRICT III
1000 Rio Brazos Rd., Aztec, NM 87410

API NO. (assigned by OCD on New Wells)

30-015-27527

5. Indicate Type of Lease

STATE ☒

FEE ☐

6. State Oil & Gas Lease No.

648

APPLICATION FOR PERMIT TO DRILL, DEEPEN, OR PLUG BACK

1a. Type of Work:

DRILL ☒

RE-ENTER ☐

DEEPEN ☐

PLUG BACK ☐

b. Type of Well:

OIL

WELL ☒

GAS

WELL ☐

OTHER ☐

SINGLE

ZONE ☐

MULTIPLE

ZONE ☐

7. Lease Name or Unit Agreement Name

East Millman Unit

2. Name of Operator

SDX Resources, Inc. ✓

8. Well No.

211

3. Address of Operator

Post Office Box 5061, Midland, Texas 79704

9. Pool name or Wildcat

East Millman-Q-GR-SA

4. Well Location

Unit Letter

O

330

Feet From The

S

Line and

2462

Feet From The

E

Line

Section

14

Township

19S

Range

28E

NMPM

Eddy

County

10. Proposed Depth

2900'

11. Formation

Grayburg

12. Rotary or C.T.

Rotary

13. Elevations (Show whether DF, RT, GR, etc.)

3402' Grd.

14. Kind & Status Plug Bond

Blanket

15. Drilling Contractor

Capstar

16. Approx. Date Work will start

July 1, 1993

17.

PROPOSED CASING AND CEMENT PROGRAM

SIZE OF HOLE	SIZE OF CASING	WEIGHT PER FOOT	SETTING DEPTH	SACKS OF CEMENT	EST. TOP
12 1/4"	8 5/8"	24#	350'±	300	Surface
7 7/8"	5 1/2"	15.50#	2850'±/-	300	Surface

Plan to drill a 12 1/4" hole to approximately 350' and set 8 5/8" surface casing. Circulate "C" cement. Drill 7 7/8" hole to TD. Run open hole logs (LDT-CNL-GR and DLL). Run 5 1/2" casing and circulate 50/50 POZ "C" cement. Perforate the Grayburg-Queen and stimulate as necessary for optimum production.

Mud Program: Fresh water mud 0' - 350'.
Salt water mud 350' - TD.

DO 1
7-9-93
W.L. API

IN ABOVE SPACE DESCRIBE PROPOSED PROGRAM: IF PROPOSAL IS TO DEEPEN OR PLUG BACK, GIVE DATA ON PRESENT PRODUCTIVE ZONE AND PROPOSED NEW PRODUCTIVE ZONE. GIVE BLOWOUT PREVENTER PROGRAM, IF ANY.

I hereby certify that the information above is true and complete to the best of my knowledge and belief.

SIGNATURE Rebecca Robinson TITLE Agent DATE 6-23-93

TYPE OR PRINT NAME Rebecca Robinson TELEPHONE NO. _____

(This space for State Use)

APPROVED BY Mark Behlitz TITLE GEOLOGIST DATE 7-7-93

CONDITIONS OF APPROVAL, IF ANY:

APPROVAL VALID FOR 180 DAYS
PERMIT EXPIRES 1-7-94
EXPIRATION DATE: 1-7-94

NSL # 3219

Submit to Appropriate
District Office
State Lease - 4 copies
Fee Lease - 3 copies

State of New Mexico
Energy, Minerals and Natural Resources Department

Form C-102
Revised 1-1-89

OIL CONSERVATION DIVISION

DISTRICT I
P.O. Box 1980, Hobbs, NM 88240

DISTRICT II
P.O. Drawer DD, Artesia, NM 88210

DISTRICT III
1000 Rio Brazos Rd., Aztec, NM 87410

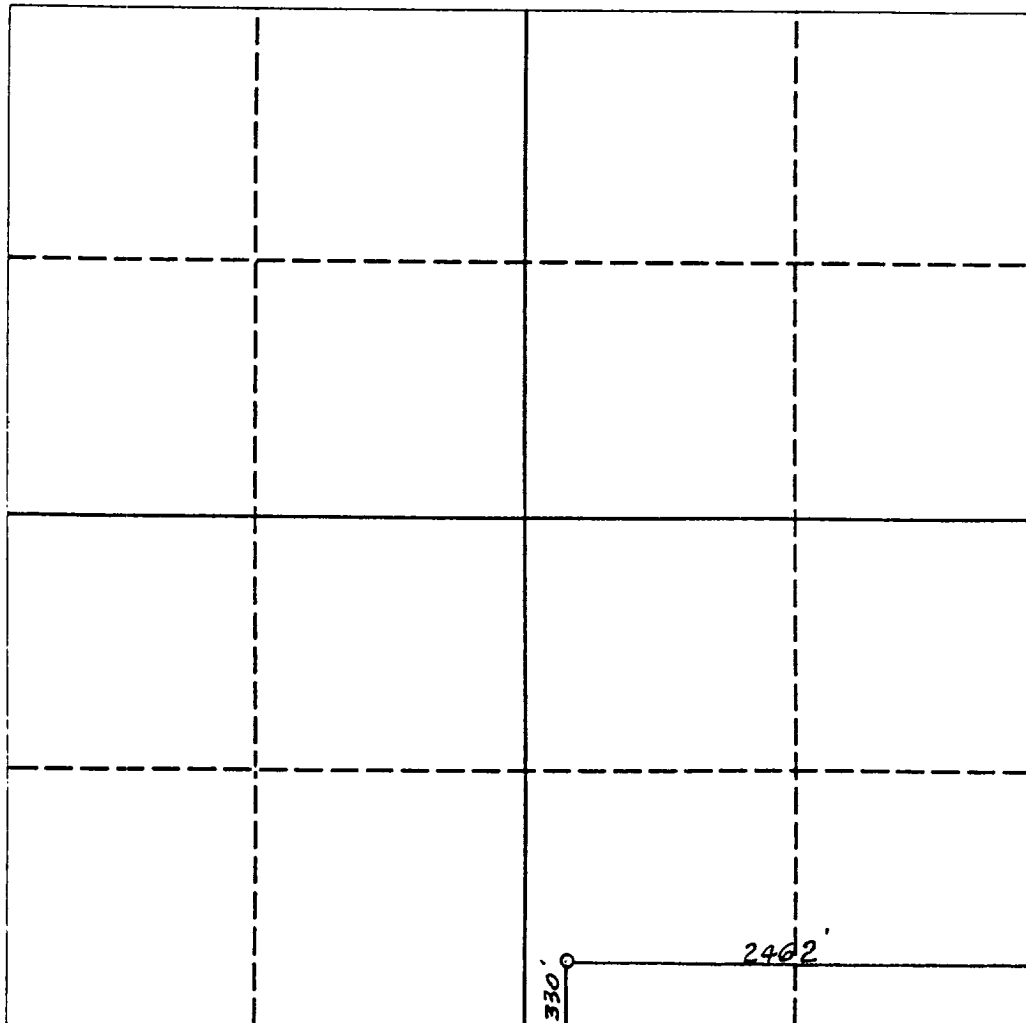
P.O. Box 2088
Santa Fe, New Mexico 87504-2088

WELL LOCATION AND ACREAGE DEDICATION PLAT

All Distances must be from the outer boundaries of the section

Operator SDX RESOURCES, INC.			Lease EAST MILLMAN UNIT		Well No. 211
Unit Letter 0	Section 14	Township 19 SOUTH	Range 28 EAST	County EDDY COUNTY, NM	
Actual Footage Location of Well: 330 feet from the SOUTH line and 2462 feet from the EAST line					
Ground level Elev. 3402.	Producing Formation Q-GR-SA	Pool East Millman-Q-GR-SA		Dedicated Acreage: 40 Acres	

- Outline the acreage dedicated to the subject well by colored pencil or hatchure marks on the plat below.
- If more than one lease is dedicated to the well, outline each and identify the ownership thereof (both as to working interest and royalty).
- If more than one lease of different ownership is dedicated to the well, have the interest of all owners been consolidated by communitization, unitization, force-pooling, etc.?
☐ Yes ☐ No If answer is "yes" type of consolidation _____
If answer is "no" list the owners and tract descriptions which have actually been consolidated. (Use reverse side of this form if necessary). _____
No allowable will be assigned to the well until all interests have been consolidated (by communitization, unitization, forced-pooling, or otherwise) or until a non-standard unit, eliminating such interest, has been approved by the Division.



OPERATOR CERTIFICATION

I hereby certify that the information contained herein is true and complete to the best of my knowledge and belief.

Signature *Chuck Morgan*
Printed Name **Chuck Morgan**
Position **Engineer**
Company **SDX Resources, Inc.**
Date **June 23, 1993**

SURVEYOR CERTIFICATION

I hereby certify that the well location shown on this plat was plotted from field notes of actual surveys made by me or under my supervision, and that the same is true and correct to the best of my knowledge and belief.

Date Surveyed **JUNE 21, 1993**
Signature & Seal of Professional Surveyor
[Signature]
Professional Engineer
NEW MEXICO
5412
REGISTERED
CERTIFICATE NO. SURV
NM PE 5412 NO. 5412

0 330 660 990 1320 1650 1980 2310 2640 2970 3300 3630 3960 4290 4620 4950 5280 5610 5940 6270 6600

