

Submit to Appropriate
District Office
State Lease - 6 copies
Fee Lease - 5 copies

State of New Mexico
Energy, Minerals and Natural Resources Department

Form C-101
Revised 1-1-89

DISTRICT I
P.O. Box 1980, Hobbs, NM 88240

DISTRICT II
P.O. Drawer DD, Artesia, NM 88210

DISTRICT III
1000 Rio Brazos Rd., Aztec, NM 87410

OIL CONSERVATION DIVISION

P.O. Box 2088
Santa Fe, New Mexico 87504-2088

RECEIVED

AUG 26 1993

API NO. (assigned by OCD on New Wells)

30-015-2764

5. Indicate Type of Lease

STATE ☐

FEE ☒

6. State Oil & Gas Lease No.

APPLICATION FOR PERMIT TO DRILL, DEEPEN, OR PLUG BACK

1a. Type of Work: DRILL <input checked="" type="checkbox"/> RE-ENTER <input type="checkbox"/> DEEPEN <input type="checkbox"/> PLUG BACK <input type="checkbox"/>		7. Lease Name or Unit Agreement Name Voight "AJD" Com			
b. Type of Well: OIL WELL <input checked="" type="checkbox"/> GAS WELL <input type="checkbox"/> OTHER <input type="checkbox"/>		8. Well No. 3			
2. Name of Operator YATES PETROLEUM CORPORATION		9. Pool name or Wildcat N. Dagger Draw Upper Penn			
3. Address of Operator 105 South Fourth Street, Artesia, New Mexico 88210					
4. Well Location Unit Letter C : 660' Feet From The North Line and 1980' Feet From The West Line Section 29 Township 19 South Range 25 East NMPM Eddy County					
10. Proposed Depth 8300'		11. Formation Canyon			
12. Rotary or C.T. Rotary					
13. Elevations (Show whether DF, RT, GR, etc.) 3525'		14. Kind & Status Plug. Bond Blanket			
15. Drilling Contractor Undesignated		16. Approx. Date Work will start Rotary			
17. PROPOSED CASING AND CEMENT PROGRAM					
SIZE OF HOLE	SIZE OF CASING	WEIGHT PER FOOT	SETTING DEPTH	SACKS OF CEMENT	EST. TOP
14 3/4"	9 5/8"	36# J-55	1100'	1100 sacks	Circulated
8 3/4"	7"	23-26#	TD	As warranted	
		J-55 & N-80			

Yates Petroleum Corporation proposes to drill and test the Canyon and intermediate formations. Approximately 1100' of surface casing will be set and cement circulated to shut off gravel and cavings. If commercial, production casing will be run and cemented, will perforate and stimulate as needed for production.

MUD PROGRAM: FW gel/LCM to 1100'; FW to 5000'; cut Brine to 7200'; SW gel/Starch to TD.

BOP PROGRAM: BOP's and hydrill will be installed on the 9 5/8" casing and tested daily.

10-
8-21-93
4-7481

IN ABOVE SPACE DESCRIBE PROPOSED PROGRAM: IF PROPOSAL IS TO DEEPEN OR PLUG BACK, GIVE DATA ON PRESENT PRODUCTIVE ZONE AND PROPOSED NEW PRODUCTIVE ZONE. GIVE BLOWOUT PREVENTER PROGRAM, IF ANY.

I hereby certify that the information above is true and complete to the best of my knowledge and belief.

SIGNATURE Ken Brardemphl TITLE LANDMAN DATE 8/26/93

TYPE OR PRINT NAME KEN BRARDEMPHL TELEPHONE NO. 748-1471

(This space for State Use)
ORIGINAL SIGNED BY
MIKE WILLIAMS
SUPERVISOR, DISTRICT II

APPROVED BY _____ TITLE _____ DATE _____

CONDITIONS OF APPROVAL: APPROVAL VALID FOR 180 DAYS

PERMIT EXPIRES 2-26-94
UNLESS DRILLING UNDERWAY

NOTED N.M.O.C.D. IN SUFFICIENT
TIME TO WITNESS CEMENTING THE
9/8 CASING

AUG 26 1993

Submit to Appropriate
District Office
State Lease - 4 copies
Fee Lease - 3 copies

State of New Mexico
Energy, Minerals and Natural Resources Department

Form C-102
Revised 1-1-89

OIL CONSERVATION DIVISION

P.O. Box 2088

Santa Fe, New Mexico 87504-2088

DISTRICT I

P.O. Box 1980, Hobbs, NM 88240

DISTRICT II

P.O. Drawer DD, Artesia, NM 88210

DISTRICT III

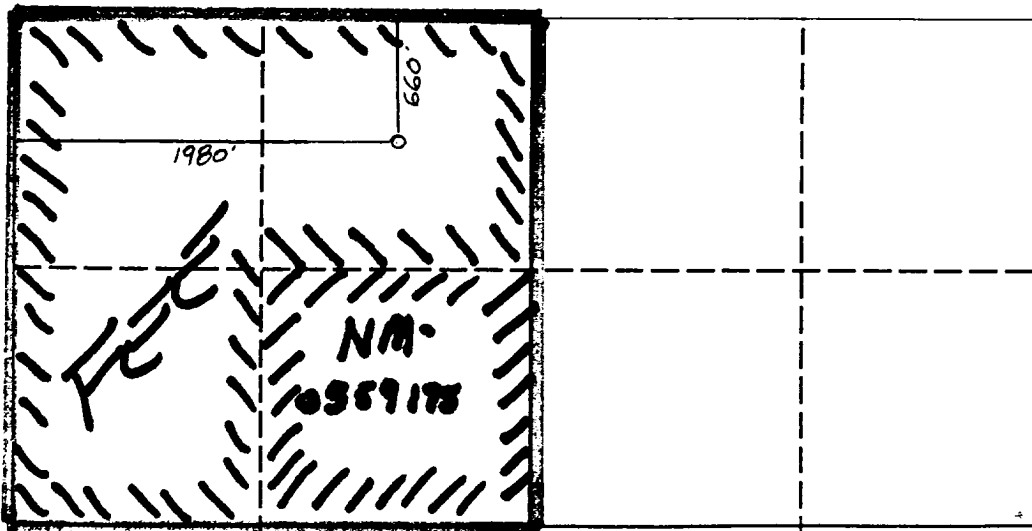
1000 Rio Brazos Rd., Aztec, NM 87410

WELL LOCATION AND ACREAGE DEDICATION PLAT

All Distances must be from the outer boundaries of the section

Operator YATES PETROLEUM CORPORATION			Lease VOIGHT "AJD" COM		Well No. 3
Unit Letter C	Section 29	Township 19 SOUTH	Range 25 EAST	County EDDY COUNTY, NM	
Actual Footage Location of Well: 660 feet from the NORTH line and 1980 feet from the WEST line					
Ground level Elev. 3525.	Producing Formation Cisco Canyon		Pool N. Dagger Draw Upper Penn	Dedicated Acreage: 160 Acres	

- Outline the acreage dedicated to the subject well by colored pencil or hachure marks on the plat below.
- If more than one lease is dedicated to the well, outline each and identify the ownership thereof (both as to working interest and royalty).
- If more than one lease of different ownership is dedicated to the well, have the interest of all owners been consolidated by communitization, unitization, force-pooling, etc.?
☒ Yes ☐ No If answer is "yes" type of consolidation Communitization
If answer is "no" list the owners and tract descriptions which have actually been consolidated. (Use reverse side of this form if necessary).
No allowable will be assigned to the well until all interests have been consolidated (by communitization, unitization, forced-pooling, or otherwise) or until a non-standard unit, eliminating such interest, has been approved by the Division.



OPERATOR CERTIFICATION

I hereby certify that the information contained herein is true and complete to the best of my knowledge and belief.

Signature

Printed Name

Position

Company

Date

SURVEYOR CERTIFICATION

I hereby certify that the well location shown on this plat was plotted from field notes of actual surveys made by me or under my supervision, and that the same is true and correct to the best of my knowledge and belief.

Date Surveyed

AUGUST 7, 1993

Signature & Seal of
Professional Surveyor



0 330 660 990 1320 1650 1980 2310 2640 2000 1500 1000 500 0

YATES PETROLEUM CORPORATION

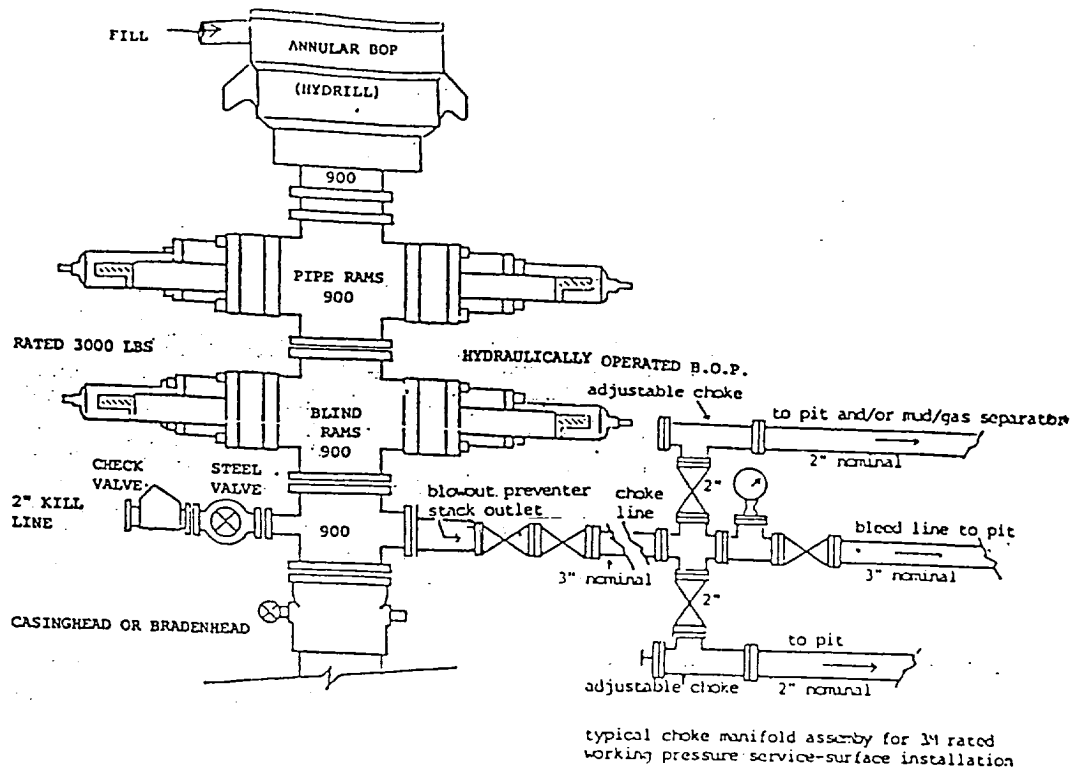


EXHIBIT B

THE FOLLOWING CONSTITUTES THE MINIMUM BLOWOUT PREVENTER
REQUIREMENTS FOR 3000 PSI WP SYSTEMS

1. All preventers to be hydraulically operated with secondary manual controls installed prior to drilling out from under casing.
2. Choke outlet to be a minimum of 3" diameter.
3. Kill line to be of all steel construction of 3" minimum diameter.
4. All connections from operating manifolds to preventers to be all steel. Hole or tube to be a minimum of one inch in diameter.
5. The available closing pressure shall be at least 15% in excess of that required with sufficient volume to operate the B.O.P.'s.
6. All connections to and from preventer to have a pressure rating equivalent to that of the B.O.P.'s.
7. Inside blowout preventer to be available on rig floor.
8. Operating controls to be located a safe distance from the rig floor.
9. Hole must be kept filled on trips below intermediate casing.