

Submit to Appropriate
District Office
State Lease - 4 copies
Fee Lease - 3 copies

State of New Mexico
Energy, Minerals and Natural Resources Department

Form C-102
Revised 1-1-89

OIL CONSERVATION DIVISION

DISTRICT I
P.O. Box 1980, Hobbs, NM 88240

P.O. Box 2088
Santa Fe, New Mexico 87504-2088

DISTRICT II
P.O. Drawer DD, Artesia, NM 88210

DISTRICT III
1000 Rio Brazos Rd., Aztec, NM 87410

WELL LOCATION AND ACREAGE DEDICATION PLAT

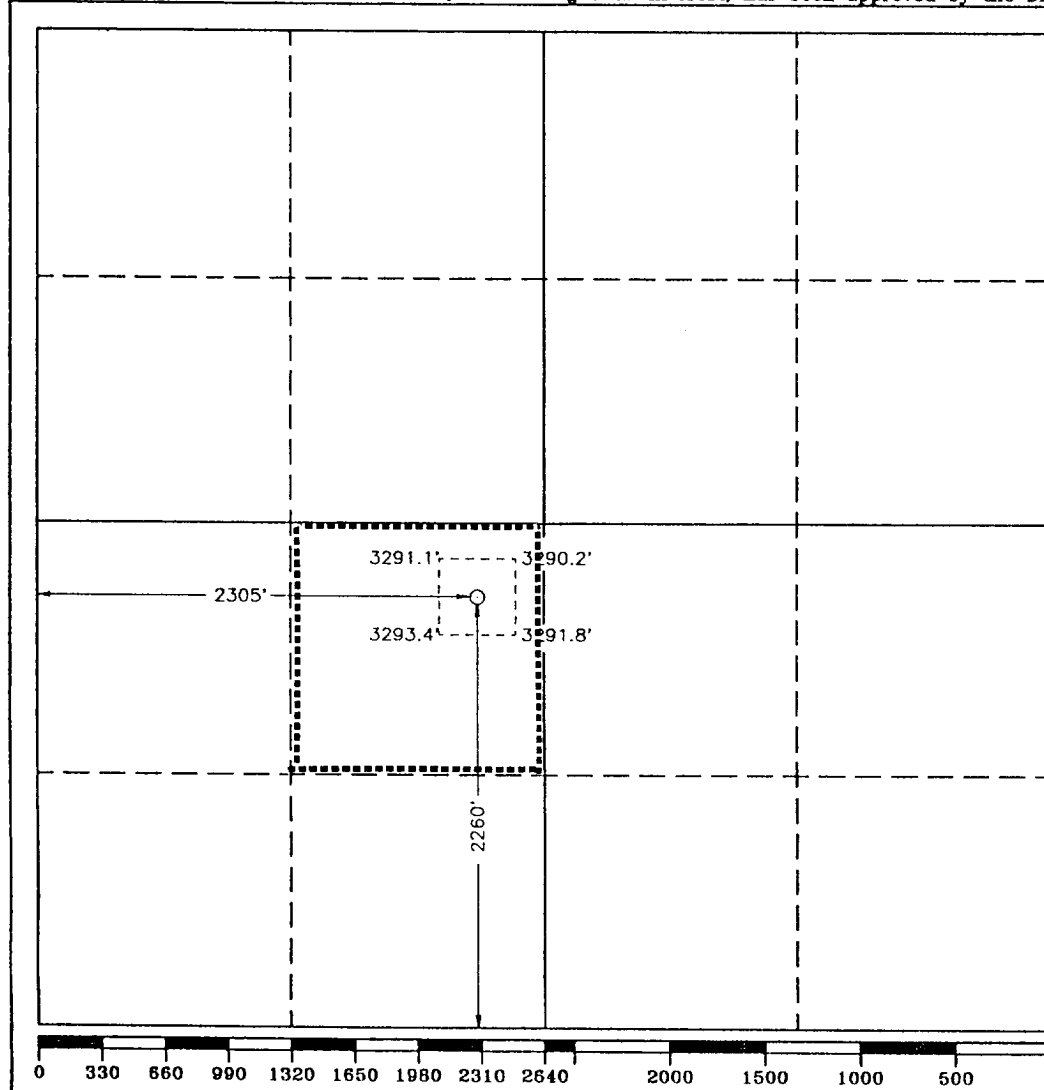
All Distances must be from the outer boundaries of the section

Operator SPENCE ENERGY CO.		Lease UNOCAL FEDERAL 23		Well No. 2	
Unit Letter K	Section 23	Township 19 SOUTH	Range 30 EAST NMPM	County EDDY	
Actual Footage Location of Well: 2260 feet from the SOUTH line and 2305 feet from the WEST line					
Ground Level Elev. 3293.4'	Producing Formation Yates		Pool N. Hackberry - Yates-SR	Dedicated Acreage: 40 Acres	

1. Outline the acreage dedicated to the subject well by colored pencil or hachure marks on the plat below.
2. If more than one lease is dedicated to the well, outline each and identify the ownership thereof (both as to working interest and royalty).
NA
3. If more than one lease of different ownership is dedicated to the well, have the interest of all owners been consolidated by communitization, unitization, force-pooling, etc.?
☐ Yes ☐ No If answer is "yes" type of consolidation NA

If answer is "no" list of owners and tract descriptions which have actually been consolidated. (Use reverse side of this form necessary.)

No allowable will be assigned to the well unit all interests have been consolidated (by communitization, unitization, forced-pooling, otherwise) or until a non-standard unit, eliminating such interest, has been approved by the Division.



OPERATOR CERTIFICATION

I hereby certify the the information contained herein is true and complete to the best of my knowledge and belief.

Signature
JERRY W. LONG
Printed Name
JERRY W. LONG
Position
Permit Agent

Company
SPENCE ENERGY COMPANY
Date
September 11, 1993

SURVEYOR CERTIFICATION

I hereby certify that the well location shown on this plat was plotted from field notes of actual surveys made by me or under my supervision, and that the same is true and correct to the best of my knowledge and belief.

Date Surveyed
AUGUST 31, 1993

Signature & Seal of
Professional Surveyor
JOHN W. WEST, 676
EDISON, 3239
GARY L. JONES, 7877
NEW MEXICO
7977

93-11-1662