

District I
PO Box 1980, Hobbs, NM 88241-1980
District II
PO Drawer DD, Artesia, NM 88211-0719
District III
1000 Rio Brazos Rd., Aztec, NM 87410
District IV
PO Box 2088, Santa Fe, NM 87504-2088

State of New Mexico
Energy, Minerals & Natural Resources Department

OIL CONSERVATION DIVISION
PO Box 2088
Santa Fe, NM 87504-2088

Form C-101
Revised February 21, 1994
Instructions on back
Submit to Appropriate District Office
State Lease - 6 Copies
Fee Lease - 5 Copies

☐ AMENDED REPORT

APPLICATION FOR PERMIT TO DRILL, RE-ENTER, DEEPEN, PLUGBACK, OR ADD A ZONE

¹ Operator Name and Address. SDX Resources, Inc. P. O. Box 5061 Midland, TX 79704		¹ OGRID Number 020451
		¹ API Number 30-015-27780 *
⁴ Property Code 13077	⁵ Property Name AR 22 STATE	⁶ Well No. 1

⁷ Surface Location									
UL or lot no.	Section	Township	Range	Lot Ida	Feet from the	North/South line	Feet from the	East/West line	County
I	22	19S	28E		2310	South	967	East	Eddy

⁸ Proposed Bottom Hole Location If Different From Surface									
UL or lot no.	Section	Township	Range	Lot Ida	Feet from the	North/South line	Feet from the	East/West line	County
⁹ Proposed Pool 1 Millman -QN -GR -SA -East					¹⁰ Proposed Pool 2				

¹¹ Work Type Code P	¹² Well Type Code O	¹³ Cable/Rotary	¹⁴ Lease Type Code S	¹⁵ Ground Level Elevation GL 3386'
¹⁶ Multiple No	¹⁷ Proposed Depth 2750', PBD 2130'	¹⁸ Formation Queen	¹⁹ Contractor N/A	²⁰ Spud Date 11/27/95

²¹ Proposed Casing and Cement Program					
Hole Size	Casing Size	Casing weight/foot	Setting Depth	Sacks of Cement	Estimated TOC
* 12-1/4"	8-5/8"	24#	388'	350 sxs C1 C	Surf
* 7-7/8"	5-1/2"	15.5#	2746'	300 sxs 50/50	
				Poz + 475 sxs	Lite
	2-7/8" (Tubing)		2516'*(Grayburg Completion)		

²² Describe the proposed program. If this application is to DEEPEN or PLUG BACK give the data on the present productive zone and proposed new productive zone. Describe the blowout prevention program, if any. Use additional sheets if necessary.

Well was spudded 1/6/94 and completed in Grayburg zone. Perfs 2163-2558' were acidized w/3000 gals 15% NEFE & frac w/56,070 gals gelled wtr w/168,820# 12/20 sand. Completed on 2/24/95 producing 35 BO, 95 BW, gas TSTM. Presently producing 2-3 BO/D & 15-20 BW/D.

Propose to recompleate in the Queen (1701'-2020'.) RBP will be set @ 2130'. Perfs will be acidized w/3500 gals 15% MSR acid. Zone will be swabbed & fraced w/40,000 gals 25 Quality foam w/80,000# 12/20 sand. Well will be swabbed and flowed back to establish rate and put on production test.

²³ I hereby certify that the information given above is true and complete to the best of my knowledge and belief. Signature: <i>Janice Courtney</i>		OIL CONSERVATION DIVISION	
Printed name: Janice Courtney		Approved by: ORIGINAL SIGNED BY TIM W. GUM	
Title: Regulatory Tech		DISTRICT II SUPERVISOR	
Date: 11/13/95		Approval Date: 11-20-95	Expiration Date: 5-20-96
Phone: 915/685-5061		Conditions of Approval Attached <input type="checkbox"/>	

Submit to Appropriate
District Office
State Lease - 4 copies
Fee Lease - 3 copies

State of New Mexico
Energy, Minerals and Natural Resources Department

Form C-102
Revised 1-1-89

OIL CONSERVATION DIVISION

P.O. Box 2088
Santa Fe, New Mexico 87504-2088

DISTRICT I
P.O. Box 1980, Hobbs, NM 88240

DISTRICT II
P.O. Drawer DD, Artesia, NM 88210

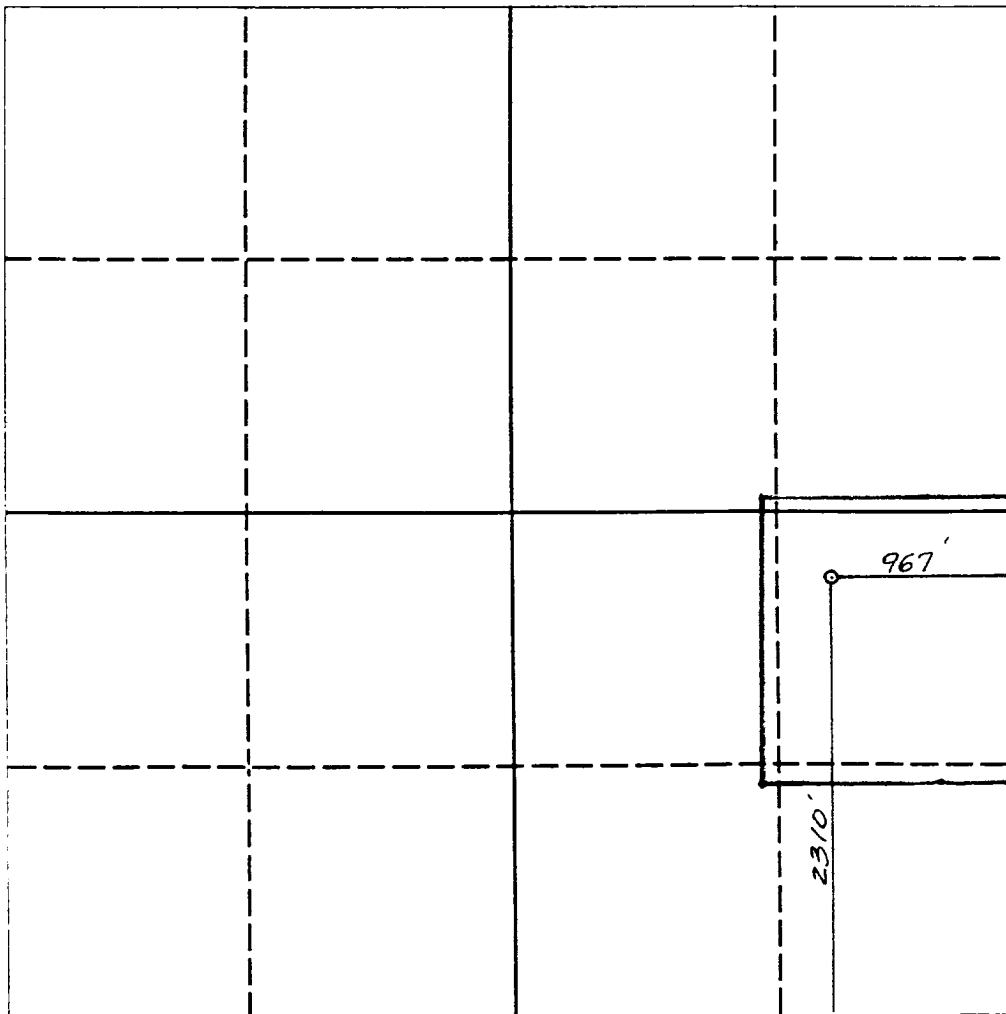
DISTRICT III
1000 Rio Brazos Rd., Aztec, NM 87410

WELL LOCATION AND ACREAGE DEDICATION PLAT

All Distances must be from the outer boundaries of the section

Operator SDX RESOURCES, INC.			Lease AR 22 STATE		Well No. 1
Unit Letter I	Section 22	Township 19 SOUTH	Range 28 EAST	County EDDY COUNTY, NM	
Actual Footage Location of Well: 2310 feet from the SOUTH line and 967 feet from the EAST line					
Ground level Elev. 3386.	Producing Formation Q_w - G_b - S_A		Pool E. Millman Q_w - G_b - S_A	Dedicated Acreage: 40 Acres	

- Outline the acreage dedicated to the subject well by colored pencil or hatchure marks on the plat below.
- If more than one lease is dedicated to the well, outline each and identify the ownership thereof (both as to working interest and royalty).
- If more than one lease of different ownership is dedicated to the well, have the interest of all owners been consolidated by communitization, unitization, force-pooling, etc.?
☐ Yes ☐ No If answer is "yes" type of consolidation _____
If answer is "no" list the owners and tract descriptions which have actually been consolidated. (Use reverse side of this form if necessary.) _____
No allowable will be assigned to the well until all interests have been consolidated (by communitization, unitization, forced-pooling, or otherwise) or until a non-standard unit, eliminating such interest, has been approved by the Division.



OPERATOR CERTIFICATION

I hereby certify that the information contained herein is true and complete to the best of my knowledge and belief.

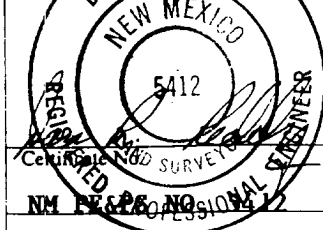
Signature *Chuck Morgan*
Printed Name **Chuck Morgan**
Position **Engr.**
Company **SDX Resources**
Date **12/9/93**

SURVEYOR CERTIFICATION

I hereby certify that the well location shown on this plat was plotted from field notes of actual surveys made by me or under my supervision, and that the same is true and correct to the best of my knowledge and belief.

Date Surveyed
DECEMBER 9, 1993

Signature of Professional Surveyor
[Signature]



0 330 660 990 1320 1650 1980 2310 2640 2000 1500 1000 500 0