

(December 1990)

SUBMIT IN ~~REPLICATE~~(Other ~~RE~~ ~~ED~~ ~~on~~ ~~revert~~ ~~use~~)

Form approved

Budget Bureau No. 1004-0136

Expires: December 31, 1991

NM OIL CONS. CO. UNITED STATES
DRAWER DEPARTMENT OF THE INTERIOR
ARTESIA, NM BUREAU OF LAND MANAGEMENT

MAY 10 '94

APPLICATION FOR PERMIT TO DRILL OR DEEPEN**1A. TYPE OF WORK**DRILL ☒

MAR 21 1994

DEEPEN ☒O.C.D.
ARTESIA, OFFICE**B. TYPE OF WELL**OIL WELL ☒GAS WELL ☐OTHER ☐SINGLE ZONE ☒MULTIPLE ZONE ☐**2. NAME OF OPERATOR**

Devon Energy Corporation (Nevada) Attn: Debby O'Donnell

3. ADDRESS AND TELEPHONE NO.

20 North Broadway Ste 1500 Oklahoma City, OK 73102

4. LOCATION OF WELL (Report location clearly and in accordance with any State requirements.)

At surface 1690' FNL & 1940' FWL

At proposed prod. zone same

14. DISTANCE IN MILES AND DIRECTION FROM NEAREST TOWN OR POST OFFICE*

15 1/2 miles southeast of Loco Hills, NM.

15. DISTANCE FROM PROPOSED*

LOCATION TO NEAREST

PROPERTY OR LEASE LINE, FT.

(Also to nearest drig. unit line, if any)

1690'

16. NO. OF ACRES IN LEASE

400

17. NO. OF ACRES ASSIGNED TO THIS WELL

40

18. DISTANCE FROM PROPOSED LOCATION*

TO NEAREST WELL, DRILLING, COMPLETED,

OR APPLIED FOR, ON THIS LEASE, FT.

750'

19. PROPOSED DEPTH

4500'

20. ROTARY OR CABLE TOOLS

rotary

21. ELEVATIONS (Show whether DF, RT, GR, etc.)

3630'

22. APPROX. DATE WORK WILL START*

May 1, 1994

23. PROPOSED CASING AND CEMENTING PROGRAM

SIZE OF HOLE	GRADE, SIZE OF CEMENT	WEIGHT PER FOOT	SETTING DEPTH	QUANTITY OF CEMENT
17 1/2"	14"		40'	cmt with readi-mix to surface
12 1/4"	8 5/8", K-55	24 ppf	950'	280 sx Lite + 200 sx Class C
7 7/8"	5 1/2", J-55	15.5 ppf	4500'	550 sx Lite + 500 sx Class C

* We plan to circulate cement to surface on all casing strings.

Devon Energy proposes to drill to 4500'± to test the Queen Sand formation for commercial quantities of oil. If the Queen is deemed non-commercial, the wellbore will be plugged and abandoned per Federal regulations. Programs to adhere to onshore oil and gas regulations are outlined in the following exhibits and attachments.

Drilling Program**Surface Use and Operating Plan**

Exhibits #1/1-A = Blowout Prevention Equipment

Exhibit #2 = Location and Elevation Plat

Exhibit #3/3-A = Road Map and Topo Map

Exhibit #4 = Wells Within 1 Mile Radius

Exhibit #5 = Production Facilities Plat

Exhibit #6 = Rotary Rig Layout

Exhibit #7 = Casing Design

H₂S Operating Plan

The undersigned accepts all applicable terms, conditions, stipulations and restrictions concerning operations conducted on the leased land or portions thereof, as described below:

Lease #: NM 10191

Legal Description: Section 34-T18S-R31E

Formation: Queen Sand

Bond Coverage: Nationwide

BLM Bond #: CO-1104

Post FD-1
5-20-94
New to be 4 API

IN ABOVE SPACE DESCRIBE PROPOSED PROGRAM: If proposal is to deepen, give data on present productive zone and proposed new productive zone. If proposal is to drill or deepen directionally, give pertinent data on subsurface locations and measured and true vertical depths. Give blowout prevention program, if any.

24.

SIGNED

E. L. Buttross, Jr.

TITLE

E. L. Buttross, Jr.
District Engineer

DATE

March 16, 1994

(This space for Federal or State office use)

PERMIT NO.

APPROVAL DATE

Application approval does not warrant or certify that the applicant holds legal or equitable title to those rights in the subject lease which would entitle the applicant to conduct operations thereon.

CONDITIONS OF APPROVAL, IF ANY:

APPROVED BY

(ORIG. SGD.) RICHARD L. MANUS

TITLE

AREA MANAGER

DATE

MAY 6 1994

*See Instructions On Reverse Side

Title 18 U.S.C. Section 1001, makes it a crime for any person knowingly and willfully to make to any department or agency of the United States any false, fictitious or fraudulent statements or representations as to any matter within its jurisdiction.

Submit to Appropriate
District Office
State Lease - 4 copies
Fee Lease - 3 copies

State of New Mexico
Energy, Minerals and Natural Resources Department

Form C-102
Revised 1-1-89

OIL CONSERVATION DIVISION

P.O. Box 2088
Santa Fe, New Mexico 87504-2088

DISTRICT I

P.O. Box 1080, Hobbs, NM 88240

DISTRICT II

P.O. Drawer DD, Artesia, NM 88210

DISTRICT III

1000 Elc Brazos Rd., Aztec, NM 87410

WELL LOCATION AND ACREAGE DEDICATION PLAT

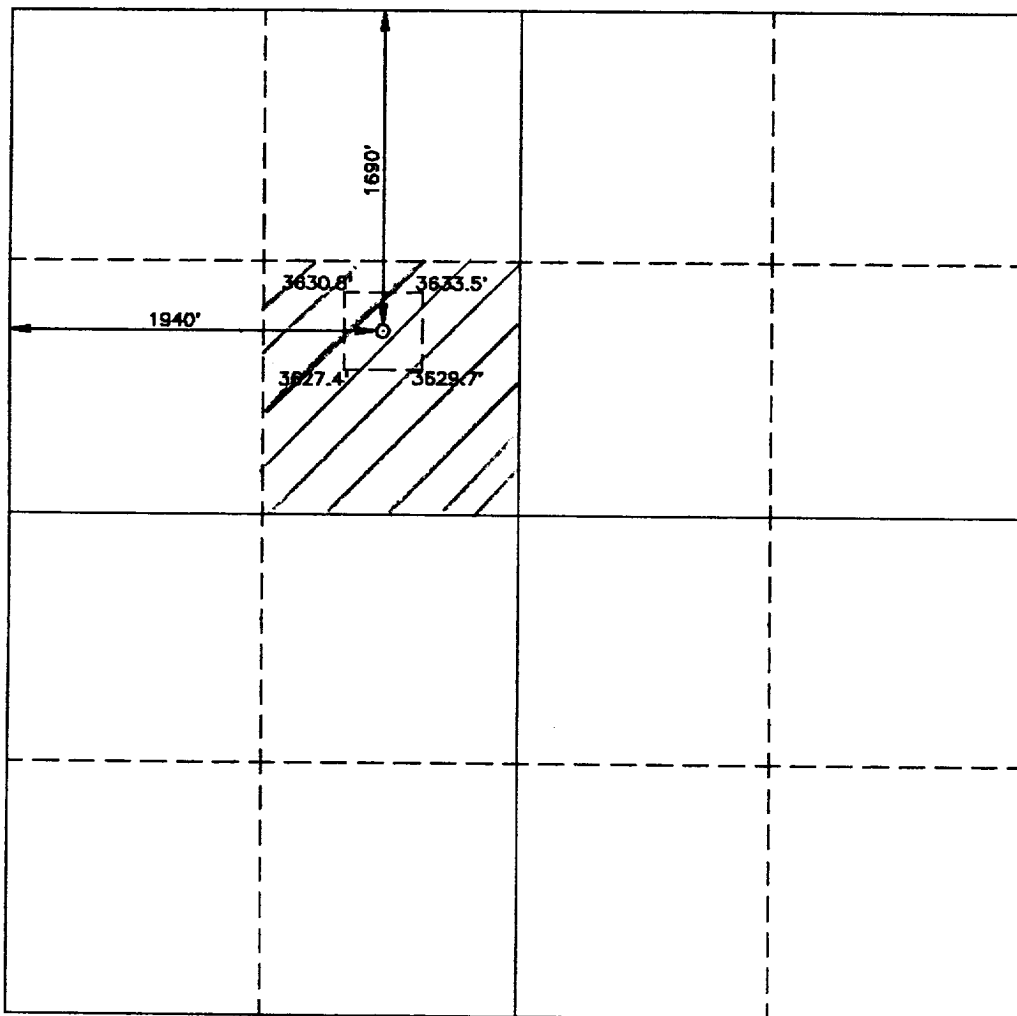
All Distances must be from the outer boundaries of the section

Operator DEVON ENERGY CORPORATION			Lease EAST SHUGART UNIT		Well No. 54
Unit Letter F	Section 34	Township 18 SOUTH	Range 31 EAST	County NMPM	EDDY
Actual Footage Location of Well: 1690 feet from the NORTH line and 1940 feet from the WEST line					
Ground Level Elev. 3630'	Producing Formation Queen Sand		Pool Shugart (Y-SR-Q-G)		Dedicated Acreage: 40 Acres

- Outline the acreage dedicated to the subject well by colored pencil or hatchure marks on the plat below.
- If more than one lease is dedicated to the well, outline each and identify the ownership thereof (both as to working interest and royalty).
- If more than one lease of different ownership is dedicated to the well, have the interest of all owners been consolidated by communitization, unitization, force-pooling, etc.?
☐ Yes ☐ No If answer is "yes" type of consolidation _____

If answer is "no" list of owners and tract descriptions which have actually been consolidated. (Use reverse side of this form necessary.)

No allowable will be assigned to the well unit all interests have been consolidated (by communitization, unitization, forced-pooling, otherwise) or until a non-standard unit, eliminating such interest, has been approved by the Division.



OPERATOR CERTIFICATION

I hereby certify the the information contained herein is true and complete to the best of my knowledge and belief.

Signature

E. L. Buttross Jr.

Printed Name

E. L. Buttross, Jr.

Position

District Engineer

Company Devon Energy

Corporation (Nevada)

Date

3/11/94

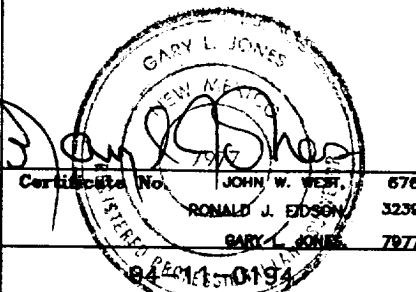
SURVEYOR CERTIFICATION

I hereby certify that the well location shown on this plat was plotted from field notes of actual surveys made by me or under my supervision, and that the same is true and correct to the best of my knowledge and belief.

Date Surveyed

JANUARY 28, 1994

Signature & Seal of
Professional Surveyor



MINIMUM BLOWOUT PREVENTER REQUIREMENTS

3,000 psi Working Pressure

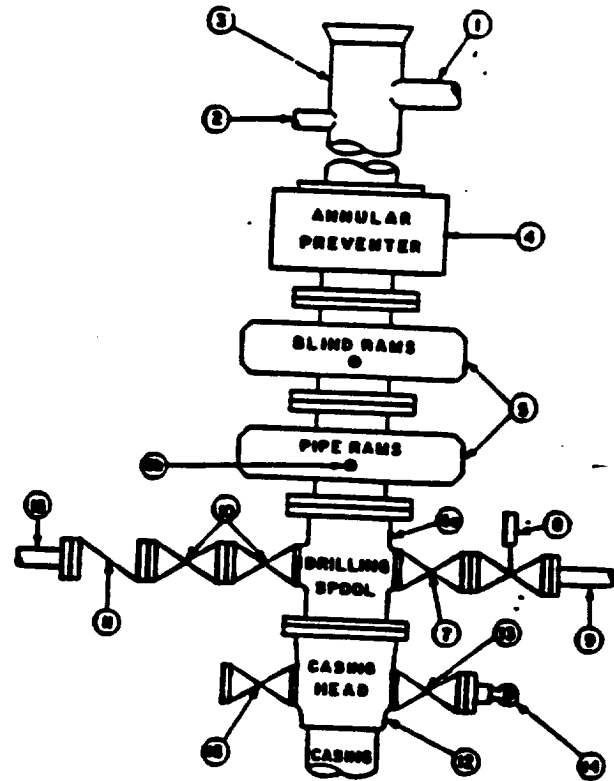
3 MWP

STACK REQUIREMENTS

No.	Item	Min. I.D.	Min. Nominal
1	Flowline		
2	Fill up line		2"
3	Drilling nipple		
4	Annular preventer		
5	Two single or one dual hydraulically operated rams		
6a	Drilling spool with 2" min. kill line and 3" min choke line outlets		
6b	2" min. kill line and 3" min. choke line outlets in ram. (Alternate to 6a above.)		
7	Valve Gate <input type="checkbox"/> Plug <input type="checkbox"/>	3-1/8"	
8	Gate valve—power operated	3-1/8"	
9	Line to choke manifold		3"
10	Valves Gate <input type="checkbox"/> Plug <input type="checkbox"/>	2-1/16"	
11	Check valve	2-1/16"	
12	Casing head		
13	Valve Gate <input type="checkbox"/> Plug <input type="checkbox"/>	1-13/16"	
14	Pressure gauge with needle valve		
15	Kill line to rig mud pump manifold		2"

OPTIONAL			
16	Flanged valve	1-13/16"	

CONFIGURATION 4



CONTRACTOR'S OPTION TO FURNISH:

1. All equipment and connections above bradenhead or casinghead. Working pressure of preventers to be 3,000 psi, minimum.
2. Automatic accumulator (80 gallon, minimum) capable of closing BOP in 30 seconds or less and, holding them closed against full rated working pressure.
3. BOP controls, to be located near drillers position.
4. Kelly equipped with Kelly cock.
5. Inside blowout preventer or its equivalent on derrick floor at all times with proper threads to fit pipe being used.
6. Kelly saver-sub equipped with rubber casing protector at all times.
7. Plug type blowout preventer tester.
8. Extra set pipe rams to fit drill pipe in use on location at all times.
9. Type RX ring gaskets in place of Type R.

MEC TO FURNISH:

1. Bradenhead or casinghead and side valves.
2. Wear bushing, if required.

GENERAL NOTES:

1. Deviations from this drawing may be made only with the express permission of MEC's Drilling Manager.
2. All connections, valves, fittings, piping, etc., subject to well or pump pressure must be flanged (suitable clamp connections acceptable) and have minimum working pressure equal to rated working pressure of preventers up through chokes. Valves must be full opening and suitable for high pressure mud service.
3. Controls to be of standard design and each marked, showing opening and closing position.
4. Chokes will be positioned so as not to hamper or delay changing of choke beams. Replaceable parts for adjustable chokes, other beam sizes, retainers, and choke wrenches to be conveniently located for immediate use.
5. All valves to be equipped with handwheels or handles ready for immediate use.
6. Choke lines must be suitably anchored.

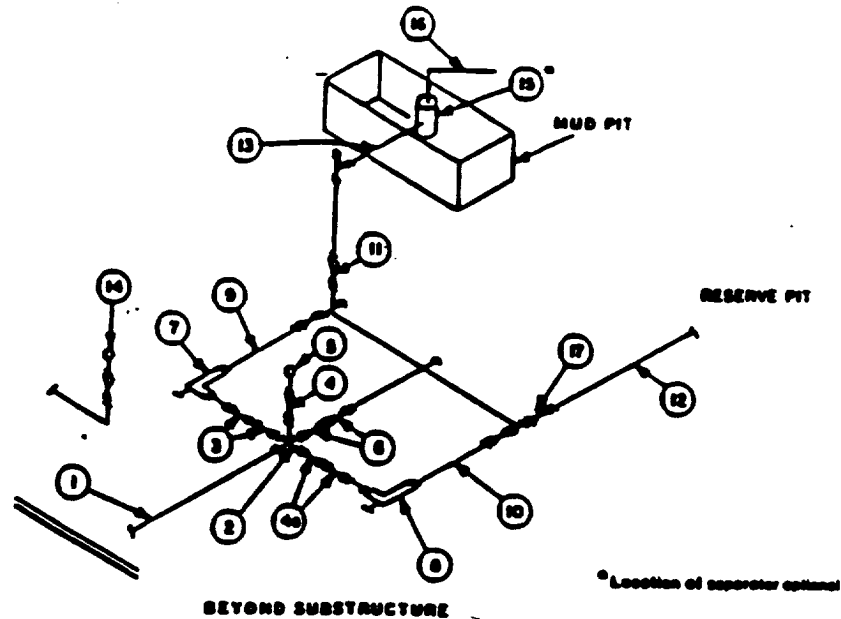
7. Handwheels and extensions to be connected and ready for use.
8. Valves adjacent to drilling spool to be kept open. Use outside valves except for emergency.
9. All seamless steel control piping (3000 psi working pressure) to have flexible joints to avoid stress. Hoses will be permitted.
10. Casinghead connections shall not be used except in case of emergency.
11. Do not use kill line for routine fill-up operations.

Attachment to Exhibit #1
NOTES REGARDING BLOWOUT PREVENTORS
East Shugart Unit #54
Eddy County, New Mexico

1. Drilling nipple will be constructed so it can be removed mechanically without the aid of a welder. The minimum internal diameter will equal BOP bore.
2. Wear ring will be properly installed in head.
3. Blowout preventor and all associated fittings will be in operable condition to withstand a minimum 3000 psi working pressure.
4. All fittings will be flanged.
5. A full bore safety valve tested to a minimum 3000 psi WP with proper thread connections will be available on the rotary rig floor at all times.
6. All choke lines will be anchored to prevent movement.
7. All BOP equipment will be equal to or larger in bore than the internal diameter of the last casing string.
8. Will maintain a kelly cock attached to the kelly.
9. Hand wheels and wrenches will be properly installed and tested for safe operation.
10. Hydraulic floor control for blowout preventor will be located as near in proximity to driller's controls as possible.
11. All BOP equipment will meet API standards and include a minimum 40 gallon accumulator having two independent means of power to initiate closing operation.

MINIMUM CHOKE MANIFOLD 3,000, 5,000 and 10,000 PSI Working Pressure

3 MWP - 5 MWP - 10 MWP



MINIMUM REQUIREMENTS										
No.		3,000 MWP			5,000 MWP			10,000 MWP		
		I.D.	NOMINAL	RATING	I.D.	NOMINAL	RATING	I.D.	NOMINAL	RATING
1	Line from drilling spool		3"	3,000		3"	5,000		3"	10,000
2	Cross 3"x3"x3"x2"			3,000			5,000			
	Cross 3"x3"x3"x3"									10,000
3	Valves (1) Gate □ Plug □(2)	3-1/8"		3,000	3-1/8"		5,000	3-1/8"		10,000
4	Valve Gate □ Plug □(2)	1-13/16"		3,000	1-13/16"		5,000	1-13/16"		10,000
4a	Valves (1)	2-1/16"		3,000	2-1/16"		5,000	3-1/8"		10,000
5	Pressure Gauge			3,000			5,000			10,000
6	Valves Gate □ Plug □(2)	3-1/8"		3,000	3-1/8"		5,000	3-1/8"		10,000
7	Adjustable Choke(3)	2"		3,000	2"		5,000	2"		10,000
8	Adjustable Choke	1"		3,000	1"		5,000	2"		10,000
9	Line		3"	3,000		3"	5,000		3"	10,000
10	Line		2"	3,000		2"	5,000		3"	10,000
11	Valves Gate □ Plug □(2)	3-1/8"		3,000	3-1/8"		5,000	3-1/8"		10,000
12	Lines		3"	1,000		3"	1,000		3"	2,000
13	Lines		3"	1,000		3"	1,000		3"	2,000
14	Remote reading compound standpipe pressure gauge			3,000			5,000			10,000
15	Gas Separator		2"x5'			2"x5'			2"x5'	
16	Line		4"	1,000		4"	1,000		4"	2,000
17	Valves Gate □ Plug □(2)	3-1/8"		3,000	3-1/8"		5,000	3-1/8"		10,000

(1) Only one required in Class 3M.

(2) Gate valves only shall be used for Class 10M.

(3) Remote operated hydraulic choke required on 5,000 psi and 10,000 psi for drilling.

EQUIPMENT SPECIFICATIONS AND INSTALLATION INSTRUCTIONS

- All connections in choke manifold shall be welded, studded, flanged or Cameron clamp of comparable rating.
- All flanges shall be API 6B or 6BX and ring gaskets shall be API RX or BX. Use only BX for 10 MWP.
- All lines shall be securely anchored.
- Chokes shall be equipped with tungsten carbide seats and needles, and replacements shall be available.
- Choke manifold pressure and standpipe pressure gauges shall be available at the choke manifold to assist in regulating chokes. As an alternate with automatic chokes, a choke manifold pressure gauge shall be located on the rig floor in conjunction with the standpipe pressure gauge.
- Line from drilling spool to choke manifold should be as straight as possible. Lines downstream from chokes shall make turns by large bends or 90° bends using ball plugged tees.
- Discharge lines from chokes, choke bypass and from top of gas separator should vent as far as practical from the well.