

OIL CONSERVATION DIVISION

P.O. Box 2088

Santa Fe, New Mexico 87504-2088

EXHIBITE

DISTRICT I
P.O. Box 1980, Hobbs, NM 88240

DISTRICT II
P.O. Drawer DD, Artesia, NM 88210

DISTRICT III
1000 Rio Brazos Rd., Aztec, NM 87410

WELL LOCATION AND ACREAGE DEDICATION PLAT

All Distances must be from the outer boundaries of the section

Operator Nearburg Producing Company			Lease Dagger Draw 31 Federal		Well No. 6
Unit Letter A	Section 31	Township 19 - South	Range 25 - East	County Eddy	
Actual Footage Location of Well: 660' feet from the North line and 660' feet from the East line					
Ground level Elev. 3529'	Producing Formation Cisco Canyon		Pool Dagger Draw North Upper Penn		Dedicated Acreage: 160 Acres

1. Outline the acreage dedicated to the subject well by colored pencil or hatchure marks on the plat below.

2. If more than one lease is dedicated to the well, outline each and identify the ownership thereof (both as to working interest and royalty).

3. If more than one lease of different ownership is dedicated to the well, have the interest of all owners been consolidated by communitization, unitization, force-pooling, etc.?

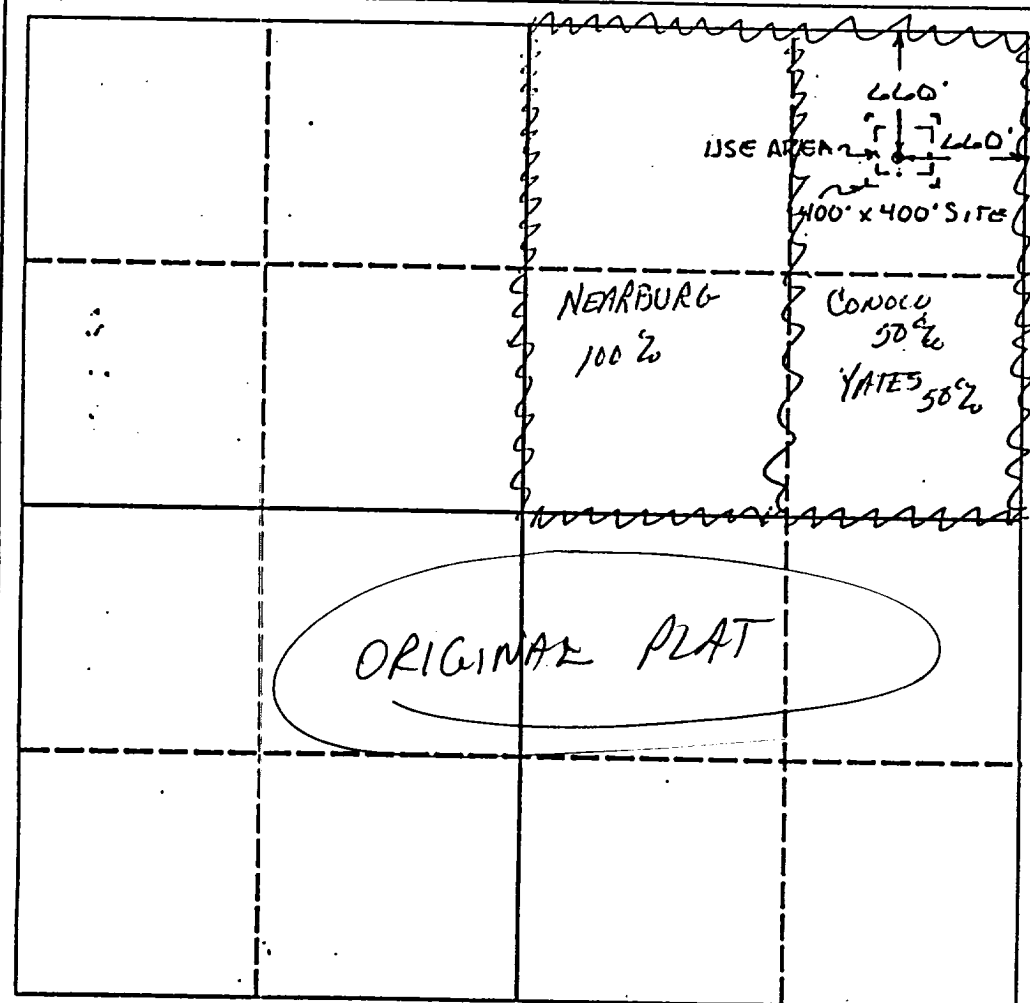
☒ Yes

☐ No

If answer is "yes" type of consolidation Communitization #NMNM85318

If answer is "no" list the owners and tract descriptions which have actually been consolidated. (Use reverse side of this form if necessary.)

No allowable will be assigned to the well until all interests have been consolidated (by communitization, unitization, forced-pooling, or otherwise) or until a non-standard unit, eliminating such interest, has been approved by the Division.



OPERATOR CERTIFICATION

I hereby certify that the information contained herein is true and complete to the best of my knowledge and belief.

Signature

Printed Name

H. R. Willis

Position

Drilling Supt.

Company

Nearburg Prod. Co.

Date

May 24, 1994

SURVEYOR CERTIFICATION

I hereby certify that the well location shown on this plat was plotted from field notes of actual surveys made by me or under my supervision, and that the same is true and correct to the best of my knowledge and belief.

Date Surveyed

1993

Signature of Professional Surveyor

2126

Certification