

NM OIL CONS. COMMISSION
DRAWER DDUND STATES
ART DEPARTMENT OF THE INTERIOR
BUREAU OF LAND MANAGEMENT

SUBMIT IN TRIPLICATE*
(Other instructions on reverse side)

Form approved.
Budget Bureau No. 1004-0136
Expires: December 31, 1991

APPLICATION FOR PERMIT TO DRILL OR DEEPEN

1A. TYPE OF WORK

DRILL ☒

DEEPEN ☐

B. TYPE OF WELL

OIL WELL ☒

GAS WELL ☐

OTHER ☐

SINGLE BORE ☐

MULTIPLE BORE ☐

2. NAME OF OPERATOR

Devon Energy Corporation (Nevada)

6137

3. ADDRESS AND TELEPHONE NO.

(405) 235-3611

20 N. Broadway, Suite 1500, Oklahoma City, OK 73102-8260

4. LOCATION OF WELL (Report location clearly and in accordance with any State requirements.)

At surface

990' FSL & 2600' FEL

(same) 2455'

NON-STANDARD LOCATION...

**SUBJECT TO
LIKE APPROVAL
BY STATE**

At proposed prod. zone

Unit (0)

14. DISTANCE IN MILES AND DIRECTION FROM NEAREST TOWN OR POST OFFICE*

15 1/2 miles southeast of Loco Hills, NM

15. DISTANCE FROM PROPOSED* LOCATION TO NEAREST PROPERTY OR LEASE LINE, FT.

1100'

16. NO. OF ACRES IN LEASE

400

17. NO. OF ACRES ASSIGNED TO THIS WELL

40

18. DISTANCE FROM PROPOSED LOCATION* TO NEAREST WELL, DRILLING, COMPLETED, OR APPLIED FOR, ON THIS LEASE, FT.

900'

19. PROPOSED DEPTH

4200'

20. ROTARY OR CABLE TOOLS

rotary

21. ELEVATIONS (Show whether DF, RT, GR, etc.)

GL 3632'

22. APPROX. DATE WORK WILL START*

10-01-94

23.

PROPOSED CASING AND CEMENTING PROGRAM

SIZE OF HOLE	GRADE SIZE OF CASING	WEIGHT PER FOOT	SETTING DEPTH	QUANTITY OF CEMENT
17 1/2"	14"		40'	cmt with readi-mix to surface
12 1/4"	8 5/8" J-55	24#	950'	300 sx Lite + 200 sx Class C
7 7/8"	5 1/2" J-55	15.5#	4200'	550 sx Lite + 500 sx Class C

We plan to circulate cement to surface on all casing strings.

Devon Energy proposes to drill to 4200' to test the Queen Sand formation for commercial quantities of oil. If the Queen is deemed noncommercial, the well bore will be plugged and abandoned per Federal regulations. Programs to adhere to onshore oil and gas regulations are outlined in the following exhibits and attachments.

Drilling Program

Surface Use and Operating Plan

Exhibits #1/1-A = Blowout Prevention Equipment

Exhibit #2 = Location and Elevation Plat

Exhibits #3/3-A = Road Map and Topo Map

Exhibit #4 = Wells Within 1 Mile Radius

Exhibits #5 = Production Facilities Plat

Exhibit #6 = Rotary Rig Layout

Exhibit #7 = Casing Design

H₂S Operating Plan

The undersigned accepts all applicable terms, conditions, stipulations and restrictions concerning operations conducted on the leased land or portions thereof, as described below.

Lease #: NM 10191

Legal Description: Section 35-T18S-R31E

Formation: Queen Sand

Bond Coverage: Nationwide

BLM Bond #: CO-1104

IN ABOVE SPACE DESCRIBE PROPOSED PROGRAM: If proposal is to deepen, give data on present productive zone and proposed new productive zone. If proposal is to drill or deepen directionally, give pertinent data on subsurface locations and measured and true vertical depths. Give blowout prevention program, if any.

24.

E.L. Buttross, Jr.

District Engineer

SIGNED

E.L. Buttross Jr.

TITLE

DATE

(This space for Federal or State office use)

PERMIT NO.

APPROVAL DATE

APPROVAL SUBJECT TO
GENERAL REQUIREMENTS AND
SPECIAL STIPULATIONS
ATTACHED

Application approval does not warrant or certify that the applicant holds legal or equitable title to those rights in the subject lease which would entitle the applicant to sue for damages thereon.

CONDITIONS OF APPROVAL, IF ANY:

APPROVED BY

H. Yolanda Vega

TITLE

Area Manager
AREA MANAGER

DATE

2/24/95

*See Instructions On Reverse Side

Title 18 U.S.C. Section 1001, makes it a crime for any person knowingly and willfully to make to any department or agency of the United States any false, fictitious or fraudulent statements or representations as to any matter within its jurisdiction.

UNITED STATES
DEPARTMENT OF THE INTERIOR
BUREAU OF LAND MANAGEMENT

FORM APPROVED

Budget Bureau No. 1004-0135
Expires March 31, 1993

SUNDRY NOTICES AND REPORTS ON WELLS

Do not use this form for proposals to drill or to deepen or reentry to a different reservoir.
Use "APPLICATION FOR PERMIT—" for such proposals

SUBMIT IN TRIPLICATE

1. Type of Well
☒ Oil Well ☐ Gas Well ☐ Other

2. Name of Operator
DEVON ENERGY CORPORATION (NEVADA)

3. Address and Telephone No.
20 NORTH BROADWAY, SUITE 1500, OKLAHOMA CITY, OKLAHOMA 73102 (405) 235-3611

4. Location of Well (Footage. Sec., T., R., M., or Survey Description)
510' FSL & 2455' FWL Sec. N-35-18S-31E

5. Lease Designation and Serial No.
NM10191

6. If Indian, Allottee or Tribe Name
N/A

7. If Unit or CA, Agreement Designation
14-08-001-11572

8. Well Name and No.
East Shugart Unit #74

9. API Well No.
30-015 - 28359

10. Field and Pool, or Exploratory Area
Shugart (Y-SR-Q-G)

11. County or Parish, State
Eddy, NM

CHECK APPROPRIATE BOX(s) TO INDICATE NATURE OF NOTICE, REPORT, OR OTHER DATA

TYPE OF SUBMISSION

TYPE OF ACTION

- ☐ Notice of Intent
- ☒ Subsequent Report
- ☐ Final Abandonment Notice

- ☐ Abandonment
- ☐ Recompletion
- ☐ Plugging Back
- ☐ Casing Repair
- ☐ Altering Casing
- ☐ Other Changed Location

- ☐ Change of Plans
- ☐ New Construction
- ☐ Non-Routine Fracturing
- ☐ Water Shut-Off
- ☐ Conversion to Injection
- ☐ Dispose Water

(Note: Report results of multiple completion on Well Completion or Recompletion Report and Log form.)

13. Describe Proposed or Completed Operations (Clearly state all pertinent details, and give pertinent dates, including estimated date of starting any proposed work. If well is directionally drilled, give subsurface locations and measured and true vertical depths for all markers and zones pertinent to this work.)*

Please be advised the ESU #74 location has been moved 125' south
from 635' FSL & 2455' FWL to 510' FSL & 2455' FWL. (See attached plat.)

The new location will be arched.

14. I hereby certify that the foregoing is true and correct

E. L. Buttross, Jr.

District Engineer

Date 12/30/94

Signed E. L. Buttross Jr.

Title

(This space for Federal or State office use)

Approved by _____
Conditions of approval, if any:

Title

Date

Submit in Appropriate
District Office
Use Lease - 4 copies
ac Lease - 3 copies

State of New Mexico
Energy, Minerals and Natural Resources Department

Form C-102
Revised 1-1-89

OIL CONSERVATION DIVISION

P.O. Box 2088

Santa Fe, New Mexico 87504-2088

DISTRICT I
P.O. Box 1980, Hobbs, NM 88240

DISTRICT II
P.O. Drawer DD, Artesia, NM 88210

DISTRICT III
P.O. Box 1980, Hobbs, NM 88240

WELL LOCATION AND ACREAGE DEDICATION PLAT
All Distances must be from the outer boundaries of the section

API # 30-015-28359

Operator Devon Energy Corporation			Lease East Shugart Unit		Well No. 74
Unit Letter N	Section 35	Township 18 south	Range 31 East	County NMNM	Eddy

Actual Footage Location of Well:

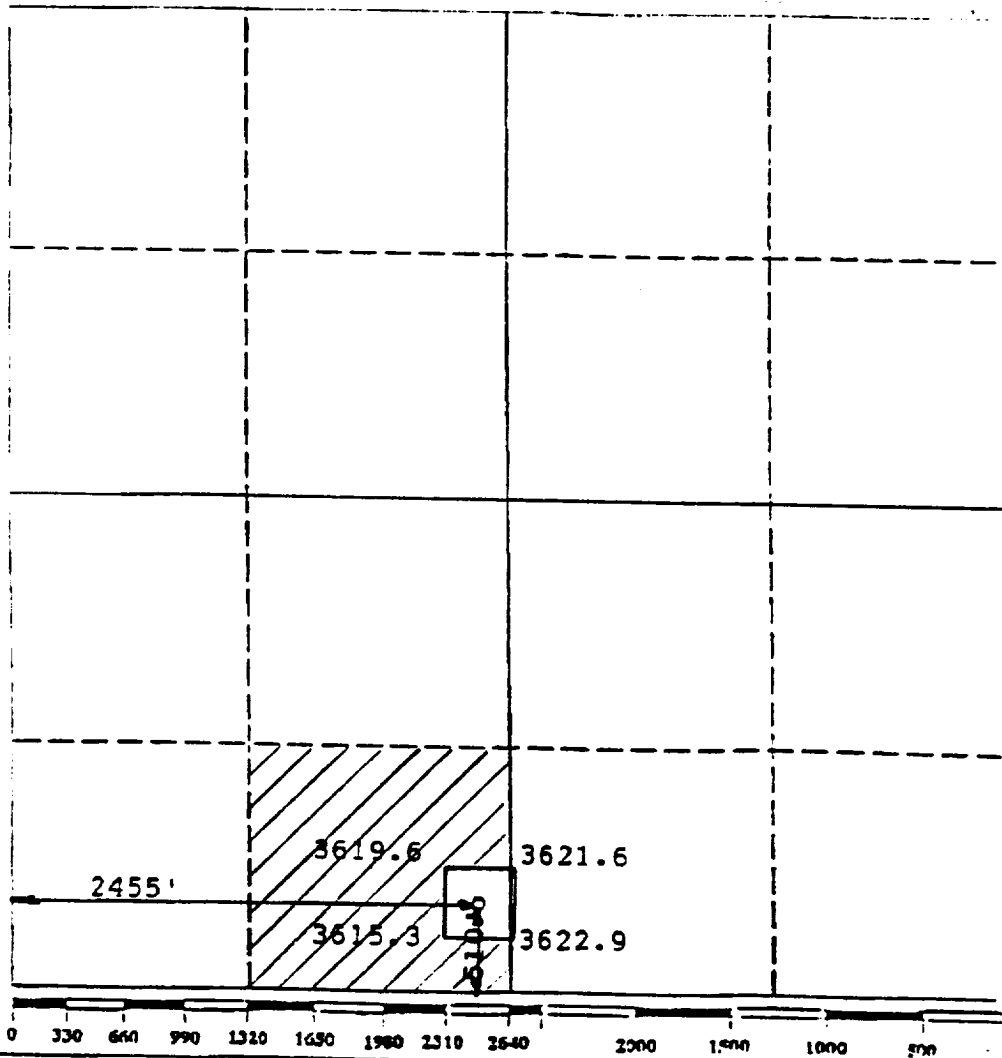
510 feet from the	South	line and	2455 feet from the	West	line
Ground level Elev. 3620	Producing Formation Yates - Queen		Pool Shugart; V. 7-Runs, G, G	Dedicated Acreage: 40 Acres	

- Outline the acreage dedicated to the subject well by colored pencil or hatchure marks on the plat below.
- If more than one lease is dedicated to the well, outline each and identify the ownership thereof (both as to working interest and royalty).
- If more than one lease of different ownership is dedicated to the well, have the interest of all owners been consolidated by communitization, unitization, force-pooling, etc.?

☐ Yes
 ☐ No

If answer is "yes" type of consolidation _____

 If answer is "no" list the owners and tract descriptions which have actually been consolidated. (Use reverse side of this form if necessary) _____
 No allowable will be assigned to the well until all interests have been consolidated (by communitization, unitization, force-pooling, or otherwise) or until a non-standard unit, eliminating such interests, has been approved by the Division.



OPERATOR CERTIFICATION

I hereby certify that the information contained herein is true and complete to the best of my knowledge and belief.

Signature

E. L. Buttross, Jr.

Printed Name

E. L. Buttross, Jr.

Position

District Engineer

Company

Devon Energy Corp. (Nevada)

Date

December 30, 1994

SURVEYOR CERTIFICATION

I hereby certify that the well location shown on this plat was plotted from field notes of actual surveys made by me or under my supervision, and that the same is true and correct to the best of my knowledge and belief.

Date Surveyed

November 3, 1994

Signature & Seal of Professional Surveyor

P. R. Patton

Certificate No.

8112

MINIMUM BLOWOUT PREVENTER REQUIREMENTS

3,000 psi Working Pressure

3 MWP

EAST SHUGART UNIT
Eddy County, New Mexico

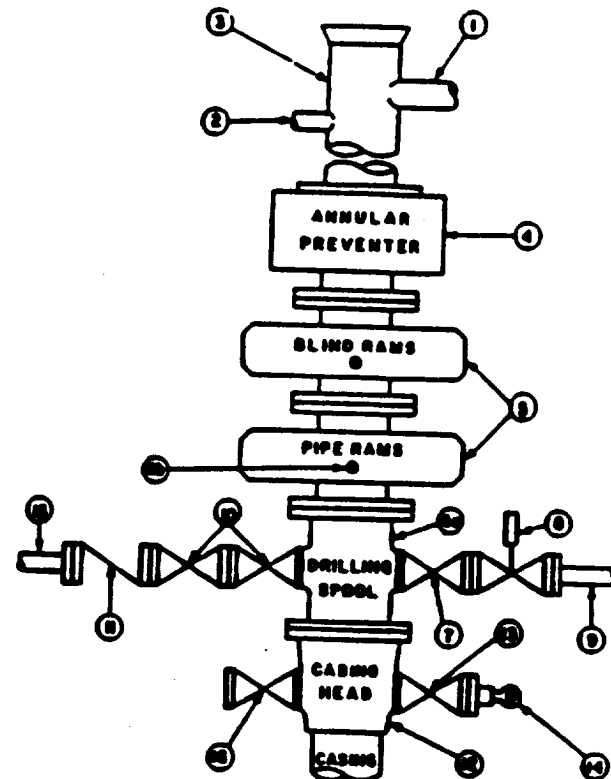
STACK REQUIREMENTS

No.	Item	Min. I.D.	Min. Nominal
1	Flowline		
2	Fill up line		2"
3	Drilling nipple		
4	Annular preventer		
5	Two single or one dual hydraulically operated rams		
6a	Drilling spool with 2" min. kill line and 3" min choke line outlets		
6b	2" min. kill line and 3" min. choke line outlets in ram. (Alternate to 6a above.)		
7	Valve Gate <input type="checkbox"/> Plug <input type="checkbox"/>	3-1/8"	
8	Gate valve—power operated	3-1/8"	
9	Line to choke manifold		3"
10	Valves Gate <input type="checkbox"/> Plug <input type="checkbox"/>	2-1/16"	
11	Check valve	2-1/16"	
12	Casing head		
13	Valve Gate <input type="checkbox"/> Plug <input type="checkbox"/>	1-13/16"	
14	Pressure gauge with needle valve		
15	Kill line to rig mud pump manifold		2"

OPTIONAL			
16	Flanged valve	1-13/16"	

EXHIBIT 1

CONFIGURATION A



CONTRACTOR'S OPTION TO FURNISH:

1. All equipment and connections above bradenhead or casinghead. Working pressure of preventers to be 3,000 psi minimum.
2. Automatic accumulator (80 gallon, minimum) capable of closing BOP in 30 seconds or less and, holding them closed against full rated working pressure.
3. BOP controls, to be located near driller's position.
4. Kelly equipped with Kelly cock.
5. Inside blowout preventer or its equivalent on derrick floor at all times with proper threads to fit pipe being used.
6. Kelly saver-sub equipped with rubber casing protector at all times.
7. Plug type blowout preventer tester.
8. Extra set pipe rams to fit drill pipe in use on location at all times.
9. Type FX ring gaskets in place of Type R.

MEC TO FURNISH:

1. Bradenhead or casinghead and side valves.
2. Wear bushing, if required.

GENERAL NOTES:

1. Deviations from this drawing may be made only with the express permission of MEC's Drilling Manager.
2. All connections, valves, fittings, piping, etc., subject to well or pump pressure must be flanged (suitable clamp connections acceptable) and have minimum working pressure equal to rated working pressure of preventers up through choke. Valves must be full opening and suitable for high pressure mud service.
3. Controls to be of standard design and each marked, showing opening and closing position.
4. Chokes will be positioned so as not to hamper or delay changing of choke beans. Replaceable parts for adjustable choke, other bean sizes, retainers, and choke wrenches to be conveniently located for immediate use.
5. All valves to be equipped with handwheels or handles ready for immediate use.
6. Choke lines must be suitably anchored.

7. Handwheels and extensions to be connected and ready for use.
8. Valves adjacent to drilling spool to be kept open. Use outside valves except for emergency.
9. All seamless steel control piping (3000 psi working pressure) to have flexible joints to avoid stress. Hoses will be permitted.
10. Casinghead connections shall not be used except in case of emergency.
11. Do not use kill line for routine fill-up operations.