

DISTRICT I
P.O. Box 1980, Hobbs, NM 88240

DISTRICT II
P.O. Drawer DD, Artesia, NM 88210

DISTRICT III
1000 Rio Brazos Rd., Aztec, NM 87410

State of New Mexico
Energy, Minerals and Natural Resources Department

Form C-102
Revised February 10, 1994
Instruction on back
Submit to Appropriate District Office
State Lease - 4 Copies
Fee Lease - 3 Copies

OIL CONSERVATION DIVISION

P.O. Box 2088
Santa Fe, New Mexico 87504-2088

☐ AMENDED REPORT

WELL LOCATION AND ACREAGE DEDICATION PLAT

API Number 30-015-28481	Pool Code 66352	Pool Name MORROW Eddy, Unders. Grp. 8
Property Code	Property Name TURKEY TRACK 2 STATE COM.	Well Number 1
OGRID No. 001801	Operator Name BASS ENTERPRISES PRODUCTION CO.	Elevation 3425

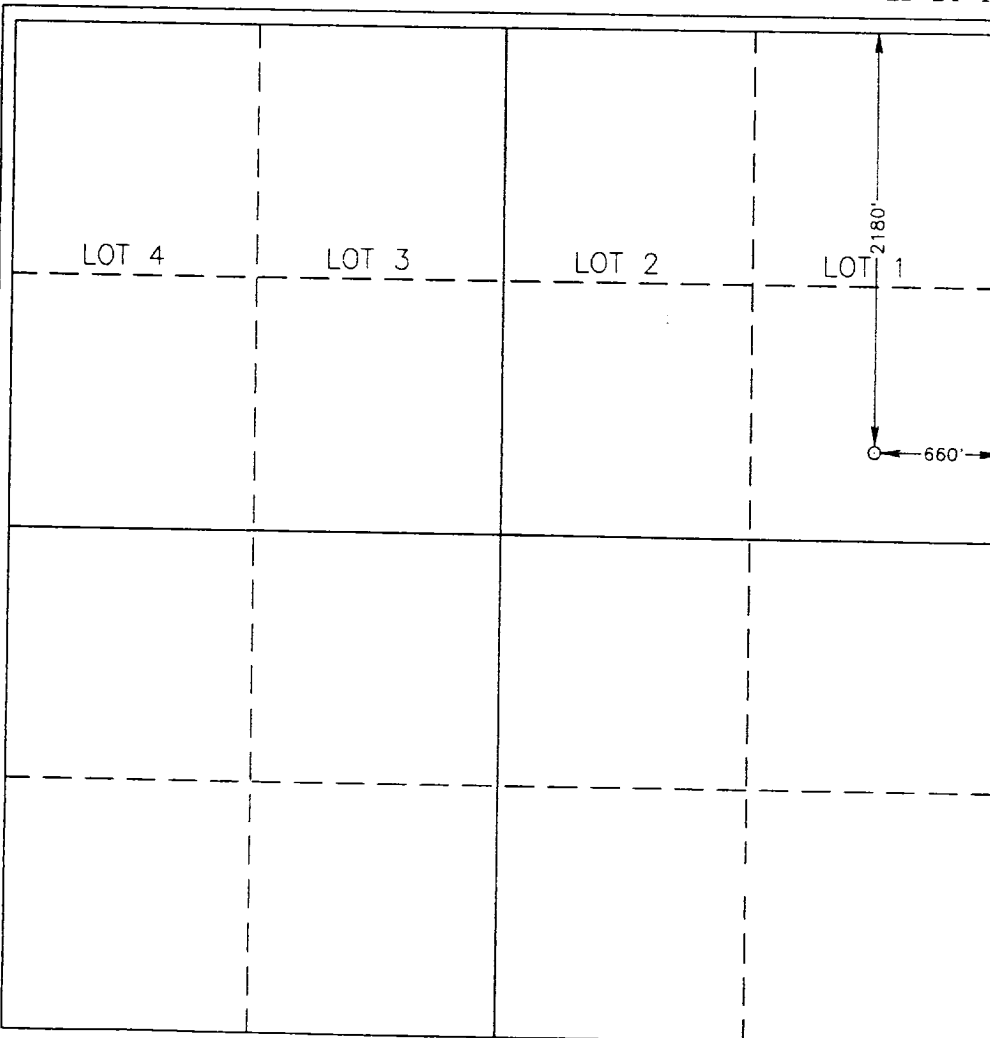
Surface Location

UL or lot No. H	Section 2	Township 19 S	Range 28 E	Lot Idn	Feet from the 2180	North/South line NORTH	Feet from the 660	East/West line EAST	County EDDY
---------------------------	---------------------	-------------------------	----------------------	---------	------------------------------	----------------------------------	-----------------------------	-------------------------------	-----------------------

Bottom Hole Location If Different From Surface

UL or lot No.	Section	Township	Range	Lot Idn	Feet from the	North/South line	Feet from the	East/West line	County
Dedicated Acres 32.0	Joint or Infill	Consolidation Code	Order No.						

NO ALLOWABLE WILL BE ASSIGNED TO THIS COMPLETION UNTIL ALL INTERESTS HAVE BEEN CONSOLIDATED
OR A NON-STANDARD UNIT HAS BEEN APPROVED BY THE DIVISION



OPERATOR CERTIFICATION

I hereby certify the the information
contained herein is true and complete to the
best of my knowledge and belief.

William R. Dannels
Signature

WILLIAM R. DANNELS
Printed Name

DIVISION DRILLING SUPT
Title

4/20/95
Date

SURVEYOR CERTIFICATION

I hereby certify that the well location shown
on this plat was plotted from field notes of
actual surveys made by me or under my
supervision, and that the same is true and
correct to the best of my belief.

APRIL 6, 1995

Date Surveyed **6 EIDSON** SJA

Signature & Seal of
Professional Surveyor

[Signature]
W.D. Num. 95-115509

Certified to No. JOHN W. WEST 676
THOMAS J. EIDSON 3239
CARL EIDSON 12641