

District I
PO Box 1980, Hobbs, NM 88241-1980
District II
PO Drawer DD, Artesia, NM 88211-0719
District III
1000 Rio Brazos Rd., Aztec, NM 87410
District IV
PO Box 2088, Santa Fe, NM 87504-2088

State of New Mexico
Energy, Minerals & Natural Resources Department

OIL CONSERVATION DIVISION
PO Box 2088
Santa Fe, NM 87504-2088

Form C-101
Revised February 10, 1994
Instructions on back
Submit to Appropriate District Office
State Lease - 6 Copies
Fee Lease - 5 Copies

☐ AMENDED REPORT

APPLICATION FOR PERMIT TO DRILL, RE-ENTER, DEEPEN, PLUGBACK, OR ADD A ZONE

Operator Name and Address. YATES PETROLEUM CORPORATION 105 South Fourth Street Artesia, New Mexico 88210		OGRID Number 025575
		API Number 30-015-28629
Property Code 16482	Property Name Aparejo APA St. Com.	Well No. 5

7 Surface Location

UL or lot no.	Section	Township	Range	Lot Idn	Feet from the	North/South line	Feet from the	East/West line	County
C	16	19S	25E		660	North	1980	West	Eddy

8 Proposed Bottom Hole Location If Different From Surface

UL or lot no.	Section	Township	Range	Lot Idn	Feet from the	North/South line	Feet from the	East/West line	County
Proposed Pool 1 Bogd Morrow					Proposed Pool 2 72840				

Work Type Code N	Well Type Code G	Cable/Rotary Rotary	Lease Type Code S	Ground Level Elevation 3510
Multiple No	Proposed Depth 9500'	Formation Morrow	Contractor Not Determined	Spud Date ASAP

21 Proposed Casing and Cement Program

Hole Size	Casing Size	Casing weight/foot	Setting Depth	Sacks of Cement	Estimated TOC
14 3/4"	9 5/8"	36# J-55	1150	1400 sx	Circulated
8 3/4"	7"	23# & 26#	TD	1350 sx	Port ID-1
		J-55 & N-80			10-13-95
					New Loc & API

22 Describe the proposed program. If this application is to DEEPEN or PLUG BACK give the data on the present productive zone and proposed new productive zone. Describe the blowout prevention program, if any. Use additional sheets if necessary.

Yates Petroleum Corporation wishes to drill and test the Morrow and all intermediate formations. Approximately 1150' of surface casing will be set and cement circulated to shut off gravel and cavings. If commercial, production casing will be run and cemented, will perforate and stimulate as needed for production.

MUD PROGRAM: FW Gel, Paper, LCM to 1150' FW to 5000'; Cut Brine to 7200'; Cut Brine, Starch to TD.

BOP PROGRAM: BOP's and hydral will be installed on the 9 5/8" casing and tested daily.

23 I hereby certify that the information given above is true and complete to the best of my knowledge and belief.

Signature:

Printed name: Ken Beardemphl

Title: Landman

Date: 10-09-95

Phone: 505-748-1471

OIL CONSERVATION DIVISION

Approved by:

ORIGINAL SIGNED BY TIM W. GUN

Title: DISTRICT II SUPERVISOR

Approval Date: 10/10/95

Expiration Date: 7/1/96

Conditions of Approval:

Attached ☐

time to witness cementing

the 9 5/8" casing

District I
PO Box 1980, Hobbs, NM 88240-1980
District II
PO Drawer DD, Artesia, NM 88211-0719
District III
1000 Rio Bravo Rd., Aztec, NM 87410
District IV
PO Box 2088, Santa Fe, NM 87504-2088

State of New Mexico
Energy, Minerals & Natural Resources Department

OIL CONSERVATION DIVISION
PO Box 2088
Santa Fe, NM 87504-2088

Form C-102
Revised February 10, 1994
Instructions on back
Submit to Appropriate District Office
State Lease - 4 Copies
Fee Lease - 3 Copies

☐ AMENDED REPORT

WELL LOCATION AND ACREAGE DEDICATION PLAT

1 API Number 30-015-28629	2 Pool Code 72840	3 Pool Name Boyd, Morrow
4 Property Code	5 Property Name APAREJO APA STATE COM	6 Well Number 5
7 OGRID No. 025575	8 Operator Name YATES PETROLEUM CORPORATION	9 Elevation 3510.

10 Surface Location

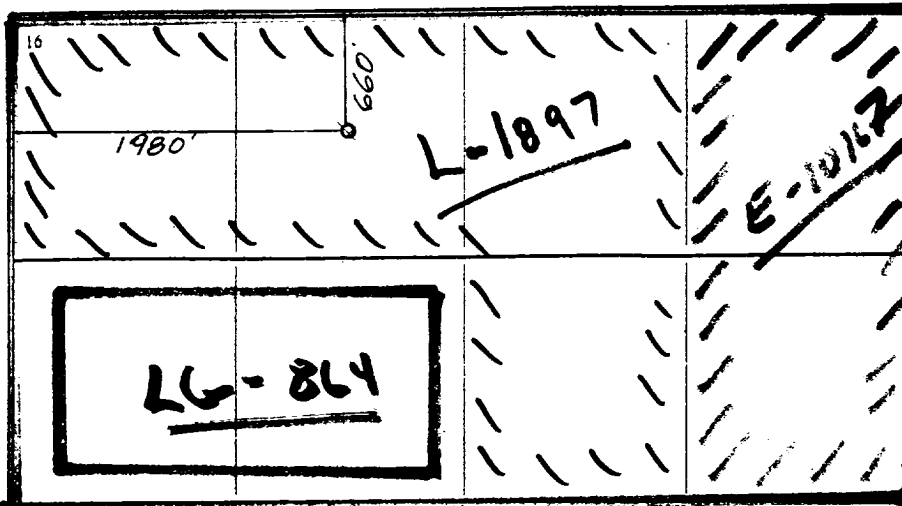
UL or lot no.	Section	Township	Range	Lot Idn	Feet from the	North/South line	Feet from the	East/West line	County
C	16	19S	25E		660	NORTH	1980	WEST	EDDY

11 Bottom Hole Location If Different From Surface

UL or lot no.	Section	Township	Range	Lot Idn	Feet from the	North/South line	Feet from the	East/West line	County

12 Dedicated Acres 320	13 Joint or Infill	14 Consolidation Code	15 Order No.
---------------------------	--------------------	-----------------------	--------------

NO ALLOWABLE WELL BE ASSIGNED TO THIS COMPLETION UNTIL ALL INTERESTS HAVE BEEN CONSOLIDATED
OR A NON-STANDARD UNIT HAS BEEN APPROVED BY THE DIVISION



17 OPERATOR CERTIFICATION

I hereby certify that the information contained herein is true and complete to the best of my knowledge and belief.

Signature: Ken Beardemphl
Printed Name: Ken Beardemphl
Title: Landman
Date: 10-09-95

18 SURVEYOR CERTIFICATION

I hereby certify that the well location shown on this plat was plotted from field notes of actual surveys made by me or under my supervision, and that the same is true and correct to the best of my belief.

OCTOBER 9, 1995
Date of Survey: OCTOBER 9, 1995
Signature and Seal of Registered Professional Engineer: DAN R. REDDY
5412
REGISTERED LAND SURVEYOR
NEW MEXICO
Certificate Number: 5412
NM REGD. NO. 5412

YATES PETROLEUM CORPORATION

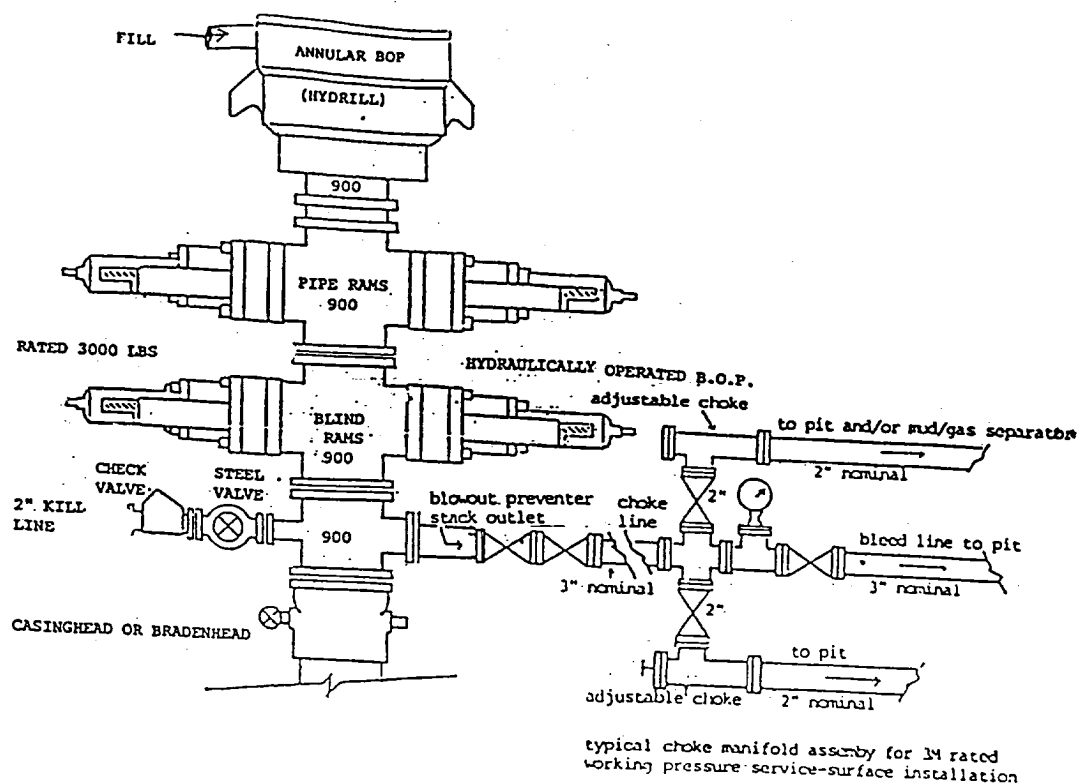


EXHIBIT B

THE FOLLOWING CONSTITUTES THE MINIMUM BLOWOUT PREVENTER
REQUIREMENTS FOR 3000 PSI WP SYSTEMS

1. All preventers to be hydraulically operated with secondary manual controls installed prior to drilling out from under casing.
2. Choke outlet to be a minimum of 3" diameter.
3. Kill line to be of all steel construction of 3" minimum diameter.
4. All connections from operating manifolds to preventers to be all steel. Hole or tube to be a minimum of one inch in diameter.
5. The available closing pressure shall be at least 15% in excess of that required with sufficient volume to operate the B.O.P.'s.
6. All connections to and from preventer to have a pressure rating equivalent to that of the B.O.P.'s.
7. Inside blowout preventer to be available on rig floor.
8. Operating controls to be located a safe distance from the rig floor.
9. Hole must be kept filled on trips below intermediate casing.