

District I
PO Box 1980, Hobbs, NM 88241-1980
District II
PO Drawer DD, Artesia, NM 88211-0719
District III
1000 Rio Brazos Rd., Aztec, NM 87410
District IV
PO Box 2088, Santa Fe, NM 87504-2088

State of New Mexico
Energy, Minerals & Natural Resources Department

OIL CONSERVATION DIVISION
PO Box 2088
Santa Fe, NM 87504-2088

Form C-101
Revised February 10, 1994
Instructions on back
Submit to Appropriate District Office
State Lease - 6 Copies
Fee Lease - 5 Copies

☐ AMENDED REPORT

APPLICATION FOR PERMIT TO DRILL, RE-ENTER, DEEPEN, PLUGBACK, OR ADD A ZONE

Operator Name and Address. MARALO, INC. P. O. BOX 832 MIDLAND, TX 79702		RECEIVED NOV 03 1995	OGRID Number 014007	
Property Name MILLMAN "11" STATE OIL CON. DIV.			API Number 30-015-28712	
Property Code 017925	Well No. 2			

7 Surface Location

UL or lot no.	Section	Township	Range	Lot Idn	Feet from the	North/South line	Feet from the	East/West line	County
I	11	19S	28E		2310	SOUTH	910	EAST	EDDY

8 Proposed Bottom Hole Location If Different From Surface

UL or lot no.	Section	Township	Range	Lot Idn	Feet from the	North/South line	Feet from the	East/West line	County
Proposed Pool 1 Millman (Qu-56-SA), East					Proposed Pool 2				

Work Type Code N	Well Type Code 0	Cable/Rotary C	Lease Type Code S	Ground Level Elevation 3421
Multiple N	Proposed Depth 2900'	Formation GRAYBURG/SAN ANDRES	Contractor UNK.	Spud Date 12/01/95

21 Proposed Casing and Cement Program

Hole Size	Casing Size	Casing weight/foot	Setting Depth	Sacks of Cement	Estimated TOC
12-1/4"	8-5/8"	24#	400' ±	300 CL. "C"	CIRC TO SURF.
7-7/8"	5-1/2"	15.3#	2900' ±	COVER PROSPECTIVE ZONES	UNK. TIE BACK
Post RD-1 11-10-95 New Log & RPE					

Describe the proposed program. If this application is to DEEPEN or PLUG BACK give the data on the present productive zone and proposed new productive zone. Describe the blowout prevention program, if any. Use additional sheets if necessary.

1. DRILL RAT HOLE & MOUSE HOLE & SURFACE STARTING HOLE 40'. LINE RESERVE PITS.
2. MIRU DRLG RIG. NOTIFY NMOC D OF INTENT TO SPUD. DRILL 12-1/4" HOLE TO ±400'. NOTIFY NMOC D. RU & RUN ± 400' 8-5/8" CSG. CENT W/300 SXS CL. "C" CENT W/2% CACL₂. CIRC CENT TO SURF. WOC 4 HRS BEFORE CUTTING OFF CSG. CUT OFF CSG & WELD ON BRADENHEAD. NU & TEST BOP. WOC 12 HRS. BEFORE DRILLING OUT SURFACE CASING.
3. DRILL 7-7/8" HOLE TO ±2900'. RUN DST. LOG & EVALUATE HOLE. RU & RUN ±2900' 5-1/2" 15.5# K-55 CSG. CENT TO TIE BACK INTO 8-5/8" CSG.
4. RD DRILLING RIG & CLEAN LOCATION. COMPLETION TO FOLLOW.

I hereby certify that the information given above is true and complete to the best of my knowledge and belief.

Signature: Dorothea Logan
Printed name: **DOROTHEA LOGAN**
Title: **REGULATORY ANALYST**
Date: **NOVEMBER 2, 1995** Phone: **(915) 684-7441**

OIL CONSERVATION DIVISION

Approved by:

ORIGINAL SIGNED BY TIM W. GUM
DISTRICT II SUPERVISOR

Approval Date:

11-6-95

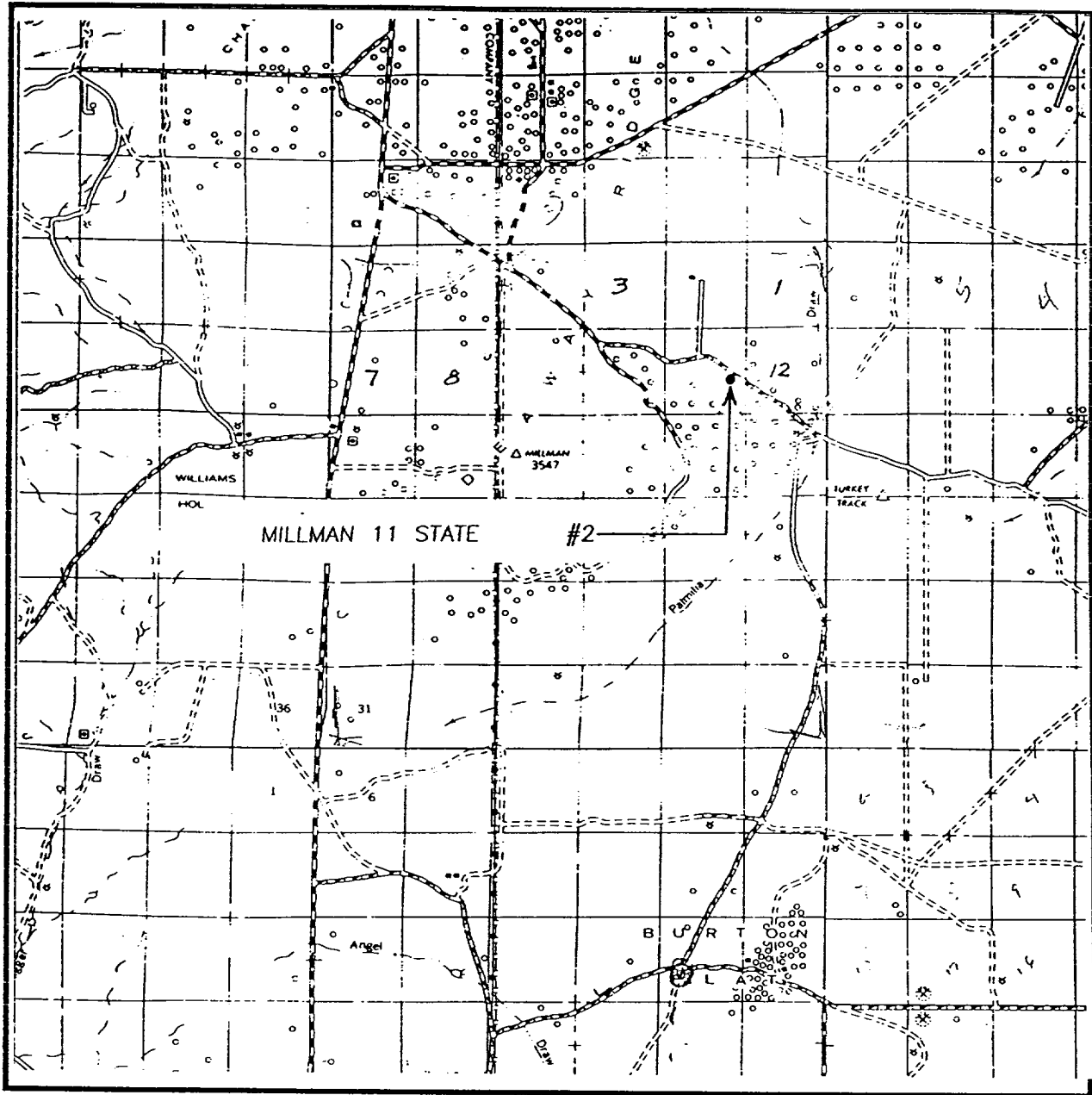
Expiration Date:

5-6-96

Conditions of Approval:

Attached ☐

VICINITY MAP



SCALE: 1" = 2 MILES

SEC. 11 TWP. 19-S RGE. 28-E

SURVEY N.M.P.M.

COUNTY EDDY

DESCRIPTION 2310' FSL & 910' FEL

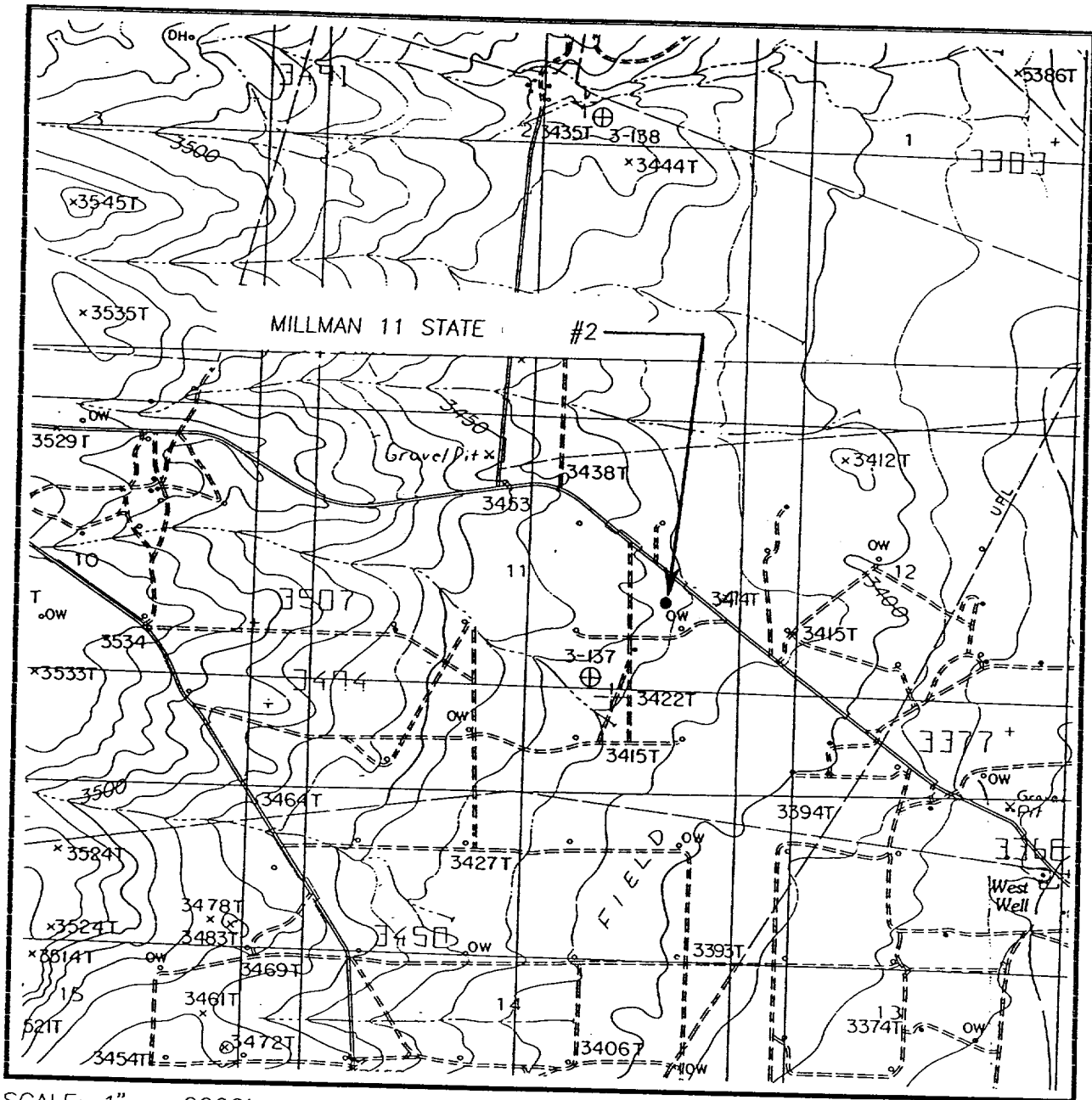
ELEVATION 3421

OPERATOR MARALO INC.

LEASE MILLMAN 11 STATE

JOHN WEST ENGINEERING
HOBBS, NEW MEXICO
(505) 393-3117

LOCATION VERIFICATION MAP



SCALE: 1" = 2000'

CONTOUR INTERVAL - 10'
W.5'S.1.

SEC. 11 TWP. 19-S RGE. 28-E

SURVEY N.M.P.M.

COUNTY EDDY

DESCRIPTION 2310' FSL & 910' FEL

ELEVATION 3421

OPERATOR MARALO INC.

LEASE MILLMAN 11 STATE

U.S.G.S. TOPOGRAPHIC MAP

ILLINOIS CAMP, N.M.

JOHN WEST ENGINEERING
HOBBS, NEW MEXICO

(505) 393-3117

Form C-102
Revised February 10, 1994
Submit to Appropriate District Office
State Lease - 4 Copies
Fee Lease - 3 Copies

				<p>OPERATOR CERTIFICATION</p> <p><i>I hereby certify the the information contained herein is true and complete to the best of my knowledge and belief.</i></p> <p><u><i>Dorothea Logan</i></u> Signature</p> <p>DOROTHEA LOGAN Printed Name</p> <p>REGULATORY ANALYST Title</p> <p>NOVEMBER 1, 1995 Date</p>	
				<p>SURVEYOR CERTIFICATION</p> <p><i>I hereby certify that the well location shown on this plat was plotted from field notes of actual surveys made by me or under my supervision, and that the same is true and correct to the best of my belief.</i></p> <p>SEPTEMBER 29, 1995 Date Surveyed</p> <p><u><i>Ronald F. Eidson</i></u> Signature & Seal of Professional Surveyor</p> <p>10-05-95 W.O. Num. 95-117-498</p>	
				<p>Certificate No. JOHN WEST 676 RONALD F. EIDSON 3239 PROFESSIONAL SURVEYOR 12641</p>	