

DISTRICT I  
P.O. Box 1980, Hobbs, NM 88240

State of New Mexico

Energy, Minerals and Natural Resources Department

Form C-102

Revised February 10, 1994

Instruction on back

Submit to Appropriate District Office

State Lease - 4 Copies

Fee Lease - 3 Copies

DISTRICT II  
P.O. Drawer DD, Artesia, NM 88210

DISTRICT III  
1000 Rio Brazos Rd., Aztec, NM 87410

# OIL CONSERVATION DIVISION

P.O. Box 2088

Santa Fe, New Mexico 87504-2088

☐ AMENDED REPORT

## WELL LOCATION AND ACREAGE DEDICATION PLAT

API Number 30-015-28803	Pool Code 087600	Pool Name Winchester Morrow
Property Code 017878	Property Name DWU Federal.	Well Number 6
OGRID No. 16696	Operator Name OXY USA INC	Elevation 3303'

### Surface Location

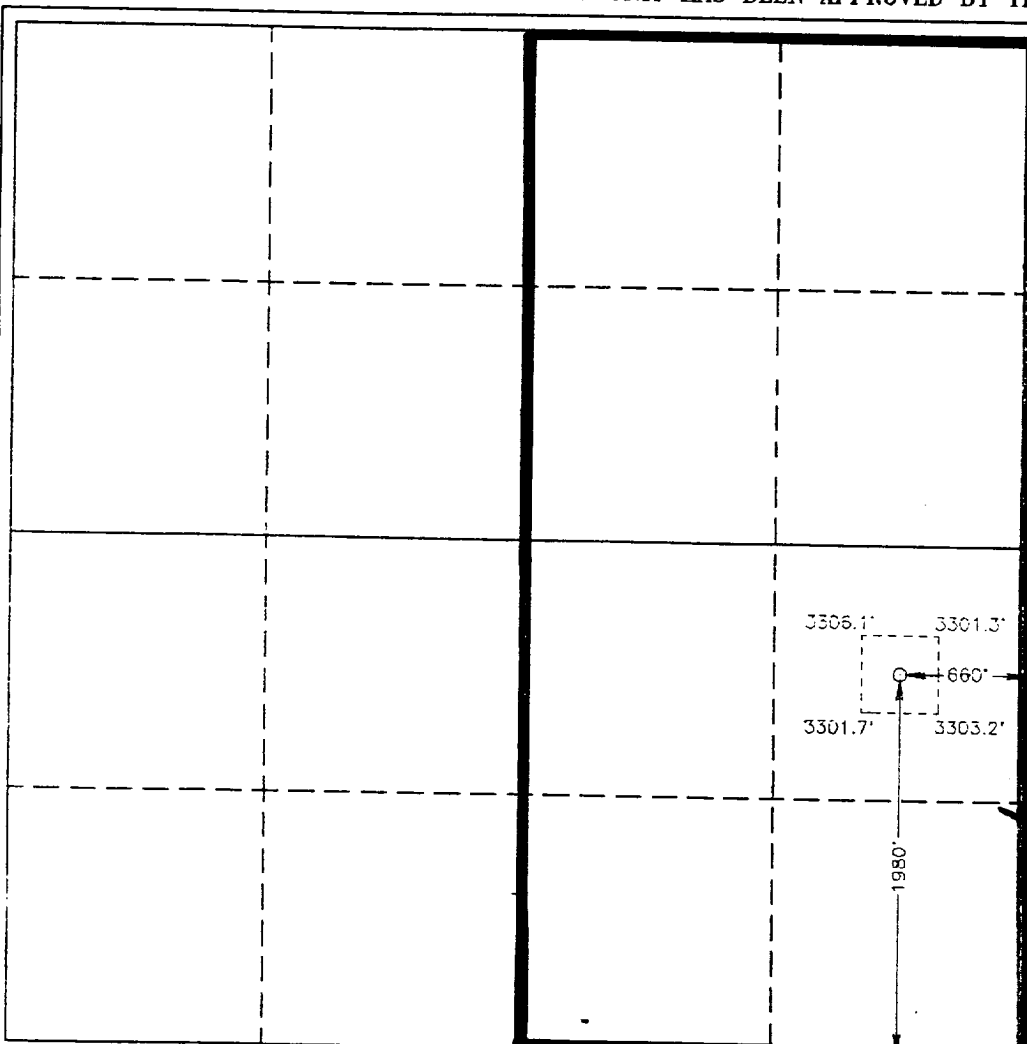
UL or lot No. 1	Section 34	Township 19 S	Range 28 E	Lot Idn	Feet from the 1980	North/South line South	Feet from the 660	East/West line East	County Eddy
--------------------	---------------	------------------	---------------	---------	-----------------------	---------------------------	----------------------	------------------------	----------------

### Bottom Hole Location If Different From Surface

UL or lot No.	Section	Township	Range	Lot Idn	Feet from the	North/South line	Feet from the	East/West line	County
---------------	---------	----------	-------	---------	---------------	------------------	---------------	----------------	--------

Dedicated Acres 320	Joint or Infill	Consolidation Code	Order No.
------------------------	-----------------	--------------------	-----------

NO ALLOWABLE WILL BE ASSIGNED TO THIS COMPLETION UNTIL ALL INTERESTS HAVE BEEN CONSOLIDATED  
OR A NON-STANDARD UNIT HAS BEEN APPROVED BY THE DIVISION



### OPERATOR CERTIFICATION

I hereby certify the the information  
contained herein is true and complete to the  
best of my knowledge and belief.

*David Stewart*  
Signature

David Stewart  
Printed Name

Regulatory Analyst  
Title

12/22/95  
Date

### SURVEYOR CERTIFICATION

I hereby certify that the well location shown  
on this plat was plotted from field notes of  
actual surveys made by me or under my  
supervision, and that the same is true and  
correct to the best of my belief.

November 27, 1995  
Date Surveyed

Signature & Seal of  
Professional Surveyor

*Gary L. Jones*  
Signature

W.Q. No. 54136

Certificate No. Gary L. Jones 7977

BASIN SURVEYS