

UNITED STATES  
DEPARTMENT OF THE INTERIOR  
BUREAU OF LAND MANAGEMENT

## APPLICATION FOR PERMIT TO DRILL OR DEEPEN

## 1a. TYPE OF WORK

DRILL ☒DEEPEN ☐

## b. TYPE OF WELL

OIL  
WELL ☒GAS  
WELL ☐OTHER ☐SINGLE  
ZONE ☒MULTIPLE  
ZONE ☐

## 2. NAME OF OPERATOR

CONOCO, INC.

(915) 686-6548

## 3. ADDRESS AND TELEPHONE NO.

10 Besta Dr. Ste 100W, Midland, TX 79705

## 4. LOCATION OF WELL (Report location clearly and in accordance with any State requirements.)

At surface

1980' FSL &amp; 1980' FEL

At proposed prod. zone

1980' FSL &amp; 1980' FEL

## 14. DISTANCE IN MILES AND DIRECTION FROM NEAREST TOWN OR POST OFFICE

Unit 3

## 15. DISTANCE FROM PROPOSED

LOCATION TO NEAREST  
PROPERTY OR LEASE LINE, FT.  
(Also to nearest drilg. unit line, if any)

## 16. NO. OF ACRES IN LEASE

17. NO. OF ACRES ASSIGNED  
TO THIS WELL

320

18. DISTANCE FROM PROPOSED LOCATION  
TO NEAREST WELL, DRILLING, COMPLETED,  
OR APPLIED FOR, ON THIS LEASE, FT.

## 19. PROPOSED DEPTH

8100'

## 20. ROTARY OR CABLE TOOLS

Rotary

## 21. ELEVATIONS (Show whether DP, RT, GR, etc.)

3880'

## 22. APPROX. DATE WORK WILL START

9/1/96

## 23.

## PROPOSED CASING AND CEMENTING PROGRAM

| SIZE OF HOLE | GRADE SIZE OF CASING | WEIGHT PER FOOT | SETTING DEPTH | QUANTITY OF CEMENT           |
|--------------|----------------------|-----------------|---------------|------------------------------|
| 14-3/4" HOLE | K-55 9 5/8"          | 36#             | 1200'         | 1300 SXS <b>CIRCULATE</b>    |
| 8-3/4"       | K-55 7"              | 26#             | 8100'         | 1380 SXS - <b>SEE STIPS.</b> |

It is proposed to drill this wellbore as a vertical Cisco producer according to the drilling plan outlined in the following attachments:

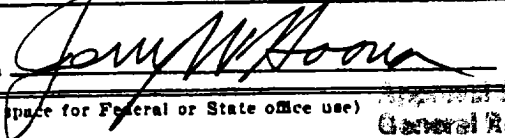
1. Well Location & Acreage Dedication Plat (C-102)
2. Proposed Well Plan Outline
3. Cementing Program
4. Surface Use Plan
5. EXHIBIT A - Vicinity Map
6. EXHIBIT B - Topo & Lease Road Map
7. EXHIBIT C.1 thru C.3 - Road, Pipeline, & Powerline Plats
8. EXHIBIT D - Standard Rig Layout
9. BOP and Choke Manifold Specifications (2 diagrams)
10. H2S Drilling Operations Plan & Diagram

An archeological survey will be ordered for this location and forwarded when completed. The undersigned accepts all applicable terms, conditions, stipulations, and restrictions concerning operations conducted on the leased land or portion thereof, as described above and as covered by BLM Bond File No. ES-0085.

IN ABOVE SPACE DESCRIBE PROPOSED PROGRAM: If proposal is to deepen, give data on present productive zone and proposed new productive zone. If proposal is to drill or deepen directionally, give pertinent data on subsurface locations and measured and true vertical depths. Give blowout preventer program, if any.

## 24.

SIGNED



TITLE

Sr. Conservation Coordinator

DATE 7/24/96

(This space for Federal or State office use)

PERMIT NO.

APPROVAL DATE

Application approval does not warrant or certify that the applicant holds legal or equitable title to those rights in the subject lease which would entitle the applicant to conduct operations thereon.

CONDITIONS OF APPROVAL, IF ANY:

APPROVED BY (ORIG. SGD.) RICHARD L. MANUS

TITLE

Area Manager

DATE

AUG 26 1996

\*See Instructions On Reverse Side

Title 18 U.S.C. Section 1001, makes it a crime for any person knowingly and willfully to make to any department or agency of the United States any false, fictitious or fraudulent statements or representations as to any matter within its jurisdiction.

District I  
PO Box 1980, Hobbs, NM 88241-1980  
District II  
PO Drawer DD, Artesia, NM 88211-0719  
District III  
1000 Rio Brazos Rd., Aztec, NM 87410  
District IV  
PO Box 2088, Santa Fe, NM 87504-2088

State of New Mexico  
Energy, Minerals & Natural Resources Department  
**OIL CONSERVATION DIVISION**  
PO Box 2088  
Santa Fe, NM 87504-2088

Form C-102  
Revised February 21, 1994  
Instructions on back  
Submit to Appropriate District Office  
State Lease - 4 Copies  
Fee Lease - 3 Copies

☐ AMENDED REPORT

**WELL LOCATION AND ACREAGE DEDICATION PLAT**

|                              |                                   |                     |  |
|------------------------------|-----------------------------------|---------------------|--|
| *API Number<br>30-015- 29135 |                                   | *Pool Code<br>15475 | *Pool Name<br>South Dagger Draw Upper Penn |
| *Property Code<br>003073     | *Property Name<br>PRESTON FEDERAL |                     | *Well Number<br>17                         |
| *OGRID No.<br>005073         | *Operator Name<br>CONOCO INC.     |                     | *Elevation<br>3660'                        |

<sup>10</sup> Surface Location

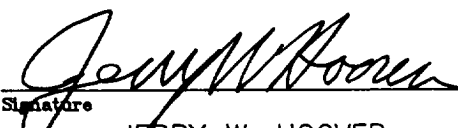
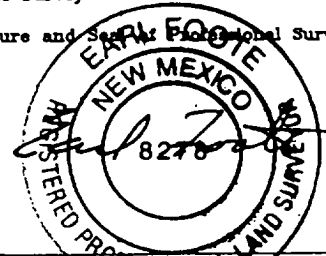
| UL or lot no. | Section | Township | Range | Lot Idn | Feet from the | North/South line | Feet from the | East/West line | County |
|---------------|---------|----------|-------|---------|---------------|------------------|---------------|----------------|--------|
| J             | 35      | 20-S     | 24-E  |         | 1980          | SOUTH            | 1980          | EAST           | EDDY   |

<sup>11</sup> Bottom Hole Location If Different From Surface

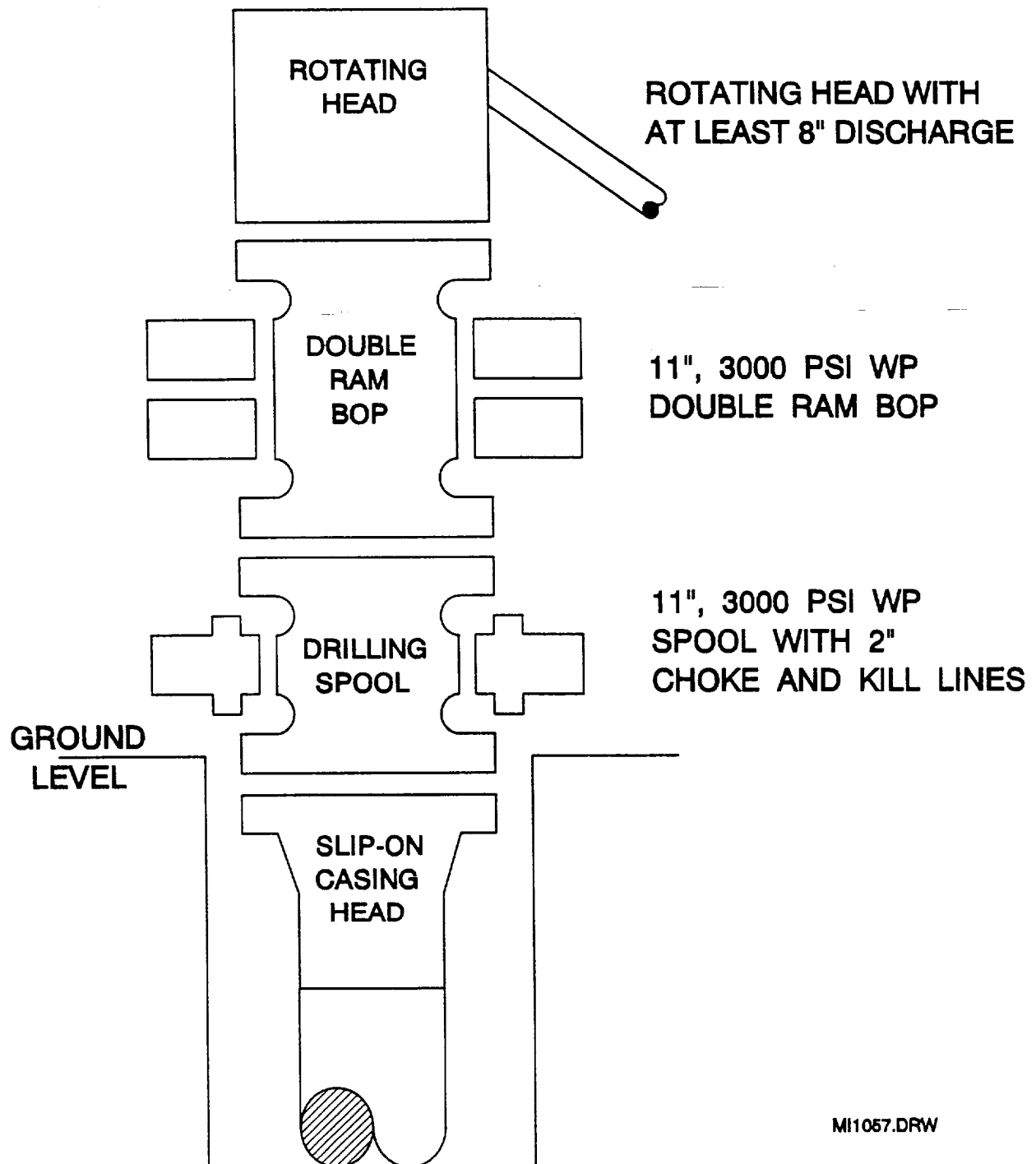
| UL or lot no. | Section | Township | Range | Lot Idn | Feet from the | North/South line | Feet from the | East/West line | County |
|---------------|---------|----------|-------|---------|---------------|------------------|---------------|----------------|--------|
|               |         |          |       |         |               |                  |               |                |        |

|                         |                  |                     |            |
|-------------------------|------------------|---------------------|------------|
| "Dedicated Acres<br>320 | "Joint or Infill | "Consolidation Code | "Order No. |
|-------------------------|------------------|---------------------|------------|

NO ALLOWABLE WILL BE ASSIGNED TO THIS COMPLETION UNTIL ALL INTERESTS HAVE BEEN CONSOLIDATED  
OR A NON-STANDARD UNIT HAS BEEN APPROVED BY THE DIVISION

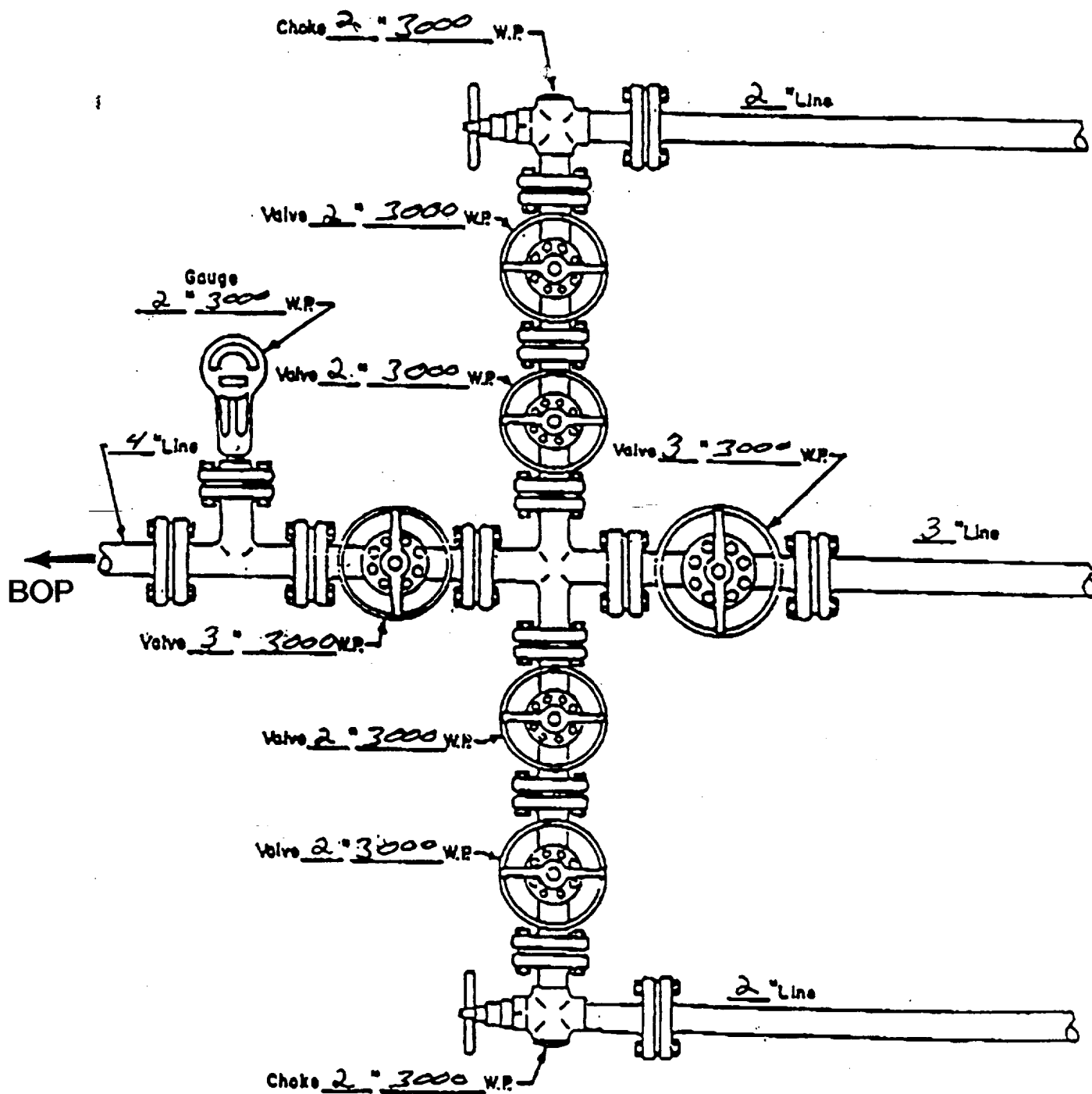
|    |  |  |  |  |  |
|----|--|--|--|--|--|
| 16 |  |  |  |  | 17 OPERATOR CERTIFICATION<br><i>I hereby certify that the information contained herein is true and complete to the best of my knowledge and belief.</i><br><br><br>Signature<br>JERRY W. HOOVER<br>Printed Name<br>SR. CONSERVATION COORDINATOR<br>Title<br>7/22/96<br>Date   |
|    |  |  |  |  |  |
|    |  |  |  |  |  |
|    |  |  |  |  |  |
|    |  |  |  |  | 18 SURVEYOR CERTIFICATION<br><i>I hereby certify that the well location shown on this plat was plotted from field notes of actual surveys made by me or under my supervision, and that the same is true and correct to best of my belief.</i><br><br>JUNE 27, 1996<br>Date of Survey<br>Signature and Seal of Professional Surveyor:<br><br>Certificate Number 8278 |
|    |  |  |  |  |  |
|    |  |  |  |  |  |
|    |  |  |  |  |  |

# BOP SPECIFICATIONS



MI1057.DRW

# CHOKE MANIFOLD DIAGRAM



MANIFOLD  
3000 #W.P.

- ☒ Manual
- ☐ Hydraulic